

30 dB WR-62 Waveguide Crossguide Coupler with UG Cover Flange and SMA Female Coupled Port from 11.9 GHz to 18 GHz in Brass

The FMWCP1086S-30 is a 30 dB WR-62 three port crossguide coupler with integrated SMA Female connector for the coupled port. This coupler can be mounted directly into the waveguide signal path, connected via coax to allow signal sampling /monitoring. The coupler has a typical VSWR of 1.1:1 and are made of Brass with UG Cover flanges. The FMWCP1086S-30 is part of a family of cross guide couplers offered by Fairview Microwave with coupling values ranging from 20 to 50 dB.

Electrical Specifications

Description	Min	Typ	Max	Units
Frequency Range	11.9		18	GHz
Coupler				
Nominal Coupling Level		30		dB
Coupling Accuracy			±1.5	dB
Directivity	17			dB
Insertion Loss		0.15		dB
Main Line VSWR			1.1:1	
Secondary Line VSWR			1.25:1	
Input Power (CW)			400	Watts
Input Power Peak			120	kWatts

Mechanical Specifications

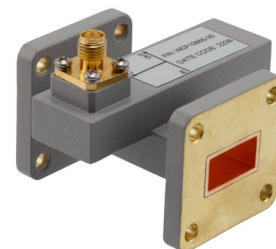
Size		
Length		2.362 in [59.99 mm]
Width		1.969 in [50.01 mm]
Height		1.79 in [45.47 mm]
Weight		0.287 lbs [130.18 g]
Interface		
Waveguide Size		WR-62
Flange Type		UG Cover
RF Connector Type		SMA Female
Coupler Body Material and Plating		Brass Copper, Passivated

Environmental Specifications

Compliance Certifications (see [product page](#) for current document)

Plotted and Other Data

Notes:



Features:

- Three Port Crossguide Waveguide Coupler
- 30±1.5 dB Nominal Coupling Level
- Integrated SMA Female Connector for the coupled port
- 11.9 GHz to 18 GHz Frequency Range
- Low VSWR < 1.25:1

Applications:

- Test Benches
- Radar
- Satellite
- Microwave Radio
- Attenuation Measurements
- Power Measurements
- Source Leveling

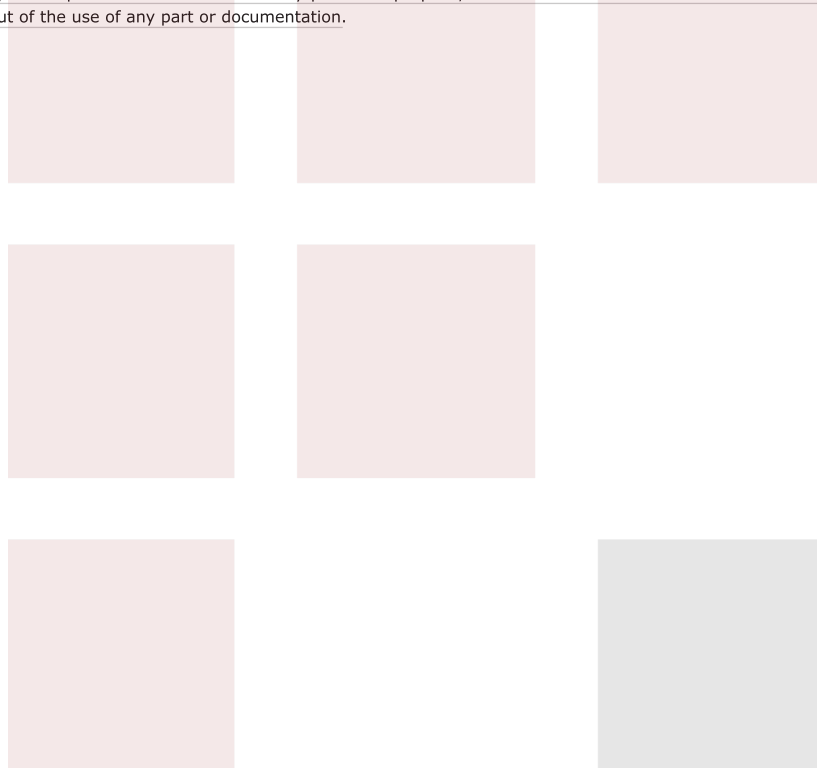
Fairview Microwave
301 Leora Ln., Suite 100
Lewisville, TX 75056
Tel: 1-800-715-4396 / (972) 649-6678
Fax: (972) 649-6689
www.fairviewmicrowave.com
sales@fairviewmicrowave.com

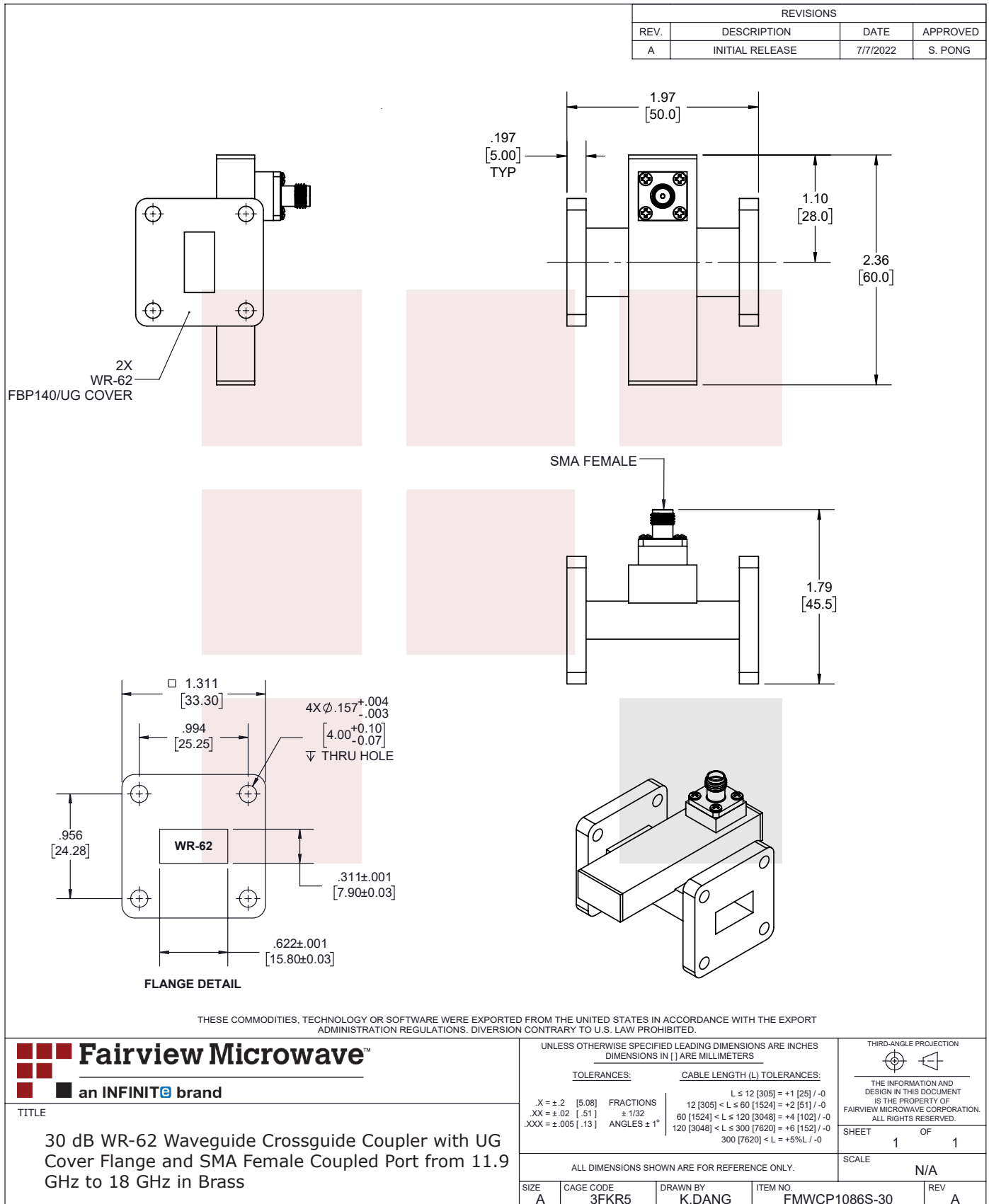
30 dB WR-62 Waveguide Crossguide Coupler with UG Cover Flange and SMA Female Coupled Port from 11.9 GHz to 18 GHz in Brass from Fairview Microwave is in-stock and available to ship same-day. All of our RF/microwave products are available off-the-shelf from our ISO 9001:2008 certified facilities in Lewisville, Texas. Fairview Microwave is RF on-demand.

For additional information on this product, please click the following link: [30 dB WR-62 Waveguide Crossguide Coupler with UG Cover Flange and SMA Female Coupled Port from 11.9 GHz to 18 GHz in Brass FMWCP1086S-30](https://www.fairviewmicrowave.com/30-db-wr-62-waveguide-crossguide-coupler-fmwcp1086S-30-p.aspx)

URL: <https://www.fairviewmicrowave.com/30-db-wr-62-waveguide-crossguide-coupler-fmwcp1086S-30-p.aspx>

The information contained in this document is accurate to the best of our knowledge and representative of the part described herein. It may be necessary to make modifications to the part and/or the documentation of the part, in order to implement improvements. Fairview Microwave reserves the right to make such changes as required. Unless otherwise stated, all specifications are nominal. Fairview Microwave does not make any representation or warranty regarding the suitability of the part described herein for any particular purpose, and Fairview Microwave does not assume any liability arising out of the use of any part or documentation.





T-Rev.D