

0 to 40 dB Continuously Variable Attenuator SMA Female To SMA Female From 850 MHz To 2.5 GHz Rated To 15 Watts in a Dial Design



SA4086

Description

Continuously variable attenuator SA4086 from Fairview Microwave is manufactured in a coaxial adjustable RF attenuator design. Our connectorized continuously variable attenuator has an input RF connector that is SMA. This SMA continuously variable attenuator has female gender for input / output ports and 50 Ohm impedance.

Fairview 50 Ohm SMA continuously adjustable attenuator is constructed to precise RF and microwave industry specifications and has a maximum attenuation value of 40 dB. Our SMA 40 dB variable attenuator is constructed to operate up to a maximum frequency of 2.5 GHz and a maximum input power of 15 Watts. This radio frequency continuously variable attenuator with SMA connectors is built with aluminum body material; you can find more continuous variable attenuator datasheet specifications above.

Fairview Microwave SMA coaxial continuously variable attenuator part number SA4086 is in-stock at our Allen, TX facility. Our adjustable RF attenuator that is continuously variable is only part of over one million components for RF, microwave and millimeter wave applications that are ready for same day shipment worldwide.

Configuration

Design	Continuously Variable, Bidirectional Attenuator
Body Material and Plating	Aluminum

Electrical Specifications Values at 25°C, sea level

Description	Minimum	Typical	Maximum	Units
Frequency Range	0.85		2.5	GHz
Impedance		50		Ohms
Attenuation Value		0 to 40		dB
Step Size		0		dB
Step Type		Dial		
Input Power (CW)			15	Watts
Insertion Loss			0.5	dB
VSWR			1.5:1	

Mechanical Specifications

Temperature

Size

Length	4.13 in [104.9 mm]
Width	3.38 in [85.85 mm]
Height	1 in [25.4 mm]
Weight	1.409 lbs [639.11 g]

Connectors

Description	Connector 1	Connector 2
Type	SMA Female	SMA Female
Contact Material and Plating	Beryllium Copper, Gold	Beryllium Copper, Gold

0 to 40 dB Continuously Variable Attenuator
SMA Female To SMA Female From 850 MHz To
2.5 GHz Rated To 15 Watts in a Dial Design



SA4086

Connectors

Description	Connector 1	Connector 2
Body Material and Plating	Stainless Steel	Stainless Steel

Compliance Certifications (see [product page](#) for current document)

Plotted and Other Data

Notes:

- Values at 25 °C, sea level

0 to 40 dB Continuously Variable Attenuator SMA Female To SMA Female From 850 MHz To 2.5 GHz Rated To 15 Watts in a Dial Design from Fairview Microwave is in-stock and available to ship same-day. All of our RF/microwave products are available off-the-shelf from our ISO 9001:2008 certified facilities in Lewisville, Texas. Fairview Microwave is RF on-demand.

For additional information on this product, please click the following link: [0 to 40 dB Continuously Variable Attenuator SMA Female To SMA Female From 850 MHz To 2.5 GHz Rated To 15 Watts in a Dial Design SA4086](#)

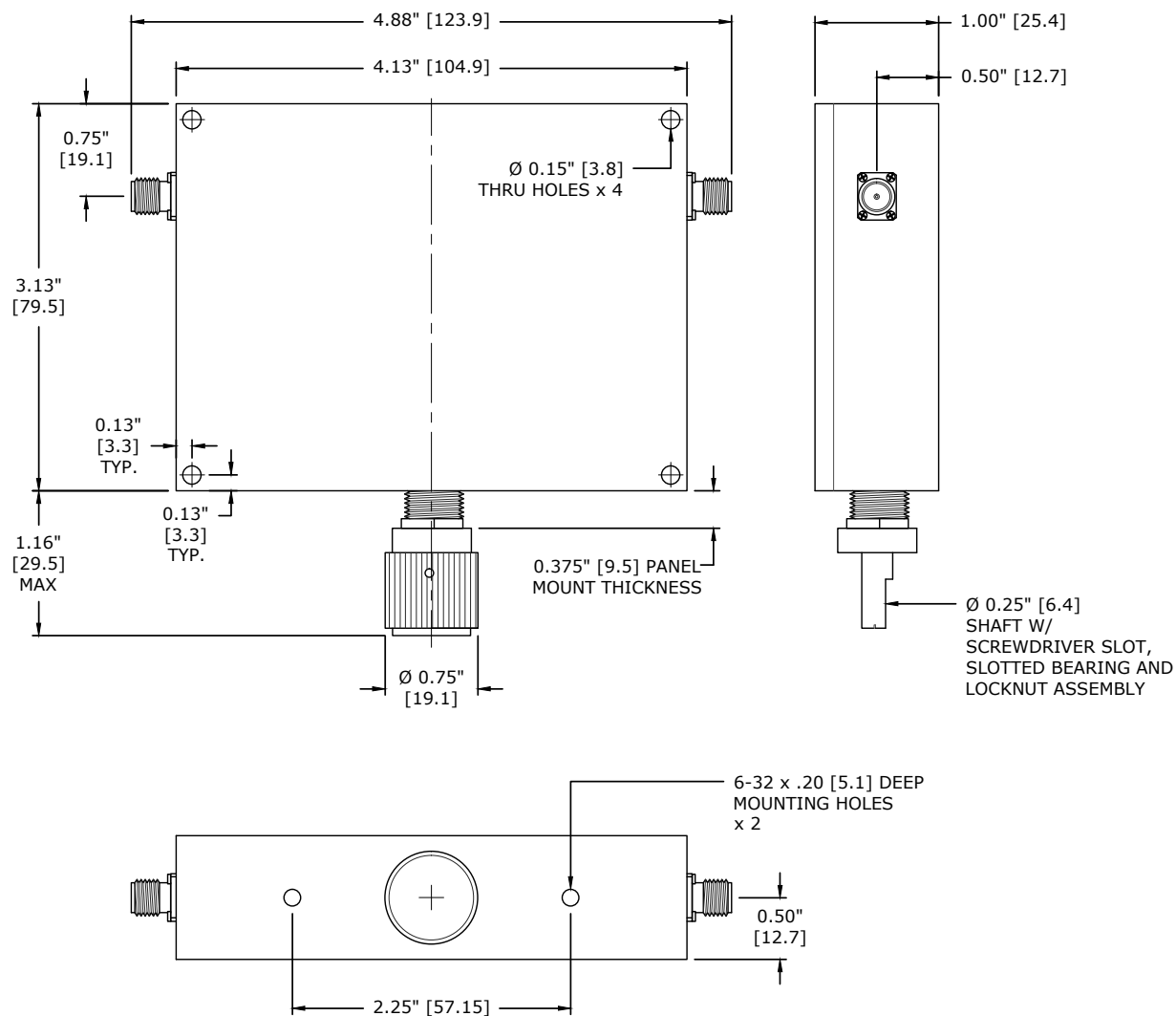
URL: <https://www.fairviewmicrowave.com/40db-continuous-attenuator-sma-female-sma-female-15-watts-sa4086-p.aspx>

The information contained within this document is accurate to the best of our knowledge and representative of the part described herein. It may be necessary to make modifications to the part and/or the documentation of the part in order to implement improvements. Fairview Microwave reserves the right to make such changes as required. Unless otherwise stated, all specifications are nominal. Fairview Microwave does not make any representation or warranty regarding the suitability of the part described herein for any particular purpose, and Fairview Microwave does not assume liability arising out of the use of any part or document.

SA4086 CAD Drawing

0 to 40 dB Continuously Variable Attenuator SMA Female To SMA Female

From 850 MHz To 2.5 GHz Rated To 15 Watts in a Dial Design



**UNITS USE MULT-TURN NON TRANSLATING SHAFTS,
FULL ATTENUATION IS REACHED IN LESS THAN 30 TURNS**

FAIRVIEW MICROWAVE INC.		NOTES: 1. UNLESS OTHERWISE SPECIFIED ALL DIMENSIONS ARE NOMINAL. 2. ALL SPECIFICATIONS ARE SUBJECT TO CHANGE WITHOUT NOTICE AT ANY TIME. 3. DIMENSIONS ARE IN INCHES [mm].			
ALLEN, TX 75013 WWW.FAIRVIEWMICROWAVE.COM					
TITLE	DWG NO		CAGE CODE		
	SA4086		3FKR5		
CAD FILE		020615	SHEET	SCALE	N/A
				SIZE	A
					5568