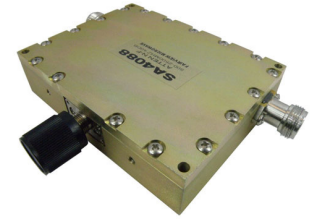


0.5 to 40 dB Continuously Variable Attenuator N
Female (Jack) To N Female (Jack) From 850 MHz
To 2.5 GHz Rated To 15 Watts, Dial, 1.5 VSWR



SA4088

Configuration

Design	Continuously Variable, Bidirectional Attenuator
Body Material and Plating	Aluminum

Electrical Specifications Values at 25°C, sea level

Description	Minimum	Typical	Maximum	Units
Frequency Range	0.85		2.5	GHz
Impedance		50		Ohms
Attenuation Value		0.5 to 40		dB
Step Size		0		dB
Step Type		Dial		
Input Power (CW)			15	Watts
Insertion Loss			0.5	dB
VSWR			1.5:1	

Mechanical Specifications

Temperature

Size

Length	4.13 in [104.9 mm]
Width	3.13 in [79.5 mm]
Height	1 in [25.4 mm]
Weight	1.413 lbs [640.93 g]

Connectors

Description	Connector 1	Connector 2
Type	N Female	N Female
Contact Material and Plating	Beryllium Copper, Gold	Beryllium Copper, Gold
Body Material and Plating	Stainless Steel	Stainless Steel

Compliance Certifications (see [product page](#) for current document)

Plotted and Other Data

Notes:

- Values at 25 °C, sea level

0.5 to 40 dB Continuously Variable Attenuator N
Female (Jack) To N Female (Jack) From 850 MHz
To 2.5 GHz Rated To 15 Watts, Dial, 1.5 VSWR



SA4088

0.5 to 40 dB Continuously Variable Attenuator N Female (Jack) To N Female (Jack) From 850 MHz To 2.5 GHz Rated To 15 Watts, Dial, 1.5 VSWR from Fairview Microwave is in-stock and available to ship same-day. All of our RF/microwave products are available off-the-shelf from our ISO 9001:2008 certified facilities in Lewisville, Texas. Fairview Microwave is RF on-demand.

For additional information on this product, please click the following link: [0.5 to 40 dB Continuously Variable Attenuator N Female \(Jack\) To N Female \(Jack\) From 850 MHz To 2.5 GHz Rated To 15 Watts, Dial, 1.5 VSWR SA4088](https://www.fairviewmicrowave.com/40db-continuously-variable-attenuator-n-female-n-female-15-watts-sa4088-p.aspx)

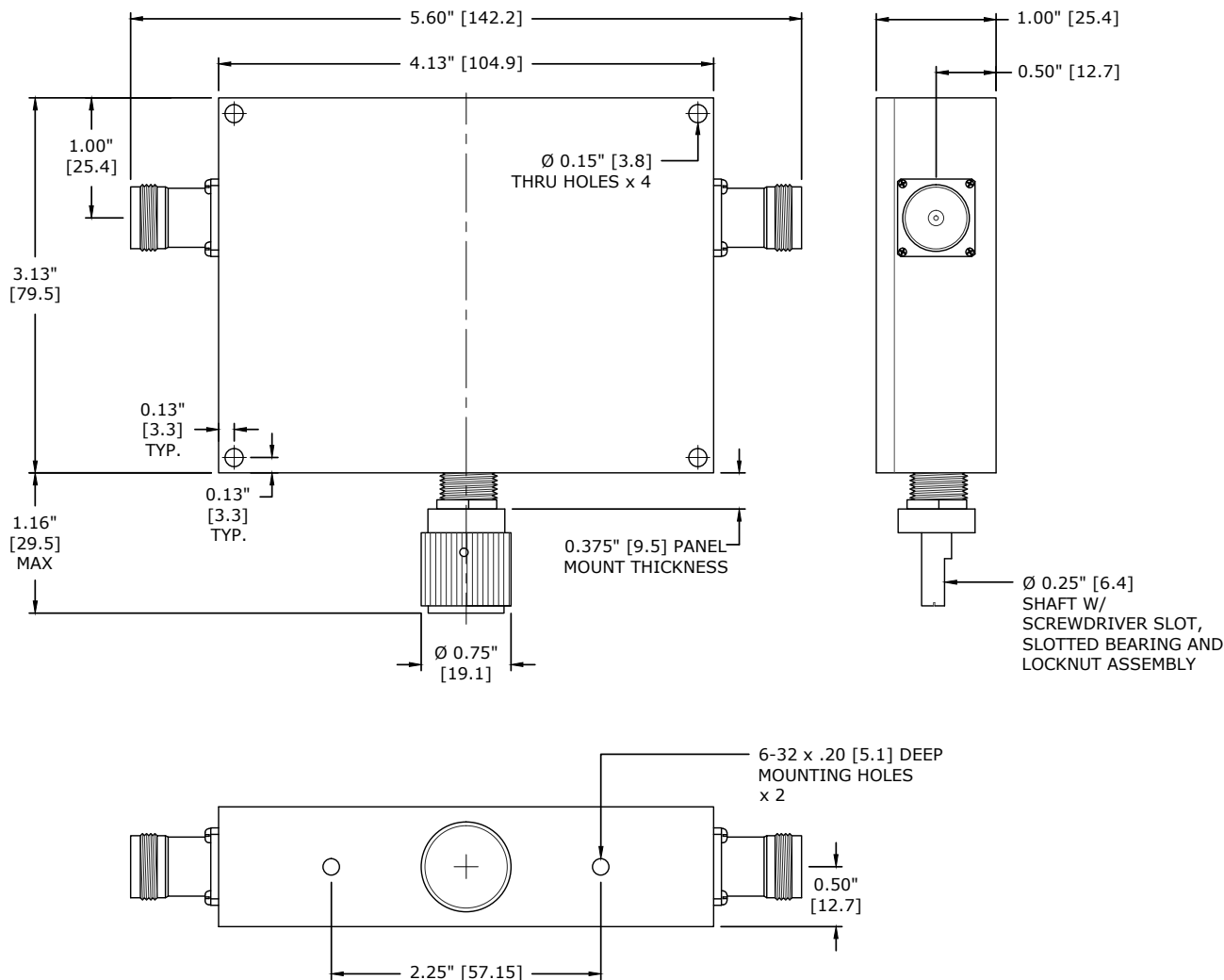
URL: <https://www.fairviewmicrowave.com/40db-continuously-variable-attenuator-n-female-n-female-15-watts-sa4088-p.aspx>

The information contained within this document is accurate to the best of our knowledge and representative of the part described herein. It may be necessary to make modifications to the part and/or the documentation of the part in order to implement improvements. Fairview Microwave reserves the right to make such changes as required. Unless otherwise stated, all specifications are nominal. Fairview Microwave does not make any representation or warranty regarding the suitability of the part described herein for any particular purpose, and Fairview Microwave does not assume liability arising out of the use of any part or document.

SA4088 CAD Drawing

0.5 to 40 dB Continuously Variable Attenuator N Female (Jack) To N Female (Jack)

From 850 MHz To 2.5 GHz Rated To 15 Watts, Dial, 1.5 VSWR



**UNITS USE MULT-TURN NON TRANSLATING SHAFTS,
FULL ATTENUATION IS REACHED IN LESS THAN 30 TURNS**

FAIRVIEW MICROWAVE INC.		NOTES: 1. UNLESS OTHERWISE SPECIFIED ALL DIMENSIONS ARE NOMINAL. 2. ALL SPECIFICATIONS ARE SUBJECT TO CHANGE WITHOUT NOTICE AT ANY TIME. 3. DIMENSIONS ARE IN INCHES [mm].			
ALLEN, TX 75013 WWW.FAIRVIEWMICROWAVE.COM		DWG NO		CAGE CODE	
TITLE		SA4088		3FKR5	
		CAD FILE	SHEET	SCALE	SIZE
		020615		N/A	A
					5568