

TR37A

- FOLLOW STEPS TO COMPLETE CATALOG SKU.
- IF ADDITIONAL REQUESTS ARE DESIRED, WRITE DISCRIPTION OF REQUEST IN THE PROVIDED TEXTBOX.

STEP 1: MATERIAL THICKNESS

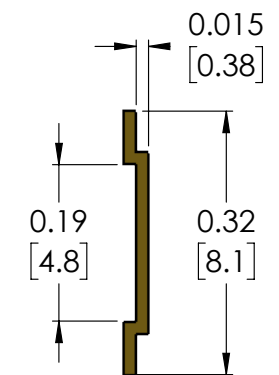
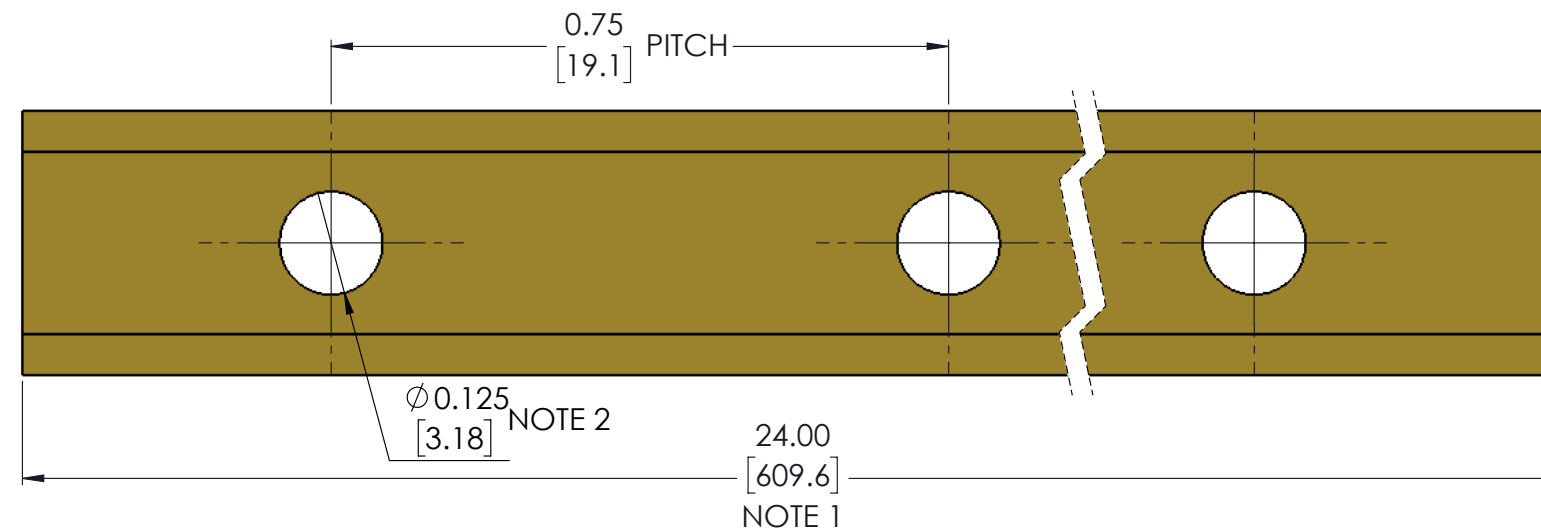
STEP 2: LENGTH

IN

STEP 3: FINISH

CUSTOMER PART #.

ADDITIONAL REQUESTS

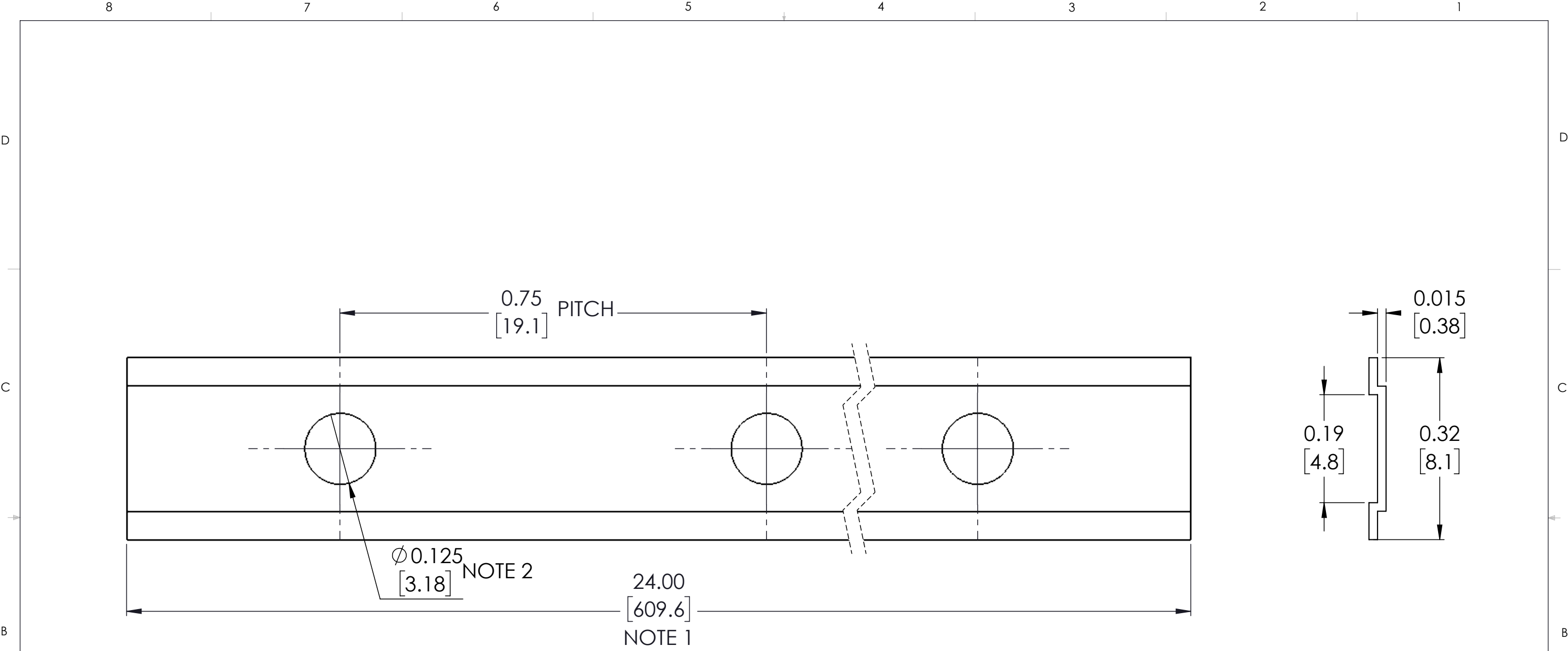


NOTES:

- TRACK MAY BE SUPPLIED CUT TO ANY LENGTH UP TO $\frac{24.00 \pm 0.08}{[609.6 \pm 2.0]}$
- HOLES CENTERED ON TRACK LEFT TO RIGHT
- UNLESS OTHERWISE SPECIFIED DIMENSIONS ARE IN $\frac{\text{in}}{[\text{mm}]}$
- THIS DRAWING IS FOR STANDARD TECH ETCH SHIELDING, OTHER CONFIGURATIONS AND OPTIONS ARE AVAILABLE. PLEASE CONTACT THE FACTORY FOR APPLICATION ASSISTANCE AND CUSTOM DESIGNS
- SUGGESTED SOURCE OF SUPPLY: TECH ETCH, INC., 45 ALDRIN ROAD, PLYMOUTH, MA 02360

CUT LENGTH TOLERANCES:		UNLESS OTHERWISE SPECIFIED:		<div>TECH ETCH</div> <div>Tech Etch, Inc. 45 Aldrin Road Plymouth, MA 02360</div>	
0" - < 6" = +/- .020 6" - < 10" = +/- .030 10" - < 12" = +/- .050 12" - < 18" = +/- .060 18" - < 25" = +/- .080 25" < = +/- 1.00		<i>DIMENSIONS ARE IN INCHES</i> TOLERANCES: ANGULAR: ± 3 ONE PLACE DECIMAL $\pm .03$ TWO PLACE DECIMAL $\pm .02$ THREE PLACE DECIMAL $\pm .005$			
DRAWN/DESIGNED BY		MATERIAL			
DATE:		FINISH		CATALOG SKU:	
J.M.G.		AS SPECIFIED		TR37A - -	
				MATL.	LENGTH FINISH
				SIZE	DESCRIPTION:
				B	SHIELDING TRACK
				CONTACT INFO: TEL 508-747-0300 FAX 508-746-9639 shielding@techetch.com www.techetch.com	

(PLAYING OF 3D AND MULTIMEDIA MUST BE ENABLED FOR INTERACTIVE MODEL TO DISPLAY)



- NOTES:
- (1) TRACK MAY BE SUPPLIED CUT TO ANY LENGTH UP TO $\frac{24.00 \pm 0.08}{[609.6 \pm 2.0]}$
 - (2) HOLES CENTERED ON TRACK LEFT TO RIGHT
 - (3) UNLESS OTHERWISE SPECIFIED DIMENSIONS ARE IN $\frac{\text{in}}{[\text{mm}]}$
 - (4) THIS DRAWING IS FOR STANDARD TECH ETCH SHIELDING, OTHER CONFIGURATIONS AND OPTIONS ARE AVAILABLE. PLEASE CONTACT THE FACTORY FOR APPLICATION ASSISTANCE AND CUSTOM DESIGNS
 - (5) SUGGESTED SOURCE OF SUPPLY: TECH ETCH, INC., 45 ALDRIN ROAD, PLYMOUTH, MA 02360

CUT LENGTH TOLERANCES:		UNLESS OTHERWISE SPECIFIED:		<div><div>TECH ETCH</div><div>Tech Etch, Inc. 45 Aldrin Road Plymouth, MA 02360</div></div>			
0" - < 6" = +/- .020 6" - < 10" = +/- .030 10" - < 12" = +/- .050 12" - < 18" = +/- .060 18" - < 25" = +/- .080 25" < = +/- 1.00		<div>DIMENSIONS ARE IN INCHES</div> <div>TOLERANCES:</div> <div>ANGULAR: ± 3</div> <div>ONE PLACE DECIMAL ± .03</div> <div>TWO PLACE DECIMAL ± .02</div> <div>THREE PLACE DECIMAL ± .005</div>					
		MATERIAL		PART NAME: TR37A			
		FINISH					
DRAWN/DESIGNED BY		DATE:		SIZE	DESCRIPTION:		
J.M.G.		4/2/23		B	SHIELDING TRACK		
		AS SPECIFIED		TEPN	ST237	SCALE: NONE	SHEET 1 OF 1