

6

5

4

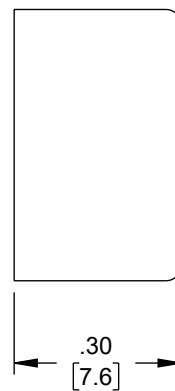
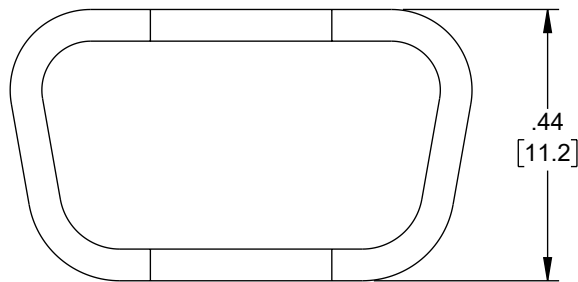
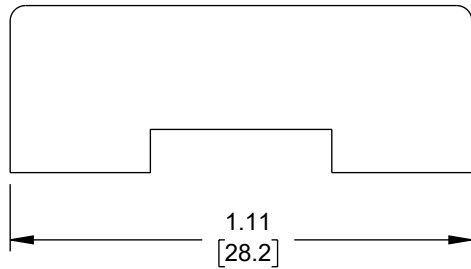
3

2

1

## REVISION

| ZONE | REV. | DESCRIPTION     | DATE       | CHANGED BY | APPROVED BY |
|------|------|-----------------|------------|------------|-------------|
|      | A    | INITIAL RELEASE | 09/08/2023 | BPUCHASKI  | GUTTADAURO  |



VIEWS NOT TO SCALE

## NOTES

1. MATERIAL: PVC, BLACK
2. PACKAGE TEN (10) PIECES PER BAG

REGULATORY COMPLIANCE:  
EU RoHS DIRECTIVE (MOST RECENT RELATED VERSION)

THE INFORMATION CONTAINED IN THIS DRAWING IS THE SOLE PROPERTY OF INFINITE ELECTRONICS, INC. ANY REPRODUCTION IN PART OR WHOLE WITHOUT THE WRITTEN PERMISSION OF INFINITE ELECTRONICS, INC. IS PROHIBITED. THESE COMMODITIES, TECHNOLOGY OR SOFTWARE WERE EXPORTED FROM THE UNITED STATES IN ACCORDANCE WITH THE EXPORT ADMINISTRATION REGULATIONS. DIVERSION CONTRARY TO U.S. LAW PROHIBITED.

UNLESS OTHERWISE SPECIFIED  
LEADING DIMENSIONS ARE INCHES  
DIMENSIONS IN [ ] ARE MILLIMETERS

## TOLERANCES:

|                     |                     |
|---------------------|---------------------|
| .X = ±.2 [5]        | FRACTIONS<br>± 1/32 |
| .XX = ±.02 [0.5]    | ± 1/32              |
| .XXX = ±.005 [0.13] | ANGLES ± 1°         |

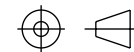
## CABLE LENGTH TOLERANCES:

|                          |                 |
|--------------------------|-----------------|
| ≤12 [305]                | = +1 [25] / -0  |
| >12 [305] ≤ 60 [1524]    | = +2 [51] / -0  |
| >60 [1524] ≤ 120 [3048]  | = +4 [102] / -0 |
| >120 [3048] ≤ 300 [7620] | = +6 [152] / -0 |
| >300 [7620]              | = +5% / -0      |

ALL DIMENSIONS ARE FOR REFERENCE ONLY  
AND SUBJECT TO CHANGE WITHOUT NOTICE.  
UN-DIMENSIONED/NON-CRITICAL FEATURES  
MAY VARY IN SIZE AND LOCATION  
COLORS MAY VARY

**PE PASTERNAK**  
an INFINIT® brand

Website: [www.Pasternack.com](http://www.Pasternack.com)  
Phone: 1.866.727.8376 | 1.949.261.1920



INTERPRET ALL DIMENSIONS AND  
TOLERANCES PER ASME Y14.5

SCALE

NONE

SHEET

1 OF 1

## DESCRIPTION

DB15/HD26 PROTECTIVE COVER FOR MALE  
CONNECTORS, PKG/10

| SIZE | CAGE CODE | DRAWN BY  | ITEM NO. | REV |
|------|-----------|-----------|----------|-----|
| A    | 53919     | BPUCHASKI | PE1024   | A   |

6

5

4

3

2

1