



Hermetically Sealed N Female to SMA Female Bulkhead
Mount Adapter, 11GHz VSWR1.35, MIL-STD 348B

RF Adapters Technical Data Sheet

PE1350

Configuration

- N Female Connector 1
- SMA Female Connector 2
- 50 Ohm
- Straight Body Geometry
- Bulkhead Mount Method

Features

- Max VSWR of 1.35:1 up to 11 GHz
- Hermetically Sealed
- Gold Plated Beryllium Copper Contact

Applications

- Allows Connection Between Series
- Vacuum Test Environment
- General Purpose Test
- Rack Mounted Equipment

Description

Pasternack's PE1350 hermetically sealed type N female to SMA female bulkhead adapter is part of our full line of RF components available for same-day shipping. Our type N to SMA adapter has a female to female gender configuration. PE1350 type N female to SMA female adapter operates to 11 GHz. The Pasternack RF adapter provides good VSWR of 1.35:1 maximum. This RF type N to SMA bulkhead adapter allows designers to create external connections on their product enclosures, and can be used in a variety of other rack mount and panel mount applications. This hermetic type N to SMA adapter prevents the leakage of gases, making it suitable for high pressure or vacuum applications or whenever an airtight seal is required.

RF adapters are often used to enable connections between two connector types that would otherwise not mate. Certain adapter configurations can also be used to protect connectors on expensive equipment where the number of connect/disconnect cycles is high. An RF, microwave or millimeter wave adapter is connected to the equipment, and the commonly changed connection is made with the adapter which can be easily replaced when it wears out after high usage; such adapters are referred to as connector savers. Pasternack also offers bulkhead, panel mount, hermetically sealed, reverse polarity, and isolated ground adapter varieties to serve all of your RF, microwave and millimeter wave needs.

Electrical Specifications

Description	Minimum	Typical	Maximum	Units
Frequency Range	DC		11	GHz
VSWR			1.35:1	
Insertion Loss			0.16	dB
Operating Voltage (AC)			500	Vrms
Dielectric Withstanding Voltage (AC)			1,500	Vrms
Insulation Resistance	5,000			MOhms

Mechanical Specifications

Size	
Length	1.25 in [31.75 mm]

Click the following link (or enter part number in "SEARCH" on website) to obtain additional part information including price, inventory and certifications: [Hermetically Sealed N Female to SMA Female Bulkhead Mount Adapter, 11GHz VSWR1.35, MIL-STD 348B PE1350](#)



Hermetically Sealed N Female to SMA Female Bulkhead Mount Adapter, 11GHz VSWR1.35, MIL-STD 348B

RF Adapters Technical Data Sheet

PE1350

Width	0.87 in [22.10 mm]
Height	0.87 in [22.10 mm]
Weight	0.09 lbs [38.56 g]

Description	Connector 1	Connector 2
Type	N Female	SMA Female
Polarity	Standard	Standard
Connector Option	Hermetically Sealed	Hermetically Sealed
Mating Cycles, Min	500	100
Mating Torque	6 to 10 in-lbs [0.68 to 1.13 Nm]	4 in-lbs 0.45 Nm min
Contact Captivation Axial Force, Min	6.3 lbs [2.86 kg]	6.1 lbs [2.77 kg]
Coupling Proof Torque	15 in-lbs [1.7 Nm]	5.3 in-lbs [0.6 Nm]

Material Specifications

Description	Connector 1		Connector 2	
	Material	Plating	Material	Plating
Type	N Female		SMA Female	
Contact	Beryllium Copper	Gold	Beryllium Copper	Gold
Insulation	PEI		PEI	
Outer Conductor	Brass	Tri-Metal	Brass	Tri-Metal
Body	Brass	Tri-Metal	Brass	Tri-Metal

Environmental Specifications

Temperature

Operating Range	-65 to +165 °C
-----------------	----------------

Humidity

Thermal Shock

Salt Spray

Hermetic Seal

MIL-STD-202, Method 206

MIL-STD-202, Method 107, Condition B

MIL-STD-202, Method 101, Condition B

1*10⁻⁸ cc/sec of HELIUM at 1 ATM

Compliance Certifications (see [product page](#) for current document)

Plotted and Other Data

Notes:

Click the following link (or enter part number in "SEARCH" on website) to obtain additional part information including price, inventory and certifications: [Hermetically Sealed N Female to SMA Female Bulkhead Mount Adapter, 11GHz VSWR1.35, MIL-STD 348B PE1350](#)



Hermetically Sealed N Female to SMA Female Bulkhead
Mount Adapter, 11GHz VSWR1.35, MIL-STD 348B

RF Adapters Technical Data Sheet

PE1350

Hermetically Sealed N Female to SMA Female Bulkhead Mount Adapter, 11GHz VSWR1.35, MIL-STD 348B from Pasternack Enterprises has same day shipment for domestic and International orders. Our RF, microwave and millimeter wave products maintain a 99.4% availability and are part of the broadest selection in the industry.

Click the following link (or enter part number in "SEARCH" on website) to obtain additional part information including price, inventory and certifications: [Hermetically Sealed N Female to SMA Female Bulkhead Mount Adapter, 11GHz VSWR1.35, MIL-STD 348B PE1350](https://www.pasternack.com/hermetically-sealed-n-female-to-sma-female-bulkhead-mount-adapter-11ghz-vswr1.35-mil-std-348b-pe1350-p.aspx)

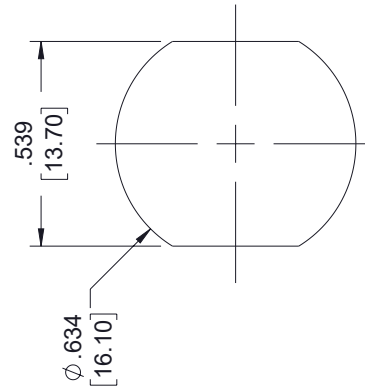
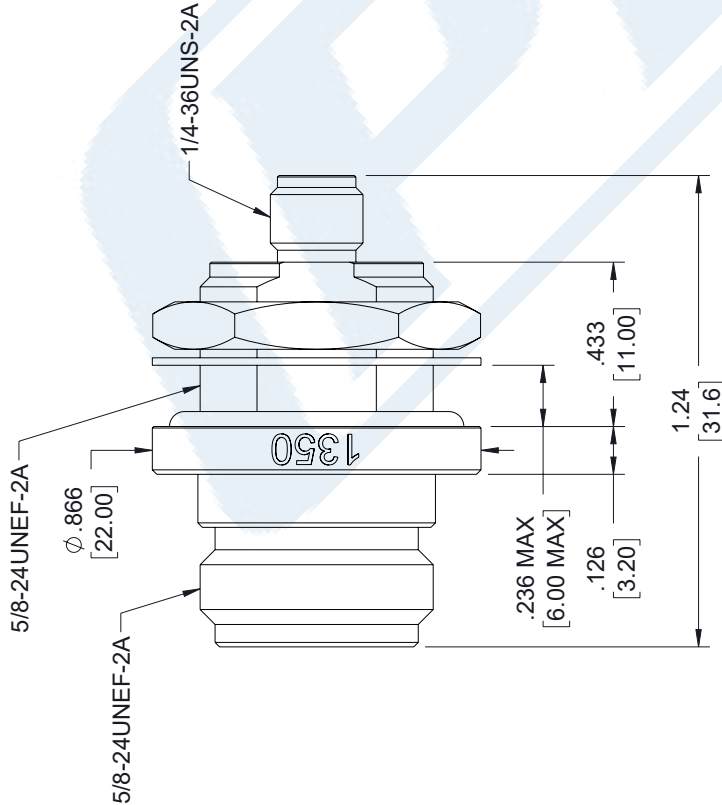
URL: <https://www.pasternack.com/hermetically-sealed-n-female-to-sma-female-bulkhead-mount-adapter-11ghz-vswr1.35-mil-std-348b-pe1350-p.aspx>

The information contained in this document is accurate to the best of our knowledge and representative of the part described herein. It may be necessary to make modifications to the part and/or the documentation of the part, in order to implement improvements. Pasternack reserves the right to make such changes as required. Unless otherwise stated, all specifications are nominal. Pasternack does not make any representation or warranty regarding the suitability of the part described herein for any particular purpose, and Pasternack does not assume any liability arising out of the use of any part or documentation.

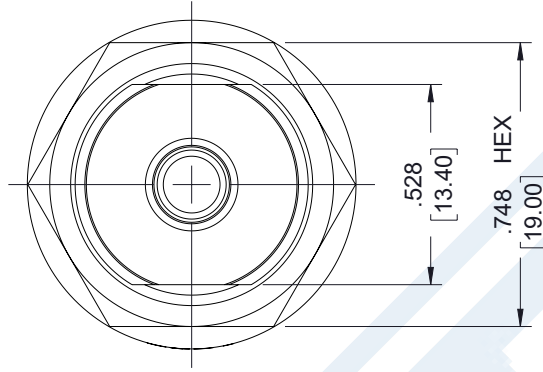
PE1350 CAD Drawing

Hermetically Sealed N Female to SMA Female Bulkhead
Mount Adapter, 11GHz VSWR1.35, MIL-STD 348B

REVISIONS			
REV.	DESCRIPTION	DATE	APPROVED
A	INITIAL RELEASE	12/12/2022	AGANWANI



MOUNTING HOLE



UNLESS OTHERWISE SPECIFIED
LEADING DIMENSIONS ARE INCHES
DIMENSIONS IN [] ARE MILLIMETERS

TOLERANCES:

X = ± .2 [5.08] FRACTIONS
XX = ± .02 [.51] ± 1/32
XXX = ± .005 [.13] ANGLES ± 1°

CABLE LENGTH (L) TOLERANCES:

L ≤ 12 [305] = +1 [25] / -0
12 [305] < L ≤ 60 [1524] = +2 [51] / -0
60 [1524] < L ≤ 120 [3048] = +4 [102] / -0
120 [3048] < L ≤ 300 [7620] = +6 [152] / -0
300 [7620] < L = +5% L / -0

ALL DIMENSIONS SHOWN
ARE FOR REFERENCE ONLY.

PASTERNAK
an INFINITI® brand

Pasternack Enterprises, Inc.
P O Box 16759, Irvine, CA 92623
Phone: 1.949.261.1920 | 1.866.727.8376
Fax: 1.949.261.7451
Website: www.pasternack.com
E-mail: sales@pasternack.com

THIRD-ANGLE PROJECTION

THE INFORMATION AND
DESIGN IN THIS DOCUMENT
IS THE PROPERTY OF
PASTERNAK CORPORATION
ALL RIGHTS RESERVED.

SHEET 1 OF 1

SCALE N/A

SIZE A

CAGE CODE 53919

DRAWN BY HBAKKE

ITEM NO. PE1350

REV A