



4 way N Power Divider from 10 MHz to 500 MHz Rated at 10 Watts

Power Dividers Technical Data Sheet

PE20DV1210

Features

- 4-Way Power Divider
- N Female Connectorized Design
- 10 to 500 MHz Frequency Range
- Max Power 10 Watts (CW)
- Insertion Loss < 1.3 dB
- Isolation > 20 dB

Applications

- Test and Measurement
- Military Communications
- Commercial Communications
- Wireless Communications
- SATCOM

Description

Pasternack carries a wide selection of power dividers to fit your needs. These components are essential in many systems, allowing the combination of multiple signals or splitting of a single signal into multiple signals with equal magnitude and phase. Pasternack's resistive and Wilkinson power dividers come with excellent performance featuring minimal loss, high isolation and low VSWR. They are available in both narrow and broad bandwidths with a variety of connector types such as 2.92mm, BNC, N and SMA.

The PE20DV1210 is a 4-way power divider that operates from 10 to 500 MHz and can handle up to 10 Watts (CW) with 1.3 dB max insertion loss and 20 dB min isolation. The package interface uses N female connectors.

Electrical Specifications

Number of Output Ports 4

Description	Minimum	Typical	Maximum	Units
Frequency Range	10		500	MHz
Impedance		50		Ohms
Input VSWR		1.3:1	1.4:1	
Output VSWR		1.3:1	1.4:1	
Insertion Loss		1.2	1.3	dB
Isolation	20	22		dB
Amplitude Balance		0.2	0.3	dB
Phase Balance		1	2	Degrees
Nominal Power Splitting		6		dB
Input Power (CW)			10	Watts
Reverse Power (CW)			1	Watt
Input Power (Peak) 10% Duty Cycle, 1us PW			100	Watts

Click the following link (or enter part number in "SEARCH" on website) to obtain additional part information including price, inventory and certifications: [4 way N Power Divider from 10 MHz to 500 MHz Rated at 10 Watts PE20DV1210](#)



4 way N Power Divider from 10 MHz to
500 MHz Rated at 10 Watts

Power Dividers Technical Data Sheet

PE20DV1210

Mechanical Specifications

Size

Length	4.056 in [103.02 mm]
Width	1.755 in [44.58 mm]
Height	0.78 in [19.81 mm]
Weight	0.38 lbs [172.37 g]

Housing Material and Plating

Aluminum

Configuration

Input Connector	N Female
Output Connectors	N Female

Environmental Specifications

Temperature

Operating Range	-40 to +85 deg C
Storage Range	-50 to +105 deg C

Humidity	100% RH at 35°C, 95%RH at 40°C
Shock	20G for 11msec half sine wave, 3 axis both directions
Vibration	25g RMS (15 degrees 2KHz) endurance, 1 hour per axis
Altitude	30,000 ft.

Compliance Certifications (see [product page](#) for current document)

Plotted and Other Data

Notes:

4 way N Power Divider from 10 MHz to 500 MHz Rated at 10 Watts from Pasternack Enterprises has same day shipment for domestic and International orders. Our RF, microwave and millimeter wave products maintain a 99.4% availability and are part of the broadest selection in the industry.

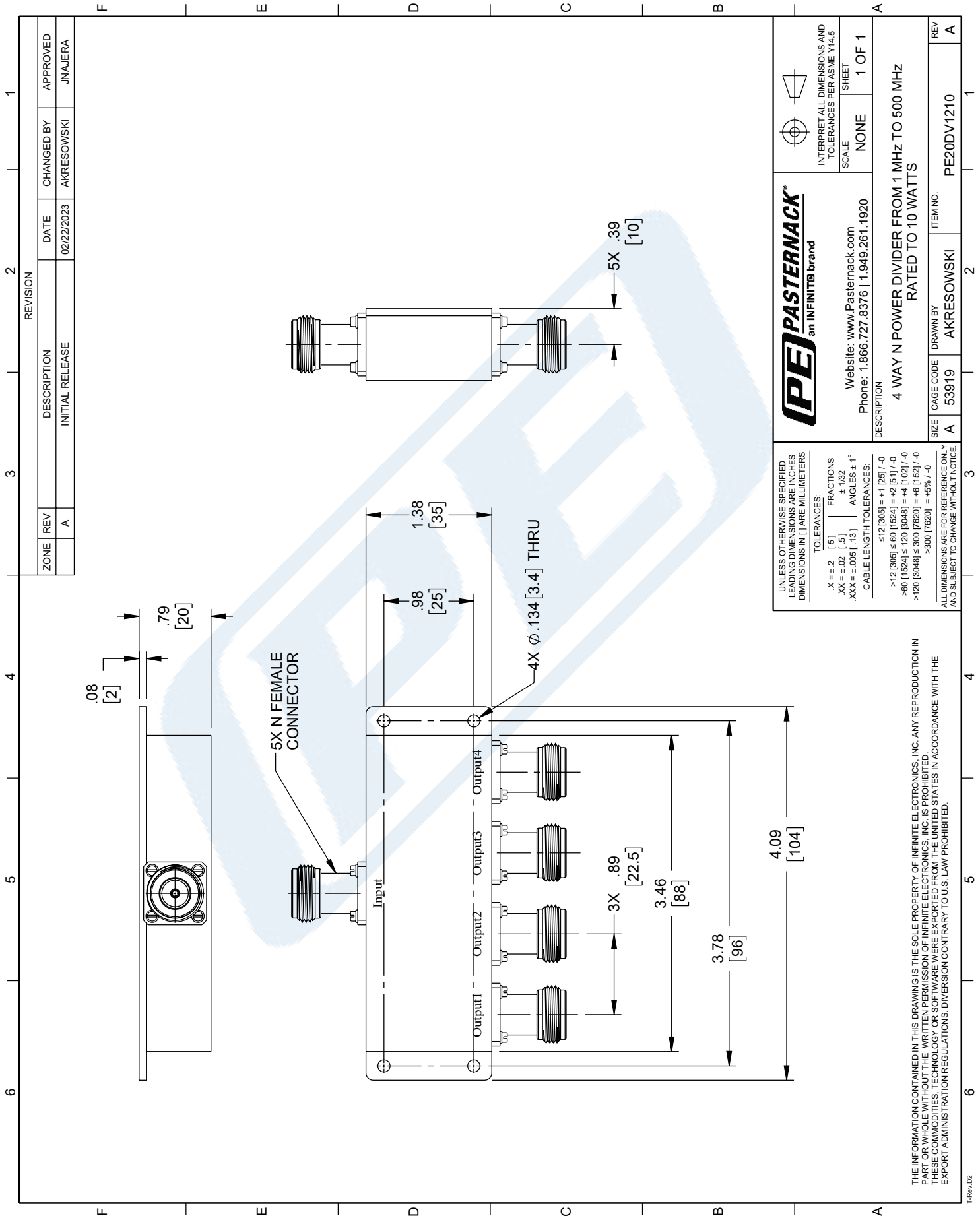
Click the following link (or enter part number in "SEARCH" on website) to obtain additional part information including price, inventory and certifications: [4 way N Power Divider from 10 MHz to 500 MHz Rated at 10 Watts PE20DV1210](#)

URL: <https://www.pasternack.com/0-way-power-divider-500-khz-pe20dv1210-p.aspx>

The information contained in this document is accurate to the best of our knowledge and representative of the part described herein. It may be necessary to make modifications to the part and/or the documentation of the part, in order to implement improvements. Pasternack reserves the right to make such changes as required. Unless otherwise stated, all specifications are nominal. Pasternack does not make any representation or warranty regarding the suitability of the part described herein for any particular purpose, and Pasternack does not assume any liability arising out of the use of any part or documentation.

PE20DV1210 CAD Drawing

4 way N Power Divider from 1 MHz to 500 MHz Rated at 10 Watts



REVISION		DATE	CHANGED BY	APPROVED
ZONE	REV	DESCRIPTION		
	A	INITIAL RELEASE	AKRESOWSKI	JNAJERA

PE PASTERNAK
an INFINITIB brand

Website: www.Pasternack.com
Phone: 1.866.727.8376 | 1.949.261.1920

INTERPRET ALL DIMENSIONS AND TOLERANCES PER ASME Y14.5
SCALE NONE SHEET 1 OF 1

DESCRIPTION
4 WAY N POWER DIVIDER FROM 1 MHz TO 500 MHz
RATED TO 10 WATTS

SIZE A CAGE CODE A 53919 DRAWN BY AKRESOWSKI ITEM NO. PE20DV1210 REV A

UNLESS OTHERWISE SPECIFIED LEADING DIMENSIONS ARE INCHES DIMENSIONS IN [] ARE MILLIMETERS

TOLERANCES:
 .X = ± .2 [.5] FRACTIONS
 .XX = ± .02 [.5] ± .02
 .XXX = ± .005 [.13] ANGLES ± 1°
 CABLE LENGTH TOLERANCES:
 ≤ 12 [305] = +1 [25] / -0
 ≤ 60 [1524] = +2 [51] / -0
 ≤ 120 [3048] = +4 [102] / -0
 ≤ 300 [7620] = +8 [152] / -0
 > 300 [7620] = +5% / -0

ALL DIMENSIONS ARE FOR REFERENCE ONLY AND SUBJECT TO CHANGE WITHOUT NOTICE

THE INFORMATION CONTAINED IN THIS DRAWING IS THE SOLE PROPERTY OF INFINITE ELECTRONICS, INC. ANY REPRODUCTION IN PART OR WHOLE WITHOUT THE WRITTEN PERMISSION OF INFINITE ELECTRONICS, INC. IS PROHIBITED. THESE COMMODITIES, TECHNOLOGY OR SOFTWARE WERE EXPORTED FROM THE UNITED STATES IN ACCORDANCE WITH THE EXPORT ADMINISTRATION REGULATIONS. DIVERSION CONTRARY TO U.S. LAW PROHIBITED.