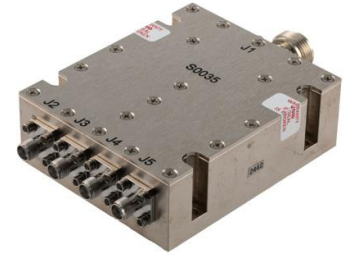


## 4 Way Broadband Combiner from 2 GHz to 8 GHz SMA Female Input and N-Type Female Output rated 300 Watts



### PE20S0035

#### Features

- 2 to 8 GHz Frequency
- 300 watt max power
- Insertion Loss: < 0.8 dB
- Phase Balance:  $\pm 6$  degrees
- Amplitude Balance:  $\pm 0.3$  dB
- Isolation: >7.5 dB
- High Power Handling Capability

#### Applications

- Communications Systems
- Power Combining
- LTE, Cellular
- Amplifier Systems
- Amplifier Power Combining
- Wireless Infrastructures
- Defense Applications

#### Description

PE20S0035 is a passive 4 way High Power Broadband RF Combiner with 50 ohm SMA and N-Type connectors operating from 2 to 8 GHz, with max power at 300 watts. The PE20S0035 has greater than 7.5 dB typical isolation, has less than 0.8 dB typical low insertion loss and a Max VSWR of 1.35:1; along with a phase balance of  $\pm 6$  degrees and an amplitude balance of  $\pm 0.32$  dB. The RF Combiner operates in a temperature range from -55°C to 85°C.

#### Electrical Specifications

Design  
Number of Input Ports

Reactive  
4

Description	Minimum	Typical	Maximum	Units
Frequency Range	2		8	GHz
Impedance		50		Ohms
Input VSWR			1.35:1	
Output VSWR			1.35:1	
Insertion Loss			0.8	dB
Isolation	7.5			dB
Amplitude Balance		$\pm 0.3$		dB
Phase Balance		$\pm 6$		Degrees
Power Handling (CW)			300	Watts

#### Mechanical Specifications

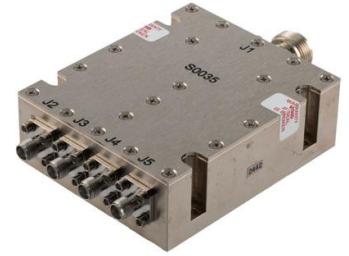
**Size**

Length 3.08 in [78.23 mm]  
Width 2.6 in [66.04 mm]  
Height 1.03 in [26.16 mm]  
Weight 0.69 lbs [312.98 g]

**Configuration**

Package Type Connectorized  
Input Connector SMA Female  
Output Connectors N Female

## 4 Way Broadband Combiner from 2 GHz to 8 GHz SMA Female Input and N-Type Female Output rated 300 Watts



### PE20S0035

#### Environmental Specifications

##### Temperature

Operating Range

-55 to +85 deg C

**Compliance Certifications** (see [product page](#) for current document)

#### Plotted and Other Data

Notes:

#### Typical Performance Data

4 Way Broadband Combiner from 2 GHz to 8 GHz SMA Female Input and N-Type Female Output rated 300 Watts from Pasternack Enterprises has same day shipment for domestic and International orders. Our RF, microwave and millimeter wave products maintain a 99.4% availability and are part of the broadest selection in the industry.

Click the following link (or enter part number in "SEARCH" on website) to obtain additional part information including price, inventory and certifications: [4 Way Broadband Combiner from 2 GHz to 8 GHz SMA Female Input and N-Type Female Output rated 300 Watts PE20S0035](#)

URL: <https://www.pasternack.com/4-way-sma-broadband-power-combiner-2-ghz-8-ghz-300-watts-pe20s0035-p.aspx>

The information contained within this document is accurate to the best of our knowledge and representative of the part described herein. It may be necessary to make modifications to the part and/or the documentation of the part in order to implement improvements. Pasternack Enterprises reserves the right to make such changes as required. Unless otherwise stated, all specifications are nominal. Pasternack Enterprises does not make any representation or warranty regarding the suitability of the part described herein for any particular purpose, and Pasternack Enterprises does not assume liability arising out of the use of any part or document.

PE20S0035 CAD Drawing

4 Way Broadband Combiner from 2 GHz to 8 GHz SMA Female Input and N-Type Female Output rated 300 Watts

