

SMB Plug Right Angle to BNC Male Cable Using RG174 Coax



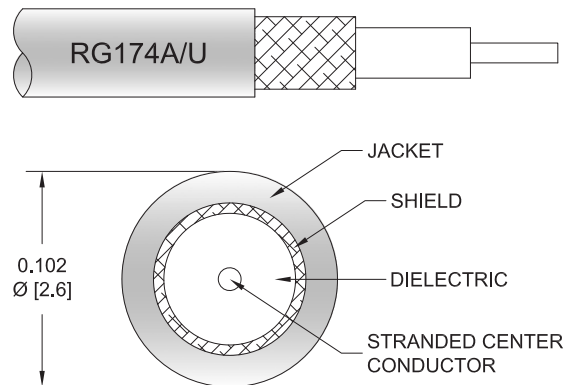
PE3C3406

Configuration

- Connector 1: SMB Plug Right Angle
- Connector 2: BNC Male
- Cable Type: RG174
- Coax Flex Type: Flexible

Features

- Max Frequency 1 GHz
- 66% Phase Velocity
- PVC Jacket



Applications

- General Purpose
- Laboratory Use

Description

Pasternack's PE3C3406 SMB plug right angle to BNC male cable using RG174 coax is part of our full line of RF components available for same-day shipping. Pasternack's flexible RF cable assemblies are ideal for applications where tight bends and flexure are required. This Pasternack SMB to BNC cable assembly has a plug to male gender configuration with 50 ohm flexible RG174 coax. The PE3C3406 SMB plug to BNC male cable assembly operates to 1 GHz. The right angle SMB interface on the RG174 cable allows for easier connections in tight spaces.

Custom versions of most RF cable assemblies can be built and shipped same day. Custom cable assembly lengths can be obtained by specifying the desired length on the web site at time of order or by contacting a sales representative. Other available RF cable assembly value added services include connector orientation or clocking, heat shrink booting and custom labeling. RF testing can also be performed to document the electrical performance of your cable assembly.

Electrical Specifications

| Description | Minimum | Typical | Maximum | Units |
|-------------------------|---------|----------------|---------|--------------|
| Frequency Range | DC | | 1,000 | MHz |
| VSWR | | | 1.4:1 | |
| Velocity of Propagation | | 66 | | % |
| Capacitance | | 31.08 [101.97] | | pF/ft [pF/m] |

Specifications by Frequency

SMB Plug Right Angle to BNC Male Cable Using RG174 Coax



PE3C3406

| Part Number | Length | Description | F1 | F2 | F3 | F4 | Units | Weight (lbs) |
|-------------|--------------------------|-----------------------|------|------|------|------|-------|--------------|
| | | Frequency | 100 | 250 | 500 | 1000 | MHz | |
| PE3C3406 | Custom Lengths Available | Insertion Loss (Typ.) | 0.08 | 0.14 | 0.21 | 0.32 | dB/ft | |
| | | | 0.28 | 0.45 | 0.7 | 1.05 | dB/m | |
| PE3C3406-12 | 12 inch | Insertion Loss (Typ.) | 0.39 | 0.44 | 0.52 | 0.62 | dB | 0.049 |
| PE3C3406-24 | 24 inch | Insertion Loss (Typ.) | 0.47 | 0.58 | 0.73 | 0.94 | dB | 0.058 |
| PE3C3406-36 | 36 inch | Insertion Loss (Typ.) | 0.56 | 0.72 | 0.94 | 1.26 | dB | 0.067 |
| PE3C3406-48 | 48 inch | Insertion Loss (Typ.) | 0.64 | 0.85 | 1.15 | 1.58 | dB | 0.076 |
| PE3C3406-72 | 72 inch | Insertion Loss (Typ.) | 0.81 | 1.13 | 1.57 | 2.22 | dB | 0.094 |

The insertion loss data for the base model does not include loss due to the connectors. Each length includes insertion loss due to the connectors.

| | |
|-----------------------------|----------------|
| Loss due to Connector 1: | 0.2 dB |
| Loss due to Connector 2: | 0.1 dB |
| Base Weight: | 0.049 pounds |
| Additional Weight per Inch: | 0.00075 pounds |

Mechanical Specifications

Cable Assembly

| | |
|--------|---------------------|
| Weight | 0.049 lbs [22.23 g] |
|--------|---------------------|

Cable

| | |
|--------------------------------------|---------------------|
| Cable Type | RG174 |
| Impedance | 50 Ohms |
| Inner Conductor Type | Stranded |
| Inner Conductor Material and Plating | Copper Clad Steel |
| Dielectric Type | PE |
| Number of Shields | 1 |
| Shield Layer 1 | Tinned Copper Braid |
| Jacket Material | PVC, Black |
| Jacket Diameter | 0.11 in [2.79 mm] |

SMB Plug Right Angle to BNC Male Cable Using RG174 Coax



PE3C3406

Connectors

| Description | Connector 1 | Connector 2 |
|---------------------------------------|------------------------|-----------------|
| Type | SMB Plug Right Angle | BNC Male |
| Specification | MIL-STD-348A | MIL-STD-348A |
| Impedance | 50 Ohms | 50 Ohms |
| Configuration | Right Angle | Straight |
| Contact Material and Plating | Beryllium Copper, Gold | Brass, Gold |
| Contact Plating Specification | 30 µin minimum | 50 µin minimum |
| Dielectric Type | PTFE | PTFE |
| Outer Conductor Material and Plating | Brass, Nickel | |
| Outer Conductor Plating Specification | 100 µin minimum | |
| Body Material and Plating | Brass, Nickel | Brass, Nickel |
| Body Plating Specification | 100 µin minimum | 100 µin minimum |
| Coupling Nut Material and Plating | | Brass, Nickel |
| Coupling Nut Plating Specification | | 100 µin minimum |
| Seal Gasket Material | | Silicone Rubber |

Environmental Specifications

Operating Range Temperature -40 to +80 deg C

Compliance Certifications (see [product page](#) for current document)

Plotted and Other Data

Notes:

SMB Plug Right Angle to BNC Male Cable Using RG174 Coax



PE3C3406

Typical Performance Data

How to Order

Part Number Configuration:

PE3C3406

- xx

uu

Unit of Measure:
cm = Centimeters
<blank> = Inches

Length

Base Number

Example: PE3C3406-12 = 12 inches long cable
PE3C3406-100cm = 100 cm long cable

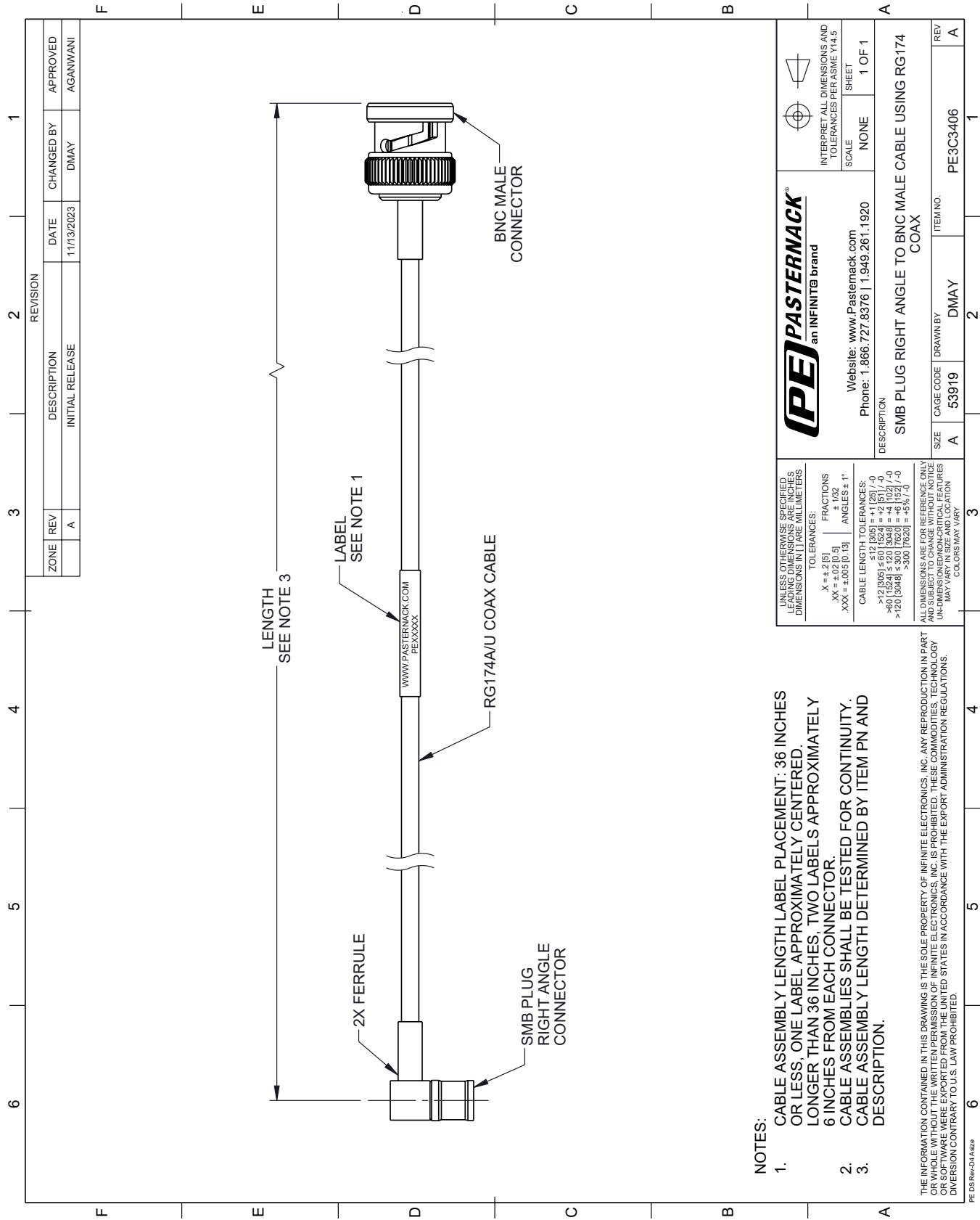
SMB Plug Right Angle to BNC Male Cable Using RG174 Coax from Pasternack Enterprises has same day shipment for domestic and International orders. Our RF, microwave and millimeter wave products maintain a 99.4% availability and are part of the broadest selection in the industry.

Click the following link (or enter part number in "SEARCH" on website) to obtain additional part information including price, inventory and certifications: [SMB Plug Right Angle to BNC Male Cable Using RG174 Coax PE3C3406](#)

URL: <https://www.pasternack.com/smb-plug-right-angle-to-bnc-male-cable-using-rg174-pe3c3406-p.aspx>

The information contained within this document is accurate to the best of our knowledge and representative of the part described herein. It may be necessary to make modifications to the part and/or the documentation of the part in order to implement improvements. Pasternack Enterprises reserves the right to make such changes as required. Unless otherwise stated, all specifications are nominal. Pasternack Enterprises does not make any representation or warranty regarding the suitability of the part described herein for any particular purpose, and Pasternack Enterprises does not assume liability arising out of the use of any part or document.

PE3C3406 CAD Drawing
SMB Plug Right Angle to BNC Male Cable Using RG174 Coax



- 1. CABLE ASSEMBLY LENGTH LABEL PLACEMENT: 36 INCHES OR LESS, ONE LABEL APPROXIMATELY CENTERED. LONGER THAN 36 INCHES, TWO LABELS APPROXIMATELY 6 INCHES FROM EACH CONNECTOR.
- 2. CABLE ASSEMBLIES SHALL BE TESTED FOR CONTINUITY.
- 3. CABLE ASSEMBLY LENGTH DETERMINED BY ITEM PN AND DESCRIPTION.

| | | | | | |
|-----------------------------------------------------------------------------------------------------------------------------------------------------------------------------|-----------|---------------------------------------------------------------------|----------|-----------------------------------------------------------|--|
| UNLESS OTHERWISE SPECIFIED LEADING DIMENSIONS ARE IN INCHES DIMENSIONS IN [] ARE MILLIMETERS | | PE PASTERNAK® an INFINITI® brand | | INTERPRET ALL DIMENSIONS AND TOLERANCES PER ASME Y14.5 | |
| TOLERANCES: | | Website: www.Pasternack.com | | SCALE | |
| .X = ±.2 [5] | | Phone: 1.866.727.8376 1.949.261.1920 | | NONE | |
| .XX = ±.02 [0.5] | | | | SHEET | |
| .XXX = ±.005 [0.13] | | | | 1 OF 1 | |
| FRACTIONS | | | | | |
| ± 1/32 | | | | | |
| ANGLES ± 1° | | | | | |
| CABLE LENGTH TOLERANCES: | | | | | |
| ≤ 12 [305] = ±.1 [25] / -0 | | | | | |
| > 12 [305] ≤ 60 [1524] = ±.2 [51] / -0 | | | | | |
| > 60 [1524] ≤ 120 [3048] = ±.3 [76] / -0 | | | | | |
| > 120 [3048] ≤ 300 [7620] = ±.5 [127] / -0 | | | | | |
| > 300 [7620] = ±.75 [19] / -0 | | | | | |
| ALL DIMENSIONS ARE FOR REFERENCE ONLY AND SUBJECT TO CHANGE WITHOUT NOTICE UNLESS OTHERWISE SPECIFIED, DIMENSIONS MAY VARY IN SIZE AND LOCATION COLORS MAY VARY | | | | | |
| DESCRIPTION | | SMB PLUG RIGHT ANGLE TO BNC MALE CABLE USING RG174 COAX | | | |
| SIZE | CAGE CODE | DRAWN BY | ITEM NO. | REV | |
| A | 53919 | DMAY | PE3C3406 | A | |