



## N Male to N Male Cable Using PE-SR402AL Coax

### TECHNICAL DATA SHEET

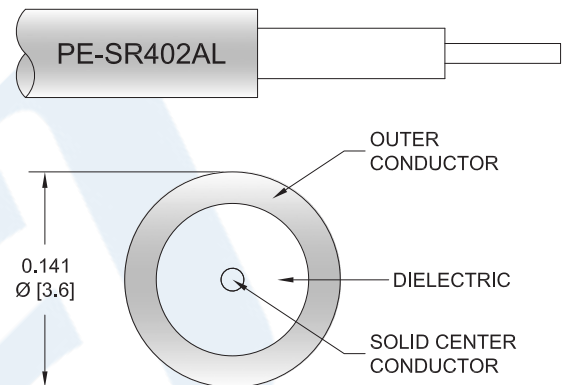
**PE3W01391**

#### Configuration

- Connector 1: N Male
- Connector 2: N Male
- Cable Type: PE-SR402AL
- Coax Flex Type: Semi-Rigid

#### Features

- Max Frequency 4 GHz



#### Applications

- General Purpose
- Laboratory Use

#### Description

Pasternack's PE3W01391 type N male to type N male cable using PE-SR402AL coax is part of our full line of RF components available for same-day shipping. Pasternack's semi-rigid RF cable assemblies are ideal for high performance applications and can be formed, using proper tooling, to the routing pattern required. This Pasternack type N to type N cable assembly has a male to male gender configuration with 50 ohm semi-rigid PE-SR402AL coax. The PE3W01391 type N male to type N male cable assembly operates to 4 GHz.

Custom versions of most RF cable assemblies can be built and shipped same day. Custom cable assembly lengths can be obtained by specifying the desired length on the web site at time of order or by contacting a sales representative. Other available RF cable assembly value added services include connector orientation or clocking, heat shrink booting and custom labeling. RF testing can also be performed to document the electrical performance of your cable assembly.

Click the following link (or enter part number in "SEARCH" on website) to obtain additional part information including price, inventory and certifications: [N Male to N Male Cable Using PE-SR402AL Coax PE3W01391](#)



## N Male to N Male Cable Using PE-SR402AL Coax

### TECHNICAL DATA SHEET

**PE3W01391**

#### Electrical Specifications

Description	Minimum	Typical	Maximum	Units
Frequency Range	DC		4	GHz
VSWR			1.4:1	

#### Specifications by Frequency

Part Number	Length	Description	F1	F2	F3	F4	F5	Units	Weight (lbs)
		Frequency	1000	2500	4000	0	0	MHz	
PE3W01391	Custom Lengths Available	Insertion Loss (Typ.)	0.13	0.18	0.24	0	0	dB/ft	
			0.43	0.6	0.79	0	0	dB/m	
PE3W01391-6	6 inch	Insertion Loss (Typ.)	0.27	0.29	0.32	0	0	dB	0.174
PE3W01391-12	12 inch	Insertion Loss (Typ.)	0.33	0.38	0.44	0	0	dB	0.182
PE3W01391-24	24 inch	Insertion Loss (Typ.)	0.46	0.56	0.68	0	0	dB	0.2
PE3W01391-36	36 inch	Insertion Loss (Typ.)	0.59	0.74	0.92	0	0	dB	0.217
PE3W01391-48	48 inch	Insertion Loss (Typ.)	0.72	0.92	1.16	0	0	dB	0.234

The insertion loss data for the base model does not include loss due to the connectors. Each length includes insertion loss due to the connectors.

Loss due to Connector 1: 0.1 dB

Loss due to Connector 2: 0.1 dB

Base Weight: 0.182 pounds

Additional Weight per Inch: 0.00144 pounds

#### Electrical Specification Notes:

Insertion Loss does not include the loss of the connectors. Insertion Loss is estimated as 0.1 dB per connector.

#### Mechanical Specifications

##### Cable Assembly

Weight 0.182 lbs [82.55 g]

##### Cable

Cable Type PE-SR402AL  
 Impedance 50 Ohms  
 Inner Conductor Type Solid  
 Inner Conductor Material and Plating Copper Clad Steel, Silver  
 Dielectric Type PTFE  
 Number of Shields 1  
 Shield Layer 1 Tinned Aluminum  
 Jacket Diameter 0.141 in [3.58 mm]

One Time Minimum Bend Radius 0.1 in [2.54 mm]

Click the following link (or enter part number in "SEARCH" on website) to obtain additional part information including price, inventory and certifications: [N Male to N Male Cable Using PE-SR402AL Coax PE3W01391](#)



## N Male to N Male Cable Using PE-SR402AL Coax

### TECHNICAL DATA SHEET

**PE3W01391**

#### Connectors

Description	Connector 1	Connector 2
Type	N Male Threaded	N Male Threaded
Impedance	50 Ohms	50 Ohms
Contact Material and Plating	Brass, Gold	Brass, Gold
Contact Plating Specification	30μ in. minimum	30μ in. minimum
Dielectric Type	Teflon	Teflon
Body Material and Plating	Brass, Nickel	Brass, Nickel
Body Plating Specification	100μ in. minimum	100μ in. minimum
Coupling Nut Material and Plating	Brass, Nickel	Brass, Nickel
Coupling Nut Plating Specification	100μ in. minimum	100μ in. minimum

**Compliance Certifications** (see [product page](#) for current document)

#### Plotted and Other Data

Notes:

Click the following link (or enter part number in "SEARCH" on website) to obtain additional part information including price, inventory and certifications: [N Male to N Male Cable Using PE-SR402AL Coax PE3W01391](#)



## N Male to N Male Cable Using PE-SR402AL Coax

### TECHNICAL DATA SHEET

**PE3W01391**

#### How to Order

Part Number Configuration:

**PE3W01391**

- **xx**

**uu**

Unit of Measure:  
cm = Centimeters  
<blank> = Inches  
Length  
Base Number

Example: PE3W01391-12 = 12 inches long cable  
PE3W01391-100cm = 100 cm long cable

N Male to N Male Cable Using PE-SR402AL Coax from Pasternack Enterprises has same day shipment for domestic and International orders. Our RF, microwave and millimeter wave products maintain a 99.4% availability and are part of the broadest selection in the industry.

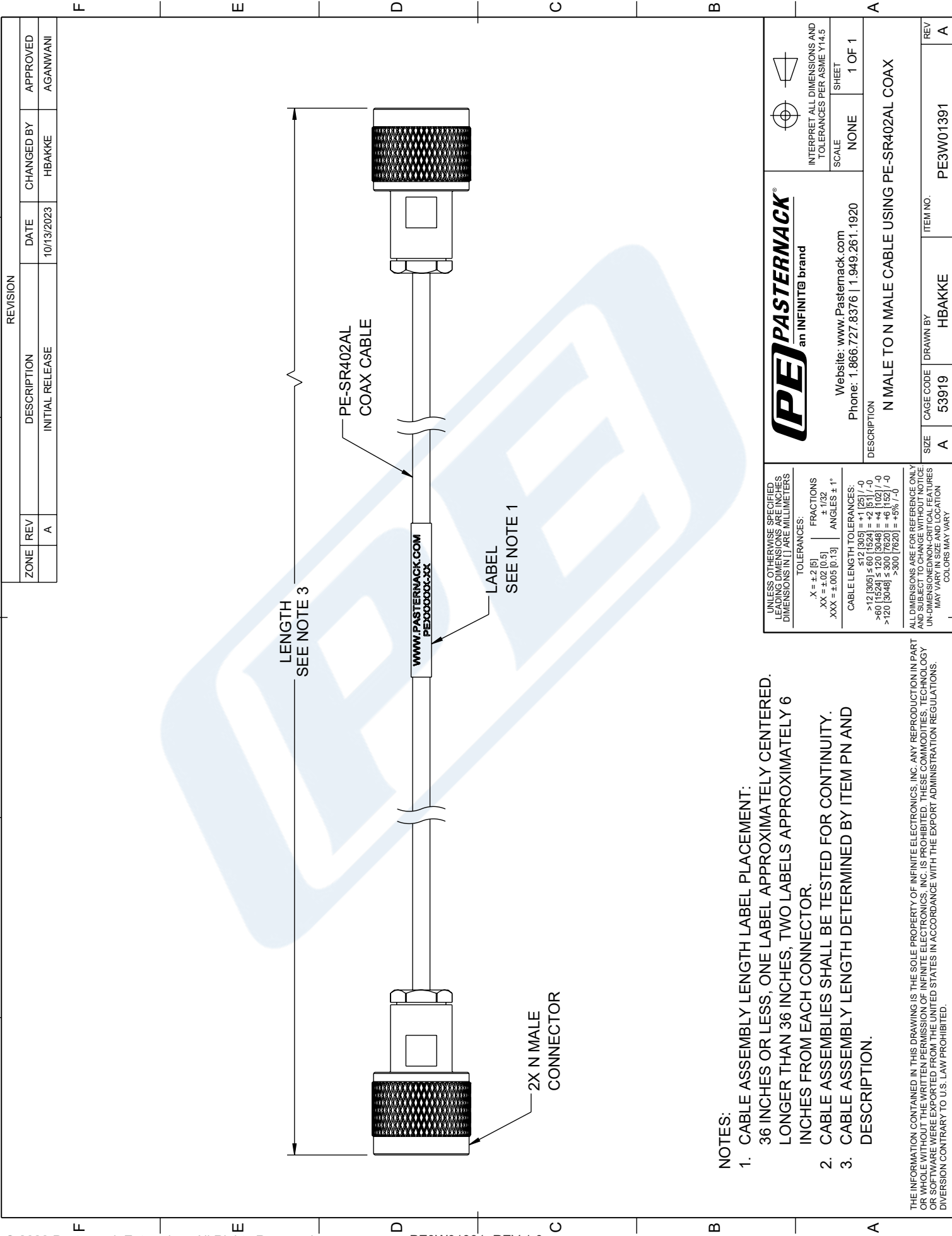
Click the following link (or enter part number in "SEARCH" on website) to obtain additional part information including price, inventory and certifications: [N Male to N Male Cable Using PE-SR402AL Coax PE3W01391](#)

URL: <https://www.pasternack.com/n-male-n-male-pe-sr402al-cable-assembly-pe3w01391-p.aspx>

The information contained in this document is accurate to the best of our knowledge and representative of the part described herein. It may be necessary to make modifications to the part and/or the documentation of the part, in order to implement improvements. Pasternack reserves the right to make such changes as required. Unless otherwise stated, all specifications are nominal. Pasternack does not make any representation or warranty regarding the suitability of the part described herein for any particular purpose, and Pasternack does not assume any liability arising out of the use of any part or documentation.

PE3W01391 CAD Drawing


N Male to N Male Cable Using PE-SR402AL Coax



- NOTES:
1. CABLE ASSEMBLY LENGTH LABEL PLACEMENT:  
36 INCHES OR LESS, ONE LABEL APPROXIMATELY CENTERED.  
LONGER THAN 36 INCHES, TWO LABELS APPROXIMATELY 6 INCHES FROM EACH CONNECTOR.
  2. CABLE ASSEMBLIES SHALL BE TESTED FOR CONTINUITY.
  3. CABLE ASSEMBLY LENGTH DETERMINED BY ITEM PN AND DESCRIPTION.
- THE INFORMATION CONTAINED IN THIS DRAWING IS THE SOLE PROPERTY OF INFINITE ELECTRONICS, INC. ANY REPRODUCTION IN PART OR WHOLE WITHOUT THE WRITTEN PERMISSION OF INFINITE ELECTRONICS, INC. IS PROHIBITED. THESE COMMODITIES, TECHNOLOGY OR SOFTWARE WERE EXPORTED FROM THE UNITED STATES IN ACCORDANCE WITH THE EXPORT ADMINISTRATION REGULATIONS. DIVERSION CONTRARY TO U.S. LAW PROHIBITED.

REVISION			
ZONE	REV	DESCRIPTION	DATE
	A	INITIAL RELEASE	10/13/2023

CHANGED BY	APPROVED
HBAKKE	AGANWANI

 an INFINITI® brand		INTERPRET ALL DIMENSIONS AND TOLERANCES PER ASME Y14.5	
Website: www.Pasternack.com Phone: 1.866.727.8376   1.949.261.1920		SCALE	SHEET
DESCRIPTION N MALE TO N MALE CABLE USING PE-SR402AL COAX		NONE	1 OF 1
SIZE A	CAGE CODE 53919	DRAWN BY HBAKKE	ITEM NO. PE3W01391
		REV A	

UNLESS OTHERWISE SPECIFIED, LEADING DIMENSIONS ARE IN INCHES. DIMENSIONS IN [ ] ARE MILLIMETERS.	
TOLERANCES:	FRACTIONS
X = ±.2 [5]	± 1/32
XX = ±.02 [0.5]	± 1/64
XXX = ±.005 [0.13]	ANGLES ± 1°
CABLE LENGTH TOLERANCES:	
>12 [305] ≤ 30 [762]	± 1/32 / -0
>30 [762] ≤ 60 [1524]	± 1/16 / -0
>60 [1524] ≤ 120 [3048]	± 1/8 / -0
>120 [3048] ≤ 300 [7620]	± 1/4 / -0
>300 [7620]	± 1/2 / -0
ALL DIMENSIONS ARE FOR REFERENCE ONLY. UNLESS OTHERWISE SPECIFIED, DIMENSIONS ARE IN INCHES. DIMENSIONS IN [ ] ARE MILLIMETERS. UNLESS OTHERWISE SPECIFIED, DIMENSIONS ARE IN INCHES. DIMENSIONS IN [ ] ARE MILLIMETERS. UNLESS OTHERWISE SPECIFIED, DIMENSIONS ARE IN INCHES. DIMENSIONS IN [ ] ARE MILLIMETERS.	