



BNC Male to SMA Female Cable Using RG174 Coax

RF Cable Assemblies Technical Data Sheet

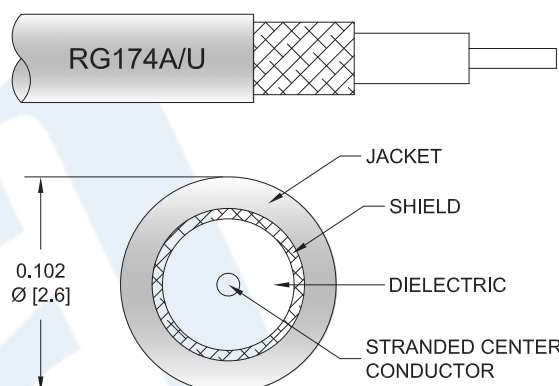
PE3W08099

Configuration

- Connector 1: BNC Male
- Connector 2: SMA Female
- Cable Type: RG174

Features

- Max Frequency 1 GHz
- 66% Phase Velocity
- PVC Jacket



Applications

- General Purpose
- Laboratory Use

Description

Pasternack's PE3W08099 BNC male to SMA female cable using RG174 coax is part of our full line of RF components available for same-day shipping. Pasternack's flexible RF cable assemblies are ideal for applications where tight bends and flexure are required. This Pasternack BNC to SMA cable assembly has a male to female gender configuration with 50 ohm flexible RG174 coax. The PE3W08099 BNC male to SMA female cable assembly operates to 1 GHz.

Custom versions of most RF cable assemblies can be built and shipped same day. Custom cable assembly lengths can be obtained by specifying the desired length on the web site at time of order or by contacting a sales representative. Other available RF cable assembly value added services include connector orientation or clocking, heat shrink booting and custom labeling. RF testing can also be performed to document the electrical performance of your cable assembly.

Click the following link (or enter part number in "SEARCH" on website) to obtain additional part information including price, inventory and certifications: [BNC Male to SMA Female Cable Using RG174 Coax PE3W08099](#)



BNC Male to SMA Female Cable Using RG174 Coax

RF Cable Assemblies Technical Data Sheet

PE3W08099

Electrical Specifications

Description	Minimum	Typical	Maximum	Units
Frequency Range	DC		1,000	MHz
VSWR			1.4:1	
Velocity of Propagation		66		%
Capacitance		31.08 [101.97]		pF/ft [pF/m]

Specifications by Frequency

Description	F1	F2	F3	F4	F5	Units
Frequency	100	250	500	1,000		MHz
Insertion Loss (Typ.)	0.084	0.137	0.211	0.32		dB/ft
	0.28	0.45	0.69	1.05		dB/m

Electrical Specification Notes:

Insertion Loss does not include the loss of the connectors. Insertion Loss is estimated as 0.1 dB per connector.

Mechanical Specifications

Cable Assembly

Weight 0.045 lbs [20.41 g]

Cable

Cable Type RG174
 Impedance 50 Ohms
 Inner Conductor Type Stranded
 Inner Conductor Material and Plating Copper Clad Steel
 Dielectric Type PE
 Number of Shields 1
 Shield Layer 1 Tinned Copper Braid
 Jacket Material PVC, Black
 Jacket Diameter 0.11 in [2.79 mm]

Click the following link (or enter part number in "SEARCH" on website) to obtain additional part information including price, inventory and certifications: [BNC Male to SMA Female Cable Using RG174 Coax PE3W08099](#)



BNC Male to SMA Female Cable Using RG174 Coax

RF Cable Assemblies Technical Data Sheet

PE3W08099

Connectors

Description	Connector 1	Connector 2
Type	BNC Male	SMA Female
Specification	MIL-STD-348A	MIL-STD-348A
Impedance	50 Ohms	50 Ohms
Contact Material and Plating	Brass, Gold	Beryllium Copper, Gold
Contact Plating Specification	50 μ in minimum	50 μ in. minimum
Dielectric Type	PTFE	Teflon
Outer Conductor Material and Plating		Brass, Gold
Outer Conductor Plating Specification		3 μ in. minimum
Body Material and Plating	Brass, Nickel	Brass, Gold
Body Plating Specification	100 μ in minimum	3 μ in. minimum
Coupling Nut Material and Plating	Brass, Nickel	
Coupling Nut Plating Specification	100 μ in minimum	

Environmental Specifications

Temperature

Operating Range

-40 to +80 deg C

Compliance Certifications (see [product page](#) for current document)

Plotted and Other Data

Notes:

Click the following link (or enter part number in "SEARCH" on website) to obtain additional part information including price, inventory and certifications: [BNC Male to SMA Female Cable Using RG174 Coax PE3W08099](#)



BNC Male to SMA Female Cable Using RG174 Coax

RF Cable Assemblies Technical Data Sheet

PE3W08099

How to Order

Part Number Configuration:

PE3W08099

- **xx**

uu

Unit of Measure:
cm = Centimeters
<blank> = Inches
Length
Base Number

Example: PE3W08099-12 = 12 inches long cable
PE3W08099-100cm = 100 cm long cable

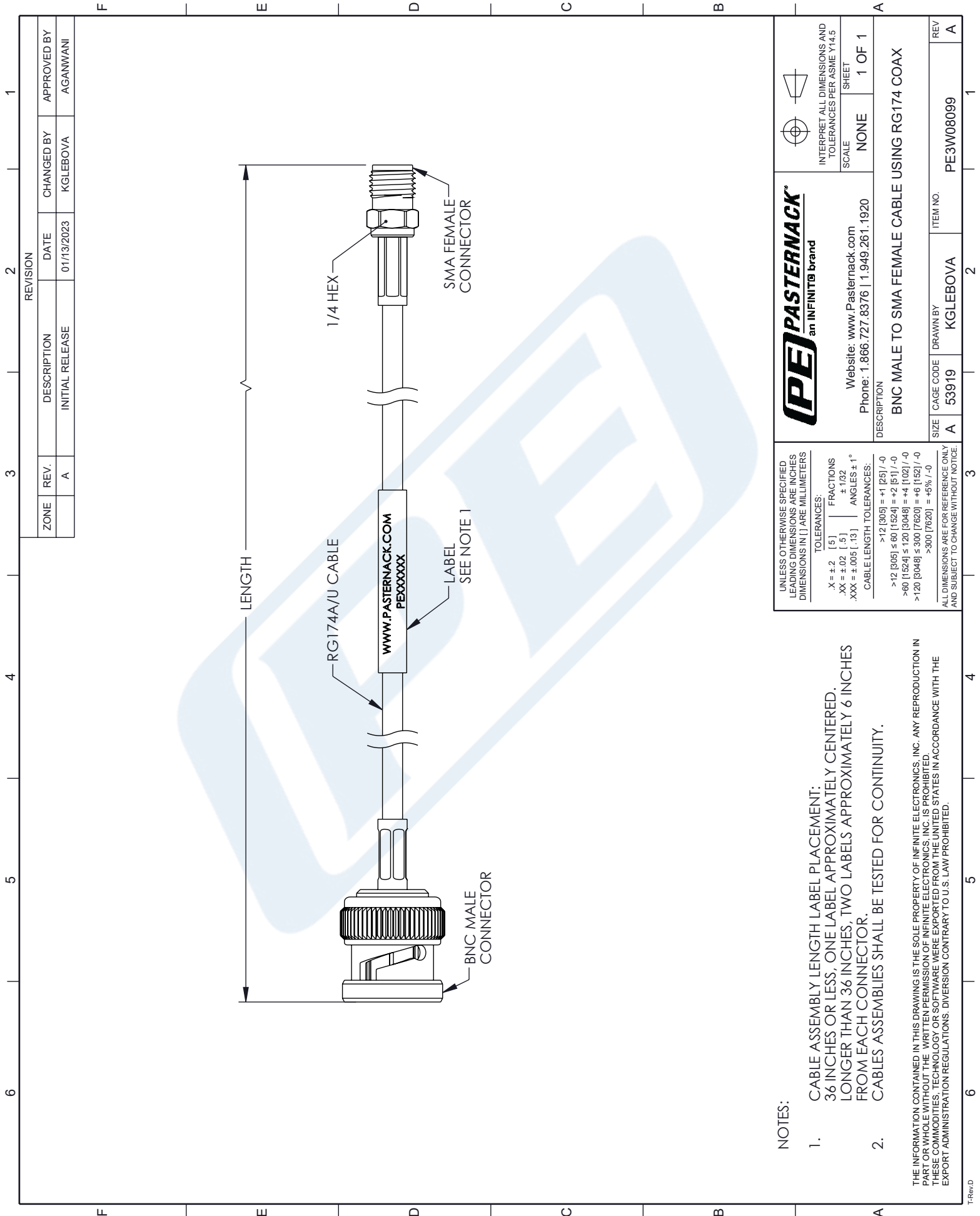
BNC Male to SMA Female Cable Using RG174 Coax from Pasternack Enterprises has same day shipment for domestic and International orders. Our RF, microwave and millimeter wave products maintain a 99.4% availability and are part of the broadest selection in the industry.

Click the following link (or enter part number in "SEARCH" on website) to obtain additional part information including price, inventory and certifications: [BNC Male to SMA Female Cable Using RG174 Coax PE3W08099](https://www.pasternack.com/bnc-male-to-sma-female-cable-using-rg174-pe3w08099-p.aspx)

URL: <https://www.pasternack.com/bnc-male-to-sma-female-cable-using-rg174-pe3w08099-p.aspx>

The information contained in this document is accurate to the best of our knowledge and representative of the part described herein. It may be necessary to make modifications to the part and/or the documentation of the part, in order to implement improvements. Pasternack reserves the right to make such changes as required. Unless otherwise stated, all specifications are nominal. Pasternack does not make any representation or warranty regarding the suitability of the part described herein for any particular purpose, and Pasternack does not assume any liability arising out of the use of any part or documentation.

PE3W08099 CAD Drawing
BNC Male to SMA Female Cable Using RG174 Coax



NOTES:

- CABLE ASSEMBLY LENGTH LABEL PLACEMENT:
36 INCHES OR LESS, ONE LABEL APPROXIMATELY CENTERED.
LONGER THAN 36 INCHES, TWO LABELS APPROXIMATELY 6 INCHES
FROM EACH CONNECTOR.
- CABLES ASSEMBLIES SHALL BE TESTED FOR CONTINUITY.

THE INFORMATION CONTAINED IN THIS DRAWING IS THE SOLE PROPERTY OF INFINITE ELECTRONICS, INC. ANY REPRODUCTION IN PART OR WHOLE WITHOUT THE WRITTEN PERMISSION OF INFINITE ELECTRONICS, INC. IS PROHIBITED.
THESE COMMODITIES, TECHNOLOGY OR SOFTWARE WERE EXPORTED FROM THE UNITED STATES IN ACCORDANCE WITH THE EXPORT ADMINISTRATION REGULATIONS. DIVERSION CONTRARY TO U.S. LAW PROHIBITED.

<div>UNLESS OTHERWISE SPECIFIED LEADING DIMENSIONS ARE INCHES DIMENSIONS IN [] ARE MILLIMETERS</div> <div>TOLERANCES: X = ±.2 [.5] FRACTIONS .XX = ±.02 [.5] ±.1/32 .XXX = ±.005 [.13] ANGLES ± 1° CABLE LENGTH TOLERANCES: >12 [305] = +1 [25] / -0 >12 [305] ≤ 60 [1524] = +2 [51] / -0 >60 [1524] ≤ 120 [3048] = +4 [102] / -0 >120 [3048] ≤ 300 [7620] = +6 [152] / -0 >300 [7620] = +5% / -0</div> <div>ALL DIMENSIONS ARE FOR REFERENCE ONLY AND SUBJECT TO CHANGE WITHOUT NOTICE.</div>	 <div>PASTERNAK an INFINITO brand</div>		 <div>INTERPRET ALL DIMENSIONS AND TOLERANCES PER ASME Y14.5</div>	
	Website: www.Pasternack.com Phone: 1.866.727.8376 1.949.261.1920		SCALE	NONE
	DESCRIPTION BNC MALE TO SMA FEMALE CABLE USING RG174 COAX		SHEET	1 OF 1
SIZE	A	CAGE CODE	53919	ITEM NO.
REV	A	DRAWN BY	KGLEBOVA	PE3W08099