

Push-On SMP Female Right Angle to MMCX Plug  
Right Angle Low Loss Cable Using LMR-100 Coax



**RF Cable Assemblies Technical Data Sheet**

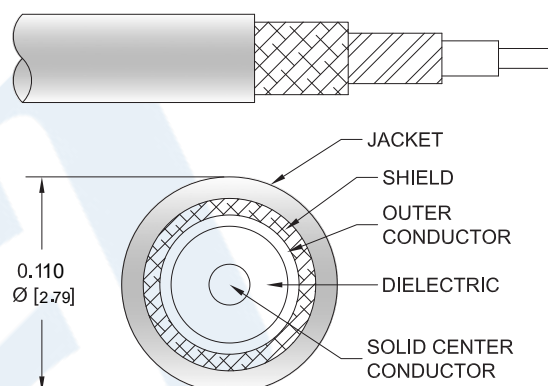
**PE3W09725**

**Configuration**

- Connector 1: Push-OnSMP Female Right Angle
- Connector 2: MMCX Plug Right Angle
- Cable Type: LMR-100A

**Features**

- Max Frequency 3 GHz
- Shielding Effectivity > 90 dB
- 66% Phase Velocity
- Double Shielded
- PVC Jacket



**Applications**

- General Purpose
- Laboratory Use

**Description**

Pasternack's PE3W09725 SMP female push-on right angle to MMCX plug right angle cable using LMR-100 coax is part of our full line of RF components available for same-day shipping. Pasternack's flexible RF cable assemblies are ideal for applications where tight bends and flexure are required. This Pasternack SMP to MMCX cable assembly has a female to plug gender configuration with 50 ohm flexible LMR-100A coax. The PE3W09725 SMP female to MMCX plug cable assembly operates to 3 GHz. The right angle SMP and right angle MMCX interfaces on the LMR-100A cable allow for easier connections in tight spaces. The double shielding of this Pasternack cable assembly provides excellent shielding effectiveness of better than 90 dB.

Custom versions of most RF cable assemblies can be built and shipped same day. Custom cable assembly lengths can be obtained by specifying the desired length on the web site at time of order or by contacting a sales representative. Other available RF cable assembly value added services include connector orientation or clocking, heat shrink booting and custom labeling. RF testing can also be performed to document the electrical performance of your cable assembly.

Click the following link (or enter part number in "SEARCH" on website) to obtain additional part information including price, inventory and certifications: [Push-On SMP Female Right Angle to MMCX Plug Right Angle Low Loss Cable Using LMR-100 Coax PE3W09725](#)



Push-On SMP Female Right Angle to MMCX Plug  
Right Angle Low Loss Cable Using LMR-100 Coax

## RF Cable Assemblies Technical Data Sheet

**PE3W09725**

### Electrical Specifications

Description	Minimum	Typical	Maximum	Units
Frequency Range	DC		3	GHz
VSWR			1.4:1	
Velocity of Propagation		66		%
RF Shielding	90			dB
Group Delay		1.54 [5.05]		ns/ft [ns/m]
Capacitance		30.8 [101.05]		pF/ft [pF/m]
Inductance		0.077 [0.25]		uH/ft [uH/m]
DC Resistance Inner Conductor		81 [265.75]		Ω/1000ft [Ω/Km]
DC Resistance Outer Conductor		9.5 [31.17]		Ω/1000ft [Ω/Km]
Jacket Spark			2,000	Vrms

### Specifications by Frequency

Description	F1	F2	F3	F4	F5	Units
Frequency	0.1	0.25	0.5	1	3	GHz
Insertion Loss (Typ.)	0.07	0.115	0.165	0.24	0.434	dB/ft
	0.23	0.38	0.54	0.79	1.42	dB/m

#### Electrical Specification Notes:

Insertion Loss does not include the loss of the connectors. Insertion Loss is estimated as 0.2 dB per connector.

### Mechanical Specifications

#### Cable Assembly

Weight 0.025 lbs [11.34 g]

#### Cable

Cable Type LMR-100A  
Impedance 50 Ohms  
Inner Conductor Type Solid  
Inner Conductor Material and Plating Copper Clad Steel  
Dielectric Type PE  
Number of Shields 2  
Shield Layer 1 Aluminum Tape  
Shield Layer 2 Tinned Copper Braid  
Jacket Material PVC, Black  
Jacket Diameter 0.11 in [2.79 mm]

One Time Minimum Bend Radius 0.25 in [6.35 mm]

Click the following link (or enter part number in "SEARCH" on website) to obtain additional part information including price, inventory and certifications: [Push-On SMP Female Right Angle to MMCX Plug Right Angle Low Loss Cable Using LMR-100 Coax PE3W09725](#)



Push-On SMP Female Right Angle to MMCX Plug  
Right Angle Low Loss Cable Using LMR-100 Coax

**RF Cable Assemblies Technical Data Sheet**

**PE3W09725**

Repeated Minimum Bend Radius	1 in [25.4 mm]
Bending Moment	0.1 lbs-ft [0.14 N-m]
Flat Plate Crush	10 lbs/in [0.18 Kg/mm]
Tensile Strength	15 lbs [6.8 Kg]

**Connectors**

Description	Connector 1	Connector 2
Type	SMP Female Right Angle	MMCX Plug Right Angle
Specification	MIL-STD-348A	BS EN 122340
Impedance	50 Ohms	50 Ohms
Connection Method	Push-On	
Contact Material and Plating	Beryllium Copper, Gold	Brass, Gold
Contact Plating Specification	30µ in. minimum	30 µin minimum
Dielectric Type	Teflon	PTFE
Outer Conductor Material and Plating	Beryllium Copper, Gold	
Outer Conductor Plating Specification	3µ in. minimum	
Body Material and Plating	Brass, Gold	Brass, Gold
Body Plating Specification	3µ in. minimum	3 µin minimum

**Environmental Specifications**

**Temperature**

Operating Range	-40 to +85 deg C
-----------------	------------------

**Compliance Certifications** (see [product page](#) for current document)

**Plotted and Other Data**

Notes:

Click the following link (or enter part number in "SEARCH" on website) to obtain additional part information including price, inventory and certifications: [Push-On SMP Female Right Angle to MMCX Plug Right Angle Low Loss Cable Using LMR-100 Coax PE3W09725](#)



## Push-On SMP Female Right Angle to MMCX Plug Right Angle Low Loss Cable Using LMR-100 Coax

### RF Cable Assemblies Technical Data Sheet

**PE3W09725**

#### How to Order

Part Number Configuration:

**PE3W09725**

- **xx**

**uu**

Unit of Measure:  
cm = Centimeters  
<blank> = Inches  
Length  
Base Number

Example: PE3W09725-12 = 12 inches long cable  
PE3W09725-100cm = 100 cm long cable

Push-On SMP Female Right Angle to MMCX Plug Right Angle Low Loss Cable Using LMR-100 Coax from Pasternack Enterprises has same day shipment for domestic and International orders. Our RF, microwave and millimeter wave products maintain a 99.4% availability and are part of the broadest selection in the industry.

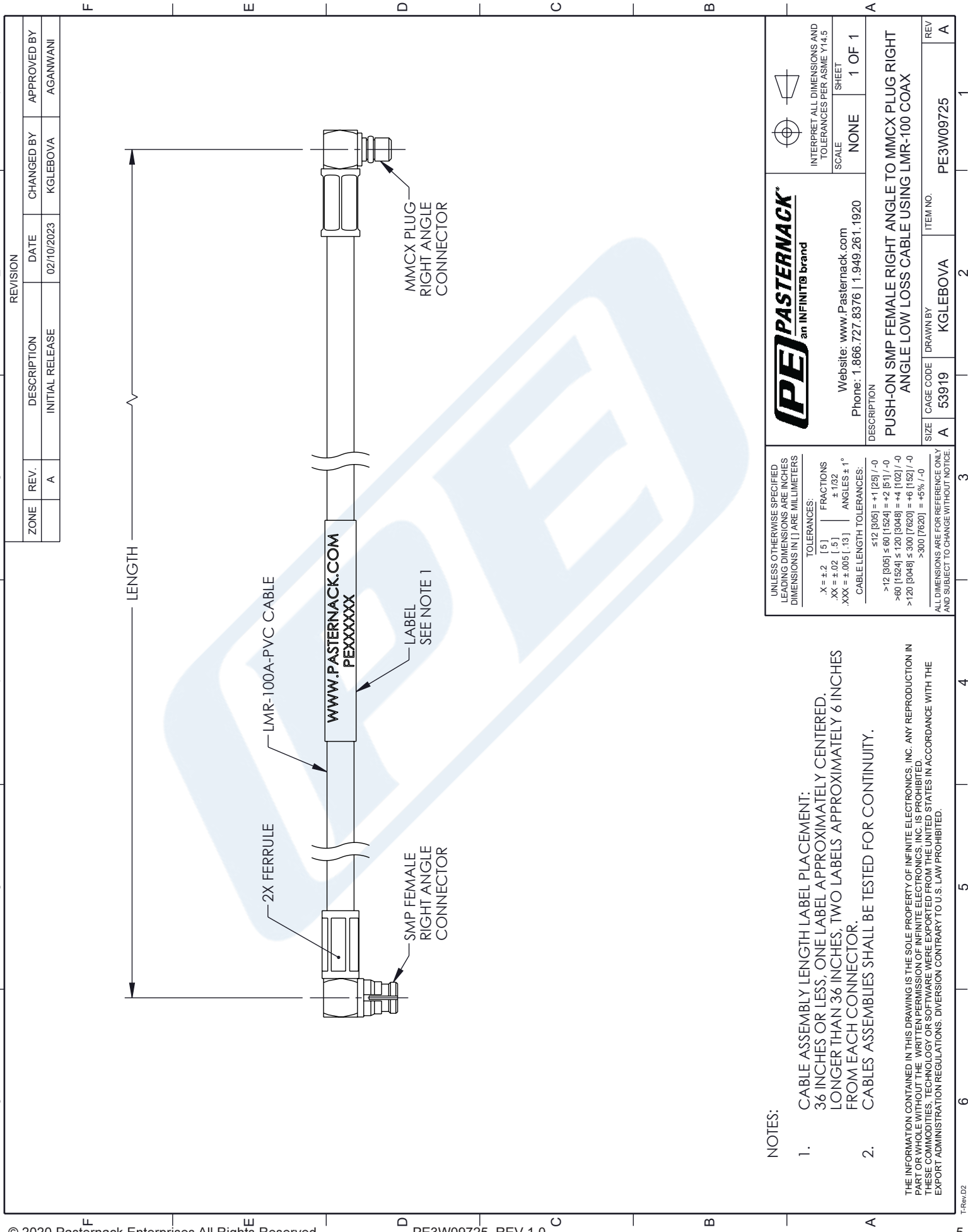
Click the following link (or enter part number in "SEARCH" on website) to obtain additional part information including price, inventory and certifications: [Push-On SMP Female Right Angle to MMCX Plug Right Angle Low Loss Cable Using LMR-100 Coax PE3W09725](https://www.pasternack.com/push-on-smp-female-right-angle-to-mmcx-plug-right-angle-low-loss-cable-using-lmr-100-coax-pe3w09725)

URL: <https://www.pasternack.com/push-on-smp-female-right-angle-to-mmcx-plug-right-angle-low-loss-cable-using-lmr-100-pe3w09725-p.aspx>

The information contained in this document is accurate to the best of our knowledge and representative of the part described herein. It may be necessary to make modifications to the part and/or the documentation of the part, in order to implement improvements. Pasternack reserves the right to make such changes as required. Unless otherwise stated, all specifications are nominal. Pasternack does not make any representation or warranty regarding the suitability of the part described herein for any particular purpose, and Pasternack does not assume any liability arising out of the use of any part or documentation.

# PE3W09725 CAD Drawing

Push-On SMP Female Right Angle to MMCX Plug Right Angle  
Low Loss Cable Using LMR-100 Coax



## NOTES:

1. CABLE ASSEMBLY LENGTH LABEL PLACEMENT:  
36 INCHES OR LESS, ONE LABEL APPROXIMATELY CENTERED.  
LONGER THAN 36 INCHES, TWO LABELS APPROXIMATELY 6 INCHES  
FROM EACH CONNECTOR.
  2. CABLES ASSEMBLIES SHALL BE TESTED FOR CONTINUITY.
- THE INFORMATION CONTAINED IN THIS DRAWING IS THE SOLE PROPERTY OF INFINITE ELECTRONICS, INC. ANY REPRODUCTION IN  
PART OR WHOLE WITHOUT THE WRITTEN PERMISSION OF INFINITE ELECTRONICS, INC. IS PROHIBITED.  
THESE COMMODITIES, TECHNOLOGY OR SOFTWARE WERE EXPORTED FROM THE UNITED STATES IN ACCORDANCE WITH THE  
EXPORT ADMINISTRATION REGULATIONS. DIVERSION CONTRARY TO U.S. LAW PROHIBITED.

<b>PASTERNAK</b> an INFINITE brand		INTERPRET ALL DIMENSIONS AND TOLERANCES PER ASME Y14.5 SCALE: NONE SHEET: 1 OF 1	
Website: www.Pasternack.com Phone: 1.866.727.8376   1.949.261.1920		DESCRIPTION: <b>PUSH-ON SMP FEMALE RIGHT ANGLE TO MMCX PLUG RIGHT ANGLE LOW LOSS CABLE USING LMR-100 COAX</b>	
SIZE: A	CAGE CODE: 53919	DRAWN BY: KGLEBOVA	ITEM NO.: PE3W09725
UNLESS OTHERWISE SPECIFIED LEADING DIMENSIONS ARE INCHES DIMENSIONS IN [ ] ARE MILLIMETERS TOLERANCES: .X = ±.2 [ .5 ]    FRACTIONS ±.1/32 .XX = ±.02 [ .5 ]    ANGLES ± 1° .XXX = ±.005 [ .13 ] CABLE LENGTH TOLERANCES: ≤12 [305] = ±.1 [25] / -0 >12 [305] ≤ 60 [1524] = ±.2 [51] / -0 >60 [1524] ≤ 120 [3048] = ±.4 [102] / -0 >120 [3048] ≤ 300 [7620] = ±.6 [152] / -0 >300 [7620] = ±.5% / -0 ALL DIMENSIONS ARE FOR REFERENCE ONLY AND SUBJECT TO CHANGE WITHOUT NOTICE.		REV: A	