



SMA Female Bulkhead to TNC Male  
Cable Using PE-SR402FL Coax

**RF Cable Assemblies Technical Data Sheet**

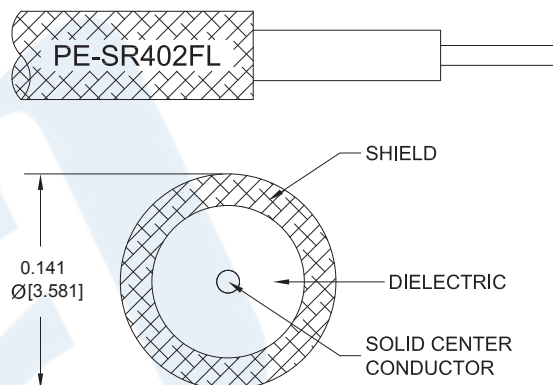
**PE3W09992**

**Configuration**

- Connector 1: SMA Female Bulkhead
- Connector 2: TNC Male
- Cable Type: PE-SR402FL

**Features**

- Shielding Effectivity > 110 dB
- 69.5% Phase Velocity



**Applications**

- General Purpose
- Laboratory Use

**Description**

Pasternack's PE3W09992 SMA female bulkhead to TNC male cable using PE-SR402FL coax is part of our full line of RF components available for same-day shipping. Pasternack's formable RF cable assemblies provide an alternative to costly pre-formed semi-rigid assemblies since they are hand formable. This Pasternack SMA to TNC cable assembly has a female to male gender configuration with 50 ohm formable PE-SR402FL coax. Our RF cable assembly with SMA bulkhead interface allows designers to create external connections on their product enclosures, and can be used in a variety of other rack mount and panel mount applications.

Custom versions of most RF cable assemblies can be built and shipped same day. Custom cable assembly lengths can be obtained by specifying the desired length on the web site at time of order or by contacting a sales representative. Other available RF cable assembly value added services include connector orientation or clocking, heat shrink booting and custom labeling. RF testing can also be performed to document the electrical performance of your cable assembly.

**Electrical Specifications**

Description	Minimum	Typical	Maximum	Units
Velocity of Propagation		69.5		%
RF Shielding	110			dB
Capacitance		29 [95.14]		pF/ft [pF/m]
DC Resistance Inner Conductor		7.8 [25.59]		Ω/1000ft [Ω/Km]
DC Resistance Outer Conductor		5.5 [18.04]		Ω/1000ft [Ω/Km]

Click the following link (or enter part number in "SEARCH" on website) to obtain additional part information including price, inventory and certifications: [SMA Female Bulkhead to TNC Male Cable Using PE-SR402FL Coax PE3W09992](#)



SMA Female Bulkhead to TNC Male  
Cable Using PE-SR402FL Coax

**RF Cable Assemblies Technical Data Sheet**

**PE3W09992**

**Mechanical Specifications**

**Cable Assembly**

Weight 0.089 lbs [40.37 g]

**Cable**

Cable Type PE-SR402FL  
 Impedance 50 Ohms  
 Inner Conductor Type Solid  
 Inner Conductor Material and Plating Copper, Silver  
 Dielectric Type PTFE  
 Outer Conductor Material and Plating Tinned Copper Braid  
 Repeated Minimum Bend Radius 0.625 in [15.88 mm]

**Connectors**

Description	Connector 1	Connector 2
Type	SMA Female Bulkhead	TNC Male
Specification	MIL-STD-348A	
Impedance	50 Ohms	50 Ohms
Contact Material and Plating	Beryllium Copper, Gold	
Contact Plating Specification	50 µin minimum	
Dielectric Type	PTFE	
Body Material and Plating	Stainless Steel, Gold	Brass, Nickel
Body Plating Specification	30 µin minimum	

**Compliance Certifications** (see [product page](#) for current document)

**Plotted and Other Data**

Notes:

Click the following link (or enter part number in "SEARCH" on website) to obtain additional part information including price, inventory and certifications: [SMA Female Bulkhead to TNC Male Cable Using PE-SR402FL Coax PE3W09992](#)



SMA Female Bulkhead to TNC Male  
Cable Using PE-SR402FL Coax

**RF Cable Assemblies Technical Data Sheet**

**PE3W09992**

**How to Order**

Part Number Configuration:

**PE3W09992**

- **xx**

**uu**

Unit of Measure:  
cm = Centimeters  
<blank> = Inches  
Length  
Base Number

Example: PE3W09992-12 = 12 inches long cable  
PE3W09992-100cm = 100 cm long cable

SMA Female Bulkhead to TNC Male Cable Using PE-SR402FL Coax from Pasternack Enterprises has same day shipment for domestic and International orders. Our RF, microwave and millimeter wave products maintain a 99.4% availability and are part of the broadest selection in the industry.

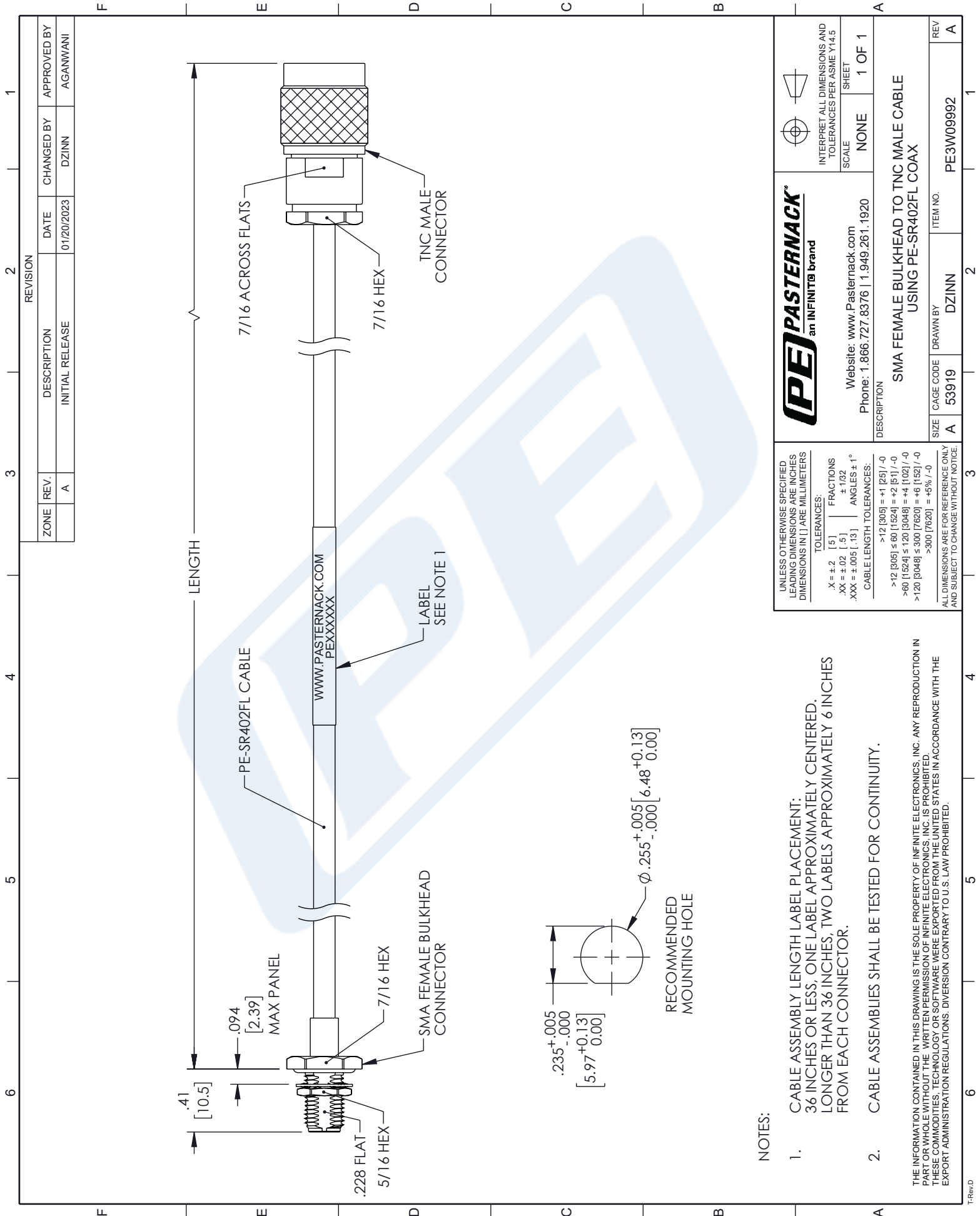
Click the following link (or enter part number in "SEARCH" on website) to obtain additional part information including price, inventory and certifications: [SMA Female Bulkhead to TNC Male Cable Using PE-SR402FL Coax PE3W09992](#)

URL: <https://www.pasternack.com/sma-female-bulkhead-to-tnc-male-cable-using-pe-sr402fl-pe3w09992-p.aspx>

The information contained in this document is accurate to the best of our knowledge and representative of the part described herein. It may be necessary to make modifications to the part and/or the documentation of the part, in order to implement improvements. Pasternack reserves the right to make such changes as required. Unless otherwise stated, all specifications are nominal. Pasternack does not make any representation or warranty regarding the suitability of the part described herein for any particular purpose, and Pasternack does not assume any liability arising out of the use of any part or documentation.

# PE3W09992 CAD Drawing

SMA Female Bulkhead to TNC Male Cable Using PE-SR402FL Coax



**NOTES:**

- CABLE ASSEMBLY LENGTH LABEL PLACEMENT:  
36 INCHES OR LESS, ONE LABEL APPROXIMATELY CENTERED.  
LONGER THAN 36 INCHES, TWO LABELS APPROXIMATELY 6 INCHES FROM EACH CONNECTOR.
- CABLE ASSEMBLIES SHALL BE TESTED FOR CONTINUITY.

THE INFORMATION CONTAINED IN THIS DRAWING IS THE SOLE PROPERTY OF INFINITE ELECTRONICS, INC. ANY REPRODUCTION IN PART OR WHOLE WITHOUT THE WRITTEN PERMISSION OF INFINITE ELECTRONICS, INC. IS PROHIBITED. THESE COMMODITIES, TECHNOLOGY OR SOFTWARE WERE EXPORTED FROM THE UNITED STATES IN ACCORDANCE WITH THE EXPORT ADMINISTRATION REGULATIONS. DIVERSION CONTRARY TO U.S. LAW PROHIBITED.

ZONE	REV.	DESCRIPTION	DATE	CHANGED BY	APPROVED BY
	A	INITIAL RELEASE	01/20/2023	DZINN	AGAN/WANI

<p><b>PASTERNACK</b> an INFINITO brand</p> <p>Website: <a href="http://www.Pasternack.com">www.Pasternack.com</a> Phone: 1.866.727.8376   1.949.261.1920</p>		<p>INTERPRET ALL DIMENSIONS AND TOLERANCES PER ASME Y14.5</p> <p>SCALE: NONE</p> <p>SHEET: 1 OF 1</p>
<p>DESCRIPTION: SMA FEMALE BULKHEAD TO TNC MALE CABLE USING PE-SR402FL COAX</p>		
SIZE: A	CAGE CODE: 53919	ITEM NO.: PE3W09992
DRAWN BY: DZINN		REV: A

UNLESS OTHERWISE SPECIFIED LEADING DIMENSIONS ARE INCHES DIMENSIONS IN [ ] ARE MILLIMETERS

TOLERANCES:  
 .X = ±.2 [5] FRACTIONS ±.1/32  
 .XX = ±.02 [-.5] ±.1/32  
 .XXX = ±.005 [-.13] ANGLES ± 1°

CABLE LENGTH TOLERANCES:  
 >12 [305] = +1 [25] / -0  
 >12 [305] ≤ 60 [1524] = +2 [51] / -0  
 >60 [1524] ≤ 120 [3048] = +4 [102] / -0  
 >120 [3048] ≤ 300 [7620] = +6 [152] / -0  
 >300 [7620] = +5% / -0

ALL DIMENSIONS ARE FOR REFERENCE ONLY AND SUBJECT TO CHANGE WITHOUT NOTICE.