



2.92mm Female to SMA Male Cable Using PE-SR402FLJ Coax

RF Cable Assemblies Technical Data Sheet

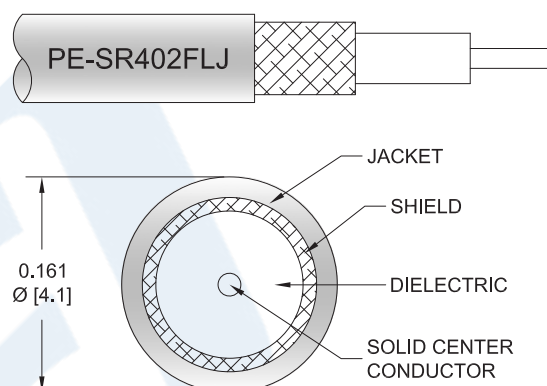
PE3W10476

Configuration

- Connector 1: 2.92mm Female
- Connector 2: SMA Male
- Cable Type: PE-SR402FLJ

Features

- Shielding Effectivity > 100 dB
- 70% Phase Velocity
- FEP Jacket



Applications

- General Purpose
- Laboratory Use

Description

Pasternack's PE3W10476 2.92mm female to SMA male cable using PE-SR402FLJ coax is part of our full line of RF components available for same-day shipping. Pasternack's formable RF cable assemblies provide an alternative to costly pre-formed semi-rigid assemblies since they are hand formable. This Pasternack 2.92mm to SMA cable assembly has a female to male gender configuration with 50 ohm formable PE-SR402FLJ coax.

Custom versions of most RF cable assemblies can be built and shipped same day. Custom cable assembly lengths can be obtained by specifying the desired length on the web site at time of order or by contacting a sales representative. Other available RF cable assembly value added services include connector orientation or clocking, heat shrink booting and custom labeling. RF testing can also be performed to document the electrical performance of your cable assembly.

Electrical Specifications

Description	Minimum	Typical	Maximum	Units
Velocity of Propagation		70		%
RF Shielding	100			dB
Group Delay		1.43 [4.69]		ns/ft [ns/m]
Capacitance		29 [95.14]		pF/ft [pF/m]
DC Resistance Inner Conductor		8.23 [27]		Ω/1000ft [Ω/Km]

Mechanical Specifications

Cable Assembly

Click the following link (or enter part number in "SEARCH" on website) to obtain additional part information including price, inventory and certifications: [2.92mm Female to SMA Male Cable Using PE-SR402FLJ Coax PE3W10476](#)



2.92mm Female to SMA Male Cable Using PE-SR402FLJ Coax

RF Cable Assemblies Technical Data Sheet

PE3W10476

Weight	0.061 lbs [27.67 g]
Cable	
Cable Type	PE-SR402FLJ
Impedance	50 Ohms
Inner Conductor Type	Solid
Inner Conductor Material and Plating	Copper, Silver
Dielectric Type	PTFE
Outer Conductor Material and Plating	Tinned Copper Braid
Jacket Material	FEP, Black
Jacket Diameter	0.161 in [4.09 mm]
One Time Minimum Bend Radius	0.315 in [8 mm]
Repeated Minimum Bend Radius	1.575 in [40.01 mm]

Connectors

Description	Connector 1	Connector 2
Type	2.92mm Female	SMA Male
Impedance	50 Ohms	50 Ohms
Contact Material and Plating	Gold	
Dielectric Type	PPO	
Body Material and Plating	Passivated Stainless Steel	Brass, Gold over Nickel
Coupling Nut Material and Plating		Passivated Stainless Steel
Hex Size		5/16 inch
Torque		8 in-lbs [0.9 Nm]

Compliance Certifications (see [product page](#) for current document)

Plotted and Other Data

Notes:

Click the following link (or enter part number in "SEARCH" on website) to obtain additional part information including price, inventory and certifications: [2.92mm Female to SMA Male Cable Using PE-SR402FLJ Coax PE3W10476](#)



2.92mm Female to SMA Male Cable Using PE-SR402FLJ Coax

RF Cable Assemblies Technical Data Sheet

PE3W10476

How to Order

Part Number Configuration:

PE3W10476

- **xx**

uu

Unit of Measure:
cm = Centimeters
<blank> = Inches
Length
Base Number

Example: PE3W10476-12 = 12 inches long cable
PE3W10476-100cm = 100 cm long cable

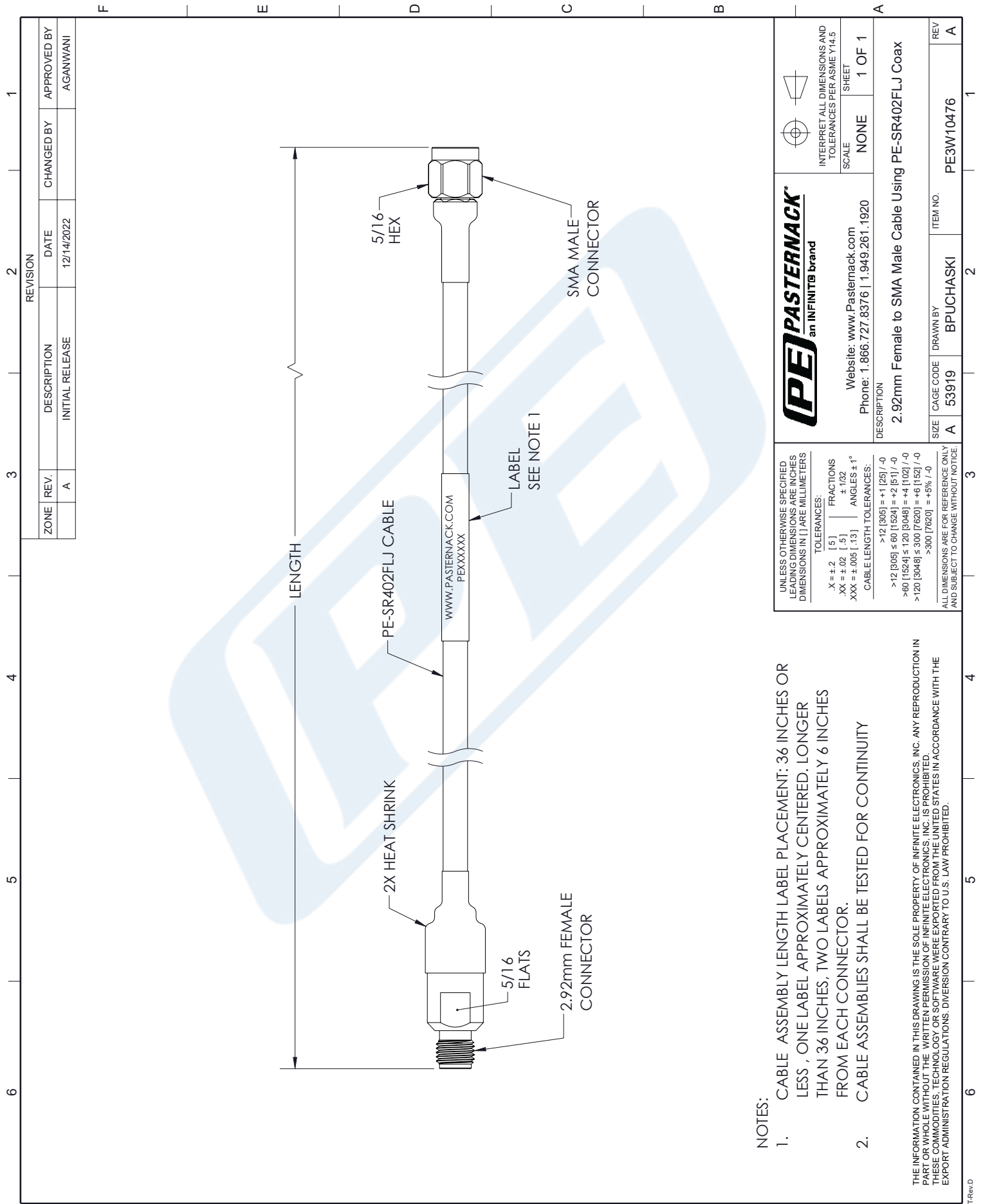
2.92mm Female to SMA Male Cable Using PE-SR402FLJ Coax from Pasternack Enterprises has same day shipment for domestic and International orders. Our RF, microwave and millimeter wave products maintain a 99.4% availability and are part of the broadest selection in the industry.

Click the following link (or enter part number in "SEARCH" on website) to obtain additional part information including price, inventory and certifications: [2.92mm Female to SMA Male Cable Using PE-SR402FLJ Coax PE3W10476](https://www.pasternack.com/2.92mm-female-to-sma-male-cable-using-pe-sr402flj-pe3w10476-p.aspx)

URL: <https://www.pasternack.com/2.92mm-female-to-sma-male-cable-using-pe-sr402flj-pe3w10476-p.aspx>

The information contained in this document is accurate to the best of our knowledge and representative of the part described herein. It may be necessary to make modifications to the part and/or the documentation of the part, in order to implement improvements. Pasternack reserves the right to make such changes as required. Unless otherwise stated, all specifications are nominal. Pasternack does not make any representation or warranty regarding the suitability of the part described herein for any particular purpose, and Pasternack does not assume any liability arising out of the use of any part or documentation.




2.92mm Female to SMA Male Cable Using PE-SR402FLJ Coax



NOTES:

1. CABLE ASSEMBLY LENGTH LABEL PLACEMENT: 36 INCHES OR LESS , ONE LABEL APPROXIMATELY CENTERED, LONGER THAN 36 INCHES, TWO LABELS APPROXIMATELY 6 INCHES FROM EACH CONNECTOR.
2. CABLE ASSEMBLIES SHALL BE TESTED FOR CONTINUITY

THE INFORMATION CONTAINED IN THIS DRAWING IS THE SOLE PROPERTY OF INFINITE ELECTRONICS, INC. ANY REPRODUCTION IN PART OR WHOLE WITHOUT THE WRITTEN PERMISSION OF INFINITE ELECTRONICS, INC. IS PROHIBITED. THESE COMMODITIES, TECHNOLOGY OR SOFTWARE WERE EXPORTED FROM THE UNITED STATES IN ACCORDANCE WITH THE EXPORT ADMINISTRATION REGULATIONS. DIVERSION CONTRARY TO U.S. LAW PROHIBITED.

<p>UNLESS OTHERWISE SPECIFIED LEADING DIMENSIONS ARE INCHES DIMENSIONS IN [] ARE MILLIMETERS</p>		<p>TOLERANCES:</p> <p>.X = ±.2 .5 = 1/32 .XX = ±.02 .5 = 1/32 .XXX = ±.005 .13 = 1/16</p>	<p>CABLE LENGTH TOLERANCES:</p> <p>>120 [305] ≤ 300 [7620] = +6 [152] / -0 >300 [7620] = +4 [51] / -0</p>	<p>ALL DIMENSIONS ARE TO REFERENCE ONLY AND SUBJECT TO CHANGE WITHOUT NOTICE</p>
	<p>PASTERNAK® an INFINITI® brand</p>	<p>Website: www.Pasternak.com Phone: 1.866.727.8376 1.949.261.1920</p>	<p>DESCRIPTION 2.92mm Female to SMA Male Cable Using PE-SR402FLJ Coax</p>	<p>INTERPRET ALL DIMENSIONS AND TOLERANCES PER ASME Y14.5</p>
	<p>SCALE</p>	<p>NONE</p>	<p>SHEET</p>	<p>1 OF 1</p>
<p>SIZE</p>	<p>A</p>	<p>CAGE CODE</p>	<p>53919</p>	<p>REV</p>
<p>DRAWN BY</p>	<p>BPUCHASKI</p>	<p>ITEM NO.</p>	<p>PE3W10476</p>	<p>A</p>