



1.85mm Female Connector Clamp Attachment Vertical Launch PCB

RF Connectors Technical Data Sheet

PE45688

Configuration

- 1.85mm Female Connector
- 50 Ohms
- Straight Body Geometry
- Connector Interface Types: Vertical Launch

Features

- Max. Operating Frequency 67 GHz
- Good VSWR of 1.6:1

Applications

- General Purpose Test
- Chip Evaluations
- Vertical Launch Test Fixtures
- PCB Applications
- High Speed Digital Boards

Description

Pasternack's PE45688 1.85mm female connector with clamp attachment for Vertical Launch PCB is part of our full line of RF components available for same-day shipping. Our 1.85mm female connector operates up to a maximum frequency of 67 GHz and offers good VSWR of 1.6:1.

Our 1.85mm female connector PE45688 datasheet specifications and drawing with dimensions are shown below in this PDF. Pasternack's broad catalog of RF, microwave and millimeter wave connectors allows designers to configure and customize their signal connections however they like. Whether the need is to provide an I/O for a board design, or simply create a custom cable assembly configuration, Pasternack has the right connector for the job. Pasternack can also expertly build your custom cable assemblies for you and ship same-day.

Electrical Specifications

Description	Minimum	Typical	Maximum	Units
Frequency Range	DC		67	GHz
VSWR			1.6:1	

Mechanical Specifications

Size	
Length	0.5 in [12.7 mm]
Width/Dia.	0.39 in [9.91 mm]
Weight	2.3 lbs [1.04 kg]

Click the following link (or enter part number in "SEARCH" on website) to obtain additional part information including price, inventory and certifications: [1.85mm Female Connector Clamp Attachment Vertical Launch PCB PE45688](#)



1.85mm Female Connector Clamp Attachment Vertical Launch PCB

RF Connectors Technical Data Sheet

PE45688

Material Specifications

Description	Material	Plating
Outer Conductor	Beryllium Copper	Gold
Body	Stainless Steel	

Environmental Specifications

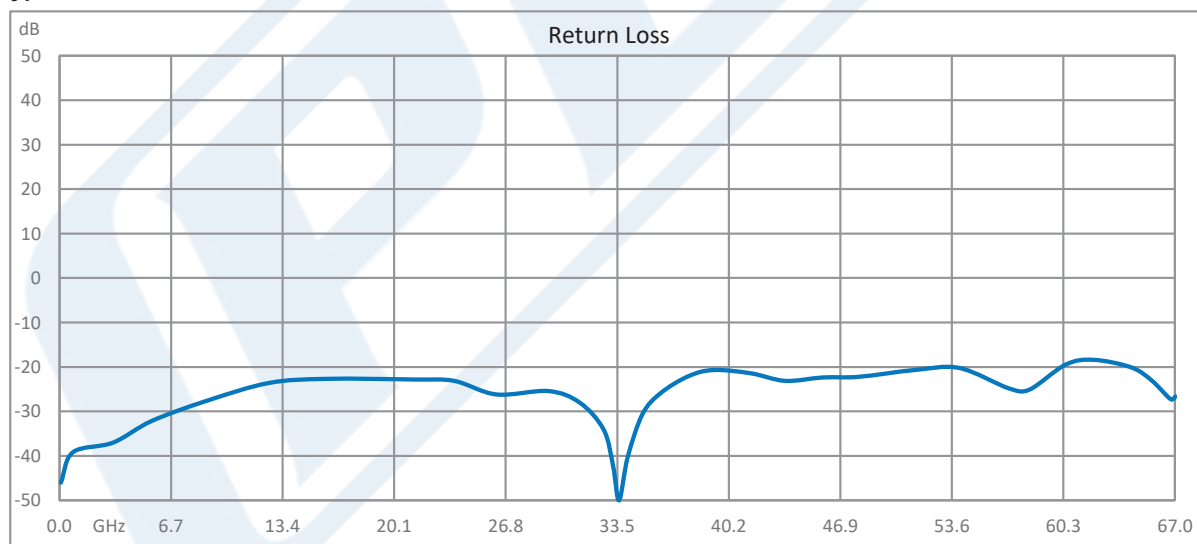
Compliance Certifications (see [product page](#) for current document)

Plotted and Other Data

Notes:

- Return Loss and Insertion Loss measured by connecting two connectors back-to-back.

Typical Performance Data



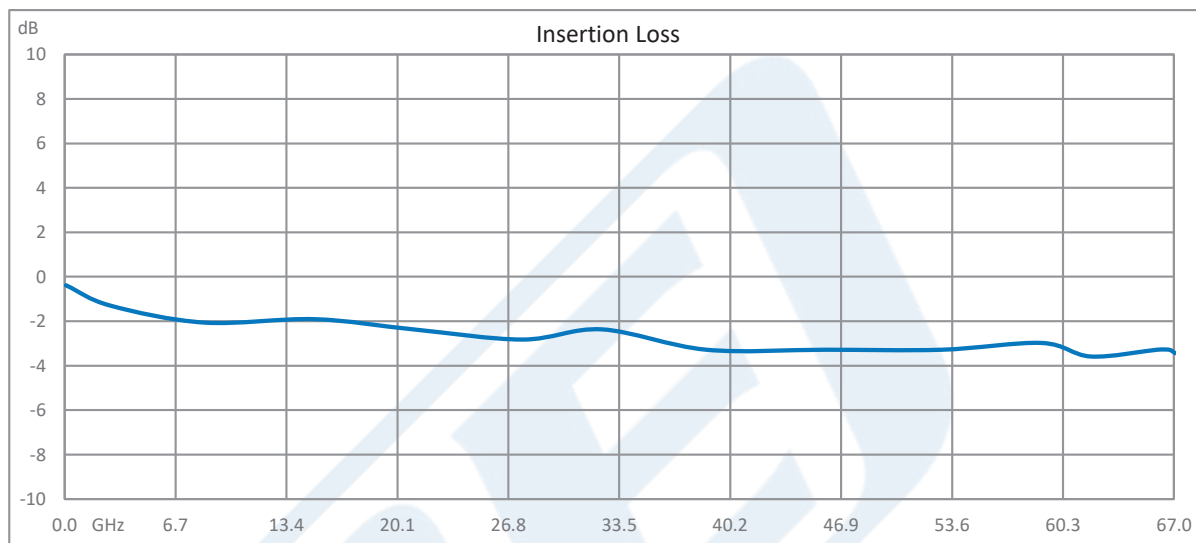
Click the following link (or enter part number in "SEARCH" on website) to obtain additional part information including price, inventory and certifications: [1.85mm Female Connector Clamp Attachment Vertical Launch PCB PE45688](#)



1.85mm Female Connector Clamp Attachment Vertical Launch PCB

RF Connectors Technical Data Sheet

PE45688



1.85mm Female Connector Clamp Attachment Vertical Launch PCB from Pasternack Enterprises has same day shipment for domestic and International orders. Our RF, microwave and millimeter wave products maintain a 99.4% availability and are part of the broadest selection in the industry.

Click the following link (or enter part number in "SEARCH" on website) to obtain additional part information including price, inventory and certifications: [1.85mm Female Connector Clamp Attachment Vertical Launch PCB PE45688](https://www.pasternack.com/1.85mm-female-vertical-launch-pcb-connector-pe45688-p.aspx)

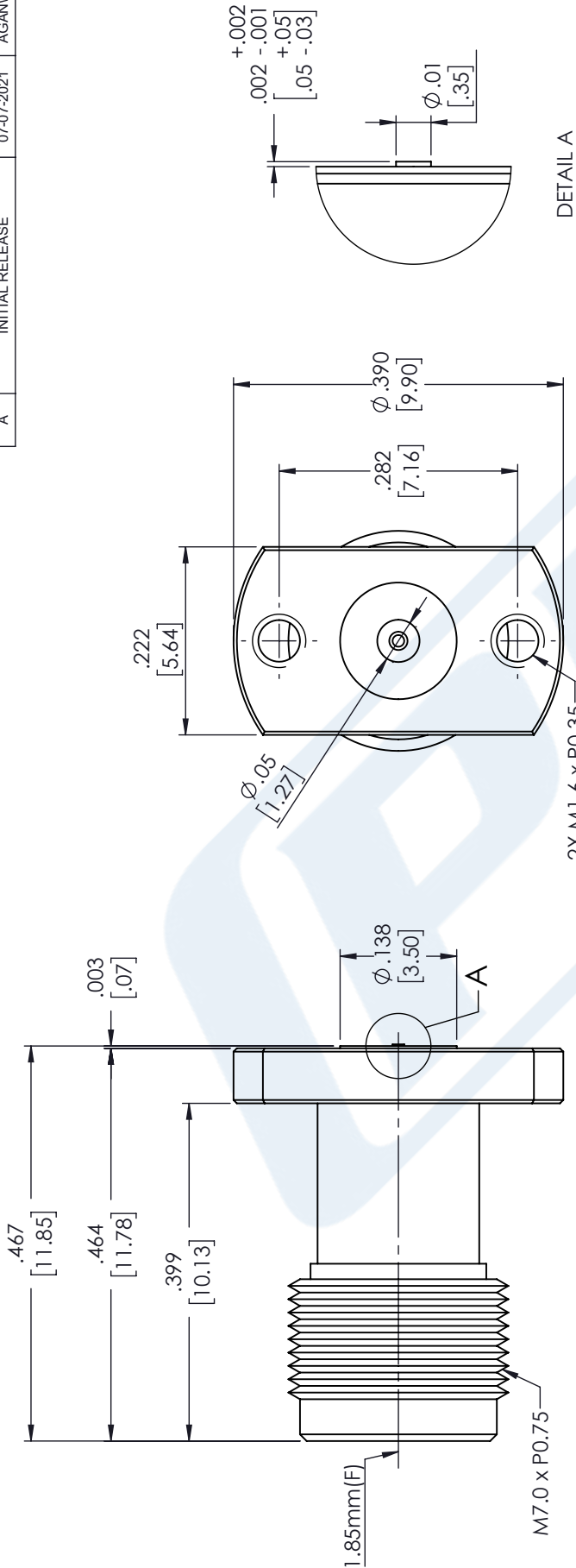
URL: <https://www.pasternack.com/1.85mm-female-vertical-launch-pcb-connector-pe45688-p.aspx>

The information contained in this document is accurate to the best of our knowledge and representative of the part described herein. It may be necessary to make modifications to the part and/or the documentation of the part, in order to implement improvements. Pasternack reserves the right to make such changes as required. Unless otherwise stated, all specifications are nominal. Pasternack does not make any representation or warranty regarding the suitability of the part described herein for any particular purpose, and Pasternack does not assume any liability arising out of the use of any part or documentation.

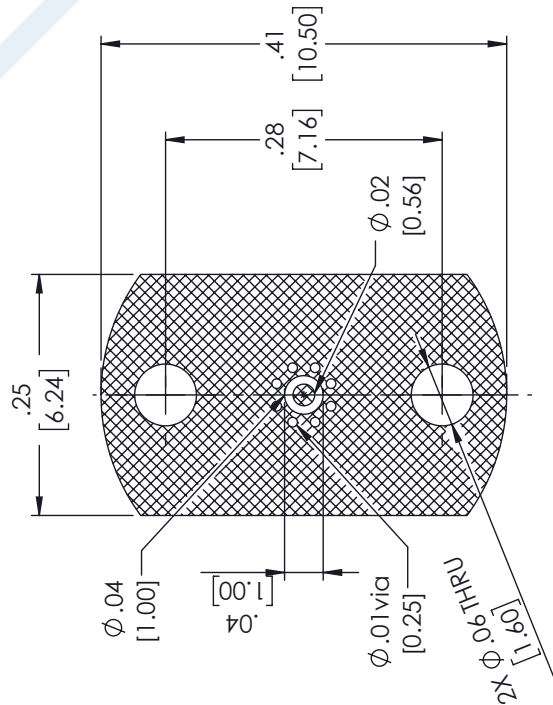
PE45688 CAD Drawing

1.85mm Female Connector Clamp Attachment Vertical Launch PCB

REVISIONS			
REV.	DESCRIPTION	DATE	APPROVED
A	INITIAL RELEASE	07-07-2021	AGANWANI



RECOMMENDED
TOP PCB PATTERN



* PCB : R04003C 8mil

UNLESS OTHERWISE SPECIFIED
LEADING DIMENSIONS ARE IN INCHES
DIMENSIONS IN [] ARE MILLIMETERS

TOLERANCES:

X = ± .2 [5.08] FRACTIONS

.XX = ± .02 [.51] ± 1/32

.XXX = ± .005 [.13] ANGLES ± 1°

CABLE LENGTH (L) TOLERANCES:

L ≤ 12 [305] = +1 [25] / -0

12 [305] < L ≤ 60 [1524] = +1 [25] / -0

60 [1524] < L ≤ 120 [3048] = +4 [102] / -0

120 [3048] < L ≤ 300 [7620] = +6 [152] / -0

300 [7620] < L = +5% / -0

ALL DIMENSIONS SHOWN
ARE FOR REFERENCE ONLY.

THIRD-ANGLE PROJECTION

THE INFORMATION AND
DESIGN IN THIS DOCUMENT
IS THE PROPERTY OF
PASTERNAK CORPORATION
ALL RIGHTS RESERVED.

SHEET 1 OF 1

SCALE N/A

REV A

ITEM NO. PE45688

DRAWN BY MVEERAPPAN

SIZE A

CAGE CODE 53919

300 [7620] < L = +5% / -0

ALL DIMENSIONS SHOWN
ARE FOR REFERENCE ONLY.

THESE COMMODITIES, TECHNOLOGY OR SOFTWARE WERE EXPORTED FROM THE UNITED STATES IN ACCORDANCE
WITH THE EXPORT ADMINISTRATION REGULATIONS. DIVERSION CONTRARY TO U.S. LAW PROHIBITED.