



7/16 DIN Female Low PIM Connector Solder Attachment 4 Hole Flange Mount for SPF-250, SPO-250, SPP- 250-LLPL, 1/4" Superflexible, PE-1/4SFHC

RF Connectors Technical Data Sheet

PE45990

Configuration

- 7/16 DIN Female Connector
- 50 Ohms
- Straight Body Geometry
- Connector Interface Types: SPF-250, SPO-250, SPP-250-LLPL, 1/4" Superflexible, PE-1/4SFHC
- 4 Hole Flange
- Low PIM Design

Features

- Max. Operating Frequency 6 GHz
- Silver Plated Bronze Contact
- Max of VSWR 1.1:1 at 1GHz, Max of VSWR 1.25:1 at 3GHz, Max of VSWR 1.35:1 at 6GHz
- PIM is less than -160dBc at 1.8GHz typical

Applications

- General Purpose Test
- Rack and Panel Mount Applications
- Wireless Communications
- Custom Cable Assemblies
- Low PIM Applications

Description

Pasternack's PE45990 , 7/16 DIN, Low PIM, Connector is part of our full line of RF components available for same-day shipping. Our 7/16 DIN female connector operates up to a maximum frequency of 6 GHz. This 7/16 DIN 4 hole flange connector allows designers to create external connections on their product enclosures, and can be used in a variety of other rack mount and panel mount applications.

Our 7/16 DIN female 4 hole flange connector PE45990 datasheet specifications and drawing with dimensions are shown below in this PDF. Pasternack's broad catalog of RF, microwave and millimeter wave connectors allows designers to configure and customize their signal connections however they like. Whether the need is to provide an I/O for a board design, or simply create a custom cable assembly configuration, Pasternack has the right connector for the job. Pasternack can also expertly build your custom cable assemblies for you and ship same-day.

Electrical Specifications

Description	Minimum	Typical	Maximum	Units
Frequency Range	DC		6	GHz
Impedance		50		Ohms
Dielectric Withstanding Voltage (AC)			1,000	Vrms

Mechanical Specifications

Size

Length	1.52 in [38.60 mm]
Width	1.26 in [32.00 mm]
Height	1.26 in [32.00 mm]
Weight	0.25 lbs [113.36 g]

Click the following link (or enter part number in "SEARCH" on website) to obtain additional part information including price, inventory and certifications: [7/16 DIN Female Low PIM Connector Solder Attachment 4 Hole Flange Mount for SPF-250, SPO-250, SPP-250-LLPL, 1/4" Superflexible, PE-1/4SFHC PE45990](#)



7/16 DIN Female Low PIM Connector Solder Attachment
4 Hole Flange Mount for SPF-250, SPO-250, SPP-
250-LLPL, 1/4" Superflexible, PE-1/4SFHC

RF Connectors Technical Data Sheet

PE45990

Material Specifications

Description	Material	Plating
Contact	Bronze	Silver
Insulation	PTFE	
Outer Conductor	Brass	Tri-Metal
Body	Brass	Tri-Metal

Environmental Specifications

Temperature

Operating Range -40 to +155 deg C

Compliance Certifications (see [product page](#) for current document)

Plotted and Other Data

Notes:

7/16 DIN Female Low PIM Connector Solder Attachment 4 Hole Flange Mount for SPF-250, SPO-250, SPP-250-LLPL, 1/4" Superflexible, PE-1/4SFHC from Pasternack Enterprises has same day shipment for domestic and International orders. Our RF, microwave and millimeter wave products maintain a 99.4% availability and are part of the broadest selection in the industry.

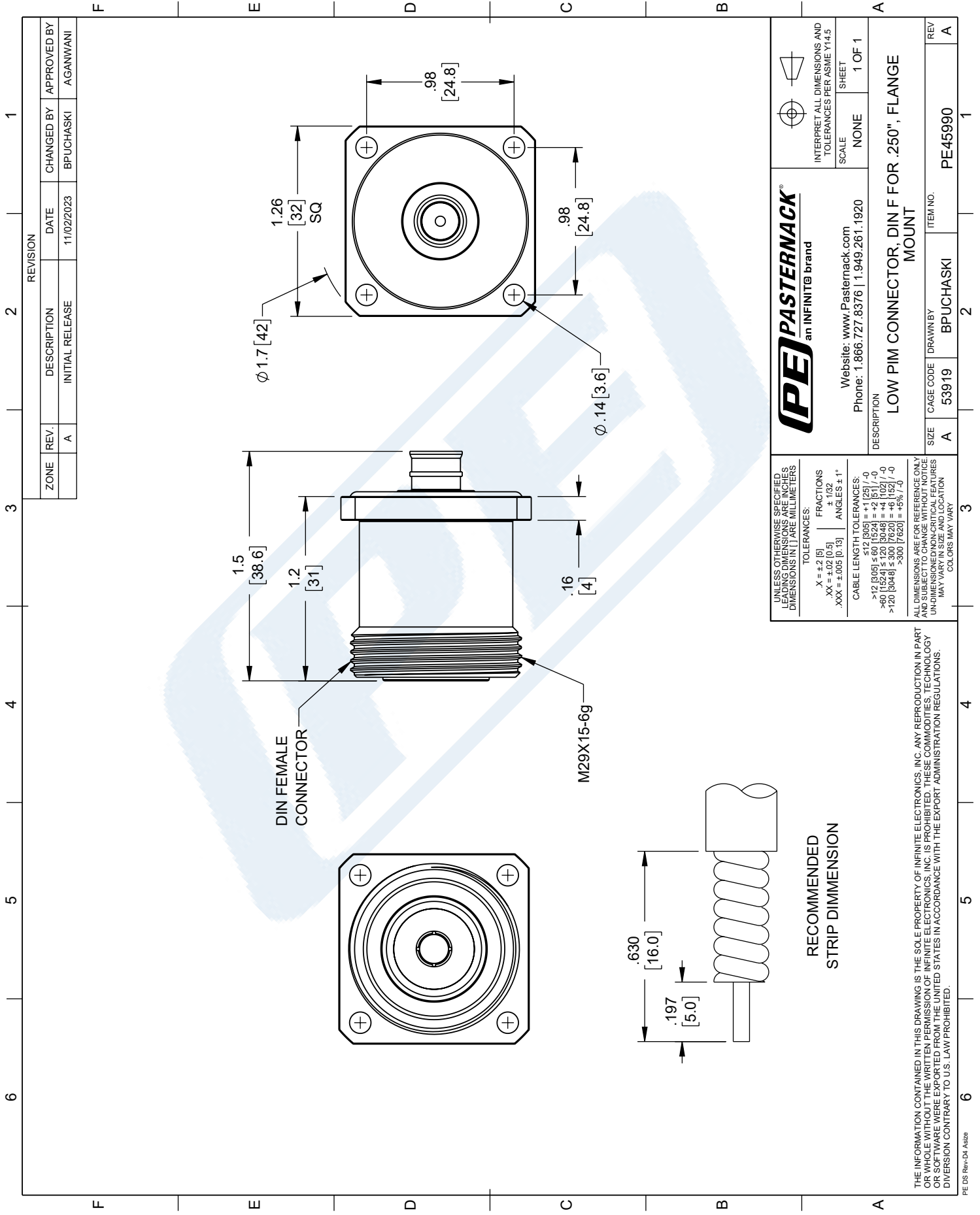
Click the following link (or enter part number in "SEARCH" on website) to obtain additional part information including price, inventory and certifications: [7/16 DIN Female Low PIM Connector Solder Attachment 4 Hole Flange Mount for SPF-250, SPO-250, SPP-250-LLPL, 1/4" Superflexible, PE-1/4SFHC PE45990](#)

URL: <https://www.pasternack.com/7-16-din-female-spf-250-spo-250-connector-pe45990-p.aspx>

The information contained in this document is accurate to the best of our knowledge and representative of the part described herein. It may be necessary to make modifications to the part and/or the documentation of the part, in order to implement improvements. Pasternack reserves the right to make such changes as required. Unless otherwise stated, all specifications are nominal. Pasternack does not make any representation or warranty regarding the suitability of the part described herein for any particular purpose, and Pasternack does not assume any liability arising out of the use of any part or documentation.

PE45990 CAD Drawing

7/16 DIN Female Low PIM Connector Solder Attachment 4 Hole Flange Mount
for SPF-250, SPO-250, SPP-250-LLPL, 1/4" Superflexible, PE-1/4SFHC



ZONE	REV.	DESCRIPTION	DATE	CHANGED BY	APPROVED BY
	A	INITIAL RELEASE	11/02/2023	BPUCHASKI	AGANWANI

PE PASTERNAK an INFINITI® brand Website: www.Pasternack.com Phone: 1.866.727.8376 1.949.261.1920		INTERPRET ALL DIMENSIONS AND TOLERANCES PER ASME Y14.5 SCALE: NONE SHEET: 1 OF 1
DESCRIPTION LOW PIM CONNECTOR, DIN F FOR .250", FLANGE MOUNT		REV A
SIZE A	CAGE CODE 53919	ITEM NO. PE45990
UNLESS OTHERWISE SPECIFIED LEADING DIMENSIONS ARE IN INCHES DIMENSIONS IN [] ARE IN MILLIMETERS TOLERANCES: .X = ±.2 [5] .XX = ±.02 [0.5] .XXX = ±.005 [0.13] FRACTIONS: ± 1/32 ANGLES: ± 1° CABLE LENGTH TOLERANCES: ≤12 [305] ≤60 [1524] = +2 [51] / -0 >60 [1524] ≤120 [3048] = +4 [102] / -0 >120 [3048] ≤300 [7620] = +6 [152] / -0 >300 [7620] = +5% / -0 ALL DIMENSIONS ARE FOR REFERENCE ONLY AND SUBJECT TO CHANGE WITHOUT NOTICE UNLESS OTHERWISE SPECIFIED. TECHNOLOGY MAY VARY IN SIZE AND LOCATION COLORS MAY VARY		THE INFORMATION CONTAINED IN THIS DRAWING IS THE SOLE PROPERTY OF INFINITE ELECTRONICS, INC. ANY REPRODUCTION IN PART OR WHOLE WITHOUT THE WRITTEN PERMISSION OF INFINITE ELECTRONICS, INC. IS PROHIBITED. THESE COMMODITIES, TECHNOLOGY OR SOFTWARE WERE EXPORTED FROM THE UNITED STATES IN ACCORDANCE WITH THE EXPORT ADMINISTRATION REGULATIONS. DIVERSION CONTRARY TO U.S. LAW PROHIBITED.