

SMA Female Bulkhead Mount Connector Crimp Attachment for LMR240, RG8X, PE-C240, TCOM-240-FR, LMR-240-UF, LMR-240-DB, TCOM-240, LMR-240-FR



PE5133

Configuration

- SMA Female Connector
- 50 Ohms
- Connector Interface Types: LMR240, RG8X, PE-C240, TCOM-240-FR, LMR-240-UF, LMR-240-DB, TCOM-240, LMR-240-FR, LMR-LW240
- Bulkhead

Features

- Max. Operating Frequency 6 GHz
- Excellent VSWR of 1.25:1
- Gold Plated Beryllium Copper Contact

Applications

- General Purpose Test
- Rack and Panel Mount Applications
- Custom Cable Assemblies

Description

Pasternack's PE5133, SMA, Connector is part of our full line of RF components available for same-day shipping. Our SMA female connector operates up to a maximum frequency of 6 GHz and offers excellent VSWR of 1.25:1. This SMA bulkhead connector allows designers to create external connections on their product enclosures, and can be used in a variety of other rack mount and panel mount applications.

Our SMA female bulkhead connector PE5133 datasheet specifications and drawing with dimensions are shown below in this PDF. Pasternack's broad catalog of RF, microwave and millimeter wave connectors allows designers to configure and customize their signal connections however they like. Whether the need is to provide an I/O for a board design, or simply create a custom cable assembly configuration, Pasternack has the right connector for the job. Pasternack can also expertly build your custom cable assemblies for you and ship same-day.

Electrical Specifications

Description	Minimum	Typical	Maximum	Units
Frequency Range	DC		6	GHz
VSWR			1.25:1	
Dielectric Withstanding Voltage (AC)			1,000	Vrms
Impedance		50		Ohms

Mechanical Specifications

Size

Length	1.04 in [26.42 mm]
Width	0.49 in [12.45 mm]
Height	0.43 in [10.92 mm]
Weight	0.012 lbs [5.44 g]

SMA Female Bulkhead Mount Connector Crimp Attachment
for LMR240, RG8X, PE-C240, TCOM-240-FR, LMR-
240-UF, LMR-240-DB, TCOM-240, LMR-240-FR



PE5133

Material Specifications

Description	Material	Plating
Contact	Beryllium Copper	Gold
Insulation	PTFE	
Body	Brass	Tri-metal
Gasket	Silicone Rubber	
Crimp Sleeve	Brass	Tri-metal

Environmental Specifications

Temperature	
Operating Range	-40 to +155 deg C

Compliance Certifications (see [product page](#) for current document)

Plotted and Other Data

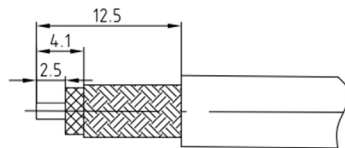
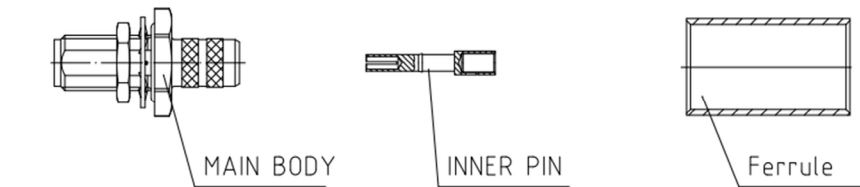
Notes:

SMA Female Bulkhead Mount Connector Crimp Attachment for LMR240, RG8X, PE-C240, TCOM-240-FR, LMR-240-UF, LMR-240-DB, TCOM-240, LMR-240-FR

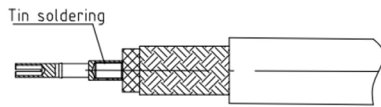


PE5133

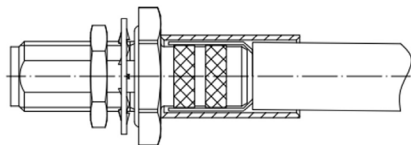
Assembly Instruction



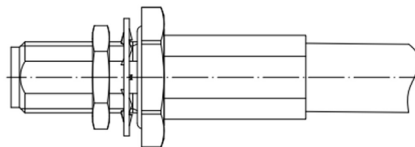
- 1.A. Stripping dimension is as shown by diagram, attention should be paid while stripping.
- B. Remove residual burr.



- 2.A. Solder inner conduct.
- B. Remove residual burr.



- 3.Put the connector in place, Then push the ferrule.



- 4.A. Compression crimping sleeve
- B. Push the heat shrink tube,blow it with heat gun.

SMA Female Bulkhead Mount Connector Crimp Attachment for LMR240, RG8X, PE-C240, TCOM-240-FR, LMR-240-UF, LMR-240-DB, TCOM-240, LMR-240-FR



PE5133

SMA Female Bulkhead Mount Connector Crimp Attachment for LMR240, RG8X, PE-C240, TCOM-240-FR, LMR-240-UF, LMR-240-DB, TCOM-240, LMR-240-FR from Pasternack Enterprises has same day shipment for domestic and International orders. Our RF, microwave and millimeter wave products maintain a 99.4% availability and are part of the broadest selection in the industry.

Click the following link (or enter part number in "SEARCH" on website) to obtain additional part information including price, inventory and certifications: [SMA Female Bulkhead Mount Connector Crimp Attachment for LMR240, RG8X, PE-C240, TCOM-240-FR, LMR-240-UF, LMR-240-DB, TCOM-240, LMR-240-FR PE5133](https://www.pasternack.com/sma-female-lmr240-rg8x-fr-lmr-240-uf-connector-pe5133-p.aspx)

URL: <https://www.pasternack.com/sma-female-lmr240-rg8x-fr-lmr-240-uf-connector-pe5133-p.aspx>

The information contained within this document is accurate to the best of our knowledge and representative of the part described herein. It may be necessary to make modifications to the part and/or the documentation of the part in order to implement improvements. Pasternack Enterprises reserves the right to make such changes as required. Unless otherwise stated, all specifications are nominal. Pasternack Enterprises does not make any representation or warranty regarding the suitability of the part described herein for any particular purpose, and Pasternack Enterprises does not assume liability arising out of the use of any part or document.

SMA Female Bulkhead Mount Connector Crimp Attachment for LMR240, RG8X, PE-C240, TCOM-240-FR, LMR-240-UF, LMR-240-DB, TCOM-240, LMR-240-FR

