

SMA Female Bulkhead Mount Commercial Grade Connector Solder Attachment Thru Hole PCB, .200 inch x .059 inch Hole Spacing

PE51717



Configuration

- SMA Female Connector
- 50 Ohms
- Straight Body Geometry
- Connector Interface Types: Thru Hole
- Bulkhead
- Commercial Grade Design

Features

- Max. Operating Frequency 18 GHz
- Gold Plated Beryllium Copper Contact

Applications

- General Purpose Test
- Rack and Panel Mount Applications
- PCB Applications

Description

Pasternack's PE51717, SMA, Commercial Grade, connector with solder attachment for Thru Hole PCB is part of our full line of RF components available for same-day shipping. Our SMA female connector operates up to a maximum frequency of 18 GHz. This SMA bulkhead connector allows designers to create external connections on their product enclosures, and can be used in a variety of other rack mount and panel mount applications.

Our SMA female bulkhead connector PE51717 datasheet specifications and drawing with dimensions are shown below in this PDF. Pasternack's broad catalog of RF, microwave and millimeter wave connectors allows designers to configure and customize their signal connections however they like. Whether the need is to provide an I/O for a board design, or simply create a custom cable assembly configuration, Pasternack has the right connector for the job. Pasternack can also expertly build your custom cable assemblies for you and ship same-day.

Electrical Specifications

Description	Minimum	Typical	Maximum	Units
Frequency Range	DC		18	GHz
Impedance		50		Ohms

Mechanical Specifications

Size

Length	0.85 in [21.59 mm]
Width	0.38 in [9.65 mm]
Height	0.38 in [9.65 mm]
Weight	0.01453 lbs [6.59 g]

Material Specifications

Description	Material	Plating
Contact	Beryllium Copper	Gold
Insulation	PTFE	
Body	Brass	Gold

SMA Female Bulkhead Mount Commercial
Grade Connector Solder Attachment Thru Hole
PCB, .200 inch x .059 inch Hole Spacing

PE51717



Environmental Specifications

Temperature

Operating Range

-55 to +155 deg C

Compliance Certifications (see [product page](#) for current document)

Plotted and Other Data

Notes:

SMA Female Bulkhead Mount Commercial Grade Connector Solder Attachment Thru Hole PCB, .200 inch x .059 inch Hole Spacing from Pasternack Enterprises has same day shipment for domestic and International orders. Our RF, microwave and millimeter wave products maintain a 99.4% availability and are part of the broadest selection in the industry.

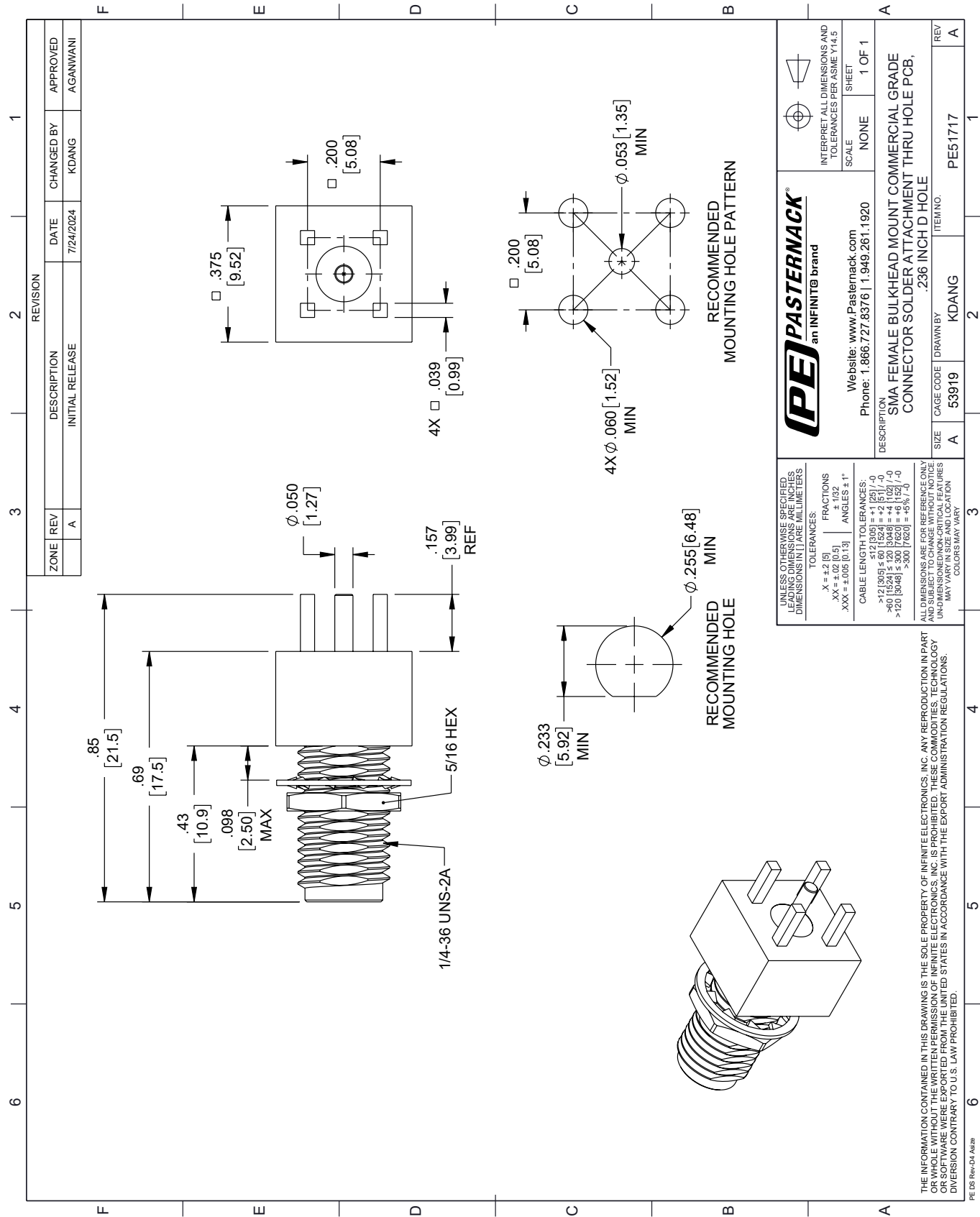
Click the following link (or enter part number in "SEARCH" on website) to obtain additional part information including price, inventory and certifications: [SMA Female Bulkhead Mount Commercial Grade Connector Solder Attachment Thru Hole PCB, .200 inch x .059 inch Hole Spacing PE51717](#)

URL: <https://www.pasternack.com/sma-female-thru-hole-pcb-connector-pe51717-p.aspx>

The information contained within this document is accurate to the best of our knowledge and representative of the part described herein. It may be necessary to make modifications to the part and/or the documentation of the part in order to implement improvements. Pasternack Enterprises reserves the right to make such changes as required. Unless otherwise stated, all specifications are nominal. Pasternack Enterprises does not make any representation or warranty regarding the suitability of the part described herein for any particular purpose, and Pasternack Enterprises does not assume liability arising out of the use of any part or document.

PE51717 CAD Drawing

SMA Female Bulkhead Mount Commercial Grade Connector Solder Attachment Thru Hole PCB, .200 inch x .059 inch Hole Spacing



PE PASTERNAK an INFINITI® brand		Website: www.Pasternack.com Phone: 1.866.727.8376 1.949.261.1920		INTERPRET ALL DIMENSIONS AND TOLERANCES PER ASME Y14.5	
UNLESS OTHERWISE SPECIFIED, LEADING DIMENSIONS ARE IN INCHES, DIMENSIONS IN [] ARE MILLIMETERS		TOLERANCES:		SCALE	
X = ±.2 [5]		FRACTIONS		NONE	
.XX = ±.02 [0.5]		± 1/32		SHEET	
.XXX = ±.005 [0.13]		ANGLES ± 1°		1 OF 1	
CABLE LENGTH TOLERANCES:		DESCRIPTION		SMA FEMALE BULKHEAD MOUNT COMMERCIAL GRADE CONNECTOR SOLDER ATTACHMENT THRU HOLE PCB, .236 INCH D HOLE	
>12 [305] ≤ 60 [1524] = ±.125 [-0]		SIZE		A	
>60 [1524] ≤ 120 [3048] = ±.102 [-0]		CAGE CODE		53919	
>120 [3048] ≤ 180 [4572] = ±.075 [-0]		DRAWN BY		KDANG	
>180 [4572] ≤ 300 [7620] = ±.05 [-0]		ITEM NO.		PE51717	
ALL DIMENSIONS ARE FOR REFERENCE ONLY. UNDIMENSIONED/NC-CRITICAL FEATURES MAY VARY IN SIZE AND LOCATION. COLORS MAY VARY.		REV		A	

THE INFORMATION CONTAINED IN THIS DRAWING IS THE SOLE PROPERTY OF INFINITE ELECTRONICS, INC. ANY REPRODUCTION IN PART OR WHOLE WITHOUT THE WRITTEN PERMISSION OF INFINITE ELECTRONICS, INC. IS PROHIBITED. THESE COMMODITIES, TECHNOLOGY OR SOFTWARE WERE EXPORTED FROM THE UNITED STATES IN ACCORDANCE WITH THE EXPORT ADMINISTRATION REGULATIONS. DIVISION CONTRARY TO U.S. LAW PROHIBITED.

PE 05 Rev-D4 Addn