



5 Watt RF Load Up to 12.4 GHz With SMA
Male Input Anodized Aluminum Body

RF Terminations Technical Data Sheet

PE6TR1130

Features

- DC to 12.4GHz Frequency Range
- 50 Ohm Impedance
- SMA Male Coaxial Interface
- Max VSWR 1.3:1
- Max Power 5 Watts (CW)

Applications

- WIFI 6E
- 5G Cellular Bands
- SatCom
- Radar Systems
- Test and Measurement
- Commercial and Military
- Communication

Description

Pasternack's PE6TR1130 is an RF termination (also called RF load or dummy load) that operates from DC to 12.4 GHz and handles up to 5 Watt (CW). Our SMA termination / load has a male gender. PE6TR1130 SMA load termination offers 1.3:1 max VSWR.

RF load / terminations are indispensable components in many RF, microwave and millimeter wave systems where signal reflection from unused ports can potentially damage the device or reduce the signal integrity. By using a terminator on an unused port with a matched load (dummy load), the incident energy will be absorbed with minimal reflection. These termination components are commonly used to terminate devices such as couplers, circulators, and switches. They are also widely used in measurement systems to ensure accurate results. Pasternack offers a huge selection of RF, microwave and millimeter wave terminations up to 65 GHz with excellent performance over the entire operating range and power handling capabilities up to 800 Watt (CW).

Electrical Specifications

Description	Minimum	Typical	Maximum	Units
Frequency Range	DC		12.4	GHz
Impedance		50		Ohms
VSWR			1.3:1	
Input Power (CW) Derated linearly to 0.5W at 125°C			5	Watts
Input Power (Peak) 5 μ s pulse, 1% Duty Cycle			500	Watts

Mechanical Specifications

Size	
Length	1.03 in [26.16 mm]
Width	0.62 in [15.75 mm]
Height	0.62 in [15.75 mm]
Weight	0.02 lbs [9.07 g]

Click the following link (or enter part number in "SEARCH" on website) to obtain additional part information including price, inventory and certifications: [5 Watt RF Load \(Termination\) Up to 12.4 GHz With SMA Male Input Black Anodized Aluminum Body PE6TR1130](#)



5 Watt RF Load Up to 12.4 GHz With SMA
Male Input Anodized Aluminum Body

RF Terminations Technical Data Sheet

PE6TR1130

Configuration

Connector
Termination Design

SMA Male
RF Load

Material Specifications

Description	Material	Plating
Connector 1 Contact	Brass	Gold
Body	Black Anodized Aluminum	
Coupling Nut	Brass	Nickel
Housing	Black Anodized Aluminum	

Environmental Specifications

Temperature

Operating Range

-55 to +125 deg C

Compliance Certifications (see [product page](#) for current document)

Plotted and Other Data

Notes:

5 Watt RF Load Up to 12.4 GHz With SMA Male Input Anodized Aluminum Body from Pasternack Enterprises has same day shipment for domestic and International orders. Our RF, microwave and millimeter wave products maintain a 99.4% availability and are part of the broadest selection in the industry.

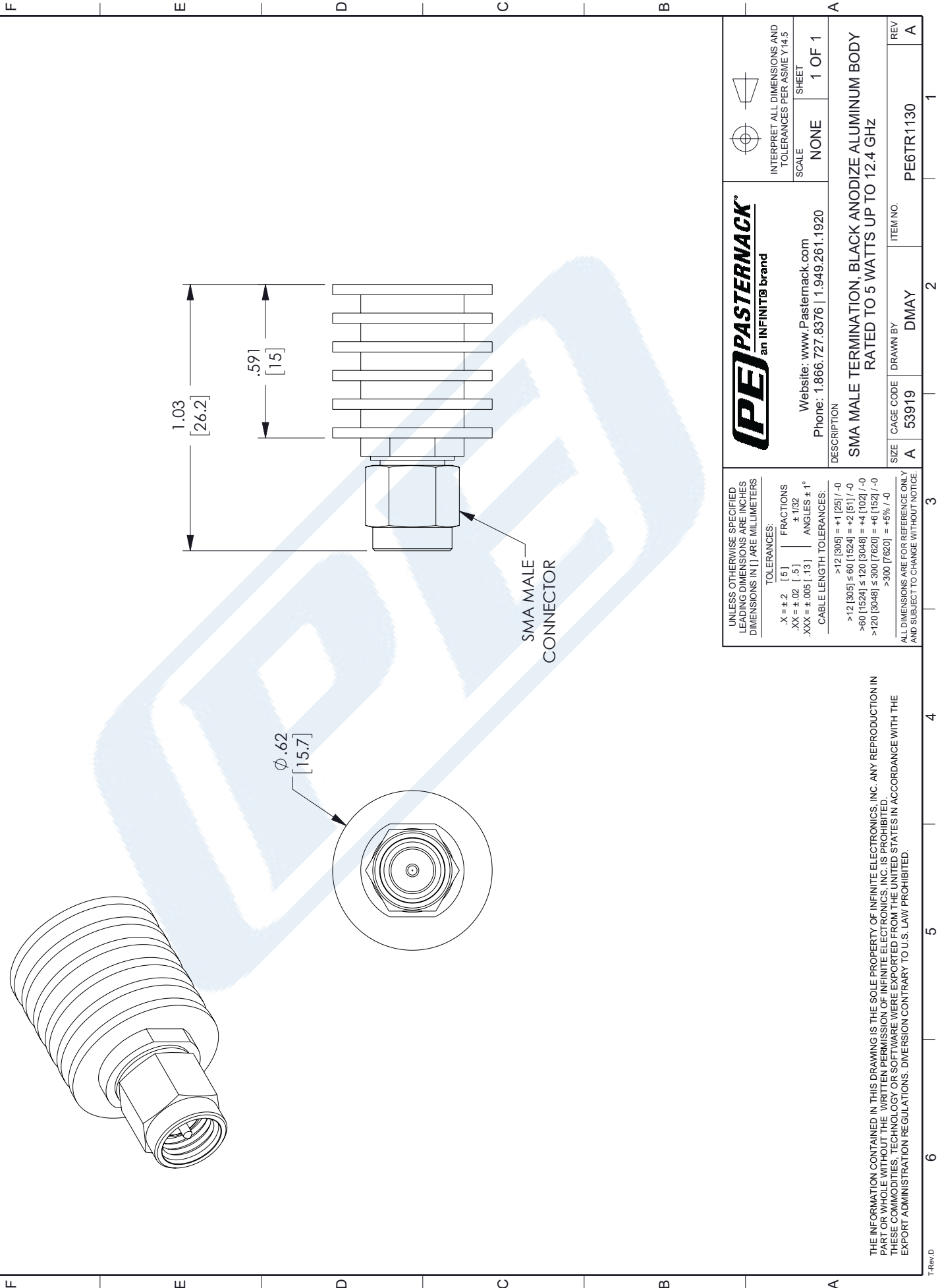
Click the following link (or enter part number in "SEARCH" on website) to obtain additional part information including price, inventory and certifications: [5 Watt RF Load \(Termination\) Up to 12.4 GHz With SMA Male Input Black Anodized Aluminum Body PE6TR1130](#)

URL: <https://www.pasternack.com/5-watts-sma-male-rf-load-12.4-ghz-pe6tr1130-p.aspx>

The information contained in this document is accurate to the best of our knowledge and representative of the part described herein. It may be necessary to make modifications to the part and/or the documentation of the part, in order to implement improvements. Pasternack reserves the right to make such changes as required. Unless otherwise stated, all specifications are nominal. Pasternack does not make any representation or warranty regarding the suitability of the part described herein for any particular purpose, and Pasternack does not assume any liability arising out of the use of any part or documentation.

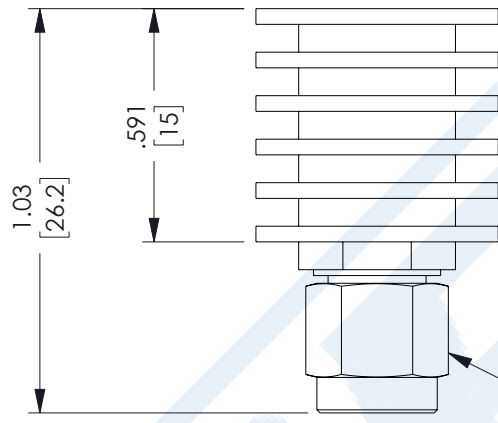
PE6TR1130 CAD Drawing

5 Watt RF Load Up to 12.4 GHz With SMA Male Input Anodized Aluminum Body



SMA MALE
CONNECTOR

$\phi .62$
[15.7]



UNLESS OTHERWISE SPECIFIED
LEADING DIMENSIONS ARE INCHES
DIMENSIONS IN [] ARE MILLIMETERS

TOLERANCES:

X = ± 2	[5]	FRACTIONS
.XX = ± .02	[.5]	± 1/32
.XXX = ± .005	[.13]	ANGLES ± 1°

CABLE LENGTH TOLERANCES:

>12 [305]	± .125 / -0
>12 [305] ≤ 60 [1524]	± .25 / -0
>60 [1524] ≤ 120 [3048]	± .5 / -0
>120 [3048] ≤ 300 [7620]	± 1.0 / -0
>300 [7620]	± 2.0 / -0

ALL DIMENSIONS ARE FOR REFERENCE ONLY
AND SUBJECT TO CHANGE WITHOUT NOTICE.



Website: www.Pasternack.com
Phone: 1.866.727.8376 | 1.949.261.1920

DESCRIPTION

SMA MALE TERMINATION, BLACK ANODIZE ALUMINUM BODY
RATED TO 5 WATTS UP TO 12.4 GHz

INTERPRET ALL DIMENSIONS AND
TOLERANCES PER ASME Y14.5

SCALE
NONE

SHEET
1 OF 1

THE INFORMATION CONTAINED IN THIS DRAWING IS THE SOLE PROPERTY OF INFINITE ELECTRONICS, INC. ANY REPRODUCTION IN
PART OR WHOLE WITHOUT THE WRITTEN PERMISSION OF INFINITE ELECTRONICS, INC. IS PROHIBITED.
THESE COMMODITIES, TECHNOLOGY OR SOFTWARE WERE EXPORTED FROM THE UNITED STATES IN ACCORDANCE WITH THE
EXPORT ADMINISTRATION REGULATIONS. DIVERSION CONTRARY TO U.S. LAW PROHIBITED.

T-Rev D