



10 Watt RF Load Up to 12.4 GHz With SMA  
Male Input Anodized Aluminum Body

## RF Terminations Technical Data Sheet

**PE6TR1136**

### Features

- DC to 12.4GHz Frequency Range
- 50 Ohm Impedance
- SMA Male Coaxial Interface
- Max VSWR 1.3:1
- Max Power 10 Watts (CW)

### Applications

- WIFI 6E
- 5G Cellular Bands
- SatCom
- Radar Systems
- Test and Measurement
- Commercial and Military
- Communication

### Description

Pasternack's PE6TR1136 is an RF termination (also called RF load or dummy load) that operates from DC to 12.4 GHz and handles up to 10 Watt (CW). Our SMA termination / load has a male gender. PE6TR1136 SMA load termination offers 1.3:1 max VSWR.

RF load / terminations are indispensable components in many RF, microwave and millimeter wave systems where signal reflection from unused ports can potentially damage the device or reduce the signal integrity. By using a terminator on an unused port with a matched load (dummy load), the incident energy will be absorbed with minimal reflection. These termination components are commonly used to terminate devices such as couplers, circulators, and switches. They are also widely used in measurement systems to ensure accurate results. Pasternack offers a huge selection of RF, microwave and millimeter wave terminations up to 65 GHz with excellent performance over the entire operating range and power handling capabilities up to 800 Watt (CW).

### Electrical Specifications

Description	Minimum	Typical	Maximum	Units
Frequency Range	DC		12.4	GHz
Impedance		50		Ohms
VSWR			1.3:1	
Input Power (CW) Derated linearly to 1W at 125°C			10	Watts
Input Power (Peak) 5 $\mu$ s pulse, 2% Duty Cycle			500	Watts

### Mechanical Specifications

<b>Size</b>	
Length	1.56 in [39.62 mm]
Width	0.65 in [16.51 mm]
Height	0.65 in [16.51 mm]
Weight	0.02 lbs [9.07 g]

Click the following link (or enter part number in "SEARCH" on website) to obtain additional part information including price, inventory and certifications: [10 Watt RF Load \(Termination\) Up to 12.4 GHz With SMA Male Input Black Anodized Aluminum Body PE6TR1136](#)



10 Watt RF Load Up to 12.4 GHz With SMA  
Male Input Anodized Aluminum Body

**RF Terminations Technical Data Sheet**

**PE6TR1136**

**Configuration**

Connector  
Termination Design

SMA Male  
RF Load

**Material Specifications**

Description	Material	Plating
Connector 1 Contact	Brass	Gold
Body	Black Anodized Aluminum	
Coupling Nut	Brass	Nickel
Housing	Black Anodized Aluminum	

**Environmental Specifications**

**Temperature**

Operating Range

-55 to +125 deg C

**Compliance Certifications** (see [product page](#) for current document)

**Plotted and Other Data**

Notes:

10 Watt RF Load Up to 12.4 GHz With SMA Male Input Anodized Aluminum Body from Pasternack Enterprises has same day shipment for domestic and International orders. Our RF, microwave and millimeter wave products maintain a 99.4% availability and are part of the broadest selection in the industry.

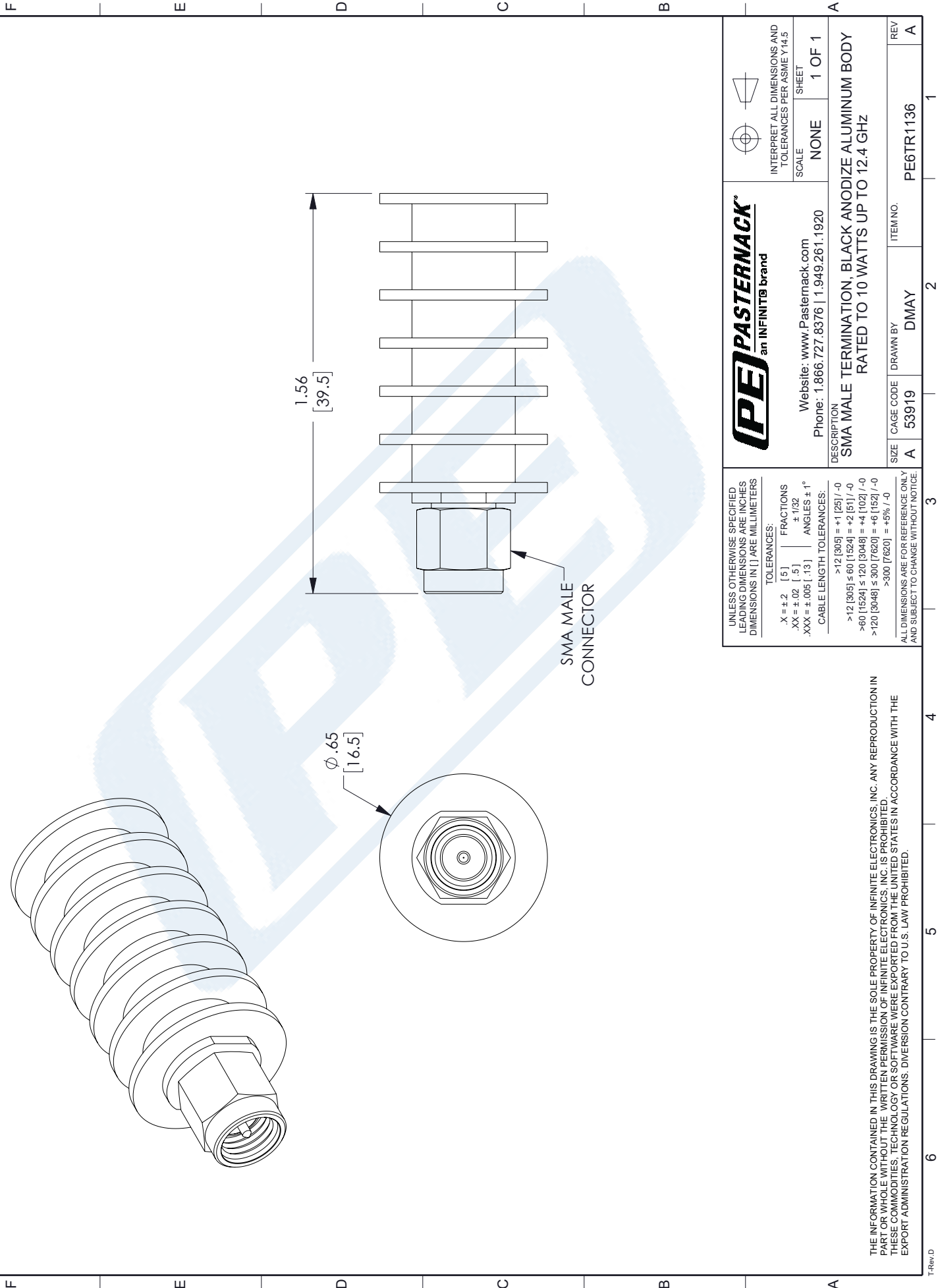
Click the following link (or enter part number in "SEARCH" on website) to obtain additional part information including price, inventory and certifications: [10 Watt RF Load \(Termination\) Up to 12.4 GHz With SMA Male Input Black Anodized Aluminum Body PE6TR1136](#)

URL: <https://www.pasternack.com/10-watts-sma-male-rf-load-12.4-ghz-pe6tr1136-p.aspx>

The information contained in this document is accurate to the best of our knowledge and representative of the part described herein. It may be necessary to make modifications to the part and/or the documentation of the part, in order to implement improvements. Pasternack reserves the right to make such changes as required. Unless otherwise stated, all specifications are nominal. Pasternack does not make any representation or warranty regarding the suitability of the part described herein for any particular purpose, and Pasternack does not assume any liability arising out of the use of any part or documentation.

# PE6TR1136 CAD Drawing

10 Watt RF Load Up to 12.4 GHz With SMA Male Input Anodized Aluminum Body



ZONE		REV.		DESCRIPTION		DATE		CHANGED BY		APPROVED BY	
A		A		INITIAL RELEASE		01/27/2023		DMAY		SPONG	

UNLESS OTHERWISE SPECIFIED LEADING DIMENSIONS ARE INCHES DIMENSIONS IN [ ] ARE MILLIMETERS		TOLERANCES:		FRACTIONS		ANGLES ± 1°		CABLE LENGTH TOLERANCES:	
.X = ± .2		[ .5 ]		± 1/32		± 1/32		>12 [305] = ±1 [25] / -0	
.XX = ± .02		[ .5 ]		± 1/32		± 1/32		>60 [1524] ≤ 120 [3048] = ±4 [102] / -0	
.XXX = ± .005		[ .13 ]		± 1/32		± 1/32		>120 [3048] ≤ 300 [7620] = ±6 [152] / -0	
								>300 [7620] = ±5% / -0	

ALL DIMENSIONS ARE FOR REFERENCE ONLY AND SUBJECT TO CHANGE WITHOUT NOTICE.		ITEM NO.		DRAWN BY		CAGE CODE		SIZE	
PE6TR1136		DMAY		53919		A		A	



Website: [www.Pasternack.com](http://www.Pasternack.com)  
Phone: 1.866.727.8376 | 1.949.261.1920

DESCRIPTION  
SMA MALE TERMINATION, BLACK ANODIZE ALUMINUM BODY  
RATED TO 10 WATTS UP TO 12.4 GHz



INTERPRET ALL DIMENSIONS AND TOLERANCES PER ASME Y14.5

SCALE NONE SHEET 1 OF 1

THE INFORMATION CONTAINED IN THIS DRAWING IS THE SOLE PROPERTY OF INFINITE ELECTRONICS, INC. ANY REPRODUCTION IN PART OR WHOLE WITHOUT THE WRITTEN PERMISSION OF INFINITE ELECTRONICS, INC. IS PROHIBITED. THESE COMMODITIES, TECHNOLOGY OR SOFTWARE WERE EXPORTED FROM THE UNITED STATES IN ACCORDANCE WITH THE EXPORT ADMINISTRATION REGULATIONS. DIVERSION CONTRARY TO U.S. LAW PROHIBITED.