

1.35mm Female to 1.35mm Female Adapter, Engineering Grade

PE910009



Configuration

- 1.35mm Female Connector 1
- 1.35mm Female Connector 2
- 50 Ohms Impedance
- Engineering Grade Design
- Straight Body Geometry

Features

- Max VSWR of 1.4:1 up to 90 GHz
- Gold Plated Beryllium Copper Contact

Applications

- General Purpose Test

Description

The engineering grade 1.35mm adapter PE910009 is part of our full line of available RF, microwave, and millimeter wave components from Pasternack. Our radio frequency adapter comes with a 50 Ohm impedance and a maximum VSWR of 1.4:1. This RF adapter has a female to female gender configuration, which provides easier connections in tighter spaces. The 1.35mm to 1.35mm adapter is an engineering grade adapter designed for repeated use in prototyping and lab applications for RF and microwave systems without performance degradation. Our 1.35mm to 1.35mm adapter is precision manufactured to RF component industry specifications and has a maximum frequency of 90 GHz. This engineering grade in-series RF adapter has a dielectric withstanding voltage of 500 Vrms.

This 1.35mm female to 1.35mm female adapter is one of the many RF components that ship the same business day as they are ordered. The PE910009 female 1.35mm to female 1.35mm adapter has a straight body. This Pasternack 1.35mm to 1.35mm coax adapter is an in-line RF adapter in an engineering grade design. Our RF adapter is often used to enable connections between two connector types that would otherwise not mate. Our adapter has a maximum insertion loss of 0.758 dB. This engineering grade RF adapter has a 0.263-inch length, 0.263-inch width, and 0.009 lbs weight.

The PE910009 adapter from Pasternack is made from a passivated stainless steel connector body and has a beryllium copper center contact. Our 1.35mm female to 1.35mm female radio frequency adapter can also be used to protect connectors on expensive equipment where the number of connect/disconnect cycles is high. This engineering grade RF adapter has an operating temperature range of -65 to 165 degrees C. Additional dimensions and specifications for this in-series adapter are on our downloadable PDF datasheet above.

Pasternack has one of the largest in-stock selections of 1.35mm to 1.35mm radio frequency engineering grade adapters for international and domestic orders, including custom cable assemblies. Make your online purchase right now to take advantage of our same-business-day shipping. For further information on similar products, our expert technical support and knowledgeable sales team can help you get the high-quality 90 GHz RF adapter that meets your requirements.

Electrical Specifications

Description	Minimum	Typical	Maximum	Units
Frequency Range	DC		90	GHz
Impedance		50		Ohms
VSWR			1.4:1	
Insertion Loss			0.758	dB
Operating Voltage (AC)			350	Vrms
Dielectric Withstanding Voltage (AC)			500	Vrms

1.35mm Female to 1.35mm Female Adapter, Engineering Grade

PE910009



Electrical Specifications

Description	Minimum	Typical	Maximum	Units
Insulation Resistance	5,000			MOhms

Electrical Specification Notes:
Insertion loss is $\approx .08 \times \sqrt{\text{FGHz}}$ dB

Mechanical Specifications

Size

Length	0.26 in [6.68 mm]
Width	0.26 in [6.68 mm]
Height	0.81 in [20.60 mm]
Weight	0.01 lbs [4.54 g]

Description	Connector 1	Connector 2
Polarity	Standard	Standard
Mating Cycles, Min	1,000	1,000

Material Specifications

Description	Connector 1		Connector 2	
	Material	Plating	Material	Plating
Type	1.35mm Female		1.35mm Female	
Contact	Beryllium Copper	Gold	Beryllium Copper	Gold
Insulation	PEI		PEI	
Outer Conductor	Passivated Stainless Steel		Passivated Stainless Steel	
Body	Passivated Stainless Steel		Passivated Stainless Steel	

Environmental Specifications

Temperature

Operating Range	-65 to +165 °C
Shock	Per MIL-STD-202, Method 213, Test Condition I
Vibration	Per MIL-STD-202, Method 204, Test Condition D
Salt Spray	Per MIL-STD-202, Method 101, Test Condition B, Solution 5%

1.35mm Female to 1.35mm Female Adapter, Engineering Grade

PE910009



Compliance Certifications (see [product page](#) for current document)

Plotted and Other Data

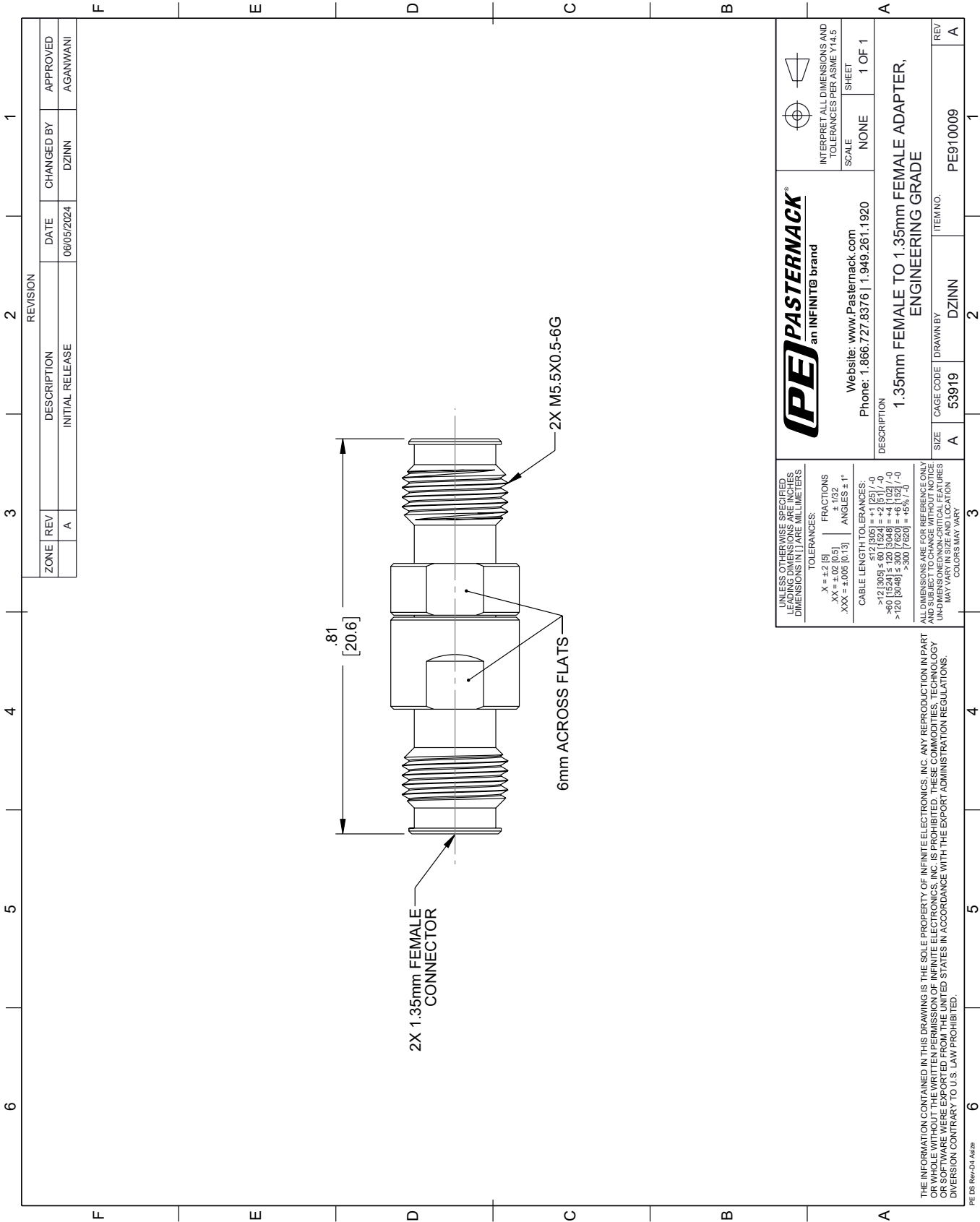
1.35mm Female to 1.35mm Female Adapter, Engineering Grade from Pasternack Enterprises has same day shipment for domestic and International orders. Our RF, microwave and millimeter wave products maintain a 99.4% availability and are part of the broadest selection in the industry.


Click the following link (or enter part number in "SEARCH" on website) to obtain additional part information including price, inventory and certifications: [1.35mm Female to 1.35mm Female Adapter, Engineering Grade PE910009](#)

URL: <https://www.pasternack.com/1.35mm-female-to-1.35mm-female-adapter-pe910009-p.aspx>

The information contained within this document is accurate to the best of our knowledge and representative of the part described herein. It may be necessary to make modifications to the part and/or the documentation of the part in order to implement improvements. Pasternack Enterprises reserves the right to make such changes as required. Unless otherwise stated, all specifications are nominal. Pasternack Enterprises does not make any representation or warranty regarding the suitability of the part described herein for any particular purpose, and Pasternack Enterprises does not assume liability arising out of the use of any part or document.

PE910009 CAD Drawing
1.35mm Female to 1.35mm Female Adapter, Engineering Grade



UNLESS OTHERWISE SPECIFIED, LEADING DIMENSIONS ARE IN INCHES. DIMENSIONS IN [] ARE MILLIMETERS.		PE PASTERNAK® an INFINITO® brand		INTERPRET ALL DIMENSIONS AND TOLERANCES PER ASME Y14.5			
		TOLERANCES: X = ±.2 [5] XX = ±.02 [0.5] XXX = ±.005 [0.13]		FRACTIONS ± 1/32 ANGLES ± 1°		SCALE NONE	
CABLE LENGTH TOLERANCES: ≤12 [305] ≤ 60 [1524] = +.1 [25] / -0 >60 [1524] ≤ 120 [3048] = +.4 [102] / -0 >120 [3048] ≤ 300 [7620] = +.5 [12.7] / -0 >300 [7620] = +.5 [12.7] / -0		Website: www.Pasternack.com Phone: 1.866.727.8376 1.949.261.1920		SHEET 1 OF 1		DESCRIPTION 1.35mm FEMALE TO 1.35mm FEMALE ADAPTER, ENGINEERING GRADE	
ALL DIMENSIONS ARE FOR REFERENCE ONLY AND SUBJECT TO CHANGE WITHOUT NOTICE. UNLESS OTHERWISE SPECIFIED, DIMENSIONS MAY VARY IN SIZE AND LOCATION. COLORS MAY VARY.		ITEM NO. PE910009		REV A			
SIZE A		CAGE CODE 53919		DRAWN BY DZINN		ITEM NO. PE910009	