

Precision SMA Female to SMP Male 2 Hole Flange Mount Adapter, Smooth Bore .450 inch Mounting Hole Spacing



PE91057

Configuration

- SMA Female Connector 1
- SMP Male Connector 2
- 50 Ohms Impedance
- Precision Design
- Straight Body Geometry
- 2 Hole Flange Mount Method

Features

- Max VSWR of 1.2:1 up to 26.5 GHz
- SMA interface compliant with MIL-STD-348
- SMP interface compliant with DESC94007
- Contact plating according to MIL-G-45204, Type I, Grade 1, Class A
- Gold Plated Beryllium Copper Contact

Applications

- Allows Connection Between Series
- General Purpose Test
- Rack Mounted Equipment
- Precision Test & Measurement

Description

Pasternack's PE91057 SMA female to SMP male 2 hole flange adapter is part of our full line of RF components available for same-day shipping. The SMA connector mates mechanically with commercially available 3.5mm and 2.92mm (K) connectors. Our SMA to SMP adapter has a female to male gender configuration built of durable stainless steel in a precision design. PE91057 SMA female to SMP male adapter operates to 26.5 GHz. The Pasternack RF adapter provides excellent VSWR of 1.2:1 maximum. This RF SMA to SMP 2 hole flange adapter allows designers to create external connections on their product enclosures, and can be used in a variety of other rack mount and panel mount applications.

RF adapters are often used to enable connections between two connector types that would otherwise not mate. Certain adapter configurations can also be used to protect connectors on expensive equipment where the number of connect/disconnect cycles is high. An RF, microwave or millimeter wave adapter is connected to the equipment, and the commonly changed connection is made with the adapter which can be easily replaced when it wears out after high usage; such adapters are referred to as connector savers. Pasternack also offers bulkhead, panel mount, hermetically sealed, reverse polarity, and isolated ground adapter varieties to serve all of your RF, microwave and millimeter wave needs.

Electrical Specifications

Description	Minimum	Typical	Maximum	Units
Frequency Range	DC		26.5	GHz
Impedance		50		Ohms
VSWR			1.2:1	

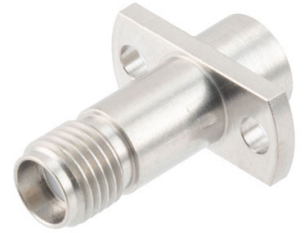
Mechanical Specifications

Size

Length	0.78 in [19.81 mm]
Width	0.63 in [15.88 mm]
Height	0.28 in [7.14 mm]
Weight	0.01 lbs [5.90 g]

Description	Connector 1	Connector 2
Polarity	Standard	Standard
Interface Specification	MIL-STD-348	DESC94007

Precision SMA Female to SMP Male 2 Hole Flange Mount Adapter, Smooth Bore .450 inch Mounting Hole Spacing



PE91057

Description	Connector 1	Connector 2
Mating Cycles, Min	1,000	1,000

Material Specifications

Description	Connector 1		Connector 2	
	Material	Plating	Material	Plating
Type	SMA Female		SMP Male	
Contact	Beryllium Copper	Gold MIL-G-45204, Type I, Grade 1, Class A	Beryllium Copper	Gold MIL-G-45204, Type I, Grade 1, Class A
Insulation	PTFE		PTFE	
Body	Passivated Stainless Steel	AMS-QQ-P-35	Passivated Stainless Steel	AMS-QQ-P-35

Environmental Specifications

Temperature

Operating Range -55 to +125 °C

Compliance Certifications (see [product page](#) for current document)

Plotted and Other Data

Precision SMA Female to SMP Male 2 Hole Flange Mount Adapter, Smooth Bore .450 inch Mounting Hole Spacing from Pasternack Enterprises has same day shipment for domestic and International orders. Our RF, microwave and millimeter wave products maintain a 99.4% availability and are part of the broadest selection in the industry.

Click the following link (or enter part number in "SEARCH" on website) to obtain additional part information including price, inventory and certifications: [Precision SMA Female to SMP Male 2 Hole Flange Mount Adapter, Smooth Bore .450 inch Mounting Hole Spacing PE91057](#)

URL: <https://www.pasternack.com/sma-female-smp-male-straight-adapter-pe91057-p.aspx>

The information contained within this document is accurate to the best of our knowledge and representative of the part described herein. It may be necessary to make modifications to the part and/or the documentation of the part in order to implement improvements. Pasternack Enterprises reserves the right to make such changes as required. Unless otherwise stated, all specifications are nominal. Pasternack Enterprises does not make any representation or warranty regarding the suitability of the part described herein for any particular purpose, and Pasternack Enterprises does not assume liability arising out of the use of any part or document.

PE91057 CAD Drawing

Precision SMA Female to SMP Male 2 Hole Flange Mount Adapter, Smooth Bore .450 inch Mounting Hole Spacing

