

4 Hole Flange Mount RP-SMA Female to RP-SMA Female Adapter



PE91269

Configuration

- SMA Female Reverse Polarity Connector 1
- SMA Female Reverse Polarity Connector 2
- 50 Ohms Impedance
- Straight Body Geometry
- 4 Hole Flange Mount Method

Features

- Max VSWR of 1.2:1 up to 18 GHz
- SMA interface compliant with MIL-STD-348
- Epoxy captivation
- Contact plating according to MIL-G-45204

Applications

- General Purpose Test
- Rack Mounted Equipment

Description

Pasternack's PE91269 4 hole flange RP SMA female to RP SMA female adapter is part of our full line of RF components available for same-day shipping. Our reverse polarity SMA to reverse polarity SMA adapter has a female to female gender configuration built of durable stainless steel. PE91269 reverse polarity SMA female to reverse polarity SMA female adapter operates to 18 GHz. The Pasternack RF adapter provides excellent VSWR of 1.2:1 maximum. This RF SMA 4 hole flange to SMA adapter allows designers to create external connections on their product enclosures, and can be used in a variety of other rack mount and panel mount applications.

RF adapters are often used to enable connections between two connector types that would otherwise not mate. Certain adapter configurations can also be used to protect connectors on expensive equipment where the number of connect/disconnect cycles is high. An RF, microwave or millimeter wave adapter is connected to the equipment, and the commonly changed connection is made with the adapter which can be easily replaced when it wears out after high usage; such adapters are referred to as connector savers. Pasternack also offers bulkhead, panel mount, hermetically sealed, reverse polarity, and isolated ground adapter varieties to serve all of your RF, microwave and millimeter wave needs.

Electrical Specifications

Description	Minimum	Typical	Maximum	Units
Frequency Range	DC		18	GHz
Impedance		50		Ohms
VSWR			1.2:1	
Operating Voltage (AC)			335	Vrms
Dielectric Withstanding Voltage (AC)			1,500	Vrms
Insulation Resistance	5,000			MOhms

Electrical Specification Notes:
Values at 25°C, sea level.

Mechanical Specifications

Size

Length	0.88 in [22.23 mm]
Width	0.50 in [12.70 mm]
Height	0.50 in [12.70 mm]
Weight	0.04 lbs [15.88 g]

4 Hole Flange Mount RP-SMA Female to RP-SMA Female Adapter



PE91269

Description	Connector 1	Connector 2
Polarity	Reverse Polarity	Reverse Polarity
Interface Specification	MIL-STD-348	MIL-STD-348
Contact Captivation Method	Epoxy	Epoxy

Material Specifications

Description	Connector 1		Connector 2	
	Material	Plating	Material	Plating
Type	SMA Female Reverse Polarity		SMA Female Reverse Polarity	
Contact	Brass	Gold over Nickel MIL-G-45204	Beryllium Copper	Gold over Nickel MIL-G-45204
Insulation	PTFE		PTFE	
Outer Conductor	Passivated Stainless Steel	QQ-P-35	Passivated Stainless Steel	QQ-P-35
Body	Passivated Stainless Steel	QQ-P-35	Passivated Stainless Steel	QQ-P-35

Environmental Specifications

Temperature

Operating Range -65 to +165 °C

Compliance Certifications (see [product page](#) for current document)

Plotted and Other Data

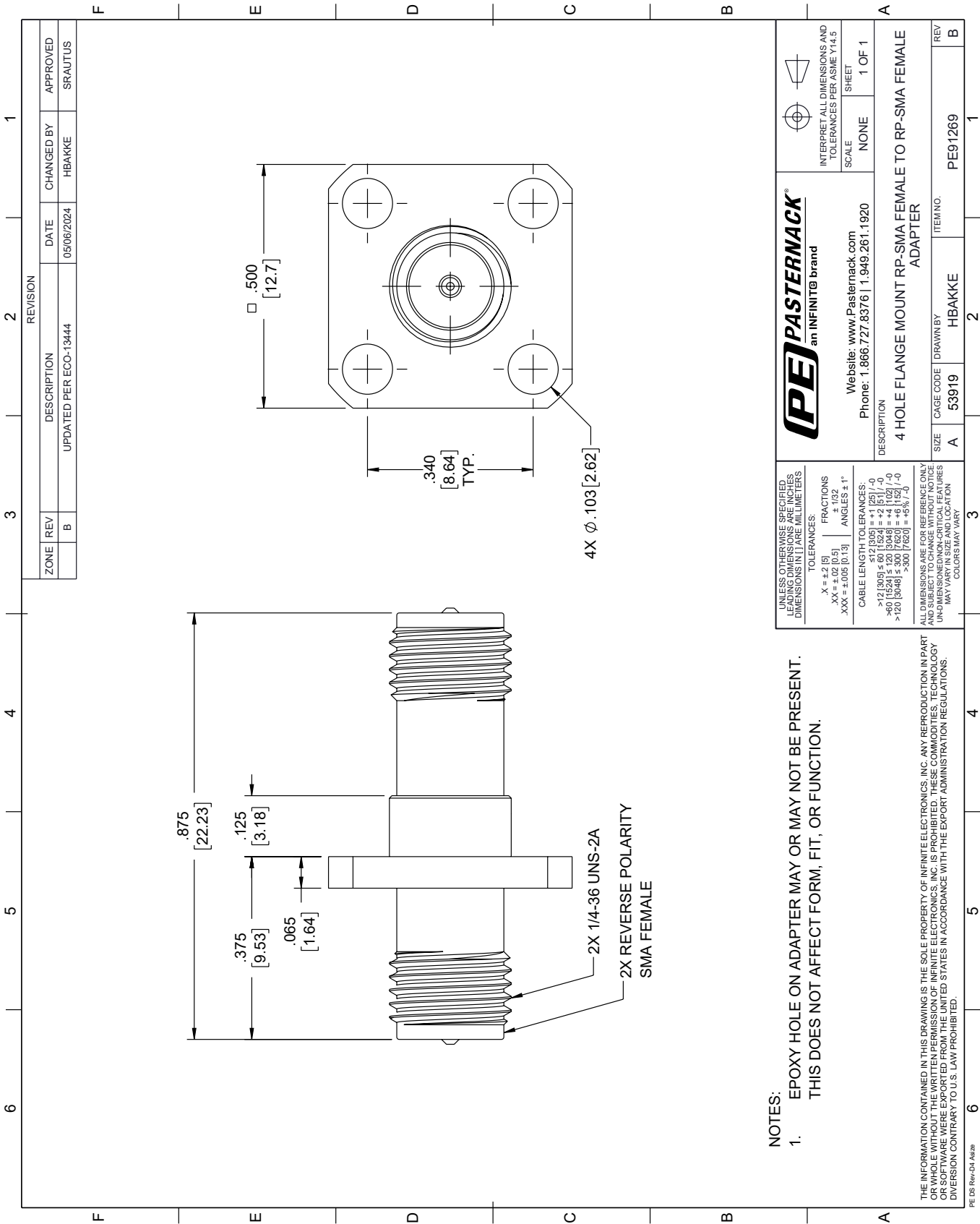
4 Hole Flange Mount RP-SMA Female to RP-SMA Female Adapter from Pasternack Enterprises has same day shipment for domestic and International orders. Our RF, microwave and millimeter wave products maintain a 99.4% availability and are part of the broadest selection in the industry.

Click the following link (or enter part number in "SEARCH" on website) to obtain additional part information including price, inventory and certifications: [4 Hole Flange Mount RP-SMA Female to RP-SMA Female Adapter PE91269](#)

URL: <https://www.pasternack.com/sma-female-sma-female-straight-adapter-pe91269-p.aspx>

The information contained within this document is accurate to the best of our knowledge and representative of the part described herein. It may be necessary to make modifications to the part and/or the documentation of the part in order to implement improvements. Pasternack Enterprises reserves the right to make such changes as required. Unless otherwise stated, all specifications are nominal. Pasternack Enterprises does not make any representation or warranty regarding the suitability of the part described herein for any particular purpose, and Pasternack Enterprises does not assume liability arising out of the use of any part or document.

PE91269 CAD Drawing
4 Hole Flange Mount RP-SMA Female to RP-SMA Female Adapter



- NOTES:
- EPOXY HOLE ON ADAPTER MAY OR MAY NOT BE PRESENT. THIS DOES NOT AFFECT FORM, FIT, OR FUNCTION.