



Hermetically Sealed Snap-On QMA Female to QMA Female Snap-On Adapter

RF Adapters Technical Data Sheet

PE91343

Configuration

- Snap-On QMA Female Connector 1
- Snap-On QMA Female Connector 2
- 50 Ohms
- Straight Body Geometry

Features

- Max VSWR of 1.08:1 up to 6 GHz
- Hermetically Sealed
- 51μ in. minimum contact plating
- Gold Plated Beryllium Copper Contact

Applications

- General Purpose Test
- Vacuum Test Environment

Description

Pasternack's PE91343 hermetically sealed snap-on QMA female to QMA female snap-on adapter is part of our full line of RF components available for same-day shipping. Our QMA to QMA adapter has a female to female gender configuration. PE91343 QMA female to QMA female adapter operates to 6 GHz. The Pasternack RF adapter provides excellent VSWR of 1.08:1 maximum. This hermetic QMA to QMA adapter prevents the leakage of gases, making it suitable for high pressure or vacuum applications or whenever an airtight seal is required.

RF adapters are often used to enable connections between two connector types that would otherwise not mate. Certain adapter configurations can also be used to protect connectors on expensive equipment where the number of connect/disconnect cycles is high. An RF, microwave or millimeter wave adapter is connected to the equipment, and the commonly changed connection is made with the adapter which can be easily replaced when it wears out after high usage; such adapters are referred to as connector savers. Pasternack also offers bulkhead, panel mount, hermetically sealed, reverse polarity, and isolated ground adapter varieties to serve all of your RF, microwave and millimeter wave needs.

Electrical Specifications

Description	Minimum	Typical	Maximum	Units
Frequency Range	DC		6	GHz
VSWR			1.08:1	
Insertion Loss			0.12	dB
Operating Voltage (AC)			500	Vrms
Dielectric Withstanding Voltage (AC)			1,000	Vrms
Insulation Resistance	5,000			MOhms
RF Leakage			70	dB

Mechanical Specifications

Size

Length	0.93 in [23.62 mm]
Width	0.21 in [5.33 mm]
Weight	0.006 lbs [2.72 g]

Click the following link (or enter part number in "SEARCH" on website) to obtain additional part information including price, inventory and certifications: [Hermetically Sealed Snap-On QMA Female to QMA Female Snap-On Adapter PE91343](#)



Hermetically Sealed Snap-On QMA Female to QMA Female Snap-On Adapter

RF Adapters Technical Data Sheet

PE91343

Description	Connector 1	Connector 2
Type	QMA Female	QMA Female
Polarity	Standard	Standard
Connector Option	Hermetically Sealed	Hermetically Sealed
Mating Cycles	100	100
Contact Captivation Axial Force, Min	6.07 lbs [2.75 Kg]	6.07 lbs [2.75 Kg]
Contact Captivation Torque, Min	0.63 in-lbs [0.07 Nm]	0.63 in-lbs [0.07 Nm]

Material Specifications

Description	Connector 1		Connector 2	
	Material	Plating	Material	Plating
Type	Snap-On QMA Female		Snap-On QMA Female	
Contact	Beryllium Copper	Gold 51μ in. minimum	Beryllium Copper	Gold 51μ in. minimum
Insulation	PTFE		PTFE	
Outer Conductor	Brass	Tri-Metal	Brass	Tri-Metal
Body	Brass	Tri-Metal	Brass	Tri-Metal

Environmental Specifications

Temperature

Operating Range -40 to +105 deg C

Hermetic Seal

ATM. Cm3/s

Compliance Certifications (see [product page](#) for current document)

Plotted and Other Data

Notes:

Click the following link (or enter part number in "SEARCH" on website) to obtain additional part information including price, inventory and certifications: [Hermetically Sealed Snap-On QMA Female to QMA Female Snap-On Adapter PE91343](#)



Hermetically Sealed Snap-On QMA Female to QMA Female Snap-On Adapter

RF Adapters Technical Data Sheet

PE91343

Hermetically Sealed Snap-On QMA Female to QMA Female Snap-On Adapter from Pasternack Enterprises has same day shipment for domestic and International orders. Our RF, microwave and millimeter wave products maintain a 99% availability and are part of the broadest selection in the industry.

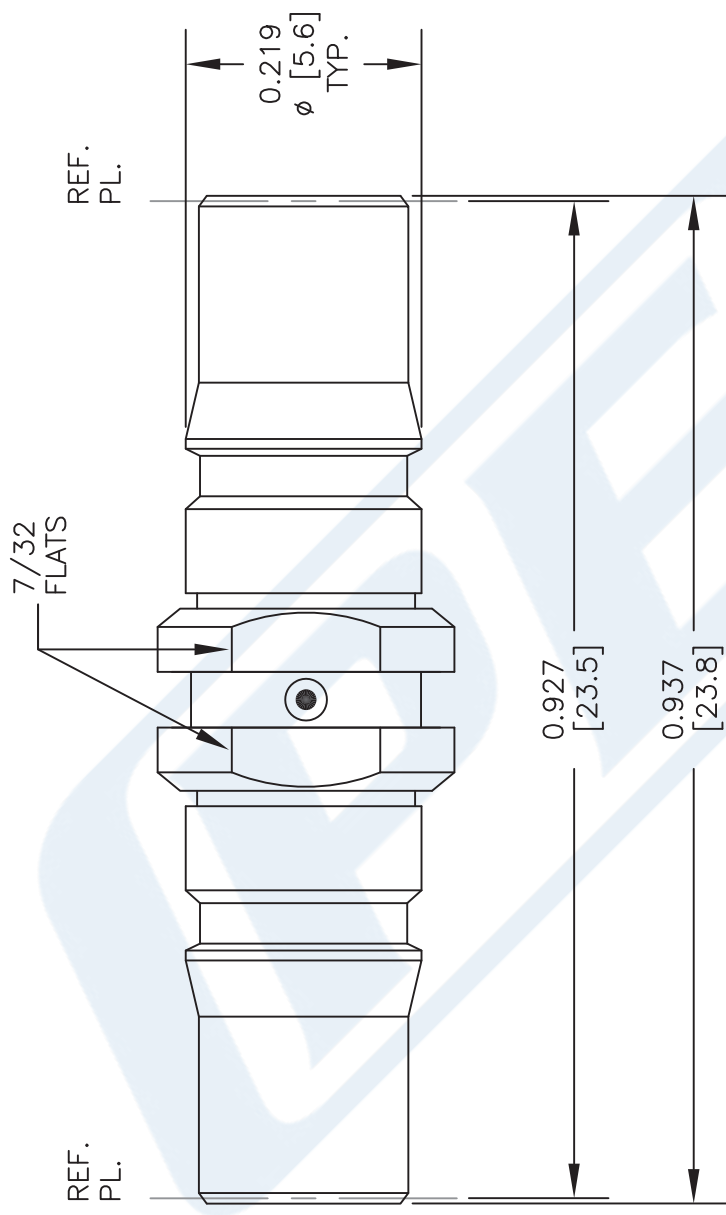
Click the following link (or enter part number in "SEARCH" on website) to obtain additional part information including price, inventory and certifications: [Hermetically Sealed Snap-On QMA Female to QMA Female Snap-On Adapter PE91343](https://www.pasternack.com/qma-female-qma-female-straight-adapter-pe91343-p.aspx)

URL: <https://www.pasternack.com/qma-female-qma-female-straight-adapter-pe91343-p.aspx>

The information contained in this document is accurate to the best of our knowledge and representative of the part described herein. It may be necessary to make modifications to the part and/or the documentation of the part, in order to implement improvements. Pasternack reserves the right to make such changes as required. Unless otherwise stated, all specifications are nominal. Pasternack does not make any representation or warranty regarding the suitability of the part described herein for any particular purpose, and Pasternack does not assume any liability arising out of the use of any part or documentation.

PE91343 CAD Drawing

Hermetically Sealed Snap-On QMA Female to QMA Female Snap-On Adapter



NOTES:
1. UNLESS OTHERWISE SPECIFIED ALL DIMENSIONS ARE NOMINAL.
2. ALL SPECIFICATIONS ARE SUBJECT TO CHANGE WITHOUT NOTICE AT ANY TIME.
3. DIMENSIONS ARE IN INCHES [mm].

DWG TITLE	FSCM NO. 53919
PE91343	

**PASTERNAK®**
THE ENGINEER'S RF SOURCE
Pasternack Enterprises, Inc.
P.O. Box 16759 | Irvine | CA | 92623
Phone: (949) 261-1920 | Fax: (949) 261-7451
Website: www.pasternack.com | E-Mail: sales@pasternack.com