

Precision SMA Female to SMA Female Adapter, 27 Ghz

PE91549



Configuration

- SMA Female Connector 1
- SMA Female Connector 2
- 50 Ohms Impedance
- Precision Design
- Straight Body Geometry

Features

- Max VSWR of 1.2:1 up to 27 GHz
- Gold over Nickel over Copper Plated, Beryllium Copper Contact

Applications

- General Purpose Test
- Precision Test & Measurement

Description

Pasternack's PE91549 SMA female to SMA female adapter is part of our full line of RF components available for same-day shipping. The SMA connector mates mechanically with commercially available 3.5mm and 2.92mm (K) connectors. Our SMA to SMA adapter has a female to female gender configuration built of durable stainless steel in a precision design. PE91549 SMA female to SMA female adapter operates to 27 GHz. The Pasternack RF adapter provides excellent VSWR of 1.2:1 maximum.

RF adapters are often used to enable connections between two connector types that would otherwise not mate. Certain adapter configurations can also be used to protect connectors on expensive equipment where the number of connect/disconnect cycles is high. An RF, microwave or millimeter wave adapter is connected to the equipment, and the commonly changed connection is made with the adapter which can be easily replaced when it wears out after high usage; such adapters are referred to as connector savers. Pasternack also offers bulkhead, panel mount, hermetically sealed, reverse polarity, and isolated ground adapter varieties to serve all of your RF, microwave and millimeter wave needs.

Electrical Specifications

Description	Minimum	Typical	Maximum	Units
Frequency Range	DC		27	GHz
Impedance		50		Ohms
VSWR			1.2:1	
Dielectric Withstanding Voltage (AC)			1,500	Vrms

Mechanical Specifications

Size

Length	0.50 in [12.70 mm]
Width	0.25 in [6.35 mm]
Height	0.25 in [6.35 mm]
Weight	0.30 lbs [136.08 g]

Description	Connector 1	Connector 2
Polarity	Standard	Standard

Precision SMA Female to SMA Female Adapter, 27 Ghz

PE91549



Material Specifications

Description	Connector 1		Connector 2	
	Material	Plating	Material	Plating
Type	SMA Female		SMA Female	
Contact	Beryllium Copper	Gold over Nickel over Copper	Beryllium Copper	Gold over Nickel over Copper
Body	Stainless Steel	Passivated	Stainless Steel	Passivated

Compliance Certifications (see [product page](#) for current document)

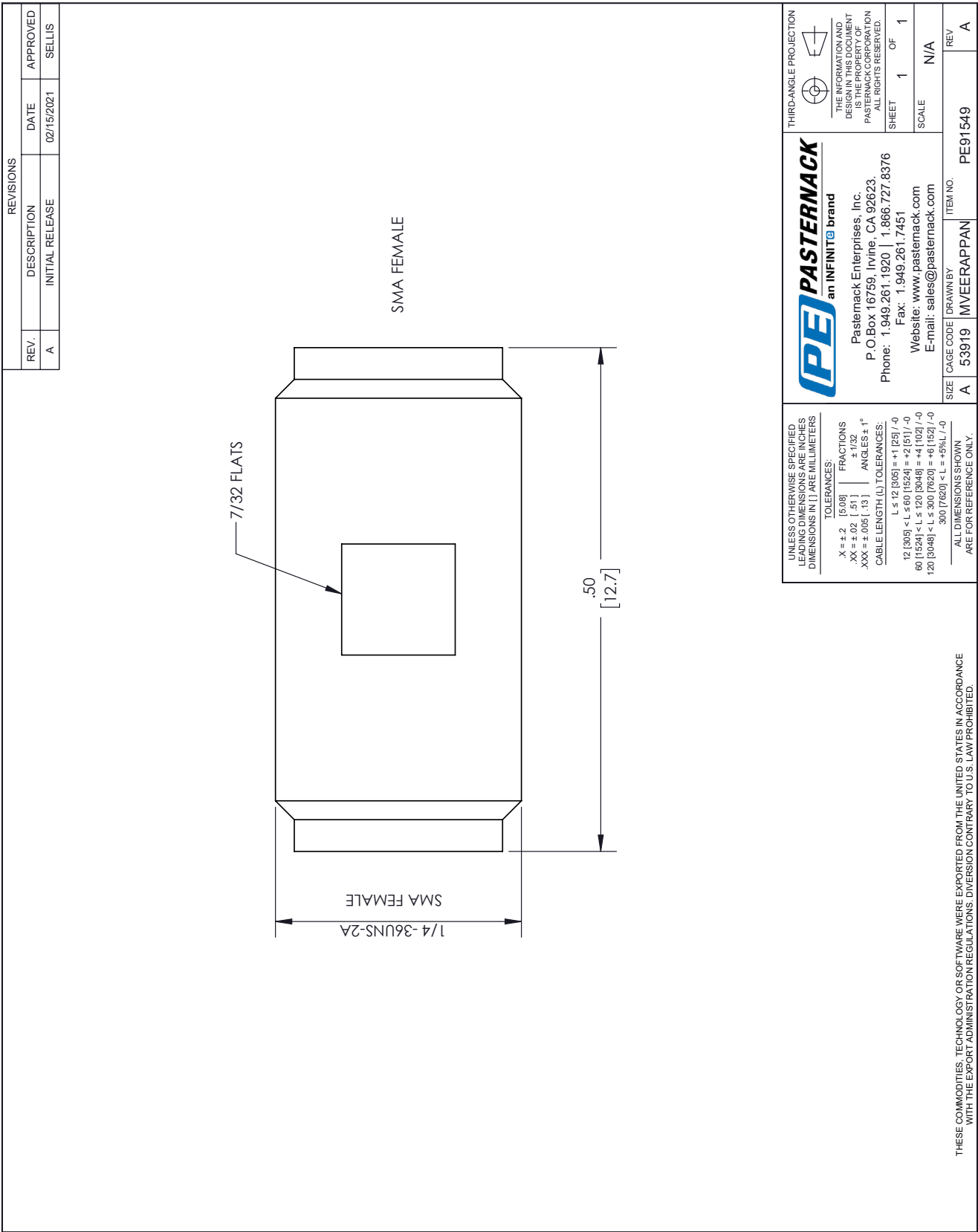
Precision SMA Female to SMA Female Adapter, 27 Ghz from Pasternack Enterprises has same day shipment for domestic and International orders. Our RF, microwave and millimeter wave products maintain a 99.4% availability and are part of the broadest selection in the industry.

Click the following link (or enter part number in "SEARCH" on website) to obtain additional part information including price, inventory and certifications: [Precision SMA Female to SMA Female Adapter, 27 Ghz PE91549](#)

URL: <https://www.pasternack.com/precision-sma-female-to-sma-female-adapter-27-ghz-pe91549-p.aspx>

The information contained within this document is accurate to the best of our knowledge and representative of the part described herein. It may be necessary to make modifications to the part and/or the documentation of the part in order to implement improvements. Pasternack Enterprises reserves the right to make such changes as required. Unless otherwise stated, all specifications are nominal. Pasternack Enterprises does not make any representation or warranty regarding the suitability of the part described herein for any particular purpose, and Pasternack Enterprises does not assume liability arising out of the use of any part or document.

PE91549 CAD Drawing
Precision SMA Female to SMA Female Adapter, 27 Ghz



REVISIONS			
REV.	DESCRIPTION	DATE	APPROVED
A	INITIAL RELEASE	02/15/2021	SELLIS

UNLESS OTHERWISE SPECIFIED
LEADING DIMENSIONS ARE INCHES
DIMENSIONS IN [] ARE MILLIMETERS

TOLERANCES:
X = ±.2 [5.08]
.XX = ±.02 [.51]
.XXX = ±.005 [.13]
ANGLES ± 1°
CABLE LENGTH (L) TOLERANCES:
L ≤ 12 [305] = ±.125 / -0
12 [305] < L ≤ 60 [1524] = ±.25 / -0
60 [1524] < L ≤ 120 [3048] = ±.5 / -0
120 [3048] < L ≤ 300 [7620] = ±1 [25.4] / -0
300 [7620] < L = ±5% L / -0

ALL DIMENSIONS SHOWN
ARE FOR REFERENCE ONLY.

THIRD-ANGLE PROJECTION

THE INFORMATION AND
DESIGN CONTAINED
HEREIN IS THE PROPERTY OF
PASTERNAK CORPORATION
ALL RIGHTS RESERVED

SHEET 1 OF 1

SCALE N/A

REV A

PE PASTERNAK
an INFINITE brand

Pasternack Enterprises, Inc.
P.O. Box 16759, Irvine, CA 92623.
Phone: 1.949.261.1920 | 1.866.727.8376
Fax: 1.949.261.7451
Website: www.pasternack.com
E-mail: sales@pasternack.com

CAGE CODE 53919 DRAWN BY MVEERAPPAN ITEM NO. PE91549