



Relays & Contactors > Electromechanical Relays



Relay & Contactor Type: **General Purpose Power Relay**

Current Type: **DC**

Coil Magnetic System: **Monostable**

Contact Arrangement: **1 Form C SPDT-CO**

Contact Current Rating: **7 A**

Features

Product Type Features

Relay & Contactor Type	General Purpose Power Relay
------------------------	-----------------------------

Configuration Features

Contact Number of Poles	1
Contact Arrangement	1 Form C SPDT-CO

Electrical Characteristics

Contact Limiting Making Current	12 A
Contact Limiting Continuous Current	7 A
Insulation Initial Dielectric Between Open Contacts	1000 Vrms
Contact Switching Voltage (Max)	400 VAC
Coil Resistance	1280 Ω
Contact Current Rating	7 A
Coil Voltage Rating	24 VDC
Contact Voltage Rating	250 VAC
Coil Power Rating DC	.45 W



Insulation Initial Dielectric Between Contacts & Coil	2000 Vrms
Body Features	
Product Weight	9 g[.317 oz]
Enclosure Type	Flux Resistant Automatic Solder Capable & Washable
Contact Features	
Contact Material	AgNi90/10
Termination Features	
Main Termination & Connection Type	Solder Pins
Coil Termination & Connection Type	Solder Pins
Mechanical Attachment	
Product Mount Type	Board Mount
Dimensions	
Insulation Clearance Between Contact & Coil	2.5 mm[.098 in]
Insulation Creepage Between Contact & Coil	2.5 mm[.098 in]
Product Width	16.2 mm[.637 in]
Product Length	21.2 mm[.834 in]
Product Height	14.9 mm[.586 in]
Usage Conditions	
Operating Temperature Range	-25 – 70 °C[-13 – 158 °F]
Environmental Category of Protection	RTIII
Environmental Ambient Temperature (Max)	70 °C[158 °F]
Operation/Application	
Solder Process	Wave Solder Capable
Current Type	DC
Coil Magnetic System	Monostable
Packaging Features	
Packaging Method	Carton
Other	
Coil Power Rating Class	.4 – .5 W
Contact Current Class	5 – 10 A
Environmental Ambient Temperature Class	50 – 70 °C



Height Class (Mechanical)	14 – 15 mm
Length Class (Mechanical)	20 – 25 mm
Width Class (Mechanical)	16 – 20 mm

Product Compliance

For compliance documentation, visit the product page on TE.com>

EU RoHS Directive 2011/65/EU	Compliant
EU ELV Directive 2000/53/EC	Out of Scope
China RoHS 2 Directive MIIT Order No 32, 2016	No Restricted Materials Above Threshold
EU REACH Regulation (EC) No. 1907/2006	Current ECHA Candidate List: JAN 2025 (247) Candidate List Declared Against: JAN 2025 (247) Does not contain REACH SVHC
Halogen Content	Low Halogen - Br, Cl, F, I < 900 ppm per homogenous material. Also BFR/CFR/PVC Free
Solder Process Capability	Wave solder capable to 260°C

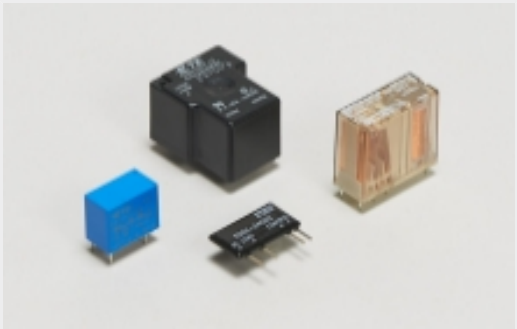
Product Compliance Disclaimer

This information is provided based on reasonable inquiry of our suppliers and represents our current actual knowledge based on the information they provided. This information is subject to change. The part numbers that TE has identified as EU RoHS compliant have a maximum concentration of 0.1% by weight in homogenous materials for lead, hexavalent chromium, mercury, PBB, PBDE, DBP, BBP, DEHP, DIBP, and 0.01% for cadmium, or qualify for an exemption to these limits as defined in the Annexes of Directive 2011/65/EU (RoHS2). Finished electrical and electronic equipment products will be CE marked as required by Directive 2011/65/EU. Components may not be CE marked. Additionally, the part numbers that TE has identified as EU ELV compliant have a maximum concentration of 0.1% by weight in homogenous materials for lead, hexavalent chromium, and mercury, and 0.01% for cadmium, or qualify for an exemption to these limits as defined in the Annexes of Directive 2000/53/EC (ELV). Regarding the REACH Regulation, the information TE provides on SVHC in articles for this part number is based on the latest European Chemicals Agency (ECHA) 'Guidance on requirements for substances in articles' posted at this URL: <https://echa.europa.eu/guidance-documents/guidance-on-reach>

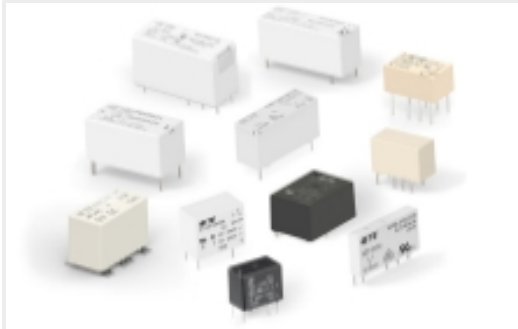
Compatible Parts



Also in the Series | SCHRACK V23148



General Purpose Power Relays(32)



PCB Relays(32)

Customers Also Bought



TE Part #1-1393260-3
SR6B4110 - V23050-A1110-A542



TE Part #3-2176610-7
EP 1W (SS) 33R 5%



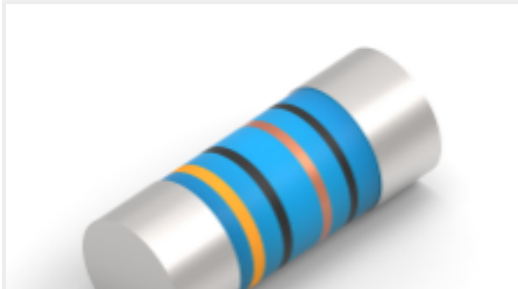
TE Part #2-2176502-2
CJP 60W 12R 5% Lead



TE Part #1624130-2
23E 22KA 6.35X50FL B7 CAT



TE Part #4-2176610-1
EP 1W (SS) 47R 5%



TE Part #2176315-3
MELF SMA_A 150R 0.1% 15PPM 0204 0.4W



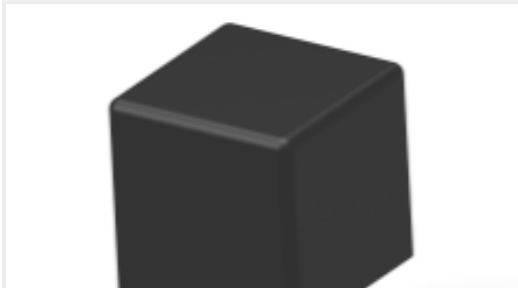
TE Part #T4144015051-000
M12 R/A M PNL REAR A-CODE 5P PCBSTD



TE Part #350209-1
02P CMNL HDR ASSY PC NATL



TE Part #2-100103-6
26P.A/L.STRAIN REL.



TE Part #1-1393302-3
VF711F12/X838

Documents

- CAD Files

3D PDF

3D

Customer View Model

ENG_CVM_CVM_1-1393203-1_A.2d_dxf.zip

English

Customer View Model

ENG_CVM_CVM_1-1393203-1_A.3d_igs.zip



English

Customer View Model

[ENG_CVM_CVM_1-1393203-1_A.3d_stp.zip](#)

English

By downloading the CAD file I accept and agree to the [Terms and Conditions](#) of use.

Datasheets & Catalog Pages

[Power PCB Relay U/UB](#)

English

Product Specifications

[Definitions General Purpose Relays](#)

English