



Rail D-Sub Backshells

TE Internal #: 1-2308345-1

Shielded, Backshell, Zinc, Straight, 4 Shell Size, 37 / 62 Position,
Crimp Ferrule Termination, Rail D-Sub Backshells

[View on TE.com >](#)

Connectors > Connector Accessories > Connector Backshells > D-SUB BACKSHELL SIZE 4



Connector Backshell Product Style: **Shielded**
Connector Backshell Product Type: **Backshell**
Primary Product Material: **Zinc**
Body Orientation: **Straight**
Compatible With Connector Shell Size: **4**

[All D-SUB BACKSHELL SIZE 4 \(8\)](#)

Features

Product Type Features

Connector Backshell Product Style	Shielded
Connector Backshell Product Type	Backshell
Sealable	No
Termination Device Type	Crimp Ferrule

Configuration Features

Number of Positions	37, 62
---------------------	--------

Body Features

Cable Exit Angle	180°, 45°
Primary Product Material	Zinc

Mechanical Attachment

Mating Retention Type	Jackscrew
Thread Size	4-40 UNC

Housing Features



Body Orientation	Straight
Compatible With Connector Shape	D-Shaped

Usage Conditions

Operating Temperature Range	-40 – 90 °C[-40 – 194 °F]
-----------------------------	---------------------------

Operation/Application

Compatible With Connector Shell Size	4
--------------------------------------	---

Industry Standards

UL Flammability Rating	UL 94V-0
------------------------	----------

Product Compliance

For compliance documentation, visit the product page on [TE.com](#)>

EU RoHS Directive 2011/65/EU	Compliant
EU ELV Directive 2000/53/EC	Compliant
China RoHS 2 Directive MIIT Order No 32, 2016	No Restricted Materials Above Threshold
EU REACH Regulation (EC) No. 1907/2006	Current ECHA Candidate List: JAN 2025 (247) Candidate List Declared Against: JUNE 2024 (241) Does not contain REACH SVHC
Halogen Content	Low Halogen - Br, Cl, F, I < 900 ppm per homogenous material. Also BFR/CFR/PVC Free
Solder Process Capability	Not reviewed for solder process capability

Product Compliance Disclaimer

This information is provided based on reasonable inquiry of our suppliers and represents our current actual knowledge based on the information they provided. This information is subject to change. The part numbers that TE has identified as EU RoHS compliant have a maximum concentration of 0.1% by weight in homogenous materials for lead, hexavalent chromium, mercury, PBB, PBDE, DBP, BBP, DEHP, DIBP, and 0.01% for cadmium, or qualify for an exemption to these limits as defined in the Annexes of Directive 2011/65/EU (RoHS2). Finished electrical and electronic equipment products will be CE marked as required by Directive 2011/65/EU. Components may not be CE marked. Additionally, the part numbers that TE has identified as EU ELV compliant have a maximum concentration of 0.1% by weight in homogenous materials for lead, hexavalent chromium, and mercury, and 0.01% for cadmium, or qualify for an exemption to these limits as defined in the Annexes of Directive 2000/53/EC (ELV). Regarding the REACH Regulation, the information TE provides on SVHC in articles for this part number is based on the latest European Chemicals Agency (ECHA) ‘Guidance on requirements for substances in articles’ posted at this URL: <https://echa.europa.eu/guidance-documents/guidance-on-reach>

Compatible Parts

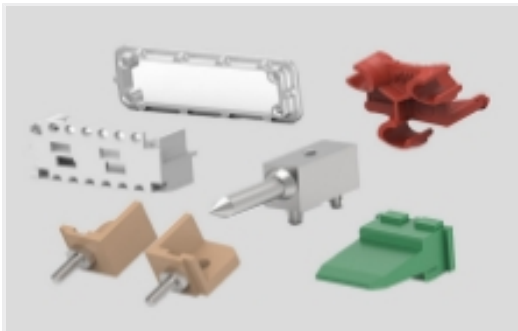


TE Part # 1-2308348-8
CRIMP FLANGE 8 LARGE

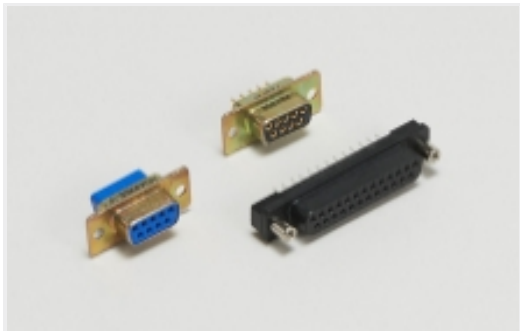
Also in the Series | Rail D-Sub Backshells



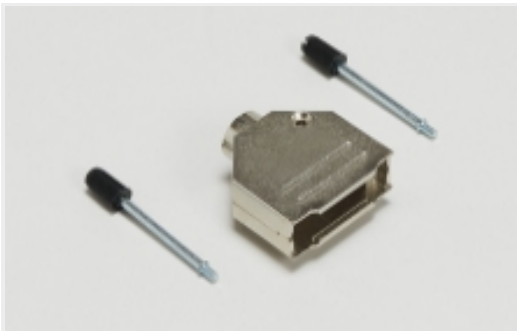
Connector Contacts(5)



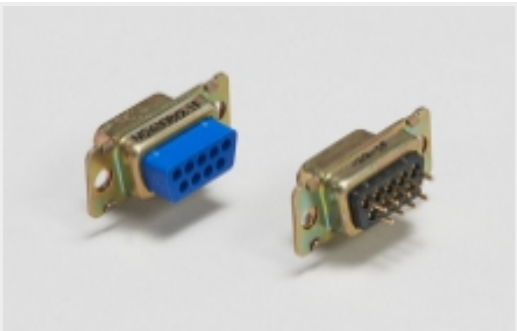
Connector Hardware(19)



D-Shaped Connectors(10)



D-Sub Backshells & Clamps(55)



Panel Mount D-Sub Connectors(10)

Customers Also Bought



TE Part #1676185-2
RN 0805 140R 0.1% 10PPM 1KRL



TE Part #CAT-R131-C1121A
Cable Clamp for Size 4-5 STD/5QL Shell



TE Part #1-2308342-1
FULL METAL HOODS SIZE 3



TE Part #3-1676913-8
YR1 0.1% 226K



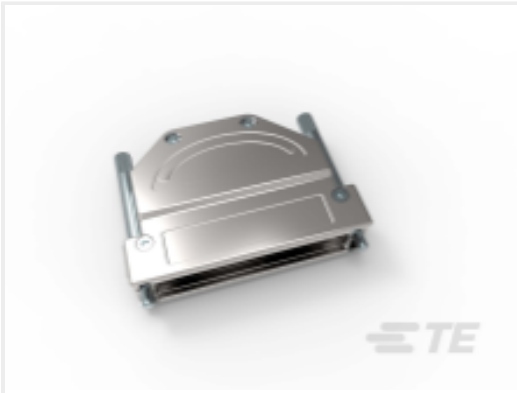
TE Part #3822883002
44A1121-18-2/6-9



TE Part #2-1879452-9
TE 750W 220R 5% Bracket



TE Part #3-1879505-8
CRGH0603 1% 2K8 0.2W



TE Part #1-2308345-6
FULL METAL HOODS SIZE 4 - 6 (RAW)



Documents

Product Drawings
FULL METAL HOODS SIZE 4
English

CAD Files
3D PDF
3D
Customer View Model
ENG_CVM_CVM_1-2308345-1_A.2d_dxf.zip
English
Customer View Model
ENG_CVM_CVM_1-2308345-1_A.3d_igs.zip
English
Customer View Model
ENG_CVM_CVM_1-2308345-1_A.3d_stp.zip
English

By downloading the CAD file I accept and agree to the [Terms and Conditions](#) of use.

Datasheets & Catalog Pages
Rail D-Sub Backshells Flyer
English