



Product Compliance

For compliance documentation, visit the product page on TE.com>

EU RoHS Directive 2011/65/EU	Compliant
EU ELV Directive 2000/53/EC	Not Yet Reviewed
China RoHS 2 Directive MIIT Order No 32, 2016	No Restricted Materials Above Threshold
EU REACH Regulation (EC) No. 1907/2006	Current ECHA Candidate List: JAN 2025 (247) Candidate List Declared Against: JUL 2021 (219) Does not contain REACH SVHC
Halogen Content	Low Halogen - Br, Cl, F, I < 900 ppm per homogenous material. Also BFR/CFR/PVC Free
Solder Process Capability	Not reviewed for solder process capability

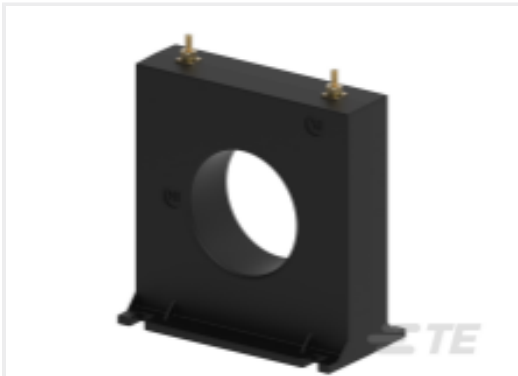
Product Compliance Disclaimer

This information is provided based on reasonable inquiry of our suppliers and represents our current actual knowledge based on the information they provided. This information is subject to change. The part numbers that TE has identified as EU RoHS compliant have a maximum concentration of 0.1% by weight in homogenous materials for lead, hexavalent chromium, mercury, PBB, PBDE, DBP, BBP, DEHP, DIBP, and 0.01% for cadmium, or qualify for an exemption to these limits as defined in the Annexes of Directive 2011/65/EU (RoHS2). Finished electrical and electronic equipment products will be CE marked as required by Directive 2011/65/EU. Components may not be CE marked. Additionally, the part numbers that TE has identified as EU ELV compliant have a maximum concentration of 0.1% by weight in homogenous materials for lead, hexavalent chromium, and mercury, and 0.01% for cadmium, or qualify for an exemption to these limits as defined in the Annexes of Directive 2000/53/EC (ELV). Regarding the REACH Regulation, the information TE provides on SVHC in articles for this part number is based on the latest European Chemicals Agency (ECHA) 'Guidance on requirements for substances in articles' posted at this URL: <https://echa.europa.eu/guidance-documents/guidance-on-reach>

Customers Also Bought



TE Part #103634-8
09 MTE HDR SRRA LATCH .100CL



TE Part #CG9266-000
CI-6SFT-401



TE Part #DT06-4S-EP04
PLG, 4P, GRY, N, CAP



TE Part #726343
SOL. RING TONGUE



TE Part #HDP24-24-19PN-L017
REC, 19P, BLK, N, RNG, 12/16, P



TE Part #1-480706-1
09P UMNL PLUG HSG BRN



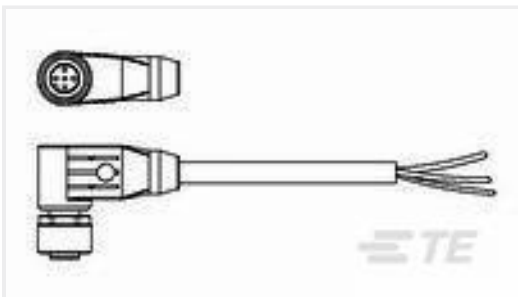
TE Part #2329362-6
PB ON/OFF RC BLK M1 TERM IP68 500MM LHS



TE Part #T4110401041-000
M12,FEMALE,STRAIGHT,B CODE,4P, PG7,GOLD



TE Part #2329362-7
PB ON/OFF RC RED M1 TERM IP68 500MM LHS



TE Part #2273099-3
M12 x 1.0 angled socket pigt shld A

Documents

CAD Files

3D PDF

3D

Customer View Model

ENG_CVM_CVM_1-2320401-3_A.2d_dxf.zip

English

Customer View Model

ENG_CVM_CVM_1-2320401-3_A.3d_igs.zip

English

Customer View Model

ENG_CVM_CVM_1-2320401-3_A.3d_stp.zip

English

By downloading the CAD file I accept and agree to the [Terms and Conditions](#) of use.

Datasheets & Catalog Pages

Industrial Ethernet Switches With M12 Connectivity

English

5-PORT EN50155 POE ETHERNET SWITCH

English

