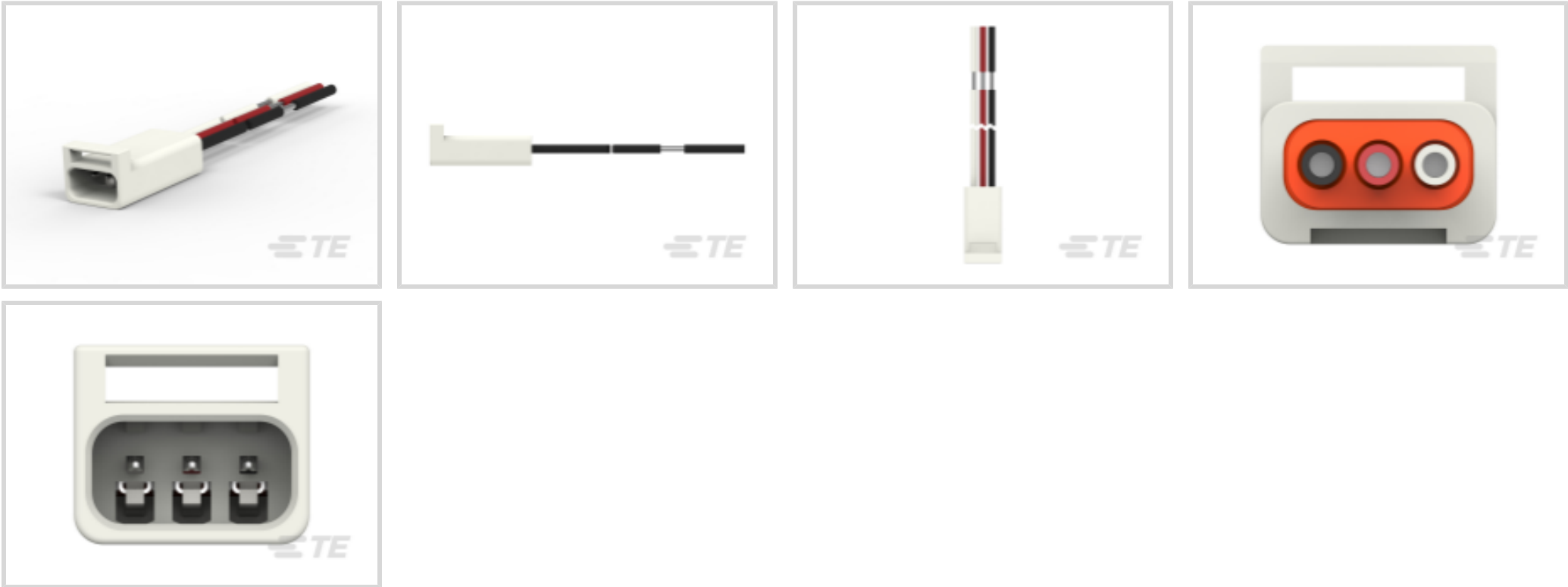




Connectors > Lighting Connectors > Plug & Socket Lighting Connectors



Connector System: **Wire-to-Wire**
Number of Positions: **3**
Centerline (Pitch): **.1 mm [2.5 in]**
Sealable: **Yes**
Connector & Contact Terminates To: **Wire & Cable**

Features

Product Type Features

Connector System	Wire-to-Wire
Sealable	Yes
Connector & Contact Terminates To	Wire & Cable
Lighting Connector Style	Receptacle

Configuration Features

Number of Positions	3
---------------------	---

Electrical Characteristics

Operating Voltage	300 VDC
-------------------	---------

Body Features

Primary Product Color	White
-----------------------	-------

Contact Features

Contact Current Rating (Max)	5 A
------------------------------	-----

Housing Features

--	--



Centerline (Pitch)	.1 mm[2.5 in]
--------------------	---------------

Usage Conditions

Operating Temperature Range	-40 – 105 °C[-40 – 221 °F]
-----------------------------	----------------------------

Product Compliance

For compliance documentation, visit the product page on TE.com>

EU RoHS Directive 2011/65/EU	Compliant
EU ELV Directive 2000/53/EC	Compliant
China RoHS 2 Directive MIIT Order No 32, 2016	No Restricted Materials Above Threshold
EU REACH Regulation (EC) No. 1907/2006	Current ECHA Candidate List: JAN 2025 (247) Candidate List Declared Against: JAN 2022 (223) Does not contain REACH SVHC
Halogen Content	Low Halogen - Br, Cl, F, I < 900 ppm per homogenous material. Also BFR/CFR/PVC Free
Solder Process Capability	Not applicable for solder process capability

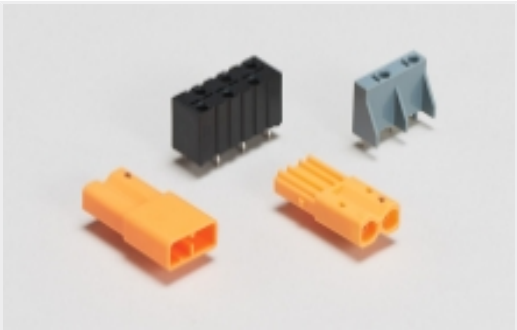
Product Compliance Disclaimer

This information is provided based on reasonable inquiry of our suppliers and represents our current actual knowledge based on the information they provided. This information is subject to change. The part numbers that TE has identified as EU RoHS compliant have a maximum concentration of 0.1% by weight in homogenous materials for lead, hexavalent chromium, mercury, PBB, PBDE, DBP, BBP, DEHP, DIBP, and 0.01% for cadmium, or qualify for an exemption to these limits as defined in the Annexes of Directive 2011/65/EU (RoHS2). Finished electrical and electronic equipment products will be CE marked as required by Directive 2011/65/EU. Components may not be CE marked. Additionally, the part numbers that TE has identified as EU ELV compliant have a maximum concentration of 0.1% by weight in homogenous materials for lead, hexavalent chromium, and mercury, and 0.01% for cadmium, or qualify for an exemption to these limits as defined in the Annexes of Directive 2000/53/EC (ELV). Regarding the REACH Regulation, the information TE provides on SVHC in articles for this part number is based on the latest European Chemicals Agency (ECHA) 'Guidance on requirements for substances in articles' posted at this URL: <https://echa.europa.eu/guidance-documents/guidance-on-reach>

Compatible Parts



Also in the Series | SlimSeal Standard Connectors

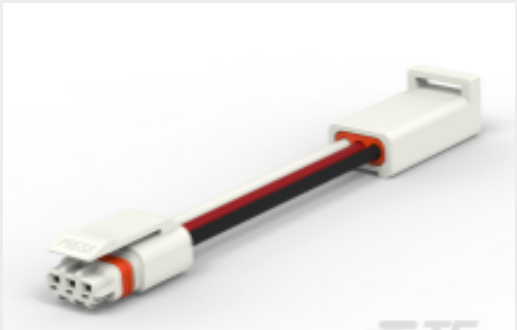


Ballast Connectors(1)



Plug & Socket Lighting Connectors(20)

Customers Also Bought



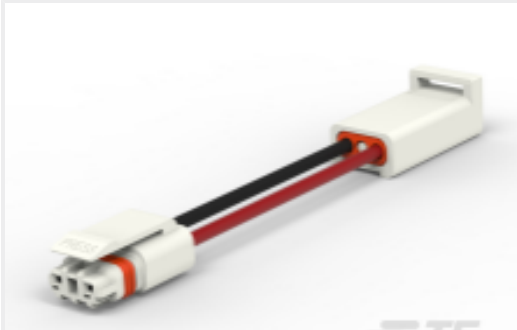
TE Part #1-2834184-1
3P,FULL CABLE ASSY-152.4MM,
WHITE,TIN



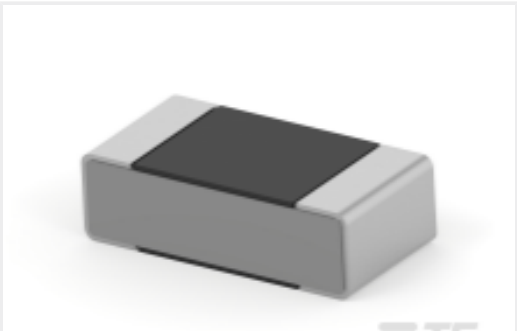
TE Part #CAT-AM705-T273
AMP MCP, RECEPTACLE AND TAB



TE Part #1-2834068-2
PIN CONTACT,MINIATURE
WATERPROOF CONN



TE Part #1-2834184-3
2P,FULL CABLE ASSY-152.4MM,
WHITE,TIN



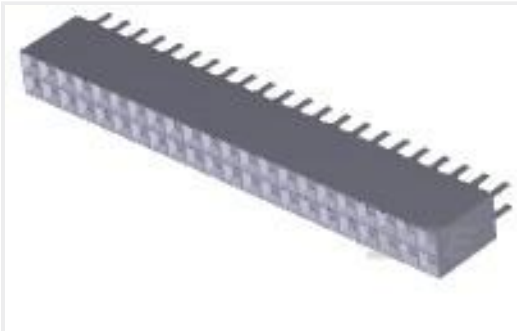
TE Part #1-2176280-6
CPF 0402 147K 0.1% 25PPM 1K RL



TE Part #1-1564337-1
16POS, MIXED,REC HSG,ASSY



TE Part #1-1564407-1
16POS, MIXED,TAB HSG,ASSY,CODA



TE Part #7-534206-2
44 MODII VRT DR CE 100/115



TE Part #1-962916-2
TAB 2.8x0.8 CONTACT CS SWS Ag

Documents

Product Drawings
3P,REC CABLE ASSY-200MM,WHITE,TIN
English

CAD Files
3D PDF
3D
Customer View Model
ENG_CVM_CVM_1-2834183-2_A.2d_dxf.zip



English

Customer View Model

[ENG_CVM_CVM_1-2834183-2_A.3d_igs.zip](#)

English

Customer View Model

[ENG_CVM_CVM_1-2834183-2_A.3d_stp.zip](#)

English

By downloading the CAD file I accept and agree to the [Terms and Conditions](#) of use.

Product Specifications

[Application Specification](#)

English