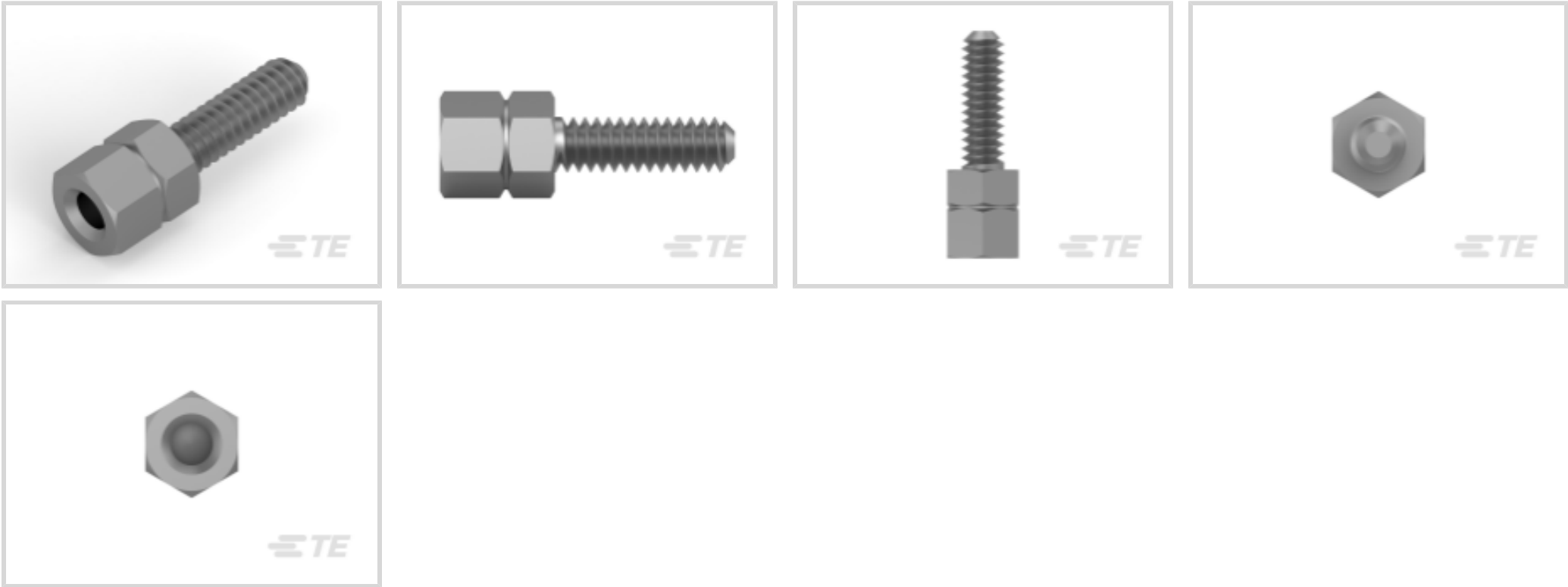




Connectors > Connector Accessories > Connector Hardware



Connector Hardware Accessory Type: **Female Screwlock**
Hardware Accessory Function: **Latching, Locking & Retention**

Features

Product Type Features

Connector Hardware Accessory Type	Female Screwlock
Hardware Accessory Function	Latching, Locking & Retention

Mechanical Attachment

Thread Size	4-40 UNC
-------------	----------

Dimensions

Thread Length	9.7 mm[.382 in]
Product Feature Length	15.9 mm[.62 in]

Packaging Features

Packaging Method	Box
Packaging Quantity	1000

Product Compliance

[For compliance documentation, visit the product page on TE.com>](#)

EU RoHS Directive 2011/65/EU	Compliant with Exemptions
EU ELV Directive 2000/53/EC	Compliant with Exemptions
China RoHS 2 Directive MIIT Order No 32, 2016	Restricted Materials Above Threshold
EU REACH Regulation (EC) No. 1907/2006	Current ECHA Candidate List: JAN 2025 (247)



Candidate List Declared Against: JAN 2025
(247)
SVHC > Threshold:
Pb (3.5% in 3441353)

Article Safe Usage Statements:
Do not eat, drink or smoke when using this product. Wash thoroughly after handling. Recycle if possible and dispose of the article by following all applicable governmental regulations relevant to your geographic location.

Halogen Content	Low Halogen - Br, Cl, F, I < 900 ppm per homogenous material. Also BFR/CFR/PVC Free
Solder Process Capability	Not applicable for solder process capability

Product Compliance Disclaimer


This information is provided based on reasonable inquiry of our suppliers and represents our current actual knowledge based on the information they provided. This information is subject to change. The part numbers that TE has identified as EU RoHS compliant have a maximum concentration of 0.1% by weight in homogenous materials for lead, hexavalent chromium, mercury, PBB, PBDE, DBP, BBP, DEHP, DIBP, and 0.01% for cadmium, or qualify for an exemption to these limits as defined in the Annexes of Directive 2011/65/EU (RoHS2). Finished electrical and electronic equipment products will be CE marked as required by Directive 2011/65/EU. Components may not be CE marked. Additionally, the part numbers that TE has identified as EU ELV compliant have a maximum concentration of 0.1% by weight in homogenous materials for lead, hexavalent chromium, and mercury, and 0.01% for cadmium, or qualify for an exemption to these limits as defined in the Annexes of Directive 2000/53/EC (ELV). Regarding the REACH Regulation, the information TE provides on SVHC in articles for this part number is based on the latest European Chemicals Agency (ECHA) 'Guidance on requirements for substances in articles' posted at this URL: <https://echa.europa.eu/guidance-documents/guidance-on-reach>

Compatible Parts




TE Part # 828347-2
HD VERSCHRAUBUNG


Also in the Series | AMPLIMITE Kit




Connector Caps & Covers(2)



Connector Hardware(92)



Connector Seals & Cavity Plugs(4)

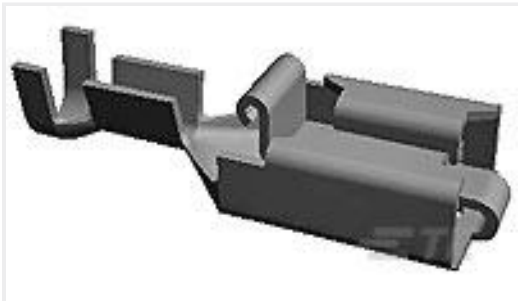


Connector Strain Relief(131)

Customers Also Bought



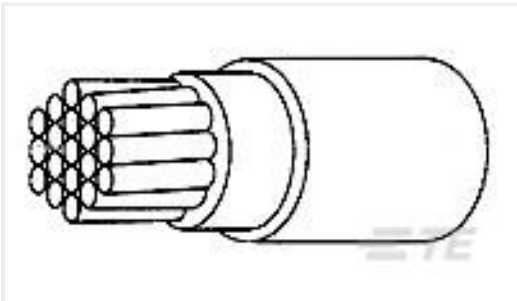
TE Part #5053094080
RNF-100-1/4-0-SP



TE Part #341001-6
PL 250 REC TERMINAL 13-11 PTPB LP



TE Part #DT06-08SA
PLG, 8P, GRY, N, A



TE Part #E257433001
VG-95218-T020-E029



TE Part #DRC16-70SBE
PLG, 70P, BLK, E, B



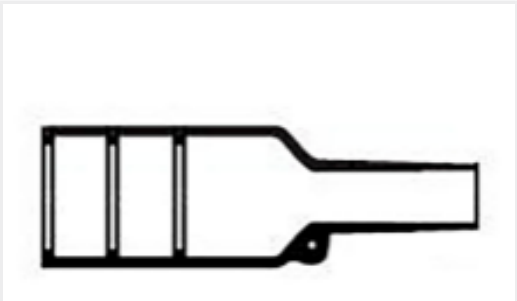
TE Part #4-1825136-5
A101SYCQ04



TE Part #926682-3
06P UNIV.M-N-L.HSG.



TE Part #167292-1
09P.HDP20 PLUG ASSY



TE Part #CAT-R21-731072
Bulbous Heat Shrink Boots: Lipped, Straight

Documents

Product Drawings
HD-20SCHRAUB-SICHRG

English

CAD Files

3D PDF

3D

Customer View Model

ENG_CVM_CVM_1-828102-1_J.2d_dxf.zip

English

Customer View Model

ENG_CVM_CVM_1-828102-1_J.3d_igs.zip

English

Customer View Model

ENG_CVM_CVM_1-828102-1_J.3d_stp.zip

English

By downloading the CAD file I accept and agree to the Terms and Conditions of use.