



Connectors > Automotive Connectors > Automotive Housings > Timer Connector Housing



Number of Positions: 9

Connector & Housing Type: **Housing for Female Terminals**

Mating Tab Width: 2.8 mm [.11 in]

Connector System: **Wire-to-Wire**

Centerline (Pitch): 5 mm [.197 in]

[All Timer Connector Housing \(437\)](#)

Features

Product Type Features

Mixed & Hybrid Connector	No
Connector Shape	Rectangular
Connector & Housing Type	Housing for Female Terminals
Connector System	Wire-to-Wire
Sealable	No
Primary Locking Feature	Integrated in Housing
Connector & Contact Terminates To	Wire & Cable

Configuration Features

Number of Positions	9
Number of Rows	3

Electrical Characteristics

Nominal Voltage Architecture	28 V
------------------------------	------

Body Features

Primary Product Color	Gray
Connector & Keying Code	A

Contact Features

--	--



Contact Size	2.8mm
Contact Type	Receptacle
Mating Tab Width	2.8 mm[.11 in]

Mechanical Attachment

Strain Relief	Without
Terminal Position Assurance	Yes
Mating Alignment Type	Keyed
Mating Alignment	With
Connector Mounting Type	Cable Mount (Free-Hanging)

Housing Features

Housing Material	PBT GF
Centerline (Pitch)	5 mm[.197 in]

Dimensions

Product Width	16.2 mm[.638 in]
Product Length	16.2 mm[.638 in]
Connector Height	26.5 mm[1.043 in]

Operation/Application

Circuit Application	Power
---------------------	-------

Packaging Features

Packaging Method	Carton
------------------	--------

Other

Serviceable	No
Connector Position Assurance Capable	No

Product Compliance

For compliance documentation, visit the product page on TE.com>

EU RoHS Directive 2011/65/EU	Compliant
EU ELV Directive 2000/53/EC	Compliant
China RoHS 2 Directive MIIT Order No 32, 2016	No Restricted Materials Above Threshold
EU REACH Regulation (EC) No. 1907/2006	Current ECHA Candidate List: JAN 2025 (247) Candidate List Declared Against: JAN 2025 (247)



Does not contain REACH SVHC




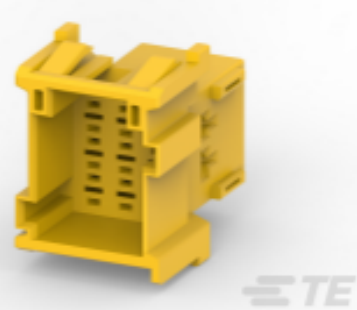

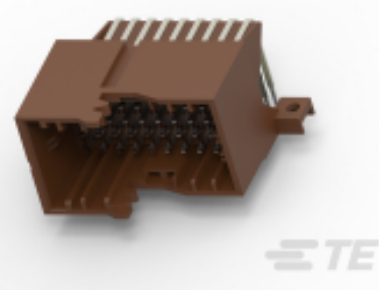

Halogen Content	Low Halogen - Br, Cl, F, I < 900 ppm per homogenous material. Also BFR/CFR/PVC Free
-----------------	-------------------------------------------------------------------------------------

Solder Process Capability	Not applicable for solder process capability
---------------------------	----------------------------------------------

Product Compliance Disclaimer

This information is provided based on reasonable inquiry of our suppliers and represents our current actual knowledge based on the information they provided. This information is subject to change. The part numbers that TE has identified as EU RoHS compliant have a maximum concentration of 0.1% by weight in homogenous materials for lead, hexavalent chromium, mercury, PBB, PBDE, DBP, BBP, DEHP, DIBP, and 0.01% for cadmium, or qualify for an exemption to these limits as defined in the Annexes of Directive 2011/65/EU (RoHS2). Finished electrical and electronic equipment products will be CE marked as required by Directive 2011/65/EU. Components may not be CE marked. Additionally, the part numbers that TE has identified as EU ELV compliant have a maximum concentration of 0.1% by weight in homogenous materials for lead, hexavalent chromium, and mercury, and 0.01% for cadmium, or qualify for an exemption to these limits as defined in the Annexes of Directive 2000/53/EC (ELV). Regarding the REACH Regulation, the information TE provides on SVHC in articles for this part number is based on the latest European Chemicals Agency (ECHA) 'Guidance on requirements for substances in articles' posted at this URL: <https://echa.europa.eu/guidance-documents/guidance-on-reach>

Compatible Parts

 <p>TE Part # CAT-LMPH9507 Low & Medium Power Header</p>	 <p>TE Part # 967631-1 2. KONT-SICHERUNG 9P</p>	 <p>TE Part # 1-927768-1 JPT REC 2.8 Contact SRC Au</p>	 <p>TE Part # 1-967626-1 TAB HOUSING, 2,8MM,9POS.</p>
 <p>TE Part # CAT-T4827-T273 TIMER, RECEPTACLE AND TAB</p>	 <p>TE Part # CAT-M4599-H342 AMP MCP Unsealed Headers</p>	 <p>TE Part # 1719810-1 JPT REC 2.8 Contact SRC Sn</p>	

Also in the Series | Junior Power Timer



Automotive Connector Caps & Covers
(9)



Automotive Connector Locks &
Position Assurance(8)



Automotive Housings(279)



Automotive Terminals(150)



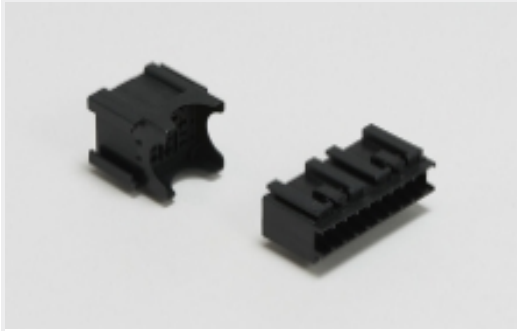
Busbars & Terminals(1)



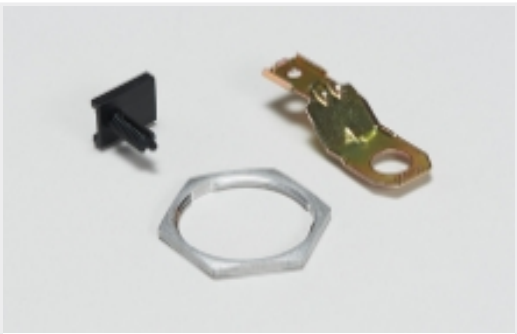
Connector Seals & Cavity Plugs(7)



Insertion & Extraction Tools(8)



Module Components(1)



Other Automotive Connector
Accessories(2)



Special Purpose Terminals(2)

Customers Also Bought



TE Part #CAT-T4827-CH8172
Timer Connector Housing



TE Part #CAT-J96-ULPA
Unsealed Locks and Position Assurance

Documents

Product Drawings
JUN-POW-TIM GEH 9P

English

CAD Files
Customer View Model
ENG_CVM_1-967621-4_D.3d_igs.zip

English



Customer View Model

[ENG_CVM_1-967621-4_D.3d_stp.zip](#)

English

Customer View Model

[ENG_CVM_1-967621-4_D.2d_dxf.zip](#)

English

3D PDF

English

By downloading the CAD file I accept and agree to the [Terms and Conditions](#) of use.

Product Specifications

[Product Specification](#)

English

[Product Specification](#)

English