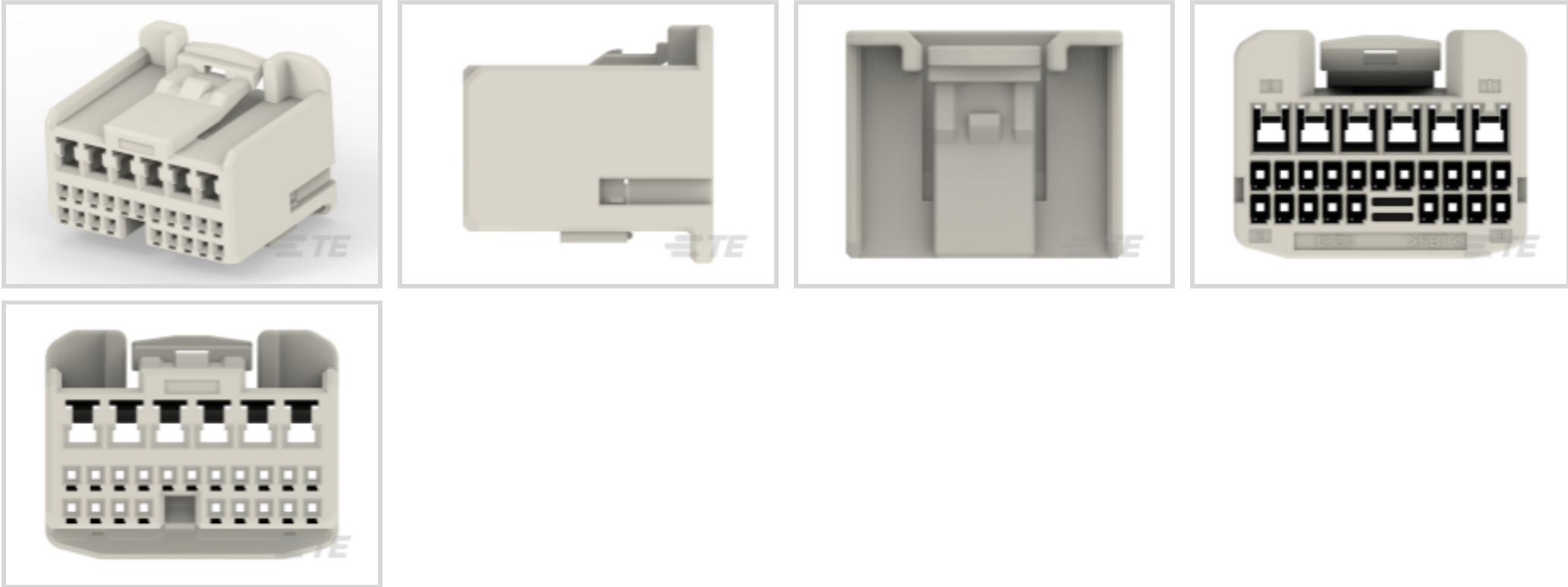




Connectors > Automotive Connectors > Automotive Housings > TH/.025 CONNECTOR SYSTEM, HOUSING



Number of Positions: 26

Connector & Housing Type: Housing for Female Terminals

Mating Tab Width: .64 mm, 2.3 mm [.025 in, .09 in]

Connector System: Wire-to-Board, Wire-to-Device

Centerline (Pitch): 2.2 mm, 4 mm [.087 in, .157 in]

[All TH/.025 Connector System, Housing \(168\)](#)

Features

Product Type Features

Mixed & Hybrid Connector	Yes
Connector Shape	Rectangular
Connector & Housing Type	Housing for Female Terminals
Connector System	Wire-to-Board, Wire-to-Device
Sealable	No
Primary Locking Feature	Integrated in Housing
Connector & Contact Terminates To	Wire & Cable

Configuration Features

Number of Positions	26
Number of Rows	3

Electrical Characteristics

Operating Voltage	12 VDC
Nominal Voltage Architecture	12 V



Body Features

Cable Exit Angle	180°
Primary Product Color	Natural

Contact Features

Contact Size	.63mm, 2.3mm
Contact Type	Receptacle
Mating Tab Width	.64 mm, 2.3 mm[.025 in][.09 in]

Mechanical Attachment

Strain Relief	Without
Terminal Position Assurance	No
Mating Alignment Type	Polarization
Mating Alignment	With
Connector Mounting Type	Cable Mount (Free-Hanging)

Housing Features

Housing Material	PBT
Centerline (Pitch)	2.2 mm, 4 mm[.087 in][.157 in]

Dimensions

Row-to-Row Spacing	2 mm, 3 mm[.07 in][.11 in]
Product Width	26.8 mm[1.055 in]
Product Length	22 mm[.866 in]
Connector Height	20.9 mm[.823 in]

Usage Conditions

Operating Temperature Range	-30 – 105 °C[-22 – 221 °F]
-----------------------------	----------------------------

Operation/Application

Circuit Application	Signal
---------------------	--------

Packaging Features

Packaging Quantity	100
Packaging Method	Bag

Other

Serviceable	Yes
Connector Position Assurance Capable	No



Product Compliance

For compliance documentation, visit the product page on TE.com>

EU RoHS Directive 2011/65/EU	Compliant
EU ELV Directive 2000/53/EC	Compliant
China RoHS 2 Directive MIIT Order No 32, 2016	No Restricted Materials Above Threshold
EU REACH Regulation (EC) No. 1907/2006	Current ECHA Candidate List: JAN 2025 (247) Candidate List Declared Against: JAN 2025 (247) Does not contain REACH SVHC
Halogen Content	Low Halogen - Br, Cl, F, I < 900 ppm per homogenous material. Also BFR/CFR/PVC Free
Solder Process Capability	Not applicable for solder process capability

Product Compliance Disclaimer

This information is provided based on reasonable inquiry of our suppliers and represents our current actual knowledge based on the information they provided. This information is subject to change. The part numbers that TE has identified as EU RoHS compliant have a maximum concentration of 0.1% by weight in homogenous materials for lead, hexavalent chromium, mercury, PBB, PBDE, DBP, BBP, DEHP, DIBP, and 0.01% for cadmium, or qualify for an exemption to these limits as defined in the Annexes of Directive 2011/65/EU (RoHS2). Finished electrical and electronic equipment products will be CE marked as required by Directive 2011/65/EU. Components may not be CE marked. Additionally, the part numbers that TE has identified as EU ELV compliant have a maximum concentration of 0.1% by weight in homogenous materials for lead, hexavalent chromium, and mercury, and 0.01% for cadmium, or qualify for an exemption to these limits as defined in the Annexes of Directive 2000/53/EC (ELV). Regarding the REACH Regulation, the information TE provides on SVHC in articles for this part number is based on the latest European Chemicals Agency (ECHA) ‘Guidance on requirements for substances in articles’ posted at this URL: <https://echa.europa.eu/guidance-documents/guidance-on-reach>

Compatible Parts



TE Part # 1318763-1
025/090 RETAINER 26P



TE Part # 1-1318751-7
025/090 80POS CAP ASSY H RND



TE Part # 1123343-1
025 REC CONTACT



TE Part # 1-1318750-3
025/090 50 POS CAP ASSY 19 Au

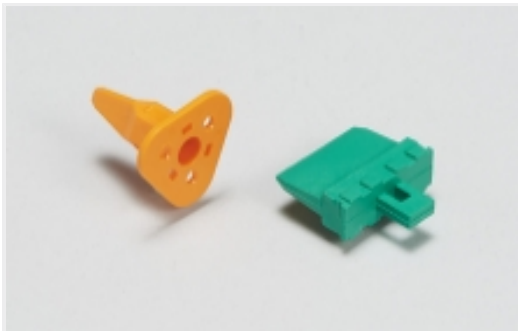


TE Part # CAT-HPCH5372
High Pin Count Header

Also in the Series | 0.64/025 Connector System



Automotive Connector Caps & Covers
(5)



Automotive Connector Locks & Position Assurance(1)



Automotive Headers(148)



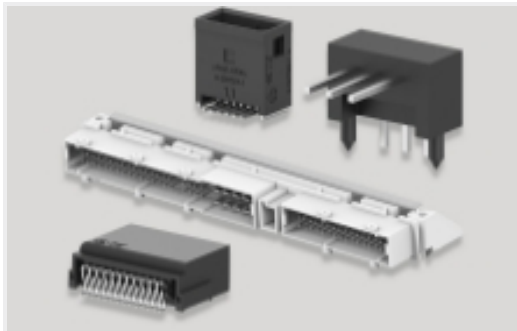
Automotive Housings(117)



Connector Seals & Cavity Plugs(1)



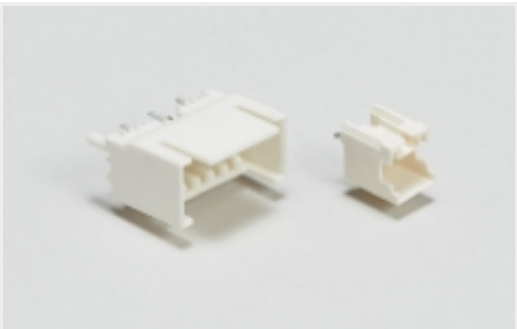
Other Automotive Connector Accessories(4)



PCB Headers & Receptacles(148)



Rectangular Power Connectors(21)

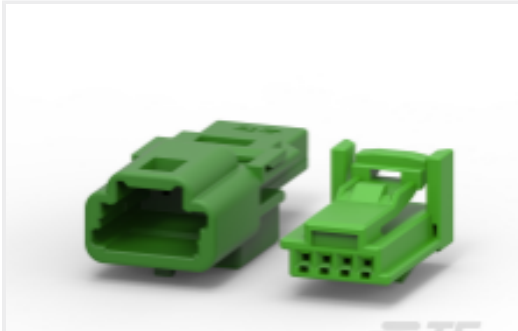


Wire-to-Board Headers & Receptacles
(148)

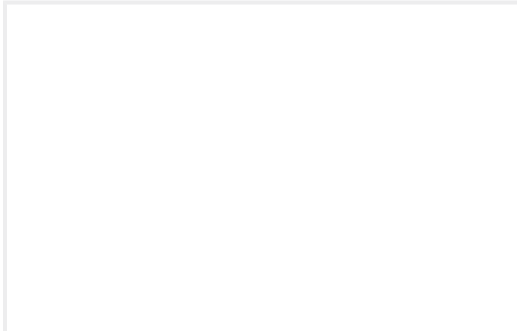
Customers Also Bought



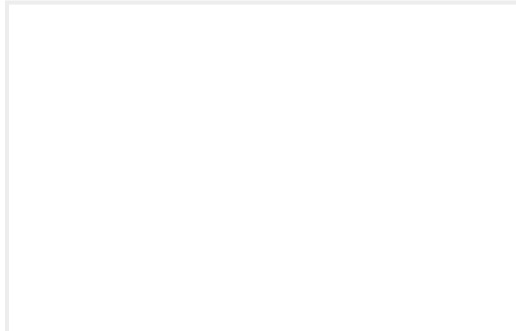
TE Part #1355289-2
MCP9,5BU-GEH2P,GRAU



TE Part #CAT-T319-CH8172
TH/.025 CONNECTOR SYSTEM,
HOUSING



TE Part #2434756-1
MQS RETAINER FOR 2POS REC.HSG,
CONN KIT



TE Part #2434777-1
6POS,MQS,REC HSG





TE Part #2379013-2
[20POS,MQS,REC HSG,UNSLD,COD 2](#)

TE Part #5-2435195-1
[MQS,TERMINAL,CB,064](#)

TE Part #2434823-1
[MCON 1.2,TERMINAL,CB,SWS,SN](#)



TE Part #1318825-7
[AIR BAG PLUG ASSY 6P](#)

Documents

Product Drawings

[025/090 ECU PLUG HSG ASSY 26P](#)

Japanese

CAD Files

[3D PDF](#)

English

Customer View Model

[ENG_CVM_1318757-1_C.2d_dxf.zip](#)

English

Customer View Model

[ENG_CVM_1318757-1_C.3d_igs.zip](#)

English

Customer View Model

[ENG_CVM_1318757-1_C.3d_stp.zip](#)

English

By downloading the CAD file I accept and agree to the [Terms and Conditions](#) of use.

Product Specifications

[Crimping of 025 Receptacle Contact](#)

Japanese

[Application Specification](#)

Japanese

Instruction Sheets

[025/090II I/O Connector](#)

Japanese

[Instruction Sheet \(non U.S.\)](#)

Japanese

[025/090II I/O Connector](#)

Japanese

[Instruction Sheet \(non U.S.\)](#)

Japanese