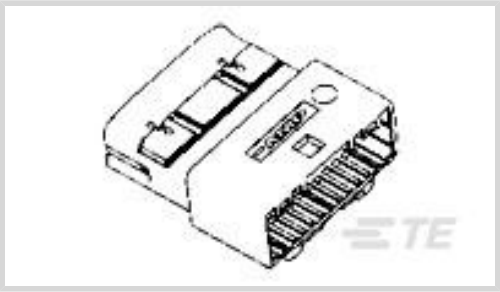




Connectors > Automotive Connectors > Automotive Housings > TH/.025 CONNECTOR SYSTEM, HOUSING



Number of Positions: 24

Connector & Housing Type: **Housing for Male Terminals**

Mating Tab Width: .64 mm [.025 in ]

Connector System: **Wire-to-Wire**

Centerline (Pitch): 2.2 mm [.087 in ]

[All TH/.025 Connector System, Housing \(168\)](#)

Features

Product Type Features

|                          |                            |
|--------------------------|----------------------------|
| Mixed & Hybrid Connector | No                         |
| Connector Shape          | Rectangular                |
| Connector & Housing Type | Housing for Male Terminals |
| Connector System         | Wire-to-Wire               |
| Sealable                 | No                         |
| Primary Locking Feature  | On the Terminal            |

Configuration Features

|                     |    |
|---------------------|----|
| Number of Positions | 24 |
| Number of Rows      | 2  |

Electrical Characteristics

|                              |        |
|------------------------------|--------|
| Operating Voltage            | 12 VDC |
| Nominal Voltage Architecture | 12 V   |

Body Features

|                       |         |
|-----------------------|---------|
| Cable Exit Angle      | 180°    |
| Primary Product Color | Natural |

Contact Features

|              |       |
|--------------|-------|
| Contact Size | .64mm |
|--------------|-------|



|                  |                 |
|------------------|-----------------|
| Contact Type     | Tab             |
| Mating Tab Width | .64 mm[.025 in] |

Mechanical Attachment

|                             |                            |
|-----------------------------|----------------------------|
| Strain Relief               | Without                    |
| Terminal Position Assurance | Yes                        |
| Mating Alignment Type       | Polarization               |
| Mating Alignment            | With                       |
| Connector Mounting Type     | Cable Mount (Free-Hanging) |

Housing Features

|                    |                 |
|--------------------|-----------------|
| Housing Material   | PBT             |
| Centerline (Pitch) | 2.2 mm[.087 in] |

Dimensions

|                    |                   |
|--------------------|-------------------|
| Row-to-Row Spacing | 5.6 mm[.22 in]    |
| Product Width      | 31.8 mm[1.252 in] |
| Product Length     | 33.9 mm[1.335 in] |
| Connector Height   | 15.8 mm[.622 in]  |

Usage Conditions

|                             |   |
|-----------------------------|---|
| Operating Temperature (Max) | 70 °C, 75 °C, 80 °C, 85 °C, 90 °C, 100 °C, 105 °C[158 °F][167 °F][176 °F][185 °F][194 °F][212 °F][221 °F] |
| Operating Temperature Range | -30 – 105 °C[-22 – 221 °F]  |

Operation/Application

|                     |        |
|---------------------|--------|
| Circuit Application | Signal |
|---------------------|--------|

Industry Standards

|                        |         |
|------------------------|---------|
| UL Flammability Rating | UL 94HB |
|------------------------|---------|

Packaging Features

|                    |     |
|--------------------|-----|
| Packaging Quantity | 100 |
| Packaging Method   | Bag |

Other

|                                      |     |
|--------------------------------------|-----|
| Serviceable                          | Yes |
| Connector Position Assurance Capable | No  |



Product Compliance

For compliance documentation, visit the product page on TE.com>

|   |   |
|---|---|
| EU RoHS Directive 2011/65/EU                  | Compliant   |
| EU ELV Directive 2000/53/EC                   | Compliant   |
| China RoHS 2 Directive MIIT Order No 32, 2016 | No Restricted Materials Above Threshold   |
| EU REACH Regulation (EC) No. 1907/2006        | Current ECHA Candidate List: JAN 2025 (247)<br>Candidate List Declared Against: JAN 2025 (247)<br>Does not contain REACH SVHC |
| Halogen Content                               | Low Halogen - Br, Cl, F, I < 900 ppm per homogenous material. Also BFR/CFR/PVC Free   |
| Solder Process Capability                     | Not applicable for solder process capability  |

Product Compliance Disclaimer

This information is provided based on reasonable inquiry of our suppliers and represents our current actual knowledge based on the information they provided. This information is subject to change. The part numbers that TE has identified as EU RoHS compliant have a maximum concentration of 0.1% by weight in homogenous materials for lead, hexavalent chromium, mercury, PBB, PBDE, DBP, BBP, DEHP, DIBP, and 0.01% for cadmium, or qualify for an exemption to these limits as defined in the Annexes of Directive 2011/65/EU (RoHS2). Finished electrical and electronic equipment products will be CE marked as required by Directive 2011/65/EU. Components may not be CE marked. Additionally, the part numbers that TE has identified as EU ELV compliant have a maximum concentration of 0.1% by weight in homogenous materials for lead, hexavalent chromium, and mercury, and 0.01% for cadmium, or qualify for an exemption to these limits as defined in the Annexes of Directive 2000/53/EC (ELV). Regarding the REACH Regulation, the information TE provides on SVHC in articles for this part number is based on the latest European Chemicals Agency (ECHA) ‘Guidance on requirements for substances in articles’ posted at this URL: <https://echa.europa.eu/guidance-documents/guidance-on-reach>

Compatible Parts



TE Part # 1376109-1  
025 TAB CONT

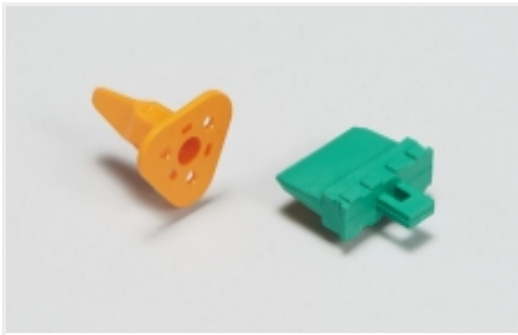


TE Part # CAT-T319-CH8172  
TH/.025 CONNECTOR SYSTEM,  
HOUSING

Also in the Series | 0.64/025 Connector System



Automotive Connector Caps & Covers (5)



Automotive Connector Locks & Position Assurance (1)



Automotive Housings (117)



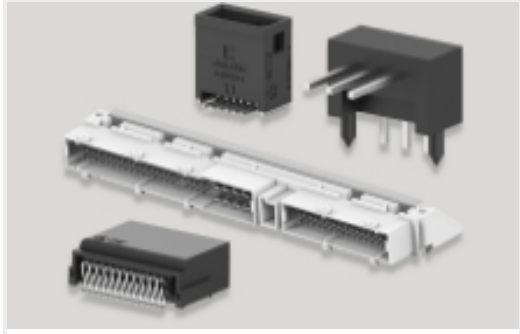
Automotive Terminals (17)



Connector Seals & Cavity Plugs (1)



Other Automotive Connector Accessories (4)

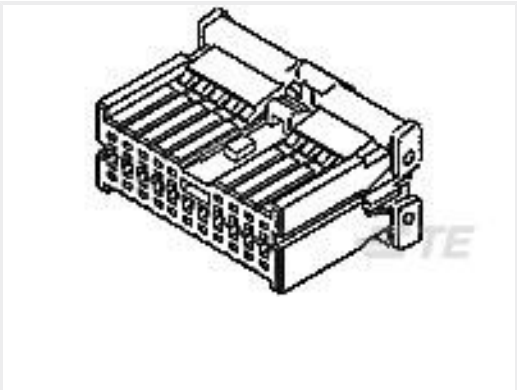


PCB Headers & Receptacles (148)

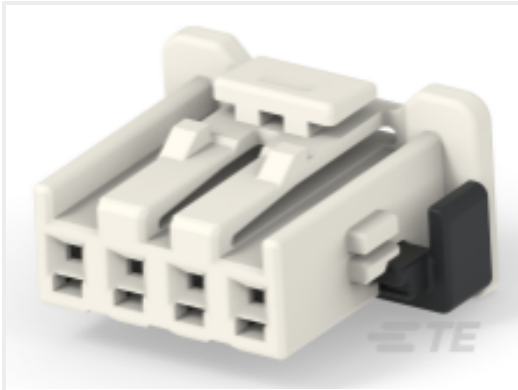


Rectangular Power Connectors (21)

Customers Also Bought



TE Part #1123371-1  
040-3 MLC PLUG HSG ASSY 16P



TE Part #2337737-1  
4POS,0.64 SERIES,REC HSG ASSY, COD A



TE Part #1742087-1  
187 FASTON,FLAG,REC.,18-22 AWG, BR



TE Part #CAT-T319-CH8172  
TH/.025 CONNECTOR SYSTEM, HOUSING



TE Part #1-1418773-1  
32pos MQS .63 header 180deg THR

Documents

Product Drawings  
025 CONN CAP ASSY 24P  
English

CAD Files  
Customer View Model  
ENG\_CVM\_1376103-1\_A2.3d\_igs.zip  
English  
Customer View Model



[ENG\\_CVM\\_1376103-1\\_A2.3d\\_stp.zip](#)

English

**Customer View Model**

[ENG\\_CVM\\_1376103-1\\_A2.2d\\_dxf.zip](#)

English

**3D PDF**

English

By downloading the CAD file I accept and agree to the [Terms and Conditions](#) of use.

**Product Specifications**

**Application Specification**

Japanese

**Instruction Sheets**

**Instruction Sheet (non U.S.)**

Japanese

**025 Wire to Wire Connector**

Japanese

**Instruction Sheet (non U.S.)**

Japanese

**025 Wire to Wire Connector**

Japanese