



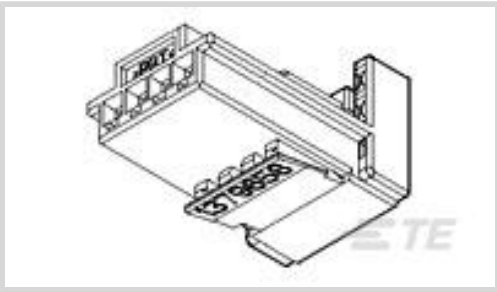
TH/.025 Connector System

TE Internal #: 1379658-1

4 Position Housing, Housing for Female Terminals, Wire-to-Wire, 2.2 mm [.08 in] Centerline, Black, Wire & Cable, Signal, TH/.025 Connector System

[View on TE.com >](#)

Connectors > Automotive Connectors > Automotive Housings > TH/.025 CONNECTOR SYSTEM, HOUSING



Number of Positions: 4

Connector & Housing Type: **Housing for Female Terminals**

Mating Tab Width: .64 mm [.02 in]

Connector System: **Wire-to-Wire**

Centerline (Pitch): 2.2 mm [.08 in]

[All TH/.025 CONNECTOR SYSTEM, HOUSING \(168\)](#)

Features

Product Type Features

Mixed & Hybrid Connector	No
Connector Shape	Rectangular
Connector & Housing Type	Housing for Female Terminals
Connector System	Wire-to-Wire
Sealable	No
Primary Locking Feature	On the Terminal
Connector & Contact Terminates To	Wire & Cable

Configuration Features

Number of Positions	4
Number of Rows	1

Electrical Characteristics

Operating Voltage	14 VDC
-------------------	--------

Body Features

Cable Exit Angle	180°
Primary Product Color	Black
Connector & Keying Code	1



Contact Features

Contact Size	.64mm
Contact Type	Receptacle
Mating Tab Width	.64 mm[.02 in]

Mechanical Attachment

Strain Relief	Without
Terminal Position Assurance	Yes
Mating Alignment Type	Keyed
Mating Alignment	With
Connector Mounting Type	Cable Mount (Free-Hanging)

Housing Features

Housing Material	PBT
Centerline (Pitch)	2.2 mm[.08 in]

Dimensions

Product Width	19 mm[.748 in]
Product Length	11.8 mm[.465 in]
Connector Height	10.05 mm[.396 in]

Usage Conditions

Operating Temperature (Max)	100 °C[212 °F]
Operating Temperature Range	-40 – 100 °C[-40 – 212 °F]

Operation/Application

Circuit Application	Signal
---------------------	--------

Industry Standards

UL Flammability Rating	UL 94HB
------------------------	---------

Packaging Features

Packaging Method	Bag
Packaging Quantity	900

Other

Serviceable	Yes
Connector Position Assurance Capable	No

Product Compliance



For compliance documentation, visit the product page on TE.com>

EU RoHS Directive 2011/65/EU	Compliant
EU ELV Directive 2000/53/EC	Compliant
China RoHS 2 Directive MIIT Order No 32, 2016	No Restricted Materials Above Threshold
EU REACH Regulation (EC) No. 1907/2006	Current ECHA Candidate List: JAN 2025 (247) Candidate List Declared Against: JAN 2025 (247) Does not contain REACH SVHC
Halogen Content	Low Halogen - Br, Cl, F, I < 900 ppm per homogenous material. Also BFR/CFR/PVC Free
Solder Process Capability	Not reviewed for solder process capability

Product Compliance Disclaimer

This information is provided based on reasonable inquiry of our suppliers and represents our current actual knowledge based on the information they provided. This information is subject to change. The part numbers that TE has identified as EU RoHS compliant have a maximum concentration of 0.1% by weight in homogenous materials for lead, hexavalent chromium, mercury, PBB, PBDE, DBP, BBP, DEHP, DIBP, and 0.01% for cadmium, or qualify for an exemption to these limits as defined in the Annexes of Directive 2011/65/EU (RoHS2). Finished electrical and electronic equipment products will be CE marked as required by Directive 2011/65/EU. Components may not be CE marked. Additionally, the part numbers that TE has identified as EU ELV compliant have a maximum concentration of 0.1% by weight in homogenous materials for lead, hexavalent chromium, and mercury, and 0.01% for cadmium, or qualify for an exemption to these limits as defined in the Annexes of Directive 2000/53/EC (ELV). Regarding the REACH Regulation, the information TE provides on SVHC in articles for this part number is based on the latest European Chemicals Agency (ECHA) 'Guidance on requirements for substances in articles' posted at this URL: <https://echa.europa.eu/guidance-documents/guidance-on-reach>

Compatible Parts



TE Part # 1802822-1
4POS,TAB0.63X0.63,HDR ASSY,
180DEG,COD 1



TE Part # CAT-SIGH262
Signal Header

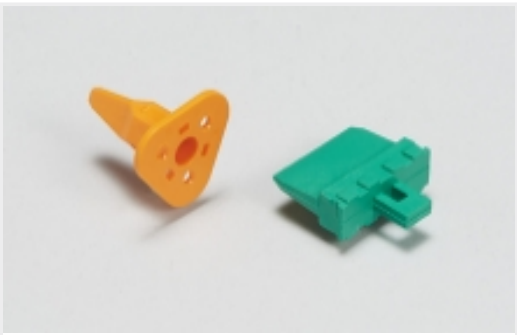


TE Part # CAT-T319-T273
TH/.025 CONNECTOR SYSTEM,
RECPT AND TAB



TE Part # 1379674-1
4W TAB HSG CODING 1 BLACK

Also in the Series | TH/.025 Connector System



Automotive Connector Locks & Position Assurance(1)



Automotive Headers(5)



Automotive Housings(60)



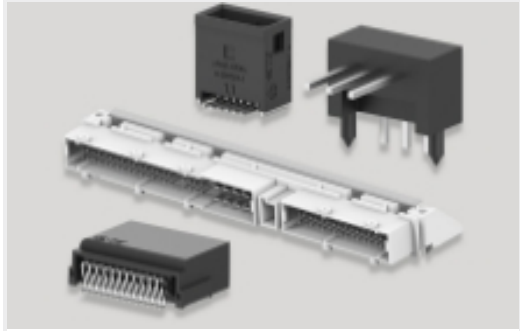
Automotive Terminals(4)



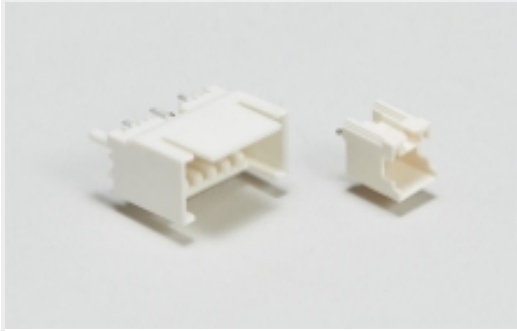
Insertion & Extraction Tools(4)



Other Automotive Connector Accessories(1)

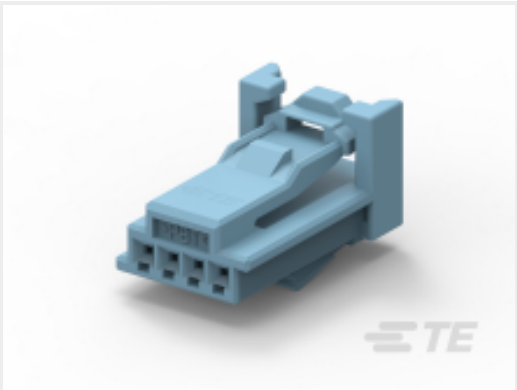


PCB Headers & Receptacles(5)



Wire-to-Board Headers & Receptacles (5)

Customers Also Bought



TE Part #1379658-3
4W RCPT HSG CODING 3 BLUE



TE Part #1379095-3
COV+LEV MQS 12W 0DEG BLAC



TE Part #1456983-2
1X4 Fem unsealed LP assy Key A w /CPA

TE Part #3-1768078-4
LBF-79208479E

TE Part #8-1768344-0
LBF-79296558A

TE Part #5-1768307-5
LBF-79292097C



TE Part #1-1418790-1
COVER,MQS,2X4POSN.

TE Part #4-1768381-1
LBF-79296140B

TE Part #1768083-1
LBF-79292096C



TE Part #1-144546-0
3 POS HSG SEALING MK IV

Documents



Product Drawings

4W RCPT HSG CODING 1 BLAC

English

CAD Files

3D PDF

3D

Customer View Model

ENG_CVM_CVM_1379658-1_A.2d_dxf.zip

English

Customer View Model

ENG_CVM_CVM_1379658-1_A.3d_igs.zip

English

Customer View Model

ENG_CVM_CVM_1379658-1_A.3d_stp.zip

English

By downloading the CAD file I accept and agree to the [Terms and Conditions](#) of use.

Product Specifications

Product Specification

English

Packaging specification for TH Tab en Plug (TH TES)

English

Instruction Sheets

Instruction Sheet (non U.S.)

English