

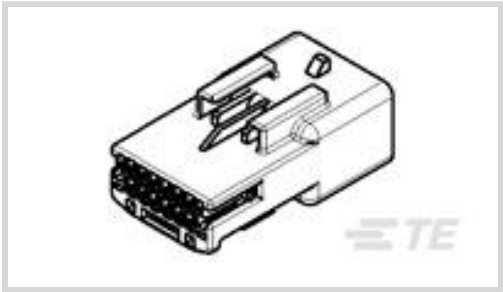


TH/.025 Connector System

TE Internal #: 1379675-1
12 Position Housing, Housing for Male Terminals, Wire-to-Wire, 2.2 mm [.08 in] Centerline, Black, Wire & Cable, Signal, TH/.025 Connector System

[View on TE.com >](#)

Connectors > Automotive Connectors > Automotive Housings > TH/.025 CONNECTOR SYSTEM, HOUSING



Number of Positions: 12
Connector & Housing Type: Housing for Male Terminals
Mating Pin Diameter: .64 mm [.02 in]
Connector System: Wire-to-Wire
Centerline (Pitch): 2.2 mm [.08 in]

All TH/.025 Connector System, Housing (168)

Features

Product Type Features

Mixed & Hybrid Connector	No
Connector Shape	Rectangular
Connector & Housing Type	Housing for Male Terminals
Connector System	Wire-to-Wire
Sealable	No
Primary Locking Feature	On the Terminal
Connector & Contact Terminates To	Wire & Cable

Configuration Features

Number of Positions	12
Number of Rows	2

Electrical Characteristics

Operating Voltage	14 VDC
-------------------	--------

Body Features

Cable Exit Angle	180°
Primary Product Color	Black
Connector & Keying Code	1



Contact Features

Contact Size	.63mm
Contact Type	Tab
Mating Pin Diameter	.64 mm[.02 in]

Mechanical Attachment

Strain Relief	Without
Terminal Position Assurance	Yes
Mating Alignment Type	Keyed
Mating Alignment	With
Connector Mounting Type	Cable Mount (Free-Hanging)

Housing Features

Housing Material	PBT
Centerline (Pitch)	2.2 mm[.08 in]

Dimensions

Row-to-Row Spacing	3 mm[.118 in]
Product Width	33.9 mm[1.335 in]
Product Length	18.6 mm[.732 in]
Connector Height	14.7 mm[.579 in]

Usage Conditions

Operating Temperature (Max)	100 °C[212 °F]
Operating Temperature Range	-40 – 100 °C[-40 – 212 °F]

Operation/Application

Circuit Application	Signal
---------------------	--------

Industry Standards

UL Flammability Rating	UL 94HB
------------------------	---------

Packaging Features

Packaging Quantity	1200
Packaging Method	Box

Other

Serviceable	Yes
Connector Position Assurance Capable	No



Product Compliance

For compliance documentation, visit the product page on TE.com>

EU RoHS Directive 2011/65/EU	Compliant
EU ELV Directive 2000/53/EC	Compliant
China RoHS 2 Directive MIIT Order No 32, 2016	No Restricted Materials Above Threshold
EU REACH Regulation (EC) No. 1907/2006	Current ECHA Candidate List: JAN 2025 (247) Candidate List Declared Against: JAN 2025 (247) Does not contain REACH SVHC
Halogen Content	Low Halogen - Br, Cl, F, I < 900 ppm per homogenous material. Also BFR/CFR/PVC Free
Solder Process Capability	Not reviewed for solder process capability

Product Compliance Disclaimer

This information is provided based on reasonable inquiry of our suppliers and represents our current actual knowledge based on the information they provided. This information is subject to change. The part numbers that TE has identified as EU RoHS compliant have a maximum concentration of 0.1% by weight in homogenous materials for lead, hexavalent chromium, mercury, PBB, PBDE, DBP, BBP, DEHP, DIBP, and 0.01% for cadmium, or qualify for an exemption to these limits as defined in the Annexes of Directive 2011/65/EU (RoHS2). Finished electrical and electronic equipment products will be CE marked as required by Directive 2011/65/EU. Components may not be CE marked. Additionally, the part numbers that TE has identified as EU ELV compliant have a maximum concentration of 0.1% by weight in homogenous materials for lead, hexavalent chromium, and mercury, and 0.01% for cadmium, or qualify for an exemption to these limits as defined in the Annexes of Directive 2000/53/EC (ELV). Regarding the REACH Regulation, the information TE provides on SVHC in articles for this part number is based on the latest European Chemicals Agency (ECHA) 'Guidance on requirements for substances in articles' posted at this URL: <https://echa.europa.eu/guidance-documents/guidance-on-reach>

Compatible Parts

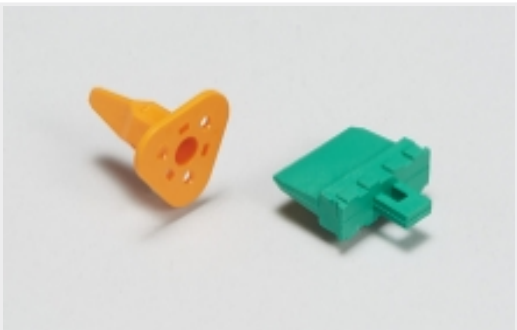


TE Part # CAT-T319-T273
TH/.025 CONNECTOR SYSTEM,
RECPT AND TAB



TE Part # 1379662-1
12W PLUG HSG ASSY BLACK

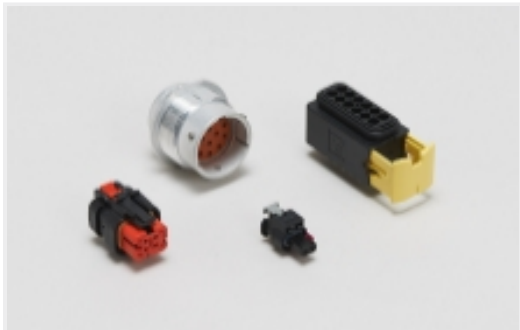
Also in the Series | TH/.025 Connector System



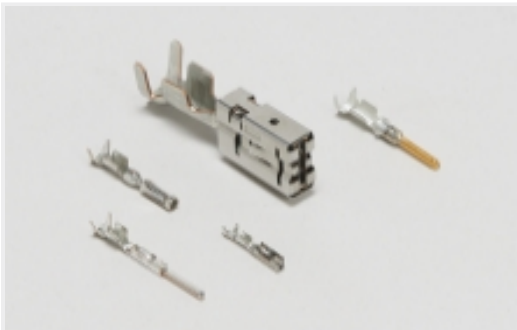
Automotive Connector Locks & Position Assurance(1)



Automotive Headers(5)



Automotive Housings(60)



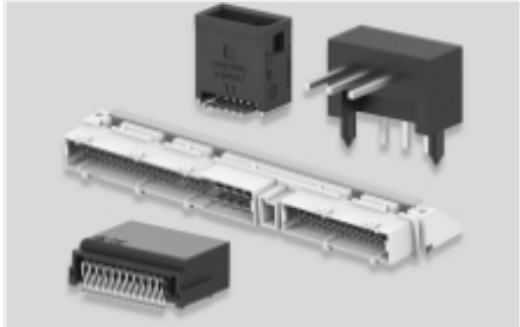
Automotive Terminals(4)



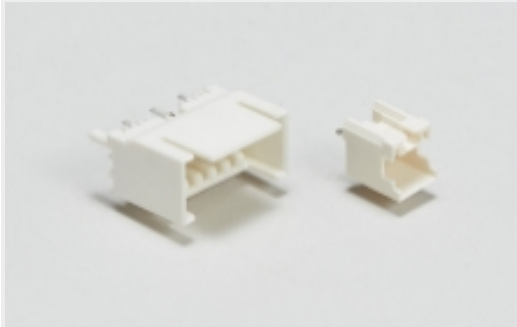
Insertion & Extraction Tools(4)



Other Automotive Connector Accessories(1)



PCB Headers & Receptacles(5)

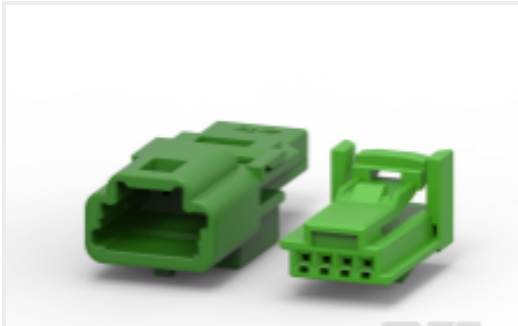


Wire-to-Board Headers & Receptacles (5)

Customers Also Bought



TE Part #1-1718643-4
2POS, MCON 1.2 LL REC SEALED



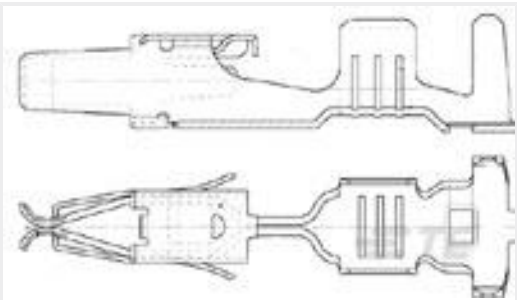
TE Part #CAT-T319-CH8172
TH/.025 CONNECTOR SYSTEM, HOUSING



TE Part #1802190-1
TAB0.64X0.64,TERMINAL



TE Part #0021036033
RBK-ILS-125-NR3-0-25MM



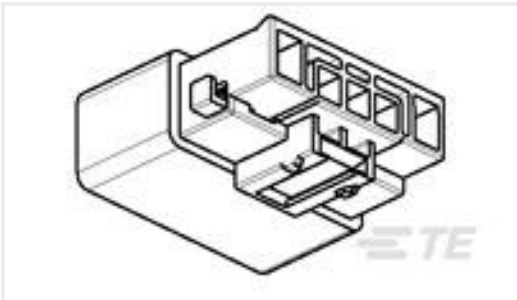
TE Part #185027-1
JPT F REC 2.8 Contact SWS Sn



TE Part #2141864-1
MCON 1.2 LL TAB STC SN



TE Part #626064-5
ISOLADOR



TE Part #1599314-1
HSG ASSY 5P TAB JPT/SPT HYBRID



TE Part #2392417-1
187 PL MII,REC.,22-18 AWG,PTBR

Documents



Product Drawings

12W TAB HSG ASSY BLACK

English

CAD Files

3D PDF

3D

Customer View Model

ENG_CVM_CVM_1379675-1_A_c-1379675-1-a.2d_dxf.zip

English

Customer View Model

ENG_CVM_CVM_1379675-1_A_c-1379675-1-a.3d_igs.zip

English

Customer View Model

ENG_CVM_CVM_1379675-1_A_c-1379675-1-a.3d_stp.zip

English

By downloading the CAD file I accept and agree to the [Terms and Conditions](#) of use.

Product Specifications

Product Specification

English

Packaging specification for TH Tab en Plug (TH TES)

English

Instruction Sheets

Instruction Sheet (non U.S.)

English