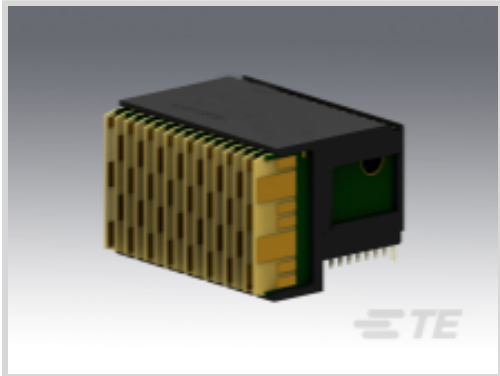




Connectors > PCB Connectors > Backplane Connectors > High Speed Backplane Connectors



Number of Positions: 112  
Row-to-Row Spacing: 1.35 mm [ .053 in ]  
Mating Alignment: With  
Mating Alignment Type: Polarization  
Number of Rows: 7

Features

Product Type Features

Connector & Contact Terminates To	Printed Circuit Board
Compatible with PCB Type	Daughtercard
Connector System	Board-to-Board
PCB Connector Type	PCB Mount Header
Shroud Style	Fully Shrouded

Configuration Features

Backplane Architecture	Traditional Backplane
Card Slot Centerline	20.3 mm[.8 in]
Number of Positions	112
Number of Rows	7
Number of Columns	16
PCB Mount Orientation	Right Angle
Guide Location	Center

Contact Features

Contact Current Rating (Max)	1 A
------------------------------	-----

Mechanical Attachment

Mating Alignment	With
Mating Alignment Type	Polarization



Connector Mounting Type	Board Mount
-------------------------	-------------

Housing Features

Number of Shrouded Sides	2
Centerline (Pitch)	1.8 mm[.071 in]

Dimensions

Row-to-Row Spacing	1.35 mm[.053 in]
--------------------	------------------

Usage Conditions

Operating Temperature Range	-55 – 105 °C[-67 – 221 °F]
-----------------------------	----------------------------

Operation/Application

Circuit Application	Power & Signal
---------------------	----------------

Product Compliance

For compliance documentation, visit the product page on TE.com>

EU RoHS Directive 2011/65/EU	Not Compliant
EU ELV Directive 2000/53/EC	Compliant with Exemptions
China RoHS 2 Directive MIIT Order No 32, 2016	Restricted Materials Above Threshold
EU REACH Regulation (EC) No. 1907/2006	Current ECHA Candidate List: JAN 2025 (247) Candidate List Declared Against: JAN 2025 (247) SVHC > Threshold: Pb (13% in 4690948374) <small>Article Safe Usage Statements: Do not eat, drink or smoke when using this product. Wash thoroughly after handling. Recycle if possible and dispose of the article by following all applicable governmental regulations relevant to your geographic location.</small>
Halogen Content	BFR/CFR/PVC Free, but Br/Cl >900 ppm in other sources.
Solder Process Capability	Not applicable for solder process capability

Product Compliance Disclaimer

This information is provided based on reasonable inquiry of our suppliers and represents our current actual knowledge based on the information they provided. This information is subject to change. The part numbers that TE has identified as EU RoHS compliant have a maximum concentration of 0.1% by weight in homogenous materials for lead, hexavalent chromium, mercury, PBB, PBDE, DBP, BBP, DEHP, DIBP, and 0.01% for cadmium, or qualify for an exemption to these limits as defined in the Annexes of Directive 2011/65/EU (RoHS2). Finished electrical and electronic equipment products will be CE marked as required by Directive 2011/65/EU. Components may not be CE marked. Additionally, the part numbers that TE has identified as EU ELV compliant have a maximum concentration of 0.1% by weight in homogenous materials for lead, hexavalent chromium, and mercury, and 0.01% for cadmium, or qualify for an exemption to these limits as defined in the Annexes of Directive 2000/53/EC (ELV). Regarding the REACH Regulation, the information TE provides on SVHC in articles for this part number is based on the latest European Chemicals Agency (ECHA) ‘Guidance on requirements for substances in articles’ posted at this URL: <https://echa.europa.eu/guidance-documents/guidance-on-reach>



Compatible Parts

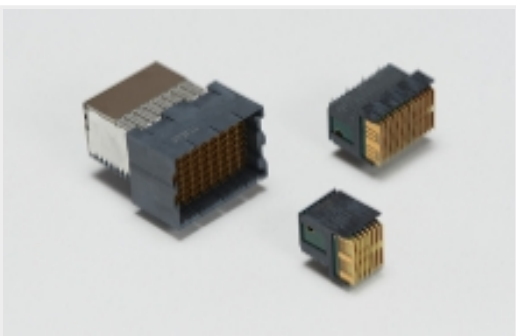


TE Part # 2000676-1  
Keyed Guide Pin, Machined, Vita 46



TE Part # 2000713-1  
RA Keyed Guide Mod, Vita 46, Machined

Also in the Series | MULTIGIG RT 2



High Speed Backplane Connectors(39)

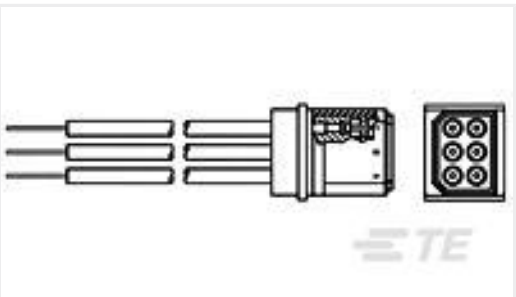
Customers Also Bought



TE Part #CAT-AM7017-H8172  
AMP COMMON TERMINATION HOUSINGS



TE Part #2-5767004-7  
MICTOR RECEPT ASSY, 228 POS.



TE Part #443832-1  
LGH 6 PIN RECPT,RT ANGLE



TE Part #2-5767004-6  
MICTOR RECEPT ASSY, 190 POS.



TE Part #1410188-1  
MULTIGIG RT T2 7RW DC DF F-RGT



TE Part #NB14254001  
VERSAFIT-1-0-FSP



TE Part #1-1469492-1  
MULTIGIG RT 9MM GUIDE/ESD 0 DEG



TE Part #1410189-3  
MULTIGIG RT T2 7RW H-LFT,ET2



Documents

Product Drawings

MULTIGIG RT T2 7RW DC DF CT

English

CAD Files

3D PDF

3D

Customer View Model

ENG\_CVM\_CVM\_1410187-1\_E.2d\_dxf.zip

English

Customer View Model

ENG\_CVM\_CVM\_1410187-1\_E.3d\_igs.zip

English

Customer View Model

ENG\_CVM\_CVM\_1410187-1\_E.3d\_stp.zip

English

By downloading the CAD file I accept and agree to the [Terms and Conditions](#) of use.

Product Specifications

Application Specification

English

Instruction Sheets

Instruction Sheet (U.S.)

English