



MULTIGIG RT

TE Internal #: 1410278-2
2 Position Backplane Power Connector, PCB Mount Receptacle,
Board-to-Board, Vertical, Orthogonal, 3.6 mm [.141 in] Centerline,
Printed Circuit Board

[View on TE.com >](#)

Connectors > Power Connectors > Backplane Power Connectors



Number of Positions: 2
PCB Connector Type: **PCB Mount Receptacle**
Connector System: **Board-to-Board**
PCB Mount Orientation: **Vertical**
Backplane Architecture: **Orthogonal**

Features

Product Type Features

PCB Connector Type	PCB Mount Receptacle
Connector System	Board-to-Board
Connector & Contact Terminates To	Printed Circuit Board

Configuration Features

Number of Columns	2
Number of Power Positions	2
Number of Signal Positions	0
Number of Rows	11
Number of Positions	2
PCB Mount Orientation	Vertical
Backplane Architecture	Orthogonal
Stackable	No

Electrical Characteristics

Operating Voltage	250 VDC
-------------------	---------



Contact Features

PCB Contact Termination Area Plating Material Thickness	1.27 μm[50 μin]
Contact Mating Area Plating Material	Gold (Au)
Contact Base Material	Copper Alloy
PCB Contact Termination Area Plating Material	Tin
PCB Contact Termination Area Plating Material Finish	Matte
Contact Type	Socket
Contact Mating Area Plating Material Thickness	1.27 μm
Contact Length	13.7 mm
Contact Current Rating (Max)	20 A

Termination Features

Termination Post & Tail Length	3.5 mm
Termination Method to PCB	Through Hole - Press-Fit

Mechanical Attachment

PCB Mount Retention Type	Action/Compliant Tail
Mating Alignment Type	Polarization
Mating Alignment	With
PCB Mount Retention	With
Connector Mounting Type	Board Mount

Housing Features

Housing Color	Black
Housing Material	LCP
Centerline (Pitch)	3.6 mm[.141 in]

Dimensions

Product Width	15.25 mm
Product Length	29.59 mm
PCB Thickness (Recommended)	1.4 mm
Connector Height	16.25 mm
PCB Hole Diameter	.61 mm

Usage Conditions

Operating Temperature Range	-55 – 105 °C[-67 – 221 °F]
-----------------------------	----------------------------

Operation/Application



Circuit Application	Power
---------------------	-------

Industry Standards

UL Flammability Rating	UL 94V-0
------------------------	----------

Packaging Features

Packaging Method	Tube
------------------	------

Product Compliance

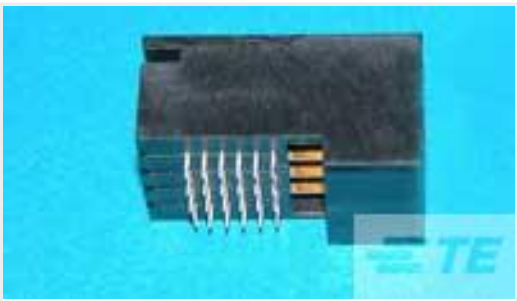
For compliance documentation, visit the product page on TE.com>

EU RoHS Directive 2011/65/EU	Compliant
EU ELV Directive 2000/53/EC	Compliant
China RoHS 2 Directive MIIT Order No 32, 2016	No Restricted Materials Above Threshold
EU REACH Regulation (EC) No. 1907/2006	Current ECHA Candidate List: JAN 2025 (247) Candidate List Declared Against: JAN 2025 (247) Does not contain REACH SVHC
Halogen Content	Low Halogen - Br, Cl, F, I < 900 ppm per homogenous material. Also BFR/CFR/PVC Free
Solder Process Capability	Not applicable for solder process capability

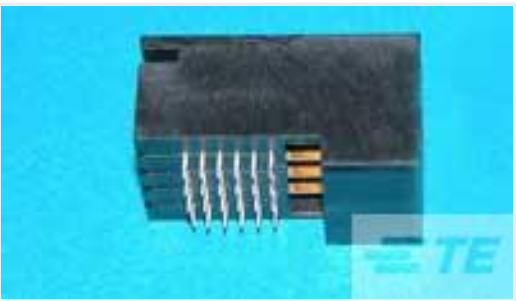
Product Compliance Disclaimer

This information is provided based on reasonable inquiry of our suppliers and represents our current actual knowledge based on the information they provided. This information is subject to change. The part numbers that TE has identified as EU RoHS compliant have a maximum concentration of 0.1% by weight in homogenous materials for lead, hexavalent chromium, mercury, PBB, PBDE, DBP, BBP, DEHP, DIBP, and 0.01% for cadmium, or qualify for an exemption to these limits as defined in the Annexes of Directive 2011/65/EU (RoHS2). Finished electrical and electronic equipment products will be CE marked as required by Directive 2011/65/EU. Components may not be CE marked. Additionally, the part numbers that TE has identified as EU ELV compliant have a maximum concentration of 0.1% by weight in homogenous materials for lead, hexavalent chromium, and mercury, and 0.01% for cadmium, or qualify for an exemption to these limits as defined in the Annexes of Directive 2000/53/EC (ELV). Regarding the REACH Regulation, the information TE provides on SVHC in articles for this part number is based on the latest European Chemicals Agency (ECHA) ‘Guidance on requirements for substances in articles’ posted at this URL: <https://echa.europa.eu/guidance-documents/guidance-on-reach>

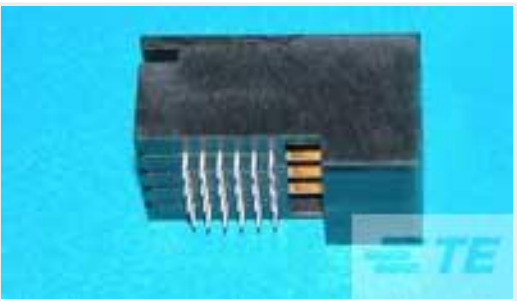
Compatible Parts



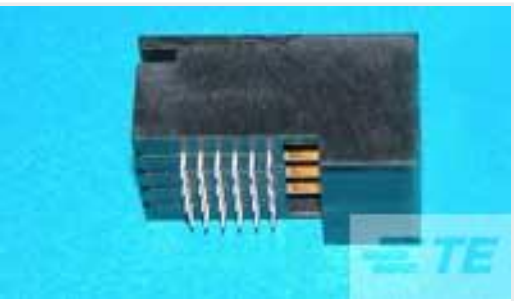
TE Part # 1-1410279-0
MULTIGIG RT PWR .8" R/A HDR 2P
PBFR



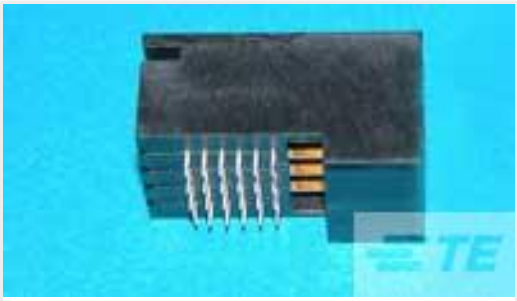
TE Part # 1-1410279-2
MULTIGIG RT PWR .8" R/A HDR 2P
PBFR



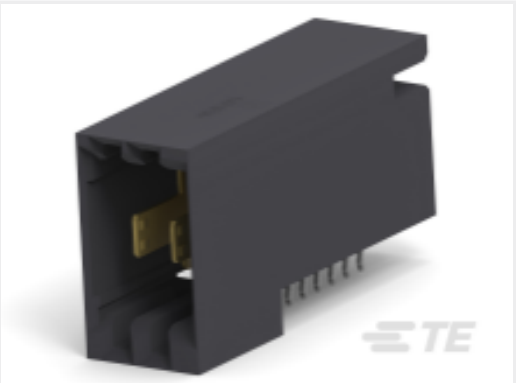
TE Part # 1410279-8
MULTIGIG RT PWR .8" R/A HDR 2P
PBFR



TE Part # 1410279-9
MULTIGIG RT PWR .8" R/A HDR 2P
PBFR

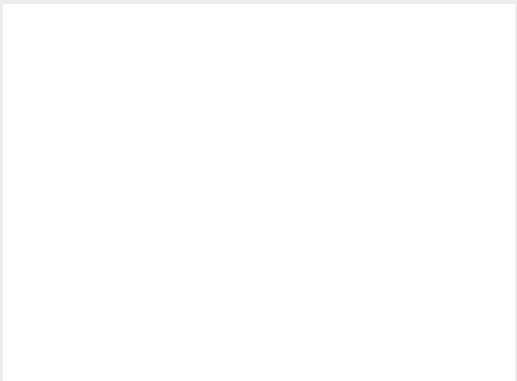


TE Part # 1-1410279-1
MULTIGIG RT PWR .8" R/A HDR 2P
PBFR

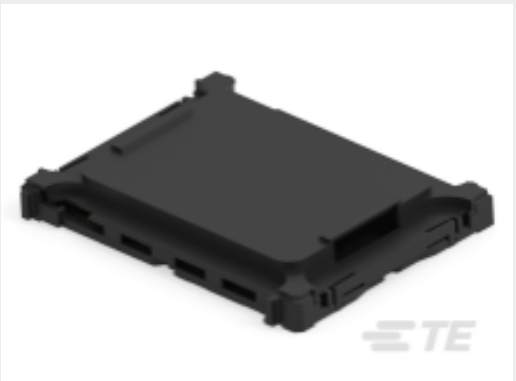


TE Part # 1410279-7
MULTIGIG RT PWR .8" R/A HDR 2P
PBFR

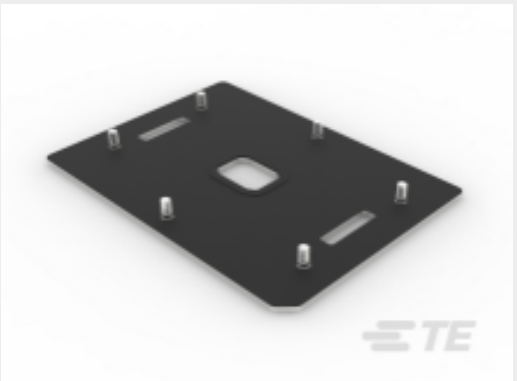
Customers Also Bought



TE Part #2407532-6
HD+ CE, RA, MCRPS



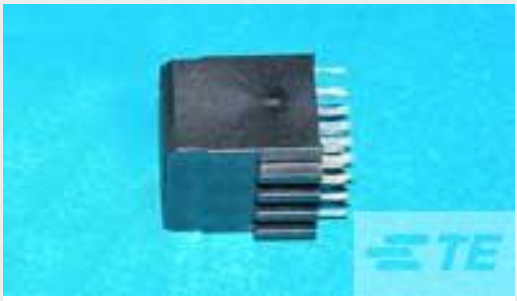
TE Part #2-2347090-1
SOCKET 4677 DG1.0 FOR ODM



TE Part #2-2330551-1
SOCKET P4/P5 BACKPLATE ASSY,
STUD 6.02MM



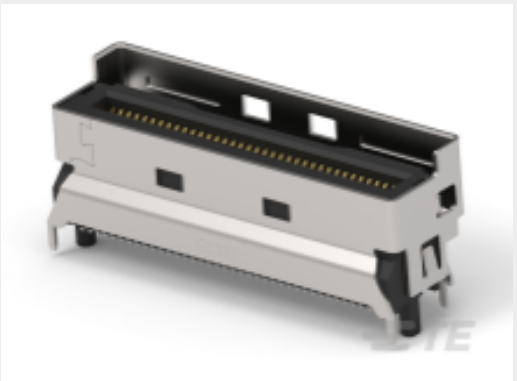
TE Part #2-2330550-1
SOCKET P4 BOLSTER PLATE ASSY, W
/O COVER



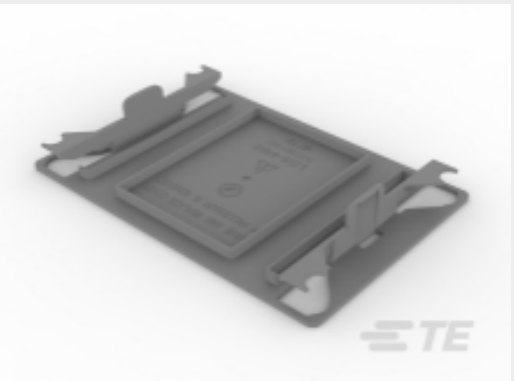
TE Part #1410270-2
MULTIGIG RT PWR .8" VRT RCP 4P
PBFR



TE Part #2344604-5
50 AMP CARD EDGE ASSEMBLY



TE Part #1-2379397-5
MCIO INTERGRATED CONN, V/T,8X,
SMT TYPE



TE Part #2-2330553-1
SOCKET P4/P5 DUST COVER,
LGA4189



TE Part #1-2351053-2
LGA4677 SOCKET COVER



TE Part #2351051-1
LGA4677 BACKPLATE ASSY,SHORT
STUD

Documents



Product Drawings

MULTIGIG RT PWR .8" VRT RCP 2P PBFR

English

CAD Files

Customer View Model

ENG_CVM_CVM_1410278-2_B.2d_dxf.zip

English

3D PDF

3D

Customer View Model

ENG_CVM_CVM_1410278-2_B.3d_igs.zip

English

Customer View Model

ENG_CVM_CVM_1410278-2_B.3d_stp.zip

English

By downloading the CAD file I accept and agree to the [Terms and Conditions](#) of use.

Datasheets & Catalog Pages

POWER_CONNECTORS_CATALOG_SEC01_BOARD_TO_BOARD

English

2_PIECE_POWER_CONNECTORS_qrg_4-1773458-1

English

Product Specifications

Application Specification

English

Agency Approvals

UL

English