



Connectors > Connector Accessories > Connector Hardware



Connector Hardware Accessory Type: **Guide Pin**

Primary Product Material: **Zinc Alloy**

Operating Temperature (Max): **105 °C [221 °F]**

Operating Temperature Range: **-55 – 105 °C [-67 – 221 °F]**

Hardware Accessory Function: **Guide Hardware**

Features

Product Type Features

Connector Hardware Accessory Type	Guide Pin
Hardware Accessory Function	Guide Hardware

Body Features

Primary Product Plating Material	Silver
Primary Product Material	Zinc Alloy

Dimensions

Thread Length	5.5 mm[.216 in]
Product Feature Length	26.6 mm[1.04 in]

Usage Conditions

Operating Temperature (Max)	105 °C[221 °F]
Operating Temperature Range	-55 – 105 °C[-67 – 221 °F]

Packaging Features

Packaging Method	Package
Packaging Quantity	1



Product Compliance


For compliance documentation, visit the product page on TE.com>

EU RoHS Directive 2011/65/EU	Compliant
EU ELV Directive 2000/53/EC	Compliant
China RoHS 2 Directive MIIT Order No 32, 2016	No Restricted Materials Above Threshold
EU REACH Regulation (EC) No. 1907/2006	Current ECHA Candidate List: JAN 2025 (247) Candidate List Declared Against: JAN 2025 (247) Does not contain REACH SVHC
Halogen Content	Low Halogen - Br, Cl, F, I < 900 ppm per homogenous material. Also BFR/CFR/PVC Free
Solder Process Capability	Not applicable for solder process capability


Product Compliance Disclaimer

This information is provided based on reasonable inquiry of our suppliers and represents our current actual knowledge based on the information they provided. This information is subject to change. The part numbers that TE has identified as EU RoHS compliant have a maximum concentration of 0.1% by weight in homogenous materials for lead, hexavalent chromium, mercury, PBB, PBDE, DBP, BBP, DEHP, DIBP, and 0.01% for cadmium, or qualify for an exemption to these limits as defined in the Annexes of Directive 2011/65/EU (RoHS2). Finished electrical and electronic equipment products will be CE marked as required by Directive 2011/65/EU. Components may not be CE marked. Additionally, the part numbers that TE has identified as EU ELV compliant have a maximum concentration of 0.1% by weight in homogenous materials for lead, hexavalent chromium, and mercury, and 0.01% for cadmium, or qualify for an exemption to these limits as defined in the Annexes of Directive 2000/53/EC (ELV). Regarding the REACH Regulation, the information TE provides on SVHC in articles for this part number is based on the latest European Chemicals Agency (ECHA) ‘Guidance on requirements for substances in articles’ posted at this URL: <https://echa.europa.eu/guidance-documents/guidance-on-reach>


Customers Also Bought




TE Part #1-2000713-2
RA Keyed Guide Mod, Vita 46,
Machined



TE Part #2327671-3
RECEPT ASSY, RA, 84 POS, SLIVER 2.0



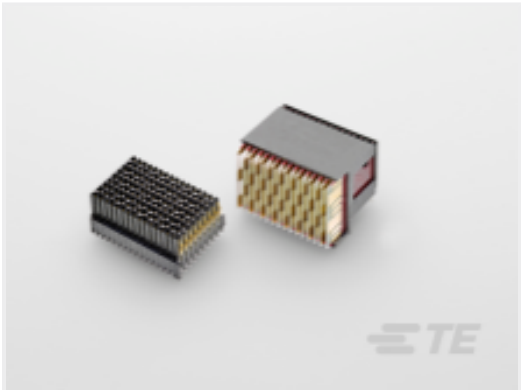
TE Part #2102735-1
BP, Half Left End, MULTIGIG RT 2R



TE Part #2102736-1
BP, Center, MULTIGIG RT 2R



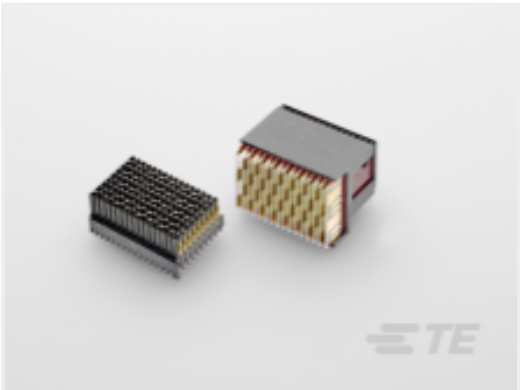
TE Part #2132742-1
IMP100S,R,RA4P6C,UG,46



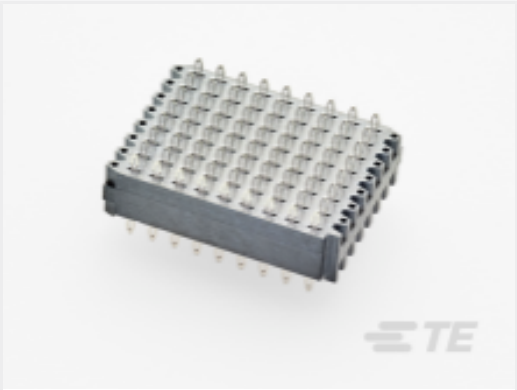
TE Part #2302789-1
VERTRECASSY,CENTER,MULTIGIG RT3



TE Part #2000676-2
Keyed Guide Pin, Machined, Vita 46



TE Part #2302790-1
VERTRECASSY,RIGHTEND,MULTIGIG RT3



TE Part #2352497-1
BPConnAssy,Center,MULTIGIG BP Stacker



TE Part #9-1879333-1
CPF0402 200K 0.1% 25PPM 5K RL

Documents

Product Drawings

PIN GUIDE KEYED 9mm PLATED 24-

English

CAD Files

3D PDF

3D

Customer View Model

ENG_CVM_CVM_1410336-2_A.2d_dxf.zip

English

Customer View Model

ENG_CVM_CVM_1410336-2_A.3d_igs.zip

English

Customer View Model

ENG_CVM_CVM_1410336-2_A.3d_stp.zip

English

By downloading the CAD file I accept and agree to the [Terms and Conditions](#) of use.

Datasheets & Catalog Pages

2_PIECE_POWER_CONNECTORS_qrg_4-1773458-1

English

Product Specifications

Application Specification

English