



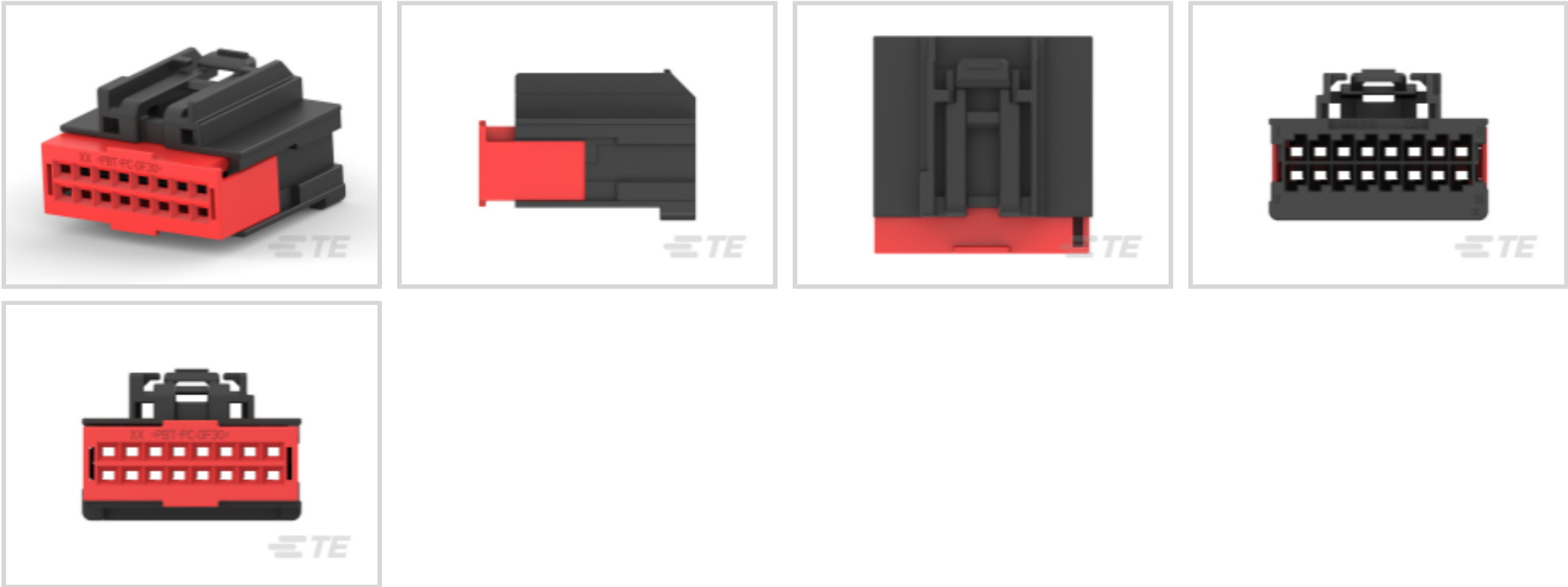
Get .64 Connector System

TE Internal #: 1456989-1

16 Position Housing, Housing for Female Terminals, Wire-to-Wire, 2.54 mm [.1 in] Centerline, Black, Wire & Cable, Signal, Get .64 Connector System

[View on TE.com >](#)

Connectors > Automotive Connectors > Automotive Housings



Number of Positions: 16

Connector & Housing Type: Housing for Female Terminals

Mating Tab Width: .64 mm [.025 in]

Connector System: Wire-to-Wire

Centerline (Pitch): 2.54 mm [.1 in]

Features

Product Type Features

Mixed & Hybrid Connector	No
Connector Shape	Rectangular
Connector & Housing Type	Housing for Female Terminals
Connector System	Wire-to-Wire
Sealable	No
Primary Locking Feature	Integrated in Housing
Connector & Contact Terminates To	Wire & Cable

Configuration Features

Blank Cavity Position	0
Number of Positions	16
Number of Rows	2

Body Features

Primary Product Color	Black
Connector & Keying Code	A



Contact Features

Contact Size	.64mm
Contact Type	Receptacle
Mating Tab Width	.64 mm[.025 in]

Mechanical Attachment

Strain Relief	Without
Terminal Position Assurance	Yes
Mating Alignment Type	Keyed
Mating Alignment	With
Connector Mounting Type	Cable Mount (Free-Hanging)

Housing Features

Housing Material	PA GF
Centerline (Pitch)	2.54 mm[.1 in]

Dimensions

Row-to-Row Spacing	2.54 mm[.1 in]
--------------------	----------------

Usage Conditions

Operating Temperature (Max)	100 °C[212 °F]
Operating Temperature Range	-40 – 100 °C[-40 – 212 °F]

Operation/Application

Circuit Application	Signal
---------------------	--------

Industry Standards

IP Rating	IP67
UL Flammability Rating	UL 94HB

Packaging Features

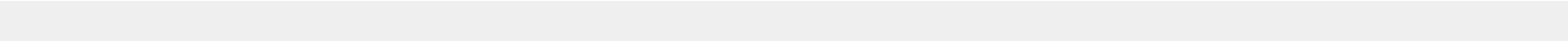
Packaging Method	Bag & Box
------------------	-----------

Other

Serviceable	Yes
Connector Position Assurance Capable	Yes

Product Compliance

For compliance documentation, visit the product page on [TE.com](#)>





EU RoHS Directive 2011/65/EU	Compliant
EU ELV Directive 2000/53/EC	Compliant
China RoHS 2 Directive MIIT Order No 32, 2016	No Restricted Materials Above Threshold
EU REACH Regulation (EC) No. 1907/2006	Current ECHA Candidate List: JAN 2025 (247) Candidate List Declared Against: JAN 2025 (247) Does not contain REACH SVHC
Halogen Content	Low Halogen - Br, Cl, F, I < 900 ppm per homogenous material. Also BFR/CFR/PVC Free
Solder Process Capability	Not applicable for solder process capability


Product Compliance Disclaimer

This information is provided based on reasonable inquiry of our suppliers and represents our current actual knowledge based on the information they provided. This information is subject to change. The part numbers that TE has identified as EU RoHS compliant have a maximum concentration of 0.1% by weight in homogenous materials for lead, hexavalent chromium, mercury, PBB, PBDE, DBP, BBP, DEHP, DIBP, and 0.01% for cadmium, or qualify for an exemption to these limits as defined in the Annexes of Directive 2011/65/EU (RoHS2). Finished electrical and electronic equipment products will be CE marked as required by Directive 2011/65/EU. Components may not be CE marked. Additionally, the part numbers that TE has identified as EU ELV compliant have a maximum concentration of 0.1% by weight in homogenous materials for lead, hexavalent chromium, and mercury, and 0.01% for cadmium, or qualify for an exemption to these limits as defined in the Annexes of Directive 2000/53/EC (ELV). Regarding the REACH Regulation, the information TE provides on SVHC in articles for this part number is based on the latest European Chemicals Agency (ECHA) 'Guidance on requirements for substances in articles' posted at this URL: <https://echa.europa.eu/guidance-documents/guidance-on-reach>

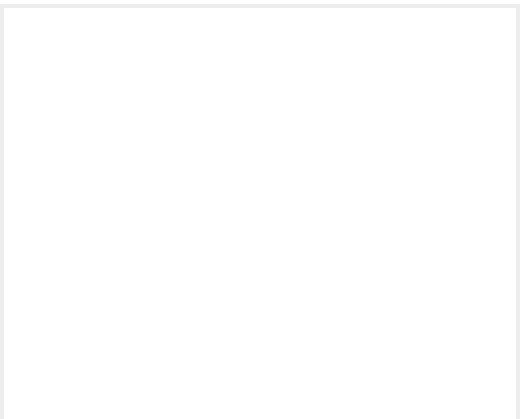
Compatible Parts




TE Part # 1411275-1
GET; FEMALE SPACER; 2X8 POS.



TE Part # 3-1579007-6
EXTRACTION TOOL



TE Part # 2066148-5
Wire harness Toggle L & R. S. Bank R



TE Part # 6-1419167-1
2X8 MALE INLINE ASSY KEY A

Also in the Series | [Get .64 Connector System](#)



Automotive Connector Caps & Covers (5)



Automotive Headers(3)



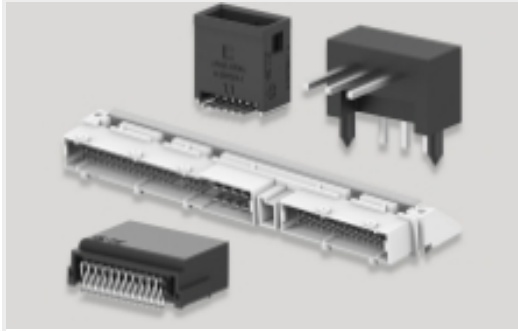
Automotive Housings(87)



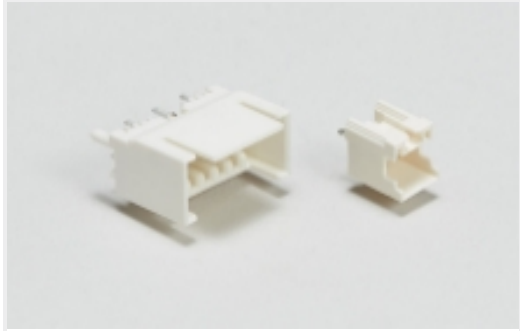
Automotive Terminals(28)



Insertion & Extraction Tools(1)



PCB Headers & Receptacles(3)

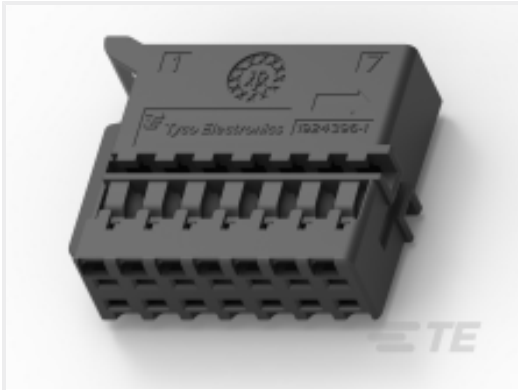


Wire-to-Board Headers & Receptacles (3)

Customers Also Bought



TE Part #CAT-G3353-CH8172
GET .64 CONNECTOR SYSTEM,
CONNECTOR HSG



TE Part #1924396-1
14P MCON 1.2 SCCM Inner Housing



TE Part #1-1670920-1
8POS, MCON 1.2 LL REC SEALED



TE Part #936121-1
4POS MOS TAB



TE Part #1241390-1
AMP MCP 2.8K, CONTACT



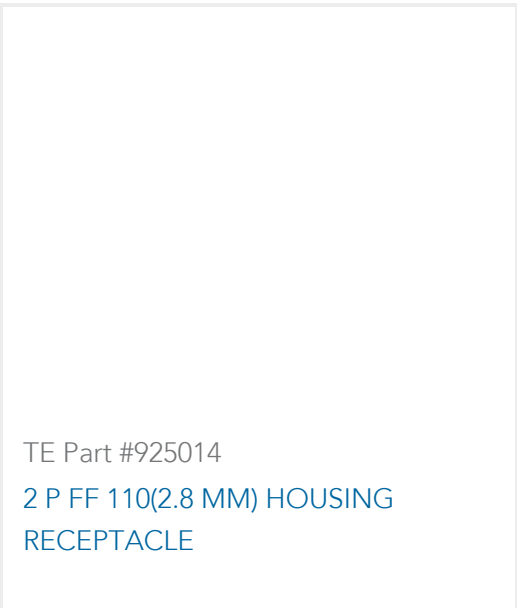
TE Part #284853-2
12 POS FEMALE CONNECTOR ASS'Y



TE Part #2272431-3
1X6 GET UNSLD SIDE LATCH PLUG,
KEY C



TE Part #281991-2
HSG FOR P-LOCK MK I TERM



TE Part #925014
2 P FF 110(2.8 MM) HOUSING
RECEPTACLE

Documents



Product Drawings

2x8 Fem unsealed LP assy Key A

English

CAD Files

3D PDF

3D

Customer View Model

ENG_CVM_CVM_1456989-1_C.2d_dxf.zip

English

Customer View Model

ENG_CVM_CVM_1456989-1_C.3d_igs.zip

English

Customer View Model

ENG_CVM_CVM_1456989-1_C.3d_stp.zip

English

By downloading the CAD file I accept and agree to the [Terms and Conditions](#) of use.

Instruction Sheets

Instruction Sheet (U.S.)

English