



Connectors > Automotive Connectors > Automotive Housings



Number of Positions: 1

Connector & Housing Type: **Housing for Female Terminals**

Mating Tab Width: **8 mm [ .314 in ]**

Connector System: **Wire-to-Wire**

Sealable: **Yes**

Features

Product Type Features

Mixed & Hybrid Connector	No
Connector Shape	Rectangular
Connector & Housing Type	Housing for Female Terminals
Connector System	Wire-to-Wire
Sealable	Yes
Primary Locking Feature	Integrated in Housing
Connector & Contact Terminates To	Wire & Cable

Configuration Features

Number of Positions	1
---------------------	---

Electrical Characteristics

Operating Voltage	13 VDC
Nominal Voltage Architecture	12 V

Body Features

Cable Exit Angle	180°
Primary Product Color	Black
Connector & Keying Code	Neutral

Contact Features

Contact Size	8mm
--------------	-----



Contact Type	Receptacle
Mating Tab Width	8 mm[.314 in]

Mechanical Attachment

Strain Relief	Without
Terminal Position Assurance	Yes
Mating Alignment Type	Keyed
Mating Alignment	With
Connector Mounting Type	Cable Mount (Free-Hanging)

Housing Features

Housing Material	PBT
------------------	-----

Dimensions

Product Width	40 mm[1.575 in]
Product Length	25.6 mm[1.008 in]
Connector Height	31 mm[1.22 in]

Usage Conditions

Operating Temperature (Max)	100 °C[212 °F]
Operating Temperature Range	-40 – 100 °C[-40 – 212 °F]

Industry Standards

IP Rating	IP67
UL Flammability Rating	UL 94HB

Packaging Features

Packaging Quantity	2000
Packaging Method	Box

Other

Serviceable	Yes
Connector Position Assurance Capable	No

Product Compliance

For compliance documentation, visit the product page on TE.com>

EU RoHS Directive 2011/65/EU	Compliant
EU ELV Directive 2000/53/EC	Compliant
China RoHS 2 Directive MIIT Order No 32, 2016	No Restricted Materials Above Threshold



EU REACH Regulation (EC) No. 1907/2006	Current ECHA Candidate List: JAN 2025 (247) Candidate List Declared Against: JAN 2025 (247) Does not contain REACH SVHC
Halogen Content	Low Halogen - Br, Cl, F, I < 900 ppm per homogenous material. Also BFR/CFR/PVC Free
Solder Process Capability	Not applicable for solder process capability

Product Compliance Disclaimer

This information is provided based on reasonable inquiry of our suppliers and represents our current actual knowledge based on the information they provided. This information is subject to change. The part numbers that TE has identified as EU RoHS compliant have a maximum concentration of 0.1% by weight in homogenous materials for lead, hexavalent chromium, mercury, PBB, PBDE, DBP, BBP, DEHP, DIBP, and 0.01% for cadmium, or qualify for an exemption to these limits as defined in the Annexes of Directive 2011/65/EU (RoHS2). Finished electrical and electronic equipment products will be CE marked as required by Directive 2011/65/EU. Components may not be CE marked. Additionally, the part numbers that TE has identified as EU ELV compliant have a maximum concentration of 0.1% by weight in homogenous materials for lead, hexavalent chromium, and mercury, and 0.01% for cadmium, or qualify for an exemption to these limits as defined in the Annexes of Directive 2000/53/EC (ELV). Regarding the REACH Regulation, the information TE provides on SVHC in articles for this part number is based on the latest European Chemicals Agency (ECHA) 'Guidance on requirements for substances in articles' posted at this URL: <https://echa.europa.eu/guidance-documents/guidance-on-reach>

Compatible Parts



TE Part # 1544606-1  
TAB HOUSING, 8MM NG1, 1 WAY



TE Part # 1544227-1  
CLIP 8 MM NG1-1 PO




TE Part # CAT-NC1-MPTS4812  
Medium Power Terminals Single Wire Seals 4.8mm-12mm




TE Part # 1544228-1  
CLIP 8 MM NG1-1 PO


Also in the Series | NG1




Automotive Connector Caps & Covers (3)



Automotive Housings(45)



Automotive Terminals(24)

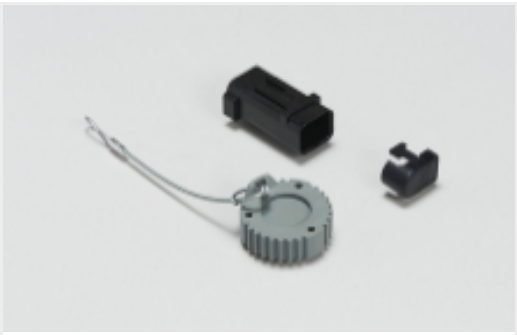


Connector Seals & Cavity Plugs(9)



Insertion & Extraction Tools(13)

Also in the Series | NG Power Terminals and Connectors



Automotive Connector Caps & Covers (3)



Automotive Housings(45)



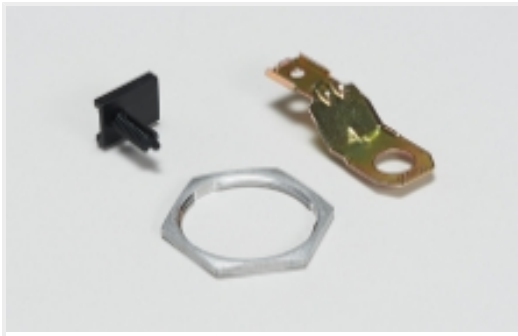
Automotive Terminals(24)



Connector Seals & Cavity Plugs(9)

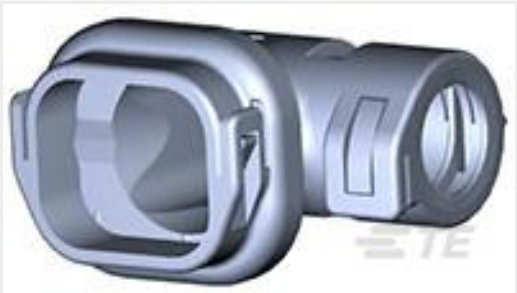


Insertion & Extraction Tools(13)



Other Automotive Connector Accessories(1)

Customers Also Bought



TE Part #1-1801466-1  
COVER, FIXED, 2 WAY HP CONNECTOR



TE Part #1544970-4  
SEAL, NG9K



TE Part #1-1801175-6  
2W RECEPTACLE HP CONNECTOR BROWN



TE Part #1-1801155-5  
COVER FOR 2W HP CONNECTOR



TE Part #1-1801356-1  
ROTATIVE COVER, RIGHT ANGLE, 2W HP CONN



TE Part #1544227-1  
CLIP 8 MM NG1-1 PO

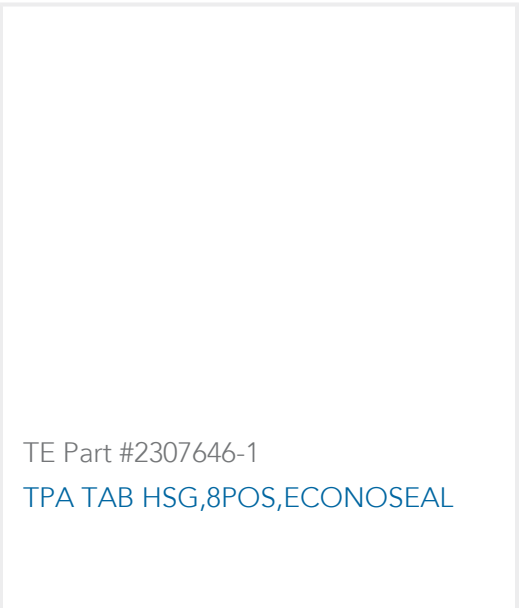


TE Part #1801616-1  
FUSES HOLDER 10 MINIFUSES



TE Part #2334430-2  
050/110 HYB 36P COVER HSG





Documents

Product Drawings

1W 8MM NG1 SEALED CLIP ASSY BLACK

English

1W 8MM NG1 SEALED CLIP ASSY BLACK

English

CAD Files

Customer View Model

ENG\_CVM\_CVM\_1544603-1\_B.2d\_dxf.zip

English

3D PDF

3D

Customer View Model

ENG\_CVM\_CVM\_1544603-1\_B.3d\_igs.zip

English

Customer View Model

ENG\_CVM\_CVM\_1544603-1\_B.3d\_stp.zip

English

By downloading the CAD file I accept and agree to the [Terms and Conditions](#) of use.

Product Specifications

Product Specification

English

Instruction Sheets

Instruction Sheet (non U.S.)

English

PRECONISATION DE CONTROLE PAR < PUSH-TEST > DU PORTE-CLIP 1 VOIE 8NG1 ETANCHE TESTING INSTRUCTIONS FOR < PUSH TEST > ON THE 1-WAY 8NG1 WATERPROOF CLIP HOUSING

English

Instruction Sheet (non U.S.)

English

Instruction Sheet (non U.S.)

French

1544603-1

1 Position Housing, Housing for Female Terminals, Wire-to-Wire, Sealable, Black,  
Wire & Cable, Cable Mount (Free-Hanging), Hybrid

