



Terminals & Splices > Splices



Splice Type: **Splice Accessory**

Government Qualified Splice: **No**

Packaging Method: **Package**

Features

Product Type Features

Splice Accessory Type	Repair Kit
Splice Type	Splice Accessory

Body Features

Product Weight	1 g
----------------	-----

Industry Standards

Government Qualified Splice	No
-----------------------------	----

Packaging Features

Packaging Quantity	1
Packaging Method	Package

Product Compliance

[For compliance documentation, visit the product page on TE.com>](#)

EU RoHS Directive 2011/65/EU	Compliant
EU ELV Directive 2000/53/EC	Compliant
China RoHS 2 Directive MIIT Order No 32, 2016	No Restricted Materials Above Threshold
EU REACH Regulation (EC) No. 1907/2006	Current ECHA Candidate List: JAN 2025 (247) Candidate List Declared Against: JAN 2022 (223) Does not contain REACH SVHC
Halogen Content	Not Yet Reviewed for halogen content
Solder Process Capability	Not applicable for solder process capability



Product Compliance Disclaimer

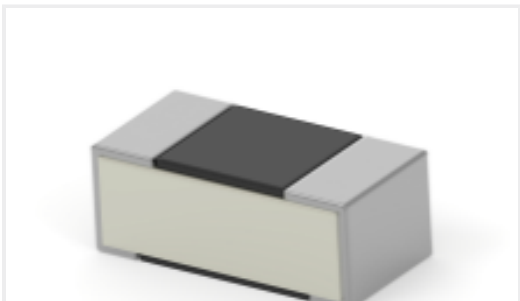
This information is provided based on reasonable inquiry of our suppliers and represents our current actual knowledge based on the information they provided. This information is subject to change. The part numbers that TE has identified as EU RoHS compliant have a maximum concentration of 0.1% by weight in homogenous materials for lead, hexavalent chromium, mercury, PBB, PBDE, DBP, BBP, DEHP, DIBP, and 0.01% for cadmium, or qualify for an exemption to these limits as defined in the Annexes of Directive 2011/65/EU (RoHS2). Finished electrical and electronic equipment products will be CE marked as required by Directive 2011/65/EU. Components may not be CE marked. Additionally, the part numbers that TE has identified as EU ELV compliant have a maximum concentration of 0.1% by weight in homogenous materials for lead, hexavalent chromium, and mercury, and 0.01% for cadmium, or qualify for an exemption to these limits as defined in the Annexes of Directive 2000/53/EC (ELV). Regarding the REACH Regulation, the information TE provides on SVHC in articles for this part number is based on the latest European Chemicals Agency (ECHA) 'Guidance on requirements for substances in articles' posted at this URL: <https://echa.europa.eu/guidance-documents/guidance-on-reach>

Compatible Parts



TE Part # 165346
[PIDG/PG. INTRO.KIT](#)

Customers Also Bought



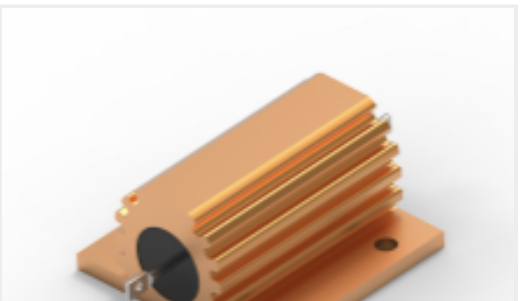
TE Part #1-1625873-3
[ROX1S LAB-KIT](#)



TE Part #1SNA125120R1100
[M10/10.N](#)



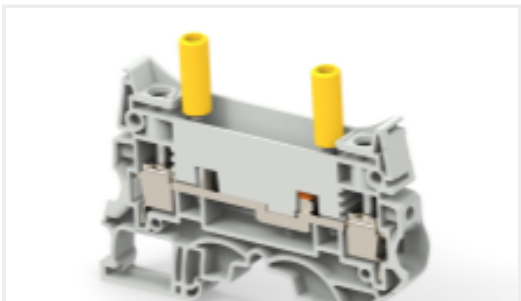
TE Part #1-6609940-0
[PM0SSSX0=C3324](#)



TE Part #CAT-C339-H85913
[Power Resistors: Aluminum Housed, HSA](#)



TE Part #1625873-8
[CFR25 LAB-KIT](#)



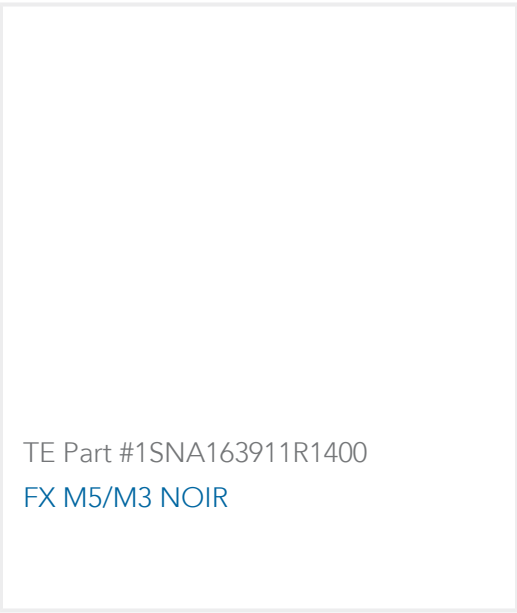
TE Part #1SNK508311R0000
[ZS10-ST-T4](#)



TE Part #228226-1
[BNC BLKHD JACK ADAPTER GOLD](#)



TE Part #667353-000
[CWT-1501](#)



TE Part #1SNA163911R1400
FX M5/M3 NOIR

Documents

Product Drawings
PIDG REPAIR KIT

English