



TE Internal #: 1674459-4
A, 2.0, Standard Profile, Receptacle, 1 Port, Top, Right Angle, Box
& Tray / Tray, Flush, Through Hole - Solder, Cable-to-Board, USB
Connectors
[View on TE.com >](#)

Connectors > Audio & Video Connectors > USB Connectors



USB Adapter Type: A
USB Version: 2.0
Connector Profile: Standard
Connector & Housing Type: Receptacle
Number of Ports: 1

Features

Product Type Features

| | |
|-----------------------------------|-----------------------|
| USB Adapter Type | A |
| USB Version | 2.0 |
| Connector & Housing Type | Receptacle |
| Connector System | Cable-to-Board |
| Connector & Contact Terminates To | Printed Circuit Board |
| USB Connector Type | USB 2.0 Type-A |

Configuration Features

| | |
|-------------------------|---|
| Number of Mounting Legs | 4 |
| Number of Ports | 1 |
| Number of Positions | 4 |

Body Features

| | |
|------------------------|----------|
| Shell Plating Finish | Matte |
| Shell Plating Material | Tin |
| Connector Profile | Standard |



Contact Features

| | |
|--|-------------------|
| Contact Mating Area Plating Material Thickness | .76 µm[29.92 µin] |
| Contact Mating Area Plating Material | Gold (Au) |
| Contact Current Rating (Max) | 1 A |

Termination Features

| | |
|--------------------------------|-----------------------|
| Termination Post & Tail Length | 1.7 mm[.067 in] |
| Termination Method to PCB | Through Hole - Solder |

Mechanical Attachment

| | |
|--------------------------|----------------|
| Locking Feature | With |
| PCB Mount Alignment Type | Locating Posts |
| PCB Mount Location | Top |
| PCB Connector Seating | Flush |
| PCB Mount Retention Type | Kinked Legs |
| Panel Mount Feature Type | Flange |
| Connector Mounting Type | Board Mount |

Housing Features

| | |
|--------------------|--------------------------------|
| Housing Color | Natural |
| Housing Material | Thermoplastic |
| Body Orientation | Right Angle |
| Centerline (Pitch) | 2 mm, 2.5 mm[.078 in][.098 in] |

Dimensions

| | |
|-----------------------------|---------------|
| PCB Thickness (Recommended) | 1 mm[.039 in] |
|-----------------------------|---------------|

Usage Conditions

| | |
|-----------------------------|---------------------------|
| Soldering Temperature (Max) | 260 °C[500 °F] |
| Mating Cycles (Max) | 30000 |
| Operating Temperature Range | -55 – 85 °C[-67 – 185 °F] |

Operation/Application

| | |
|---------------------|----------------|
| Halogen Free | No |
| Circuit Application | Power & Signal |

Industry Standards

| | |
|----------------------------|---------|
| Industry Standard | USB 2.0 |
| Moisture Sensitivity Level | 1 |



| | |
|------------------------|----------|
| UL Flammability Rating | UL 94V-0 |
|------------------------|----------|

Packaging Features

| | |
|--------------------|------------------|
| Packaging Quantity | 500 |
| Packaging Method | Box & Tray, Tray |

Product Compliance

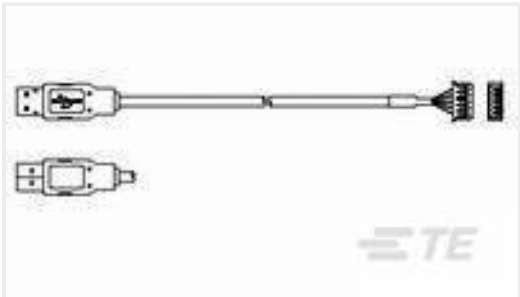
For compliance documentation, visit the product page on TE.com>

| | |
|---|--|
| EU RoHS Directive 2011/65/EU | Compliant |
| EU ELV Directive 2000/53/EC | Compliant |
| China RoHS 2 Directive MIIT Order No 32, 2016 | No Restricted Materials Above Threshold |
| EU REACH Regulation (EC) No. 1907/2006 | Current ECHA Candidate List: JAN 2025 (247) Candidate List Declared Against: JUNE 2024 (241) Does not contain REACH SVHC |
| Halogen Content | Low Halogen - Br, Cl, F, I < 900 ppm per homogenous material. Also BFR/CFR/PVC Free |
| Solder Process Capability | Pin-in-Paste capable to 260°C |

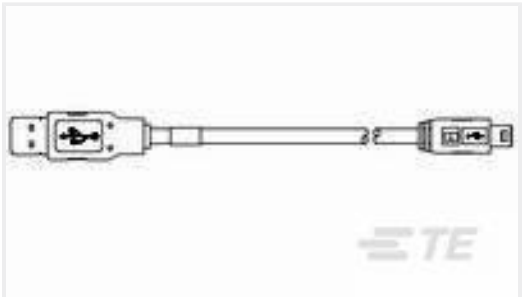
Product Compliance Disclaimer

This information is provided based on reasonable inquiry of our suppliers and represents our current actual knowledge based on the information they provided. This information is subject to change. The part numbers that TE has identified as EU RoHS compliant have a maximum concentration of 0.1% by weight in homogenous materials for lead, hexavalent chromium, mercury, PBB, PBDE, DBP, BBP, DEHP, DIBP, and 0.01% for cadmium, or qualify for an exemption to these limits as defined in the Annexes of Directive 2011/65/EU (RoHS2). Finished electrical and electronic equipment products will be CE marked as required by Directive 2011/65/EU. Components may not be CE marked. Additionally, the part numbers that TE has identified as EU ELV compliant have a maximum concentration of 0.1% by weight in homogenous materials for lead, hexavalent chromium, and mercury, and 0.01% for cadmium, or qualify for an exemption to these limits as defined in the Annexes of Directive 2000/53/EC (ELV). Regarding the REACH Regulation, the information TE provides on SVHC in articles for this part number is based on the latest European Chemicals Agency (ECHA) 'Guidance on requirements for substances in articles' posted at this URL: <https://echa.europa.eu/guidance-documents/guidance-on-reach>


Compatible Parts




TE Part # 2142872-1
cable assy, usb a plug to 5p hsg



TE Part # 1929690-1
USB CABLE, USB A to Mini USB,Blue



TE Part # 1-1734028-3
Std USB, Type A, Plug



TE Part # 1487593-2
USB, A-BLUNT,28/24,WHT,1.5M



TE Part # 1487593-1
USB, A-BLUNT,28/24,WHT,2.0M



TE Part # 1-1734028-1
Std USB, Type A, Plug, Natural



TE Part # 1487600-1
USB, A-BLUNT,28/26,BLK,1.0M



TE Part # 1734028-1
Std USB Type A, Plug, Natural

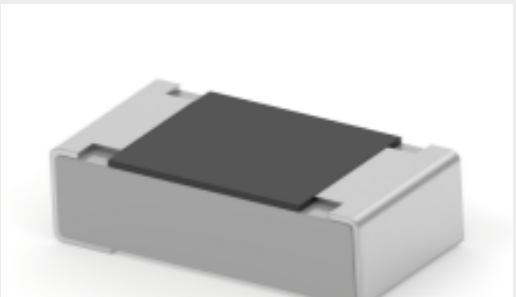


TE Part # 1487599-1
USB, A-BLUNT,28/28,BLK,0.83M

Customers Also Bought



TE Part #1-1939638-7
DYNAMIC 1100D HDR ASSY H 34P XBLACK GOLD



TE Part #2-2176340-7
CRGCQ 0603 22K 5%



TE Part #2199230-3
M.2 0.5PITCH 4.2H KEY B 15U" AU



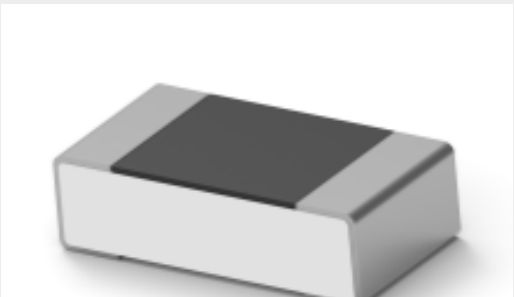
TE Part #2317656-1
AV25 SPM 3A MOVING RING WHITE 12V



TE Part #7-338728-6
MICROM. MOB SMD CON



TE Part #ASDD610-23PN
PLUG ASSY 10-23 AS DOUBLE DENSITY



TE Part #1-2176371-7
RQ 0603 6K81 0.1% 10PPM 5K RL



TE Part #2-2176372-8
RQ 0603 95K3 0.1% 10PPM 5K RL



TE Part #292227-7
1.5 MINI CT SGL H SMT W BOSS 7



TE Part #MS27488-16-2
SEALING PLUGS

Documents



Product Drawings

Std USB Type A, R/A,T/H, Natural,HighDur

English

CAD Files

3D PDF

3D

Customer View Model

ENG_CVM_CVM_1674459-4_E.2d_dxf.zip

English

Customer View Model

ENG_CVM_CVM_1674459-4_E.3d_igs.zip

English

Customer View Model

ENG_CVM_CVM_1674459-4_E.3d_stp.zip

English

By downloading the CAD file I accept and agree to the [Terms and Conditions](#) of use.

Product Specifications

Product Specification

English

Product Specification

English