



Connectors > PCB Connectors > Wire-to-Board Connectors > FFC, FPC & Ribbon Connectors > FPC Connectors



Centerline (Pitch): 1 mm [.039 in]
Mating Retention Type: Non ZIF
PCB Mount Orientation: Vertical
Termination Method to PCB: Surface Mount
Contact Mating Area Plating Material: Tin (Sn)

Features

Product Type Features

| | |
|-----------------------------------|---|
| Connector & Contact Terminates To | Flexible Printed Circuit (FPC), Printed Circuit Board |
| Connector Product Type | Connector Assembly |
| Connector System | Flex-to-Board |
| PCB Connector Type | PCB Mount Receptacle |

Configuration Features

| | |
|-----------------------------------|----------|
| Compatible With Wire & Cable Type | FFC, FPC |
| Number of Rows | 1 |
| PCB Mount Orientation | Vertical |
| Number of Positions | 6 |

Electrical Characteristics

| | |
|-------------------|---------|
| Operating Voltage | 125 VAC |
|-------------------|---------|

Body Features

| | |
|-----------------------|---------|
| Primary Product Color | Natural |
|-----------------------|---------|



Contact Features

| | |
|---|------------------|
| PCB Contact Termination Area Plating Material Finish | Matte |
| Contact Mating Area Plating Material Thickness | 1 µm[39.37 µin] |
| Contact Current Rating (Max) | 1 A |
| Contact Shape & Form | Single Beam |
| PCB Contact Termination Area Plating Material Thickness | 1 µm[39.37 µin] |
| Contact Layout | Staggered Type A |
| Contact Base Material | Phosphor Bronze |
| PCB Contact Termination Area Plating Material | Tin |
| Contact Type | Socket |
| Contact Mating Area Plating Material Finish | Matte |
| Contact Mating Area Plating Material | Tin (Sn) |

Termination Features

| | |
|---------------------------|---------------|
| Termination Method to PCB | Surface Mount |
|---------------------------|---------------|

Mechanical Attachment

| | |
|-------------------------|-------------|
| Connector Mounting Type | Board Mount |
| PCB Mount Retention | Without |
| Mating Alignment | With |
| PCB Mount Alignment | Without |
| Mating Retention Type | Non ZIF |

Housing Features

| | |
|--------------------|----------------|
| Housing Material | Nylon GF |
| Centerline (Pitch) | 1 mm [.039 in] |

Dimensions

| | |
|------------------------------|-----------------|
| Accepts Flex Cable Thickness | .3 mm [.012 in] |
| Connector Width | 4 mm [.157 in] |
| Connector Height | 5.6 mm [.22 in] |
| Connector Length | 7 mm [.314 in] |

Usage Conditions

| | |
|-----------------------------|--------------------------|
| Operating Temperature Range | -20 – 85 °C[-4 – 185 °F] |
|-----------------------------|--------------------------|

Operation/Application

| | |
|---------------------|--------|
| Circuit Application | Signal |
|---------------------|--------|



Identification Marking

| | |
|--------------------------------|------|
| Circuit Identification Feature | With |
|--------------------------------|------|

Packaging Features

| | |
|--------------------|-------------|
| Packaging Quantity | 800 |
| Packaging Method | Tape & Reel |

Product Compliance

For compliance documentation, visit the product page on TE.com>

| | |
|---|---|
| EU RoHS Directive 2011/65/EU | Compliant |
| EU ELV Directive 2000/53/EC | Compliant |
| China RoHS 2 Directive MIIT Order No 32, 2016 | No Restricted Materials Above Threshold |
| EU REACH Regulation (EC) No. 1907/2006 | Current ECHA Candidate List: JAN 2025 (247) Candidate List Declared Against: JAN 2025 (247) Does not contain REACH SVHC |
| Halogen Content | Not Low Halogen - contains Br or Cl > 900 ppm. |
| Solder Process Capability | Reflow solder capable to 245°C |

Product Compliance Disclaimer

This information is provided based on reasonable inquiry of our suppliers and represents our current actual knowledge based on the information they provided. This information is subject to change. The part numbers that TE has identified as EU RoHS compliant have a maximum concentration of 0.1% by weight in homogenous materials for lead, hexavalent chromium, mercury, PBB, PBDE, DBP, BBP, DEHP, DIBP, and 0.01% for cadmium, or qualify for an exemption to these limits as defined in the Annexes of Directive 2011/65/EU (RoHS2). Finished electrical and electronic equipment products will be CE marked as required by Directive 2011/65/EU. Components may not be CE marked. Additionally, the part numbers that TE has identified as EU ELV compliant have a maximum concentration of 0.1% by weight in homogenous materials for lead, hexavalent chromium, and mercury, and 0.01% for cadmium, or qualify for an exemption to these limits as defined in the Annexes of Directive 2000/53/EC (ELV). Regarding the REACH Regulation, the information TE provides on SVHC in articles for this part number is based on the latest European Chemicals Agency (ECHA) 'Guidance on requirements for substances in articles' posted at this URL: <https://echa.europa.eu/guidance-documents/guidance-on-reach>

Compatible Parts

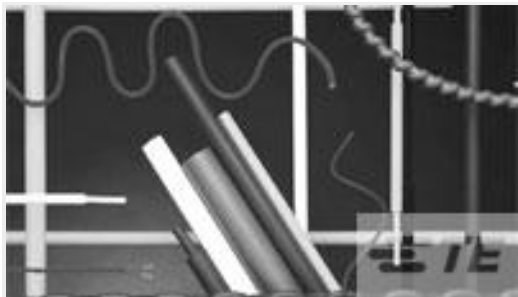


TE Part # 84982-6
1MM FFC SMT V ASSY 6P EMBOSS

Customers Also Bought



TE Part #1735042-8
1MM FFC SMT V ASSY 8P EMBOSS



TE Part #3249234001
DCPT-12/4-45-SP



TE Part #5-2301995-4
RJ45 JACK INT.MAG. 1GB LED 1X1 VERT.



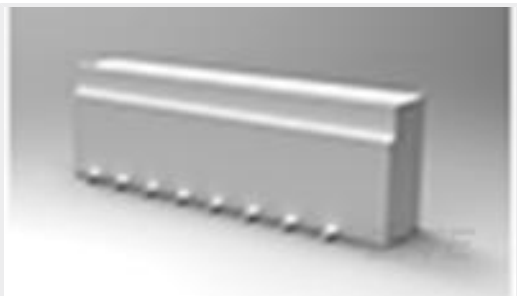
TE Part #3-1623932-1
CFR50 5% 180R



TE Part #1571296-2
SWITCH,TACT,SMT,SEALD,GRND,T&R



TE Part #84982-4
1MM FFC SMT V ASSY 4P EMBOSS



TE Part #1-1735042-2
1MM FFC SMT V ASSY 12P EMBOSS



TE Part #1622579-1
LR1 1% 82K5



TE Part #2842138-5
10P,2MM,BRK HDR,DRV,2.8,0.1AU, BOX



TE Part #1734261-4
1.25 WTB, HDR, SMT, RA, 4P

Documents

Product Drawings

1MM FFC SMT V ASSY 6P EMBOSS

English

CAD Files

3D PDF

3D

Customer View Model

ENG_CVM_CVM_1735042-6_M.2d_dxf.zip



English

Customer View Model
[ENG_CVM_CVM_1735042-6_M.3d_igs.zip](#)

English

Customer View Model
[ENG_CVM_CVM_1735042-6_M.3d_stp.zip](#)

English

By downloading the CAD file I accept and agree to the [Terms and Conditions](#) of use.

Datasheets & Catalog Pages
[1-1773959-7-FPC-Connectors-CN](#)

English

Product Specifications
[Product Specification](#)

English