



HPI

TE Internal #: 1775441-2

Housing, Receptacle, Crimp, Wire-to-Wire, UL 94V-0, 2 Position, 1.5 mm [.059 in] Centerline, HPI, Rectangular Wire & Cable Connectors & Housings

[View on TE.com >](#)

Connectors > Rectangular Connectors > Standard Rectangular Connectors > AMP HPI 1.5 mm Receptacle Housings



Connector Product Type: **Housing**

Connector & Housing Type: **Receptacle**

Mating Retention: **With**

Mating Retention Type: **Locking**

Termination Method to Wire & Cable: **Crimp**

[All AMP HPI 1.5 mm Receptacle Housings \(14\)](#)

Features

Product Type Features

Connector Product Type	Housing
Connector & Housing Type	Receptacle
Connector System	Wire-to-Wire
Sealable	No
Connector & Contact Terminates To	Wire & Cable

Configuration Features

Number of Positions	2
Number of Rows	1

Electrical Characteristics

Operating Voltage	250 VAC
-------------------	---------

Body Features

Primary Product Color	Natural
-----------------------	---------



Contact Features

Contact Type	Socket
Contact Current Rating (Max)	3 A

Termination Features

Termination Method to Wire & Cable	Crimp
------------------------------------	-------

Mechanical Attachment

Strain Relief	Without
Panel Mount Feature	Without
Mating Retention	With
Mating Retention Type	Locking
Connector Mounting Type	Cable Mount (Free-Hanging)

Housing Features

Housing Material	Thermoplastic
Centerline (Pitch)	1.5 mm [.059 in]

Dimensions

Connector Width	6.15 mm [.248 in]
Connector Height	2.7 mm [.106 in]
Wire Size	30 – 24 AWG
Connector Length	4.1 mm [.161 in]

Usage Conditions

Operating Temperature Range	-55 – 105 °C [-67 – 221 °F]
-----------------------------	-----------------------------

Operation/Application

Circuit Application	Power & Signal
---------------------	----------------

Industry Standards

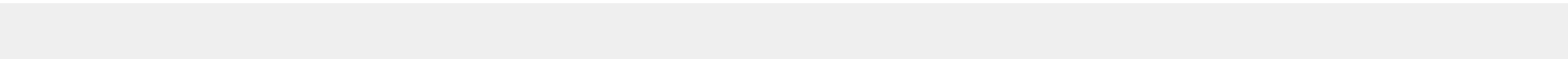
UL Flammability Rating	UL 94V-0
------------------------	----------

Packaging Features

Packaging Method	Bag
Packaging Quantity	1000

Product Compliance

For compliance documentation, visit the product page on [TE.com](#)>





EU RoHS Directive 2011/65/EU	Compliant
EU ELV Directive 2000/53/EC	Out of Scope
China RoHS 2 Directive MIIT Order No 32, 2016	No Restricted Materials Above Threshold
EU REACH Regulation (EC) No. 1907/2006	Current ECHA Candidate List: JAN 2025 (247) Candidate List Declared Against: JAN 2025 (247) Does not contain REACH SVHC
Halogen Content	Low Halogen - Br, Cl, F, I < 900 ppm per homogenous material. Also BFR/CFR/PVC Free
Solder Process Capability	Not applicable for solder process capability

Product Compliance Disclaimer

This information is provided based on reasonable inquiry of our suppliers and represents our current actual knowledge based on the information they provided. This information is subject to change. The part numbers that TE has identified as EU RoHS compliant have a maximum concentration of 0.1% by weight in homogenous materials for lead, hexavalent chromium, mercury, PBB, PBDE, DBP, BBP, DEHP, DIBP, and 0.01% for cadmium, or qualify for an exemption to these limits as defined in the Annexes of Directive 2011/65/EU (RoHS2). Finished electrical and electronic equipment products will be CE marked as required by Directive 2011/65/EU. Components may not be CE marked. Additionally, the part numbers that TE has identified as EU ELV compliant have a maximum concentration of 0.1% by weight in homogenous materials for lead, hexavalent chromium, and mercury, and 0.01% for cadmium, or qualify for an exemption to these limits as defined in the Annexes of Directive 2000/53/EC (ELV). Regarding the REACH Regulation, the information TE provides on SVHC in articles for this part number is based on the latest European Chemicals Agency (ECHA) ‘Guidance on requirements for substances in articles’ posted at this URL: <https://echa.europa.eu/guidance-documents/guidance-on-reach>

Compatible Parts

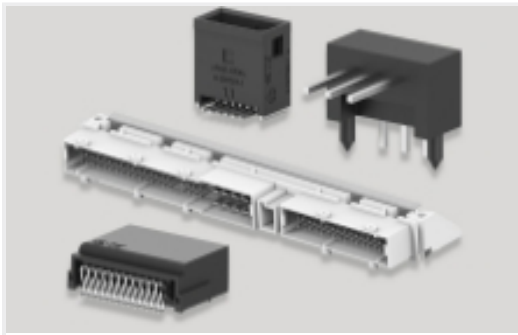
TE Part # CAT-H857-H34215
AMP HPI 1.5 mm Headers

TE Part # 1775442-1
EMIX CONN., 1.5mm PITCH, TERMINAL

Also in the Series | **HPI**



Connector Contacts(1)



PCB Headers & Receptacles(332)



Rectangular Connector Housings(86)



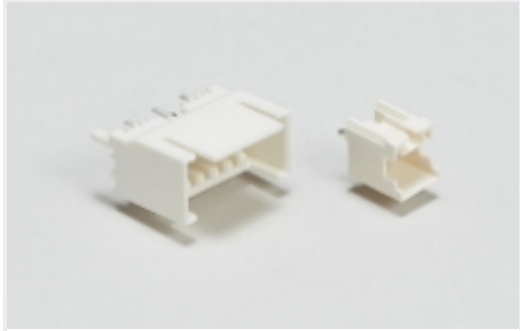
Rectangular Power Connectors(310)



Standard Rectangular Connectors(86)

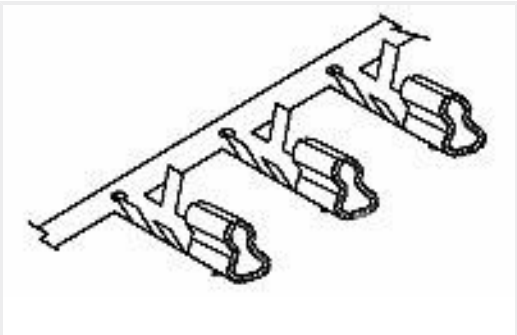


Wire-to-Board Connector Assemblies & Housings(48)

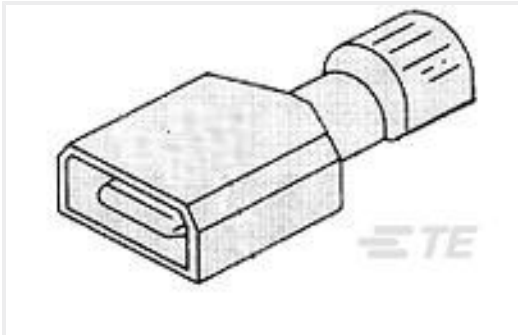


Wire-to-Board Headers & Receptacles (332)

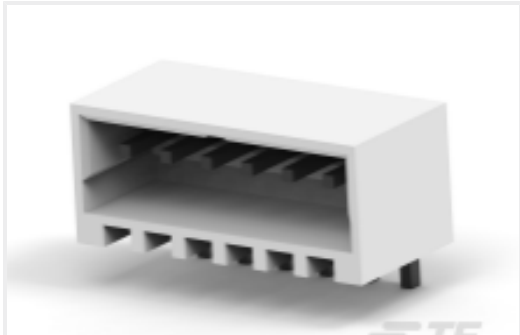
Customers Also Bought



TE Part #1775442-1
EMIX CONN., 1.5mm PITCH, TERMI



TE Part #4-521098-2
ULTRA-FAST 250 ASSEMBLY 12-10
AWG TPBR



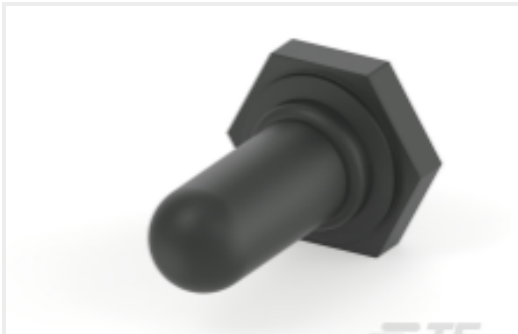
TE Part #CAT-H857-H34215
AMP HPI 1.5 mm Headers



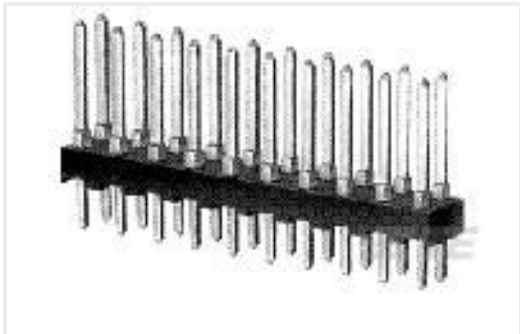
TE Part #1-1775441-2
EMIX CONN., 1.5MM PITCH, RCPT,
HSG, 12P



TE Part #163300-8
MATENLOK SOCKET



TE Part #1825609-1
B1048004=Boot,Toggle



TE Part #87215-2
10 MODII HDR DRST UNSHRD .100



TE Part #640250-7
07P SL156 HSG W/LCK RAMP NATL



TE Part #770520-6
AMPSEAL,TERMINAL,TIN PLATE,22-
24AWG WIRE

Documents



Product Drawings

EMIX CONN., 1.5MM PITCH, RCPT, HSG, 2P

English

CAD Files

Customer View Model

ENG_CVM_CVM_1775441-2_B.2d_dxf.zip

English

3D PDF

3D

Customer View Model

ENG_CVM_CVM_1775441-2_B.3d_igs.zip

English

Customer View Model

ENG_CVM_CVM_1775441-2_B.3d_stp.zip

English

By downloading the CAD file I accept and agree to the [Terms and Conditions](#) of use.

Datasheets & Catalog Pages

HPI Connectors QRG

English

Product Specifications

Application Specification

English