



Connectors > Automotive Connectors > Automotive Housings



Number of Positions: 2

Connector & Housing Type: **Housing for Male Terminals**

Mating Tab Width: 1.5 mm [.06 in]

Connector System: **Wire-to-Wire**

Centerline (Pitch): 3.33 mm [.131 in]

Features

Product Type Features

Mixed & Hybrid Connector	No
Connector Shape	Rectangular
Connector & Housing Type	Housing for Male Terminals
Connector System	Wire-to-Wire
Sealable	Yes
Primary Locking Feature	Integrated in Housing
Connector & Contact Terminates To	Wire & Cable

Configuration Features

Number of Positions	2
Number of Rows	1

Electrical Characteristics

Nominal Voltage Architecture	48 V
------------------------------	------

Body Features

Cable Exit Angle	180°
Primary Product Color	Black
Connector & Keying Code	1

Contact Features

Contact Size	1.5mm
--------------	-------



Contact Type	Tab
Mating Tab Width	1.5 mm[.06 in]
Contact Current Rating (Max)	8 A

Mechanical Attachment

Strain Relief	Add By Accessory
Terminal Position Assurance	No
Mating Alignment Type	Keyed
Mating Alignment	With
Connector Mounting Type	Cable Mount (Free-Hanging)

Housing Features

Housing Material	PBT GF15
Centerline (Pitch)	3.33 mm[.131 in]

Dimensions

Product Width	17.4 mm[.685 in]
Product Length	55.8 mm[2.197 in]
Connector Height	17.6 mm[.693 in]

Usage Conditions

Operating Temperature (Max)	150 °C[302 °F]
Operating Temperature Range	-40 – 150 °C[-40 – 302 °F]

Operation/Application

Circuit Application	Power
---------------------	-------

Industry Standards

IP Rating	IPX9K
UL Flammability Rating	UL 94HB

Packaging Features

Packaging Quantity	1260
Packaging Method	Box

Other

Serviceable	Yes
Connector Position Assurance Capable	No

Product Compliance



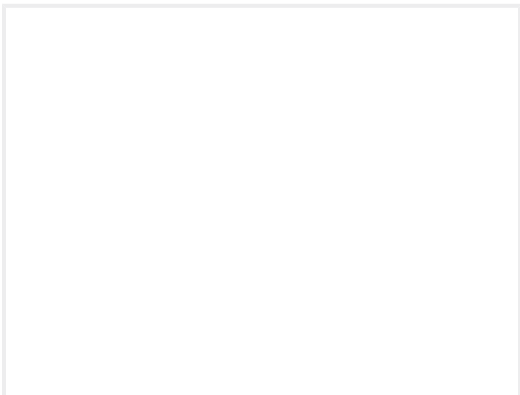




For compliance documentation, visit the product page on TE.com>

EU RoHS Directive 2011/65/EU	Compliant
EU ELV Directive 2000/53/EC	Compliant
China RoHS 2 Directive MIIT Order No 32, 2016	No Restricted Materials Above Threshold
EU REACH Regulation (EC) No. 1907/2006	Current ECHA Candidate List: JAN 2025 (247) Candidate List Declared Against: JAN 2025 (247) Does not contain REACH SVHC
Halogen Content	Low Halogen - Br, Cl, F, I < 900 ppm per homogenous material. Also BFR/CFR/PVC Free
Solder Process Capability	Not applicable for solder process capability

Product Compliance Disclaimer

This information is provided based on reasonable inquiry of our suppliers and represents our current actual knowledge based on the information they provided. This information is subject to change. The part numbers that TE has identified as EU RoHS compliant have a maximum concentration of 0.1% by weight in homogenous materials for lead, hexavalent chromium, mercury, PBB, PBDE, DBP, BBP, DEHP, DIBP, and 0.01% for cadmium, or qualify for an exemption to these limits as defined in the Annexes of Directive 2011/65/EU (RoHS2). Finished electrical and electronic equipment products will be CE marked as required by Directive 2011/65/EU. Components may not be CE marked. Additionally, the part numbers that TE has identified as EU ELV compliant have a maximum concentration of 0.1% by weight in homogenous materials for lead, hexavalent chromium, and mercury, and 0.01% for cadmium, or qualify for an exemption to these limits as defined in the Annexes of Directive 2000/53/EC (ELV). Regarding the REACH Regulation, the information TE provides on SVHC in articles for this part number is based on the latest European Chemicals Agency (ECHA) 'Guidance on requirements for substances in articles' posted at this URL: <https://echa.europa.eu/guidance-documents/guidance-on-reach>

Compatible Parts

 <p>TE Part # 1801150-1 TAB HOUSING 2 W HP BLACK</p>	 <p>TE Part # 1-1823174-4 2POS,1.5MM SFC,REC HSG ASSY,SLD</p>	 <p>TE Part # 1801176-8 2W RECEPTACLE HP SL CONNECTOR RED</p>	 <p>TE Part # 2141502-4 2POS,1.5MM SFC,REC HSG,ASSY, SEALED,YW</p>
 <p>TE Part # 2141502-5 2POS,1.5MM SFC,REC HSG,ASSY, SEALED,GN</p>	 <p>TE Part # 2141502-2 2POS,1.5MM SFC,REC HSG,ASSY, SEALED,BU</p>	 <p>TE Part # 1-1801155-5 COVER FOR 2W HP CONNECTOR</p>	 <p>TE Part # 1801175-1 2W RECEPTACLE HP CONNECTOR BLACK</p>



TE Part # 1801466-1
COVER, FIXED, 2 WAY HP CONNECTOR



TE Part # 1-1801466-2
COVER, FIXED, 2 WAY HP CONNECTOR



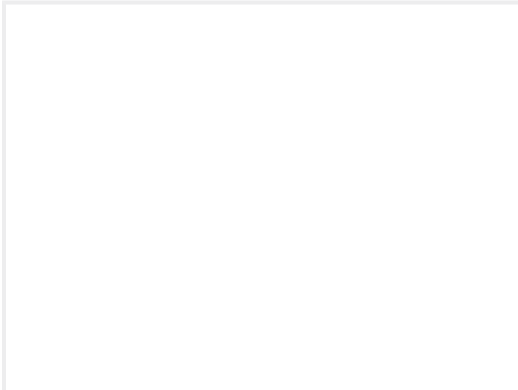
TE Part # 1-1801356-1
ROTATIVE COVER, RIGHT ANGLE, 2W HP CONN



TE Part # 1801356-1
ROTATIVE COVER, RIGHT ANGLE, 2W HP CONN



TE Part # 1801466-2
COVER, FIXED, 2 WAY HP CONNECTOR



TE Part # 1801158-1
RECEPTACLE HSG 2W SPRING LOCK



TE Part # 2141502-8
2POS, 1.5MM SFC, REC HSG, ASSY, SEALED, RD



TE Part # 1801155-5
COVER FOR 2W HP CONNECTOR



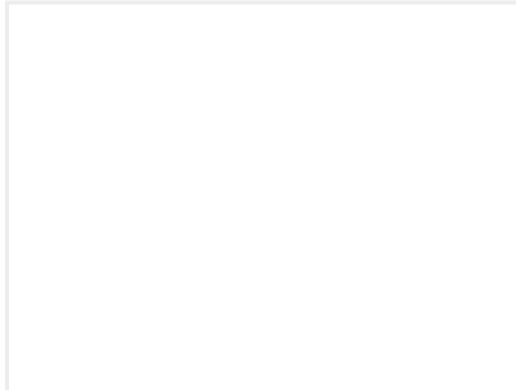
TE Part # CAT-AM706-T273
AMP MCP, SFC, RECEPTACLE



TE Part # 6-1579018-2
EXTRACTION TOOL



TE Part # 1-1823174-5
2POS, 1.5MM SFC, REC HSG ASSY, SLD



TE Part # 1801159-1
SECONDARY LOCK DEVICE FOR 2W TAB HOUSING

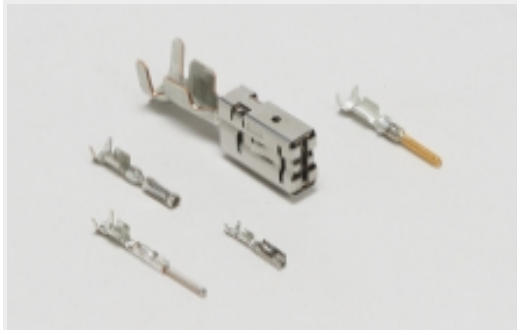
Also in the Series | [Sensor Flat Contact System](#)



[Automotive Connector Caps & Covers \(9\)](#)



[Automotive Housings\(39\)](#)



[Automotive Terminals\(16\)](#)

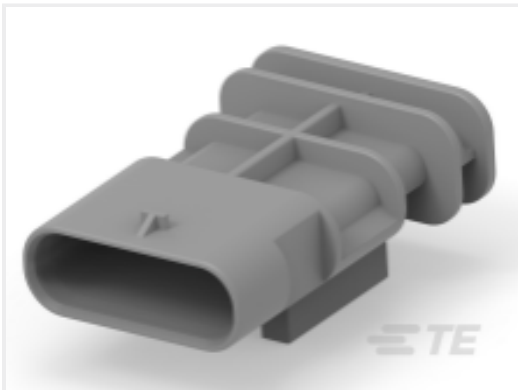


[Insertion & Extraction Tools\(7\)](#)

Customers Also Bought



TE Part #1801174-3
2W TAB HP CONNECTOR GREY



TE Part #2-2141520-2
5POS, MCON 1.2 LL TAB SEALED COD B



TE Part #1801823-1
4POS, MCON 0.5 CB, REC HSG, BLACK, ASSY, SLD



TE Part #1379095-2
COV+LEV MQS 12W 0DEG BLUE





TE Part #2-967644-1
2POS MQS REC SEALED COD B



TE Part #1801600-2
RECEPTACLE HOUSING, MCON, 10 W, SEALED



TE Part #2-2312192-1
1P,MATE-AX,SOC HSG ASSY,SLD, COD A,180



TE Part #1801174-2
2W TAB HP CONNECTOR BLUE



TE Part #1-1437713-1
106099=GROMMET BLACK



TE Part #1-2434680-1
2POS,MQS,TAB HSG,COD A

Documents

Product Drawings

2W TAB HP CONNECTOR BLACK

English

CAD Files

Customer View Model

ENG_CVM_CVM_1801174-1_B.2d_dxf.zip

English

3D PDF

3D

Customer View Model

ENG_CVM_CVM_1801174-1_B.3d_igs.zip

English

Customer View Model

ENG_CVM_CVM_1801174-1_B.3d_stp.zip

English

By downloading the CAD file I accept and agree to the [Terms and Conditions](#) of use.

Product Specifications

Product Specification

English