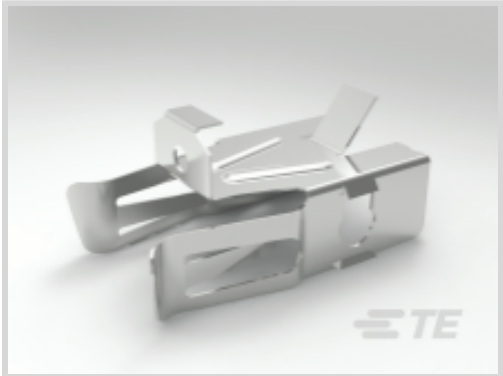




Terminals & Splices > Special Purpose Terminals



Terminal Material Thickness: **.51 mm [.02 in]**
Terminal Plating Material: **Unplated**
Sealable: **No**
Operating Temperature Range: **-40 – 200 °C [-40 – 392 °F]**

Features

Product Type Features

Terminal Features	Heavy Duty
Sealable	No

Contact Features

Terminal Plating Material	Unplated
---------------------------	----------

Dimensions

Terminal Material Thickness	.51 mm[.02 in]
-----------------------------	----------------

Usage Conditions

Insulation Option	Uninsulated
Operating Temperature Range	-40 – 200 °C[-40 – 392 °F]

Product Compliance

[For compliance documentation, visit the product page on TE.com>](#)

EU RoHS Directive 2011/65/EU	Compliant
EU ELV Directive 2000/53/EC	Compliant
China RoHS 2 Directive MIIT Order No 32, 2016	No Restricted Materials Above Threshold
EU REACH Regulation (EC) No. 1907/2006	Current ECHA Candidate List: JAN 2025 (247) Candidate List Declared Against: JAN 2025 (247) Does not contain REACH SVHC



Halogen Content	Low Halogen - Br, Cl, F, I < 900 ppm per homogenous material. Also BFR/CFR/PVC Free
Solder Process Capability	Not reviewed for solder process capability

Product Compliance Disclaimer

This information is provided based on reasonable inquiry of our suppliers and represents our current actual knowledge based on the information they provided. This information is subject to change. The part numbers that TE has identified as EU RoHS compliant have a maximum concentration of 0.1% by weight in homogenous materials for lead, hexavalent chromium, mercury, PBB, PBDE, DBP, BBP, DEHP, DIBP, and 0.01% for cadmium, or qualify for an exemption to these limits as defined in the Annexes of Directive 2011/65/EU (RoHS2). Finished electrical and electronic equipment products will be CE marked as required by Directive 2011/65/EU. Components may not be CE marked. Additionally, the part numbers that TE has identified as EU ELV compliant have a maximum concentration of 0.1% by weight in homogenous materials for lead, hexavalent chromium, and mercury, and 0.01% for cadmium, or qualify for an exemption to these limits as defined in the Annexes of Directive 2000/53/EC (ELV). Regarding the REACH Regulation, the information TE provides on SVHC in articles for this part number is based on the latest European Chemicals Agency (ECHA) 'Guidance on requirements for substances in articles' posted at this URL: <https://echa.europa.eu/guidance-documents/guidance-on-reach>

Compatible Parts




TE Part # 640748-7
HEAVY DUTY BURNER REC 18-14
AWG PHBRZ




TE Part # 1969726-1
2P HEAVY DUTY BURNER HSG

Also in the Series | Appliance Connectors



Crimp Terminal Housings(1)



Special Purpose Terminals(10)

Customers Also Bought



 <p>TE Part #1-1969186-1 312 FASTON HSG.,REC.,BLACK</p>	 <p>TE Part #2-1123722-4 3.96 EP PLUG HSG 4P(YELLOW)</p>	 <p>TE Part #41560 RING .190 (4.82 MM) 18-14 AWG BR</p>	 <p>TE Part #1969725-1 187 FAST&110 PL HSG.,REC.,4 POS, BLACK</p>
 <p>TE Part #2-521498-2 250 FASTON HSG.,REC.,4 POS,RED</p>	 <p>TE Part #521843-1 POWER BLOCK ASSEMBLY 16-12 AWG PTPBR</p>	 <p>TE Part #3-1123722-6 3.96 EP PLUG HSG 6P(BLUE)</p>	 <p>TE Part #521844-1 POWER BLOCK ASSEMBLY 16-12 AWG BR</p>
 <p>TE Part #63959-1 187 FASTON REC 20-16 AWG NPST</p>	 <p>TE Part #1544113-1 CLIP DRAPEAU 6,35</p>		

Documents

Product Drawings
CLIP, HEAVY DUTY BURNER CONNECTOR
English

CAD Files
3D PDF
3D
Customer View Model
ENG_CVM_CVM_1969755-1_A.2d_dxf.zip
English
Customer View Model
ENG_CVM_CVM_1969755-1_A.3d_igs.zip
English
Customer View Model
ENG_CVM_CVM_1969755-1_A.3d_stp.zip
English

By downloading the CAD file I accept and agree to the Terms and Conditions of use.

Product Specifications



Application Specification

English