



Connectors > PCB Connectors > PCB Headers & Receptacles



PCB Connector Type:

PCB Mount Header

PCB Mount Orientation:

Horizontal

Connector System:

Wire-to-Board

Number of Positions:

4

Number of Rows:

2

Features

Product Type Features

PCB Connector Type	PCB Mount Header
Connector System	Wire-to-Board
Header Type	Fully Shrouded
Sealable	No
Connector & Contact Terminates To	Printed Circuit Board
Connector Product Type	Connector Assembly

Configuration Features

PCB Mount Orientation	Horizontal
Number of Positions	4
Number of Rows	2

Body Features

Primary Product Color	Black
-----------------------	-------

Contact Features

Contact Underplating Material	Nickel
Contact Base Material	Copper Alloy
Contact Underplating Material Thickness	1.3 μm[51.18 μin]
Contact Mating Area Plating Material Thickness	2.54 μm[100 μin]
Contact Mating Area Plating Material	Silver (Ag)



Contact Type	Pin
Contact Current Rating (Max)	65 A

Termination Features

Termination Method to PCB	Through Hole - Solder
---------------------------	-----------------------

Mechanical Attachment

Mating Retention	With
PCB Mount Retention Type	Retention Leg
Mating Alignment Type	Keyed
PCB Mount Retention	With
PCB Mount Alignment	Without
Connector Mounting Type	Board Mount
Mating Alignment	With

Housing Features

Housing Material	Polyester GF
Centerline (Pitch)	16 mm [.63 in]

Usage Conditions

Operating Temperature (Max)	105 °C [221 °F]
Operating Temperature Range	-55 – 105 °C [-67 – 221 °F]

Operation/Application

Circuit Application	Power
---------------------	-------

Industry Standards

UL Flammability Rating	UL 94V-0
------------------------	----------

Packaging Features

Packaging Quantity	9
Packaging Method	Box, Tube

Product Compliance

For compliance documentation, visit the product page on TE.com>

EU RoHS Directive 2011/65/EU	Compliant
EU ELV Directive 2000/53/EC	Compliant
China RoHS 2 Directive MIIT Order No 32, 2016	No Restricted Materials Above Threshold
EU REACH Regulation (EC) No. 1907/2006	



Current ECHA Candidate List: JAN 2025  
(247)  
Candidate List Declared Against: JAN 2025  
(247)  
Does not contain REACH SVHC

Halogen Content	Not Low Halogen - contains Br or Cl > 900 ppm.
-----------------	--

Solder Process Capability

Wave solder capable to 265°C

Product Compliance Disclaimer

This information is provided based on reasonable inquiry of our suppliers and represents our current actual knowledge based on the information they provided. This information is subject to change. The part numbers that TE has identified as EU RoHS compliant have a maximum concentration of 0.1% by weight in homogenous materials for lead, hexavalent chromium, mercury, PBB, PBDE, DBP, BBP, DEHP, DIBP, and 0.01% for cadmium, or qualify for an exemption to these limits as defined in the Annexes of Directive 2011/65/EU (RoHS2). Finished electrical and electronic equipment products will be CE marked as required by Directive 2011/65/EU. Components may not be CE marked. Additionally, the part numbers that TE has identified as EU ELV compliant have a maximum concentration of 0.1% by weight in homogenous materials for lead, hexavalent chromium, and mercury, and 0.01% for cadmium, or qualify for an exemption to these limits as defined in the Annexes of Directive 2000/53/EC (ELV). Regarding the REACH Regulation, the information TE provides on SVHC in articles for this part number is based on the latest European Chemicals Agency (ECHA) 'Guidance on requirements for substances in articles' posted at this URL: <https://echa.europa.eu/guidance-documents/guidance-on-reach>

Compatible Parts




TE Part # CAT-D9934-A86  
Contact: Component To Wire; 55-60A, 16-6 Wire Size

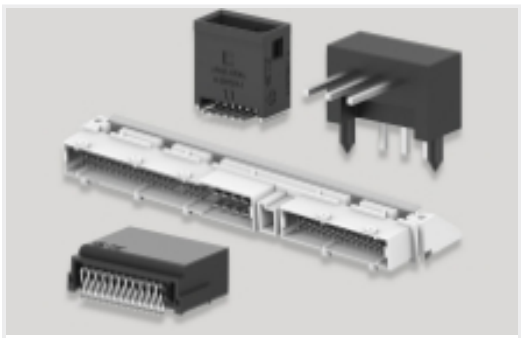


TE Part # 2134055-1  
DYNAMIC D7100 SOCKET HSG ASSY 4P XX


Also in the Series | Dynamic 7000 Series



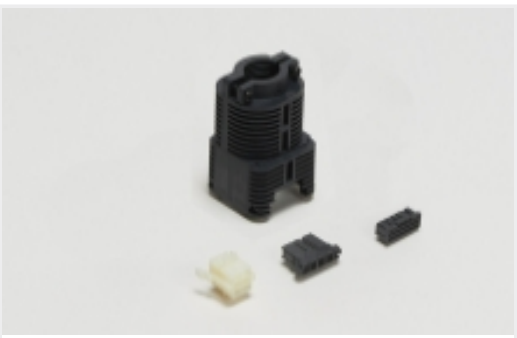
Connector Contacts(10)



PCB Headers & Receptacles(1)



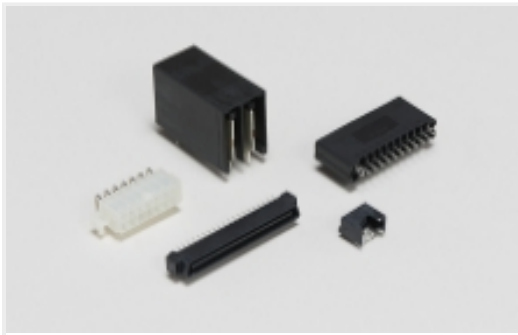
Power Contacts(10)



Rectangular Connector Housings(4)



[Rectangular Power Connectors\(5\)](#)



[Standard Rectangular Connectors\(4\)](#)



[Wire-to-Board Connector Assemblies & Housings\(4\)](#)

Customers Also Bought



TE Part #0460-202-16141  
[PIN, SOLID, SIZE 16, 16-20AWG, NI](#)



TE Part #1871132-3  
[DYNAMIC D7 SOCKET CONT ASSY AG PL #10-12](#)



TE Part #0411-310-1605  
[EXT TOOL, SIZE 16, 16-18 AWG, T, LT BLU](#)



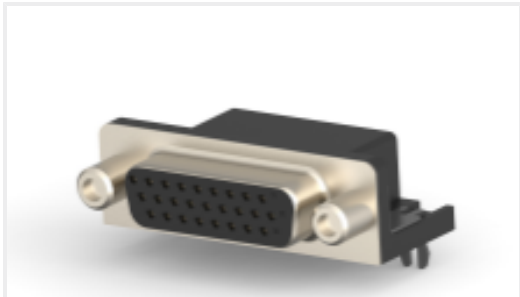
TE Part #HD14-3-96P  
[REC, 3P, GRY, N, THRD, 16 BLU](#)



TE Part #CAT-D9934-A86A  
[Receptacle and Tab Housing: 16 mm Pitch, 630V](#)



TE Part #1-2069313-1  
[D-7 DYNA-CLAMP D-7100 REC 4P KIT M XX](#)



TE Part #2311768-2  
[AMPL REC, HD22, R/A, 26P, S/L](#)



TE Part #1674320-1  
[ENCODER CABLE I/O KIT, MICRO M](#)



TE Part #2-5767004-2  
[MICTOR RECEPT ASSY, 38 POS.](#)

Documents

Product Drawings

[DYNAMIC D7100 HDR ASSY H 4P XX SQ](#)

Japanese

CAD Files

Customer View Model

[ENG\\_CVM\\_CVM\\_1981823-1\\_G.2d\\_dxf.zip](#)

English

[3D PDF](#)



3D

Customer View Model

[ENG\\_CVM\\_CVM\\_1981823-1\\_G.3d\\_igs.zip](#)

English

Customer View Model

[ENG\\_CVM\\_CVM\\_1981823-1\\_G.3d\\_stp.zip](#)

English

By downloading the CAD file I accept and agree to the [Terms and Conditions](#) of use.

Datasheets & Catalog Pages

[1-1773721-5\\_DYNAMIC\\_SERIES\\_QRG](#)

English

Product Specifications

[Product Specification](#)

Japanese

Agency Approvals

[TUV Certificate](#)

English