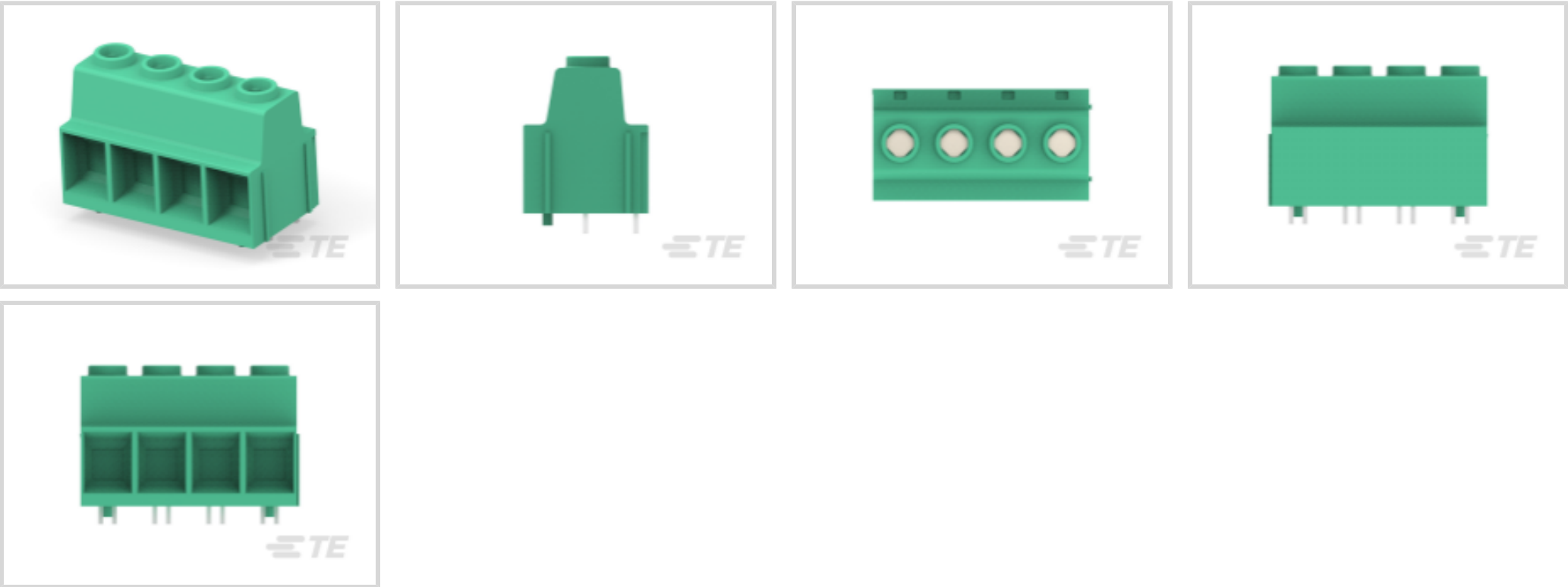


TE Internal #: 1986714-4
4 Position PCB Terminal Block, Header, Wire-to-Board, 15 mm [.591 in] Centerline, 2 Row, 90° Wire Entry Angle, 20 – 1 AWG, .5 – 41 mm² Wire, 600 VAC

[View on TE.com >](#)



Connectors > Terminal Blocks & Strips > PCB Terminal Blocks



Number of Positions: 4
Terminal Block Connector Type: **Header**
Connector System: **Wire-to-Board**
Centerline (Pitch): 15 mm [.591 in]
Number of Rows: 2

Features

Product Type Features

Wire Protection	With
Terminal Block Connector Type	Header
Connector System	Wire-to-Board
Connector & Contact Terminates To	Printed Circuit Board

Configuration Features

Stacking Configuration	Side Stackable
Number of Positions	4
Number of Rows	2
Wire Entry Angle	90°
Wire Entry Location	Side

Electrical Characteristics

Operating Voltage	600 VAC
-------------------	---------

Body Features

Primary Product Color	Green
-----------------------	-------



Product Orientation	Vertical
---------------------	----------

Contact Features

Contact Mating Area Plating Material	Tin (Sn)
Contact Base Material	Copper Alloy
Contact Current Rating (Max)	130 A

Termination Features

Termination Post & Tail Length	5 mm[.197 in]
Termination Method to PCB	Through Hole - Solder

Mechanical Attachment

Screw Plating Material	Nickel
Screw Material	Steel
Thread Size	M5
PCB Mount Alignment Type	Locating Posts
Connector Mounting Type	Board Mount

Housing Features

Housing Material	PA 66
Centerline (Pitch)	15 mm[.591 in]

Dimensions

Wire Size	20 – 1 AWG
-----------	------------

Usage Conditions

Operating Temperature Range	-40 – 110 °C[-40 – 230 °F]
-----------------------------	----------------------------

Operation/Application

Circuit Application	Power & Signal
---------------------	----------------

Product Compliance

For compliance documentation, visit the product page on TE.com>

EU RoHS Directive 2011/65/EU	Compliant
EU ELV Directive 2000/53/EC	Compliant
China RoHS 2 Directive MIIT Order No 32, 2016	No Restricted Materials Above Threshold
EU REACH Regulation (EC) No. 1907/2006	Current ECHA Candidate List: JAN 2025 (247) Candidate List Declared Against: JAN 2025 (247)



Does not contain REACH SVHC


Halogen Content	Low Halogen - Br, Cl, F, I < 900 ppm per homogenous material. Also BFR/CFR/PVC Free
-----------------	---

Solder Process Capability	Wave solder capable to 265°C
---------------------------	------------------------------

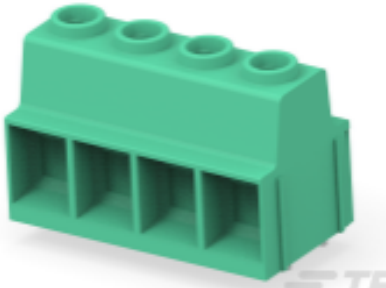
Product Compliance Disclaimer

This information is provided based on reasonable inquiry of our suppliers and represents our current actual knowledge based on the information they provided. This information is subject to change. The part numbers that TE has identified as EU RoHS compliant have a maximum concentration of 0.1% by weight in homogenous materials for lead, hexavalent chromium, mercury, PBB, PBDE, DBP, BBP, DEHP, DIBP, and 0.01% for cadmium, or qualify for an exemption to these limits as defined in the Annexes of Directive 2011/65/EU (RoHS2). Finished electrical and electronic equipment products will be CE marked as required by Directive 2011/65/EU. Components may not be CE marked. Additionally, the part numbers that TE has identified as EU ELV compliant have a maximum concentration of 0.1% by weight in homogenous materials for lead, hexavalent chromium, and mercury, and 0.01% for cadmium, or qualify for an exemption to these limits as defined in the Annexes of Directive 2000/53/EC (ELV). Regarding the REACH Regulation, the information TE provides on SVHC in articles for this part number is based on the latest European Chemicals Agency (ECHA) ‘Guidance on requirements for substances in articles’ posted at this URL: <https://echa.europa.eu/guidance-documents/guidance-on-reach>

Compatible Parts



TE Part # 1986715-4
PWR TB 2PIN 4P,15.00 PCB-FLANGE



TE Part # 1986713-4
PWR TB DBL PIN 4P, 15.00 PCB

Customers Also Bought



TE Part #CAT-C339-H85913
Power Resistors: Aluminum Housed, HSA



TE Part #ANT-433-WRT-RPS
Antenna Dome 433MHz RG174 216 RPS



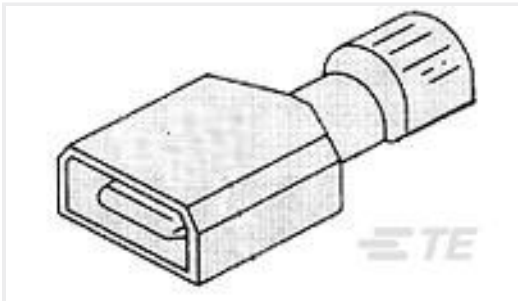
TE Part #6-2176326-1
CRGP 0603 1M0 1%



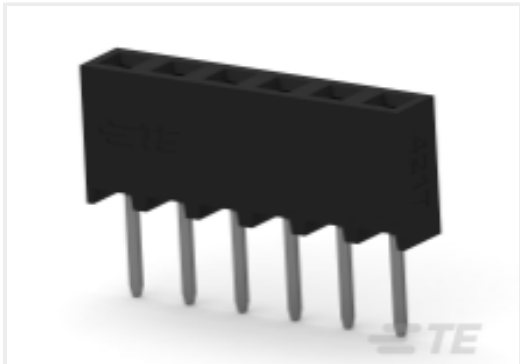
TE Part #1-1625999-4
HSC100 1R0 5%



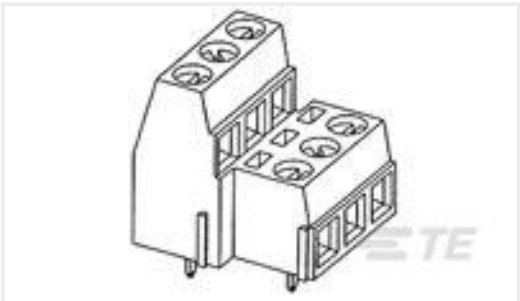
TE Part #1986714-2
PWR TB 2PIN 2P,15.00 PCB W/PEG



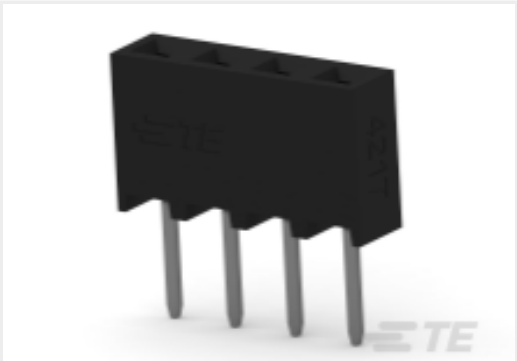
TE Part #2-521103-2
ULTRA-FAST 187 ASY REC 22-18 TPBR



TE Part #2314868-6
6P,2MM,BB,REC,SRVT,2,0,0.1AU,TB,W /CP



TE Part #282868-2
TERMI-BLOK PCB MOUNT 1&2 2P. 5



TE Part #2314868-4
4P,2MM,BB,REC,SRVT,2,0,0.1AU,TB,W /CP

Documents

Product Drawings

PWR TB 2PIN 4P,15.00 PCB W/PEG

English

CAD Files

3D PDF

3D

Customer View Model

ENG_CVM_CVM_1986714-4_B.2d_dxf.zip

English

Customer View Model

ENG_CVM_CVM_1986714-4_B.3d_igs.zip

English

Customer View Model

ENG_CVM_CVM_1986714-4_B.3d_stp.zip

English

By downloading the CAD file I accept and agree to the [Terms and Conditions](#) of use.

Datasheets & Catalog Pages

BUCHANAN TERMINAL BLOCKS CATALOG - EUROSTYLE TERMINAL BLOCKS

English

Agency Approvals

UL

English