



Connectors > Terminal Blocks & Strips > Terminal Block & Strip Accessories > Terminal Block & Strip Marking Accessories



Marking Product Type: **Marker Card**

Pre-Printed Mark Details: **11 -> 20 (x10)**

Primary Product Color: **White**

Product Orientation: **Vertical**

Operating Temperature Range: **-55 – 110 °C [-67 – 230 °F]**

Features

Product Type Features

Marking Product Type	Marker Card
----------------------	-------------

Configuration Features

Number of Digits per Marker - Vertical	8
Number of Digits per Marker - Horizontal	3
Number of Cards per Package	1
Pre-Printed Mark Details	11 -> 20 (x10)

Body Features

Product Weight	10 g[.353 oz]
Primary Product Material	Polyamide
Primary Product Color	White
Product Orientation	Vertical

Dimensions

Product Width	5.2 mm[.205 in]
Product Depth	4.8 mm
Product Length	5 mm[.197 in]
Product Height	12 mm[.472 in]

Usage Conditions



Operating Temperature Range	-55 – 110 °C[-67 – 230 °F]
-----------------------------	----------------------------

Industry Standards

UL Flammability Rating	UL 94V-2
------------------------	----------

Product Compliance

For compliance documentation, visit the product page on TE.com>

EU RoHS Directive 2011/65/EU	Compliant
EU ELV Directive 2000/53/EC	Compliant
China RoHS 2 Directive MIIT Order No 32, 2016	No Restricted Materials Above Threshold
EU REACH Regulation (EC) No. 1907/2006	Current ECHA Candidate List: JAN 2025 (247) Candidate List Declared Against: JAN 2025 (247) Does not contain REACH SVHC
Halogen Content	Low Halogen - Br, Cl, F, I < 900 ppm per homogenous material. Also BFR/CFR/PVC Free
Solder Process Capability	Not reviewed for solder process capability

Product Compliance Disclaimer

This information is provided based on reasonable inquiry of our suppliers and represents our current actual knowledge based on the information they provided. This information is subject to change. The part numbers that TE has identified as EU RoHS compliant have a maximum concentration of 0.1% by weight in homogenous materials for lead, hexavalent chromium, mercury, PBB, PBDE, DBP, BBP, DEHP, DIBP, and 0.01% for cadmium, or qualify for an exemption to these limits as defined in the Annexes of Directive 2011/65/EU (RoHS2). Finished electrical and electronic equipment products will be CE marked as required by Directive 2011/65/EU. Components may not be CE marked. Additionally, the part numbers that TE has identified as EU ELV compliant have a maximum concentration of 0.1% by weight in homogenous materials for lead, hexavalent chromium, and mercury, and 0.01% for cadmium, or qualify for an exemption to these limits as defined in the Annexes of Directive 2000/53/EC (ELV). Regarding the REACH Regulation, the information TE provides on SVHC in articles for this part number is based on the latest European Chemicals Agency (ECHA) 'Guidance on requirements for substances in articles' posted at this URL: <https://echa.europa.eu/guidance-documents/guidance-on-reach>

Compatible Parts



Customers Also Bought



TE Part #1SNK140042R0000
MC512PA 31->40 (x10) Vertical



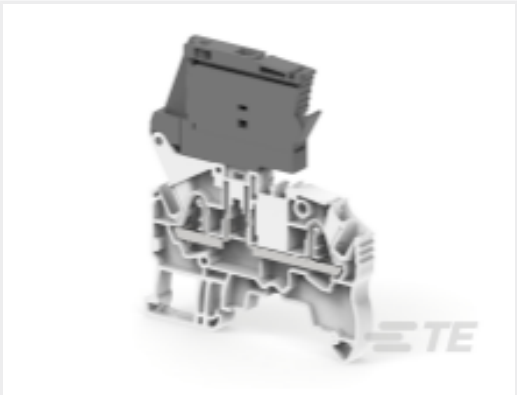
TE Part #1SNK900102R0000
BAZH1



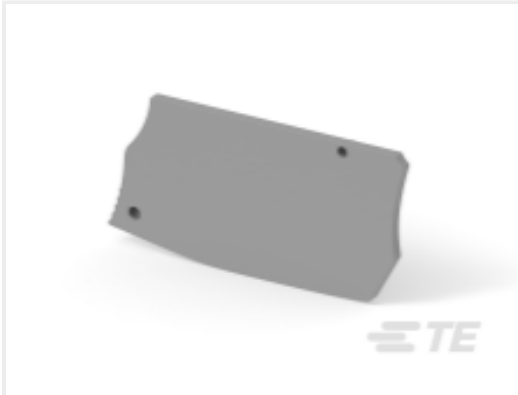
TE Part #1SNK505062R0000
ZS4-RD



TE Part #1SNK706411R0000
ZK2.5-SF-R1



TE Part #1SNK706410R0000
ZK2.5-SF



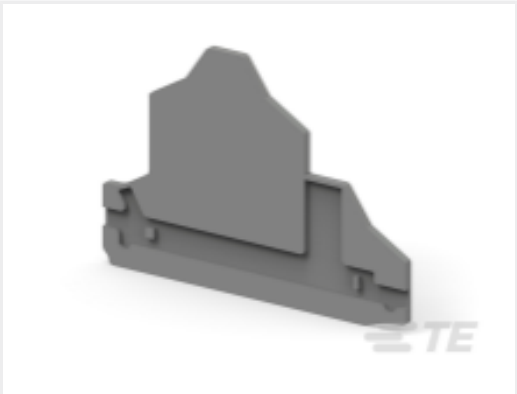
TE Part #1SNK505910R0000
ES4



TE Part #1SNK505960R0000
ES4-D2



TE Part #1SNK705072R0000
ZK2.5-3P-WH



TE Part #1SNK705960R0000
EK2.5-D2



TE Part #1SNK140012R0000
MC512PA 1->10 (x10) Vertical

Documents

CAD Files

3D PDF

3D

Customer View Model

ENG_CVM_CVM_1SNK140022R0000_A.2d_dxf.zip

English

Customer View Model

ENG_CVM_CVM_1SNK140022R0000_A.3d_igs.zip

English

Customer View Model

ENG_CVM_CVM_1SNK140022R0000_A.3d_stp.zip

English

By downloading the CAD file I accept and agree to the [Terms and Conditions](#) of use.

Datasheets & Catalog Pages

MC512PA 11->20 (x10) Vertical

English

ENTRELEC Terminal Block - Master Catalog

1SNK140022R0000

Marker Card, 11 -> 20 (x10) Mark Details, White, Vertical, -55 – 110 °C [-67 – 230 °F],
UL 94V-2, Terminal Block & Strip Marking Accessories



[ENTRELEC Terminal Block - Master Catalog](#)

English

[SNK SERIES TERMINAL BLOCKS](#)

English

[ENTRELEC Terminal Blocks Catalogue \(RUS\)](#)