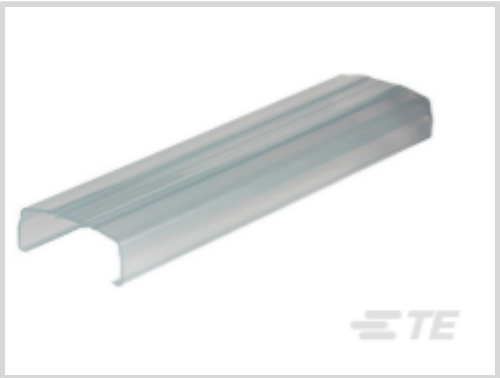




Connectors > Terminal Blocks & Strips > Terminal Block & Strip Accessories > Terminal Block & Strip Insulating Accessories



Insulating Accessory Type: **Safety Cover**  
Compatible With Block or Strip Type: **Screw Clamp Terminal Blocks**  
Operating Temperature Range: **-55 – 80 °C [ -67 – 176 °F ]**

Features

Product Type Features

Insulating Accessory Type	Safety Cover
---------------------------	--------------

Body Features

Primary Product Color	Clear
Product Weight	300 g[10.58 oz]
Primary Product Material	PVC

Dimensions

Product Depth	30.2 mm[1.189 in]
Product Height	77 mm[3.031 in]

Usage Conditions

Installation Temperature Range	-5 – 40 °C[23 – 104 °F]
Operating Temperature Range	-55 – 80 °C[-67 – 176 °F]

Operation/Application

Compatible With Block or Strip Type	Screw Clamp Terminal Blocks
-------------------------------------	-----------------------------

Industry Standards

IP Rating	IP20
UL Flammability Rating	UL 94V-2

Product Compliance

[For compliance documentation, visit the product page on TE.com>](#)

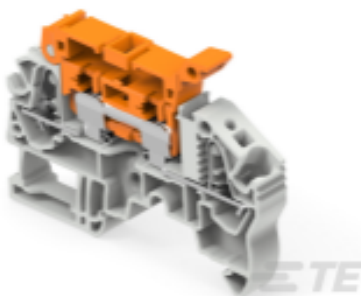


EU RoHS Directive 2011/65/EU	Compliant
EU ELV Directive 2000/53/EC	Compliant
China RoHS 2 Directive MIIT Order No 32, 2016	No Restricted Materials Above Threshold
EU REACH Regulation (EC) No. 1907/2006	Current ECHA Candidate List: JAN 2025 (247) Candidate List Declared Against: JUNE 2023 (235) Does not contain REACH SVHC
Halogen Content	BFR/CFR/PVC Free, but Br/Cl >900 ppm in other sources.
Solder Process Capability	Not reviewed for solder process capability

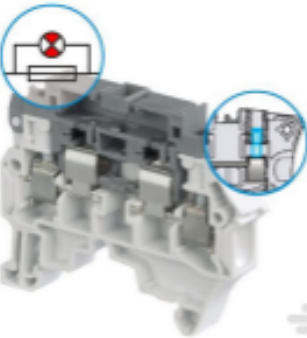
Product Compliance Disclaimer

This information is provided based on reasonable inquiry of our suppliers and represents our current actual knowledge based on the information they provided. This information is subject to change. The part numbers that TE has identified as EU RoHS compliant have a maximum concentration of 0.1% by weight in homogenous materials for lead, hexavalent chromium, mercury, PBB, PBDE, DBP, BBP, DEHP, DIBP, and 0.01% for cadmium, or qualify for an exemption to these limits as defined in the Annexes of Directive 2011/65/EU (RoHS2). Finished electrical and electronic equipment products will be CE marked as required by Directive 2011/65/EU. Components may not be CE marked. Additionally, the part numbers that TE has identified as EU ELV compliant have a maximum concentration of 0.1% by weight in homogenous materials for lead, hexavalent chromium, and mercury, and 0.01% for cadmium, or qualify for an exemption to these limits as defined in the Annexes of Directive 2000/53/EC (ELV). Regarding the REACH Regulation, the information TE provides on SVHC in articles for this part number is based on the latest European Chemicals Agency (ECHA) ‘Guidance on requirements for substances in articles’ posted at this URL: <https://echa.europa.eu/guidance-documents/guidance-on-reach>

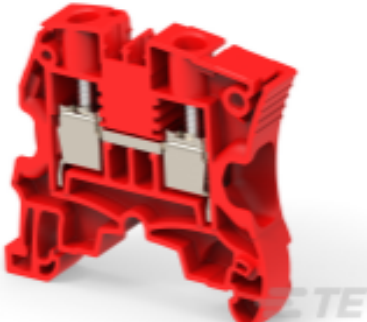
Compatible Parts




TE Part # 1SNK708414R0000  
ZK4-S-R3




TE Part # 1SNK508415R0000  
ZS4-SF1-R4




TE Part # 1SNK508062R0000  
ZS10-RD



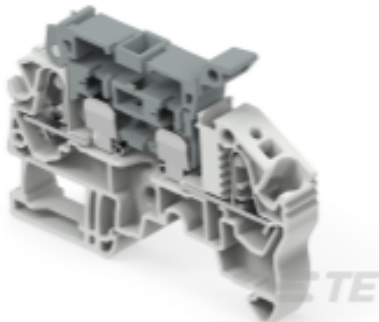
TE Part # 1SNK508315R0000  
ZS10-S




TE Part # 1SNK508414R0000  
ZS4-SF1-R3



TE Part # 1SNK512010R0000  
ZS25



TE Part # 1SNK708410R0000  
ZK4-SF1



TE Part # 1SNK508410R0000  
ZS4-SF1



TE Part # 1SNK510150R0000  
ZS16-PE



TE Part # 1SNK512020R0000  
ZS25-BL



TE Part # 1SNK508020R0000  
ZS10-BL



TE Part # 1SNK506065R0000  
ZS6-WH



TE Part # 1SNK508060R0000  
ZS10-YL



TE Part # 1SNK505030R0000  
ZS4-OR



TE Part # 1SNK505310R0000  
ZS4-S



TE Part # 1SNK510030R0000  
ZS16-OR



TE Part # 1SNK508412R0000  
ZS4-SF1-R1



TE Part # 1SNK508063R0000  
ZS10-PR



TE Part # 1SNK508413R0000  
ZS4-SF1-R2



TE Part # 1SNK505311R0000  
ZS4-S-T2

Also in the Series | ENTRELEC SNK



Modular Terminal Blocks(319)



Terminal Block & Strip Conducting  
Accessories(67)



Terminal Block & Strip Insulating  
Accessories(31)

Customers Also Bought



TE Part #1676461-1  
RN 0805 90K9 0.1% 10PPM CUT  
LENGTH



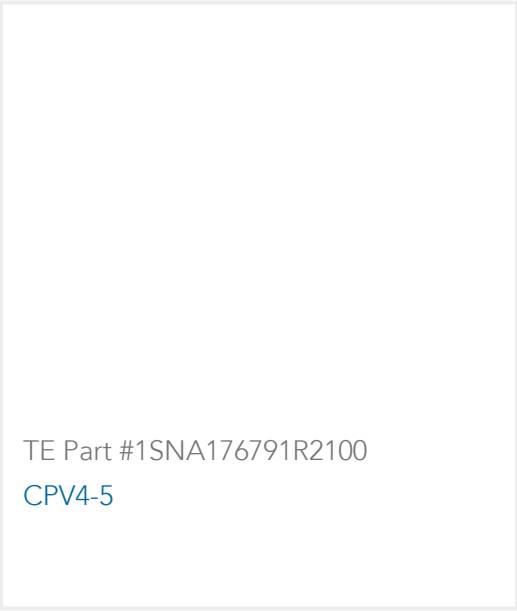
TE Part #ZPF00000000018713  
FDBA 50H 10-6 PW-K-A276A



TE Part #1SNK505010R0000  
ZS4



TE Part #1SNK508010R0000  
ZS10



Documents

CAD Files

3D PDF

3D

Customer View Model

ENG\_CVM\_CVM\_1SNK900604R0000\_A.2d\_dxf.zip

English

Customer View Model

ENG\_CVM\_CVM\_1SNK900604R0000\_A.3d\_igs.zip

English

Customer View Model

ENG\_CVM\_CVM\_1SNK900604R0000\_A.3d\_stp.zip

English

By downloading the CAD file I accept and agree to the [Terms and Conditions](#) of use.

Datasheets & Catalog Pages

CO

English

ENTRELEC Terminal Block - Master Catalog

ENTRELEC Terminal Block - Master Catalog

English

SNK SERIES TERMINAL BLOCKS

English

ENTRELEC Terminal Blocks Catalogue (RUS)